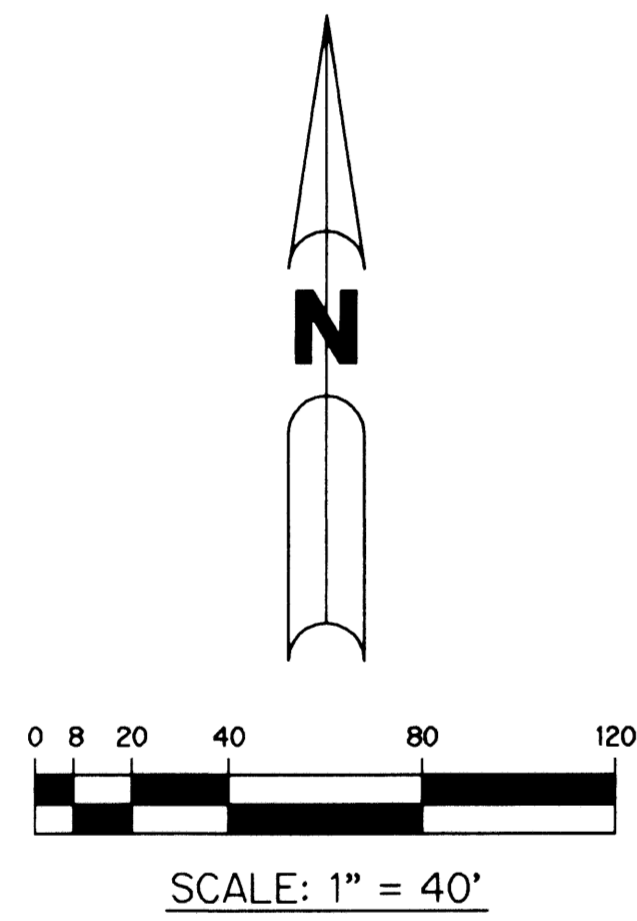


VALENCIA SHORES - PLAT FOUR

BEING ALL OF TRACTS 90 THROUGH 97, AND 104 THROUGH 113, AND A PORTION OF TRACTS 89, 98, 100, 103 AND 114, AND A PORTION OF THE SOUTH 15 FEET OF A ROAD, DYKE AND DITCH RESERVATION, 30 FEET IN WIDTH, LYING NORTH OF AND PARALLEL TO SAID TRACTS 89 THROUGH 100, BLOCK 43, ACCORDING TO THE PLAT OF PALM BEACH FARMS COMPANY PLAT NO. 3, AS RECORDED IN PLAT BOOK 2, PAGES 45 THROUGH 54, PUBLIC RECORDS OF PALM BEACH COUNTY, FLORIDA, LYING IN SECTIONS 7 AND 8, TOWNSHIP 45 SOUTH, RANGE 42 EAST, PALM BEACH COUNTY, FLORIDA

SHEET 10 OF 14 APRIL, 2003

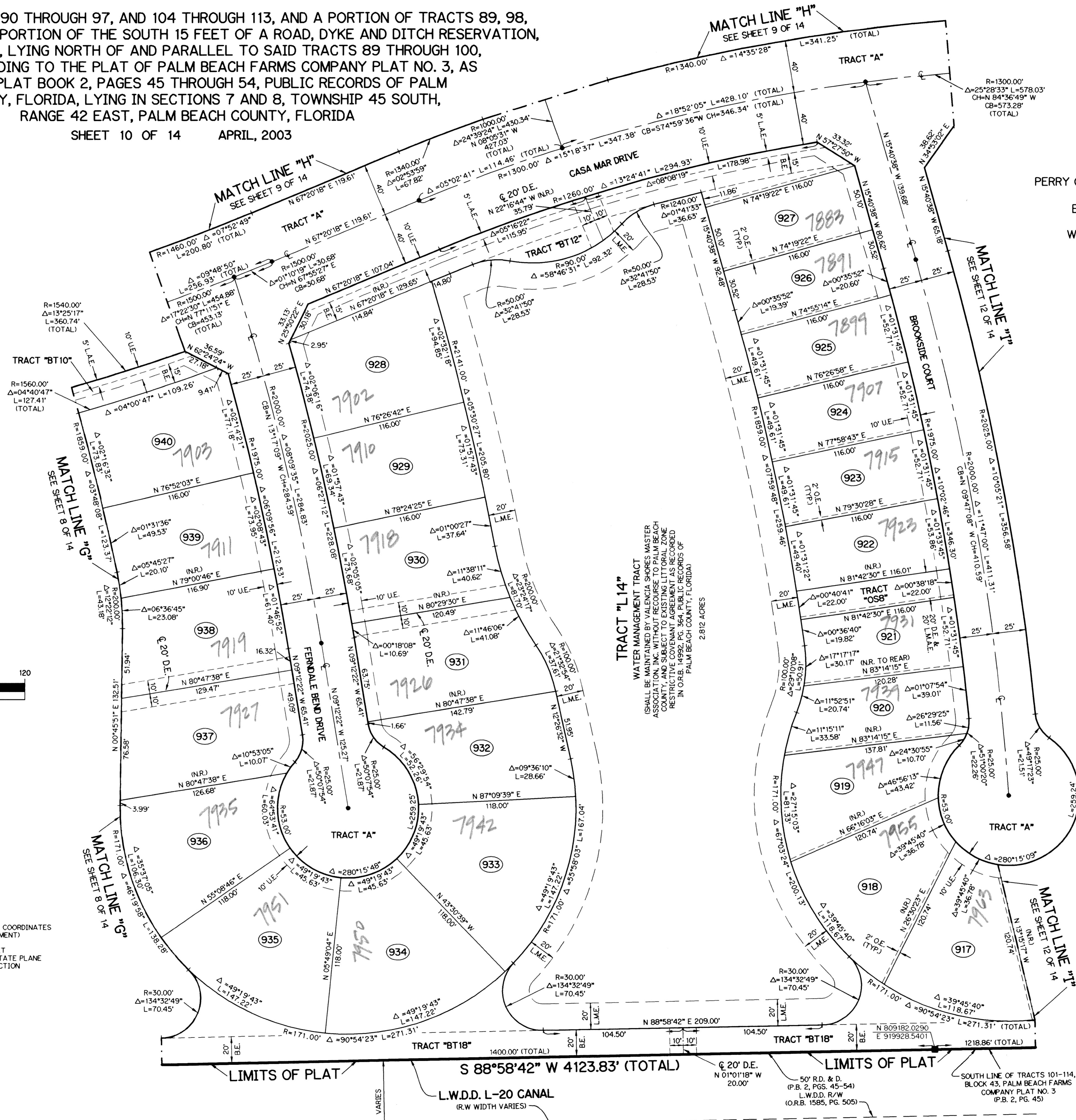
THIS INSTRUMENT PREPARED BY
 PERRY C. WHITE, P.S.M. 4213, STATE OF FLORIDA
 LAWSON, NOBLE AND WEBB, INC.
 ENGINEERS PLANNERS SURVEYORS
 420 COLUMBIA DRIVE
 WEST PALM BEACH, FLORIDA 33409
 LB-6674



NOTE:

COORDINATES SHOWN ARE GRID COORDINATES
 DATUM = NAD 83 (1990 ADJUSTMENT)
 ZONE = FLORIDA EAST ZONE
 LINEAR UNIT = U.S. SURVEY FEET
 COORDINATE SYSTEM = 1983 STATE PLANE
 TRANSVERSE MERCATOR PROJECTION
 ALL DISTANCES ARE GROUND
 SCALE FACTOR = 1.0000217
 PLAT BEARING = GRID BEARING
 NO ROTATION

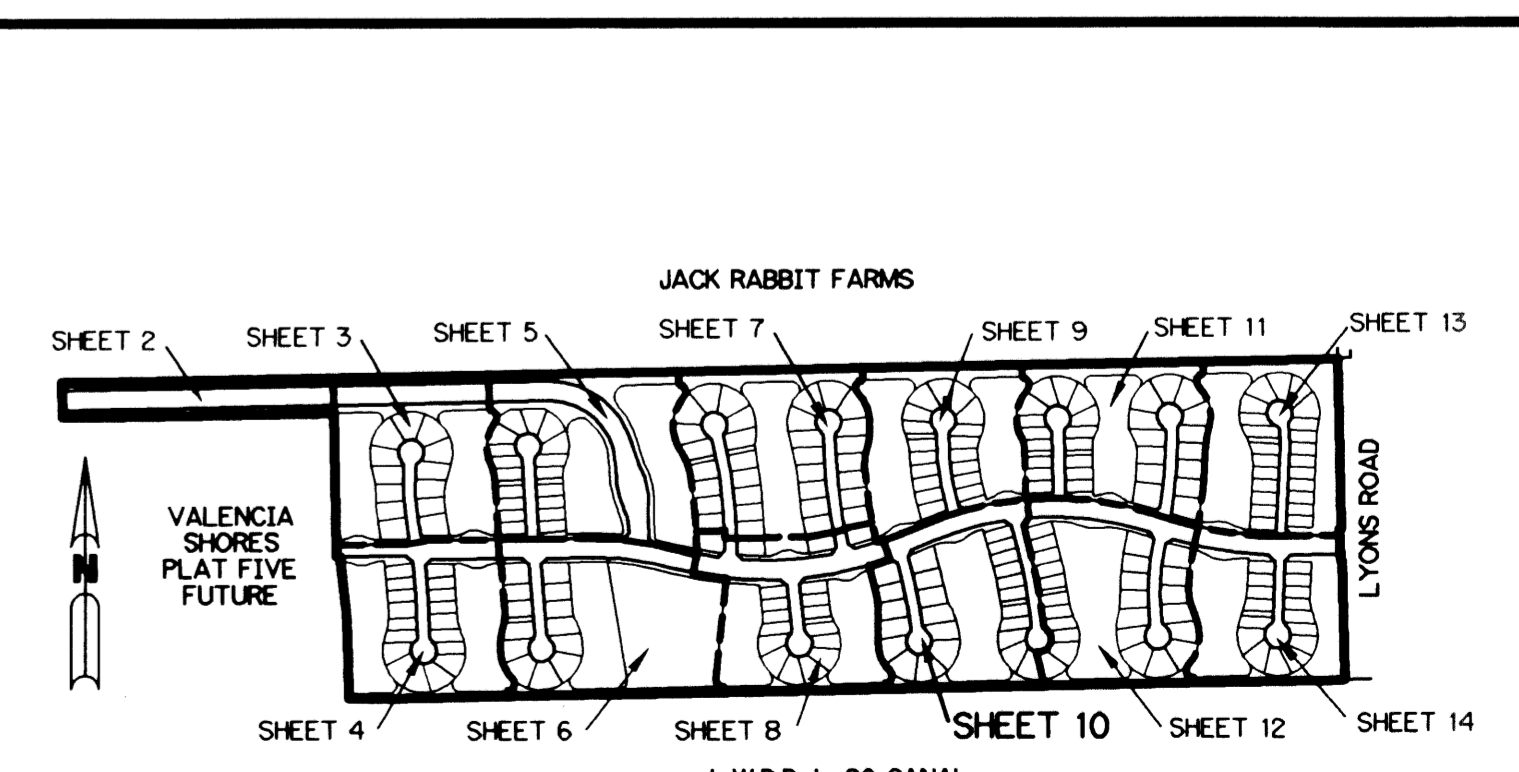
SUBDIVISION: Valencia Shores, Pl. 4
 BOOK: 49
 FLOOD ZONE: F
 QUAD: 44
 SE
 TAZ: 742
 PUD NAME: VALENCIA SHORES



TRACT "L14"
 WATER MANAGEMENT TRACT
 SHALL BE MAINTAINED BY VALENCIA SHORES MASTER ASSOCIATION, INC. WITHOUT RECOURSE TO PALM BEACH COUNTY, AND SUBJECT TO EXISTING LITTORAL ZONE RESTRICTIVE GOVERNMENT AGREEMENT AS RECORDED IN PUBLIC RECORDS OF PALM BEACH COUNTY, FLORIDA.
 2.812 ACRES

LEGEND:

- - SET PERMANENT REFERENCE MONUMENT, L.B. #6674
- - FOUND PERMANENT REFERENCE MONUMENT, L.B. #6674
- - SET PERMANENT CONTROL POINT, L.B. #6674
- - FOUND PERMANENT CONTROL POINT, L.B. #6674
- Δ - DELTA ANGLE
- B.E. - BUFFER EASEMENT
- CB - CHORD BEARING
- CH - CHORD DISTANCE
- C.L. - CENTERLINE
- D.B. - DEED BOOK
- D.E. - DRAINAGE EASEMENT
- GND. - GROUND
- L - ARC LENGTH
- L.A.E. - LIMITED ACCESS EASEMENT
- L.M.A.E. - LAKE MAINTENANCE ACCESS EASEMENT
- L.M.E. - LAKE MAINTENANCE EASEMENT
- L.W.D.D. - LAKE WORTH DRAINAGE DISTRICT
- NR. - NOT RADIAL
- N.T.S. - NOT TO SCALE
- O.E. - OVERHANG EASEMENT
- O.R.B. - OFFICIAL RECORD BOOK
- P.B. - PLAT BOOK
- P.B.C.U.E. - PALM BEACH COUNTY UTILITY EASEMENT
- P.C. - POINT OF CURVATURE
- P.C.P. - PERMANENT CONTROL POINT
- P.G.S. - PAGES
- P.O.B. - POINT OF BEGINNING
- P.O.C. - POINT OF COMMENCEMENT
- P.S.M. - PROFESSIONAL SURVEYOR AND MAPPER
- P.T. - POINT OF TANGENCY
- R - RADIUS
- RAD. - RADIAL
- R.D. & D. - ROAD, DITCH & DYKE RESERVATION PER P.B. 2, PG. 45 - 54
- R/W - RIGHT-OF-WAY
- TYP. - TYPICAL
- U.E. - UTILITY EASEMENT
- N 737648.0171
E 905258.2326 - DENOTES STATE PLANE COORDINATES



KEY MAP
N.T.S.