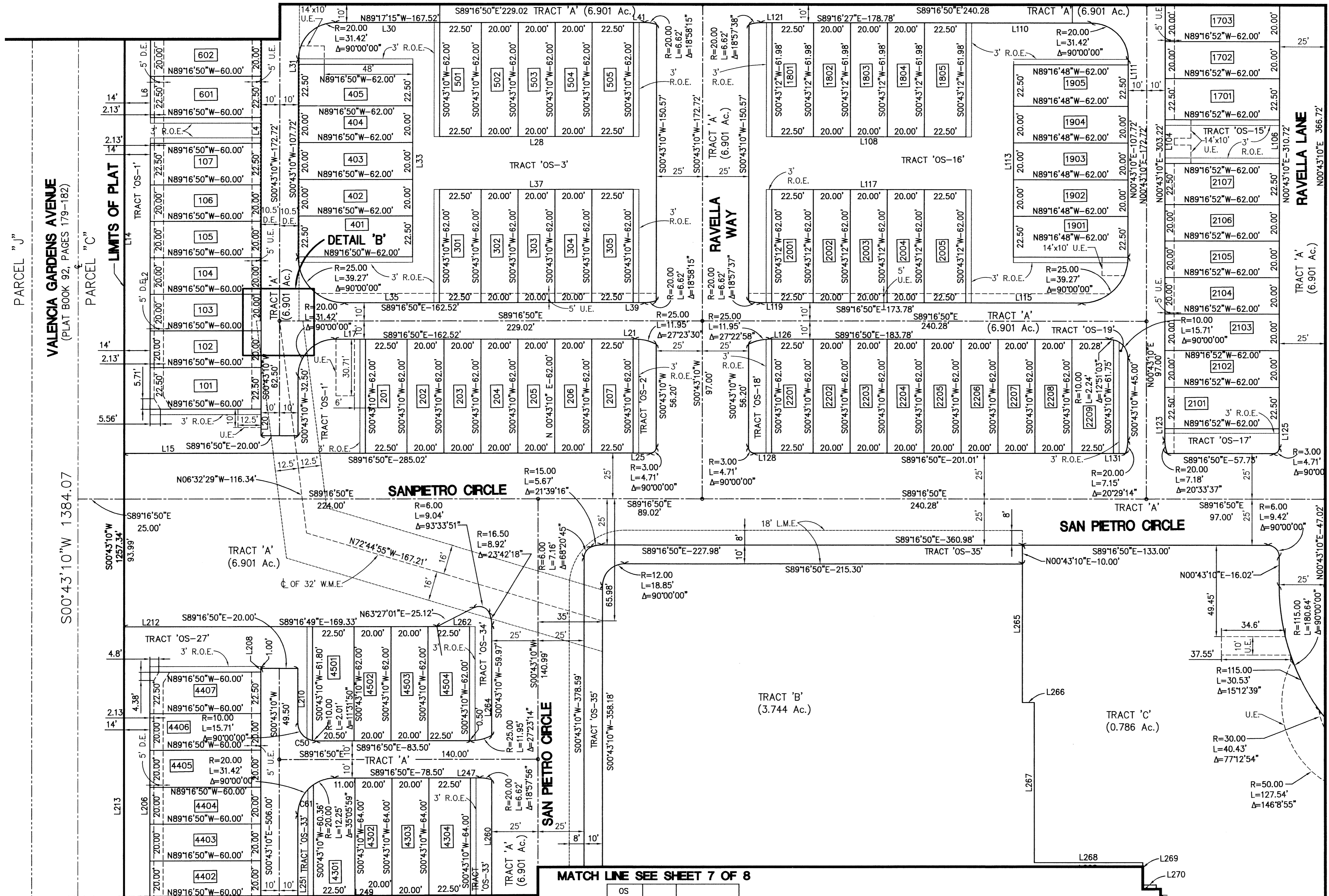


HARBOUR OAKS

A PARCEL OF LAND LYING AND BEING WITHIN A PORTION OF SECTION 5, TOWNSHIP 42 SOUTH, RANGE 43 EAST, ALSO BEING A REPLAT OF A PORTION OF THE GRANDE AT PALM BEACH GARDENS, PLAT BOOK 92, PAGES 179-182 CITY OF PALM BEACH GARDENS, PALM BEACH COUNTY, FLORIDA

THIS INSTRUMENT WAS PREPARED BY:
THOMAS C. SHAHAN, P.S.M. #4387 OF
GRAVEN THOMPSON & ASSOCIATES, INC.
ENGINEERS PLANNERS SURVEYORS
5114 GREENHURST BOULEVARD, SUITE 112, WEST PALM BEACH, FLORIDA 33417
TEL: (561) 888-5000 FAX: (561) 888-1037
3583 N.W. 53RD STREET, FORT LAUDERDALE, FLORIDA 33309
TEL: (954) 738-8400 FAX: (954) 738-6400
FLORIDA LICENSED ENGINEERING, SURVEYING & MAPPING BUSINESS NO. 271
FLORIDA LICENSED LANDSCAPE ARCHITECTURE BUSINESS NO. 020014
JANUARY 2003 02-0070

MATCH LINE SEE SHEET 3 OF 8

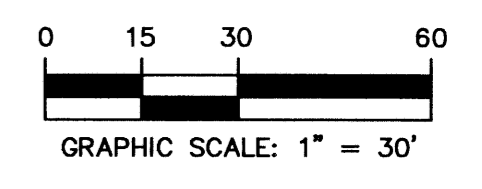


LINE TABLE

LINE	LENGTH	BEARING
L2	145.00	N00°43'10"E
L4	14.00	N00°43'10"E
L6	145.00	N00°43'10"E
L14	496.58	S00°43'10"W
L15	130.52	S89°16'50"E
L17	16.52	N89°16'50"W
L20	14.58	N00°43'10"E
L21	1.00	N89°16'50"W
L25	9.50	S89°16'50"E
L28	105.00	N89°16'50"W
L30	56.52	N89°16'50"W
L31	2.72	S00°43'10"W
L33	105.00	S00°43'10"W
L35	51.52	S89°16'50"E
L37	105.00	S89°16'50"E
L39	6.00	S89°16'50"E
L41	6.00	N89°16'50"W
L104	23.72	S00°43'10"W
L106	23.72	N00°43'10"E
L108	105.00	S89°16'50"E
L110	67.78	S89°16'50"E
L111	2.72	S00°43'10"W
L113	105.00	S00°43'10"W
L115	62.78	N89°16'50"W
L117	105.00	N89°16'50"W
L119	6.00	N89°16'50"W
L121	6.00	S89°16'50"E
L123	6.50	S00°43'10"W
L125	10.50	N00°43'10"E
L126	1.00	N89°16'50"W
L128	9.50	S89°16'50"E
L131	6.51	S89°16'50"E
L206	145.00	N00°43'10"E
L208	2.00	N00°43'10"E
L210	29.50	S00°43'10"W
L212	102.00	N89°16'50"W
L213	554.77	S00°43'10"W
L247	5.00	N89°16'50"W
L251	62.75	S00°43'10"W
L260	248.33	N00°43'10"E
L262	17.67	S89°16'50"E
L264	59.70	N00°43'10"E
L265	75.07	S00°43'10"W
L266	6.38	S89°16'50"E
L267	89.65	S00°43'10"W
L268	58.66	S89°16'50"E
L269	12.14	S00°43'10"W
L270	7.92	S89°16'50"E
L271	16.83	S00°43'10"W
L272	121.63	S89°16'50"E

STATE OF FLORIDA
COUNTY OF PALM BEACH
THIS PLAT WAS FILED FOR RECORD AT _____
THIS _____ DAY OF _____ 2003
AND DULY RECORDED IN PLAT BOOK NO. _____
ON PAGE _____
DOROTHY H. MILKEN,
CLERK OF THE CIRCUIT COURT
BY _____ DEPUTY CLERK

SHEET 5 OF 8



MATCH LINE SEE SHEET 6 OF 8

MATCH LINE SEE SHEET 7 OF 8

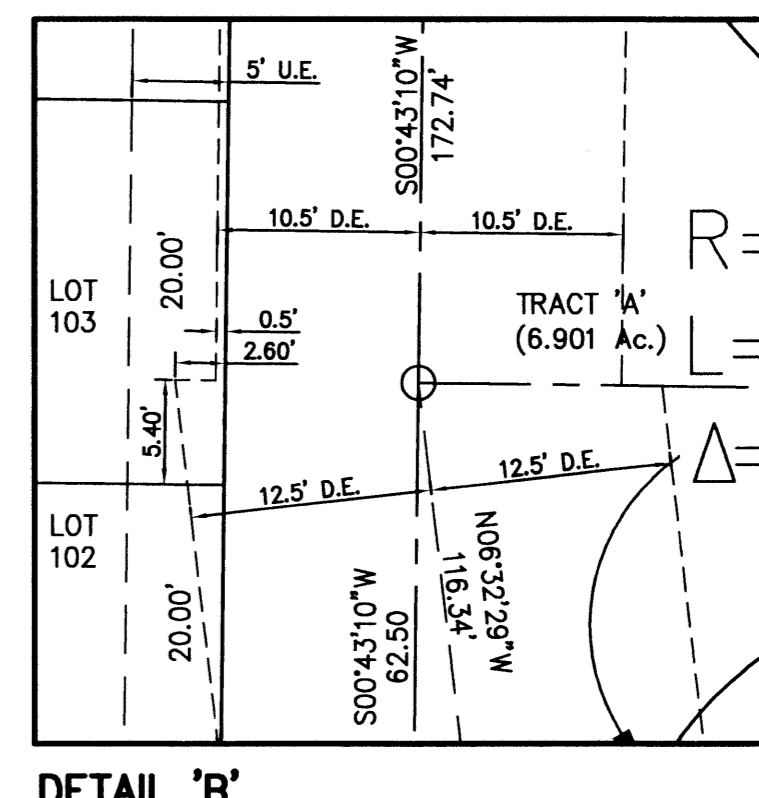
UNIT NUMBER	SQUARE FOOTAGE	UNIT NUMBER	SQUARE FOOTAGE	UNIT NUMBER	SQUARE FOOTAGE	UNIT NUMBER	SQUARE FOOTAGE	UNIT NUMBER	SQUARE FOOTAGE	UNIT NUMBER	SQUARE FOOTAGE
101	1350	301	1395	505	1395	1904	1240	2201	1395	4403	1200
102	1200	302	1240	601	1350	1905	1395	2202	1240	4404	1200
103	1200	303	1240	602	1200	2001	1395	2203	1240	4405	1200
104	1200	304	1240	1701	1395	2002	1240	2204	1240	4406	1200
105	1200	305	1395	1702	1240	2003	1240	2205	1240	4407	1350
106	1200	401	1395	1703	1240	2004	1240	2206	1240	4501	1395
107	1350	402	1801	1801	1395	2005	1395	2207	1240	4502	1240
201	1395	403	1240	1802	1240	2101	1395	2208	1240	4503	1240
202	1240	404	1240	1803	1240	2102	1240	2209	1394.81	4504	1395
203	1240	405	1395	1804	1240	2103	1240	4301	1426.61		
204	1240	501	1395	1805	1395	2104	1240	4302	1280		
205	1240	502	1240	1901	1395	2105	1240	4303	1280		
206	1240	503	1240	1902	1240	2106	1240	4304	1440		
207	1395	504	1240	1903	1240	2107	1395	4402	1200		

CURVE TABLE

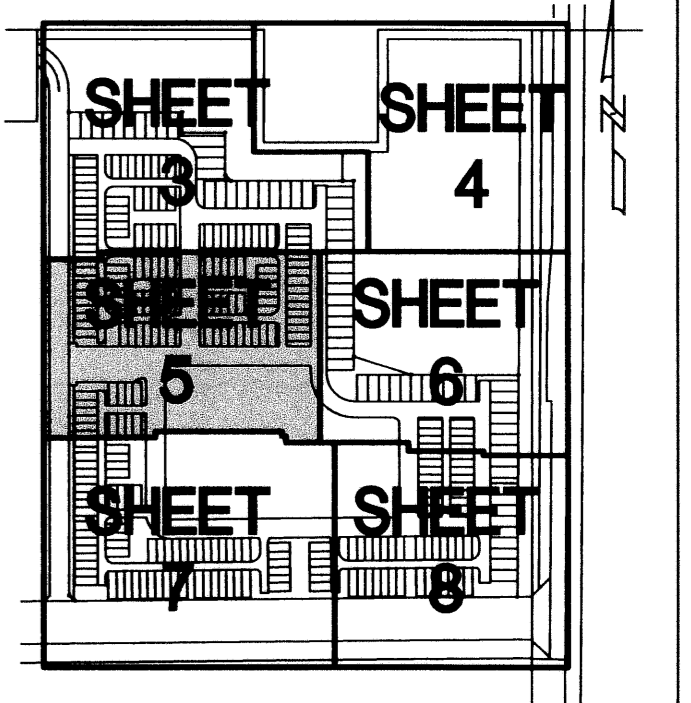
CURVE	LENGTH	RADIUS	DELTA
C50	13.70	10.00	78°28'10"
C61	19.16	20.00	54°54'01"

TRACT TABLE

TRACT	ACRES	SQUARE FEET
A	6.901	300600.49
B	3.744	163070.48
C	0.786	34250.44
D	3.011	131159.16
E	8.00	348480.00



- LEGEND**
- ⊙ - PERMANENT REFERENCE MONUMENT
 - - PERMANENT CONTROL POINT
 - R - RADIUS
 - L - LENGTH
 - Δ - DELTA
 - ⊕ - CENTERLINE
 - D.E. - DRAINAGE EASEMENT
 - L.M.E. - LAKE MAINTENANCE EASEMENT
 - R.O.E. - ROOF OVERHANG EASEMENT
 - U.E. - UTILITY EASEMENT
 - S.E. - LANDSCAPE EASEMENT
 - S.U.A. - SEACOAST UTILITY AUTHORITY
 - OS - OPENSOURCE TRACT
 - WSE - WATER AND SEWER EASEMENT
 - WME - WATER MANAGEMENT EASEMENT
 - WLE - WATER LINE EASEMENT



KEYMAP
SCALE NONE