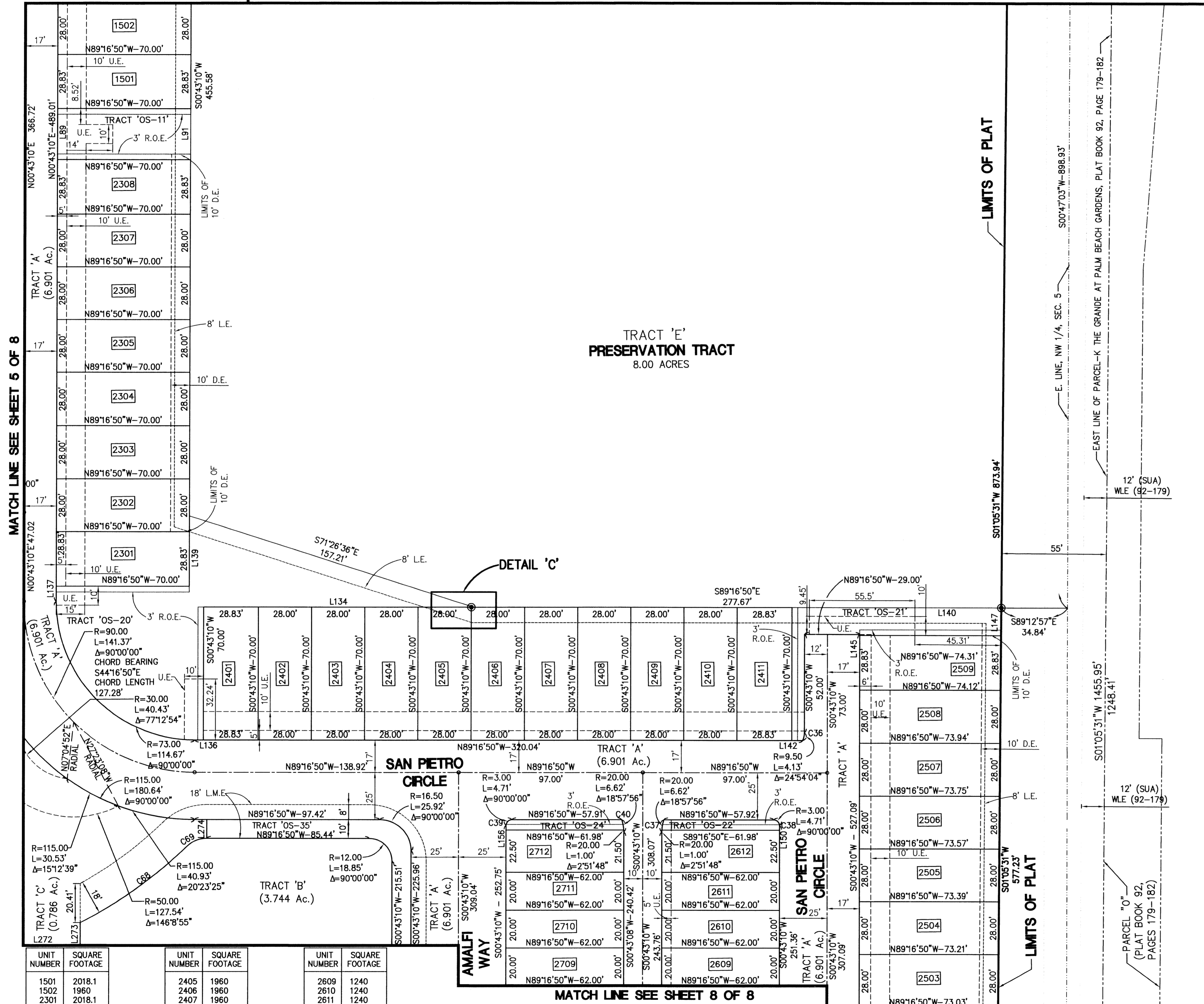


# HARBOUR OAKS

A PARCEL OF LAND LYING AND BEING WITHIN A PORTION OF SECTION 5, TOWNSHIP 42 SOUTH, RANGE 43 EAST, ALSO BEING A REPLAT OF A PORTION OF THE GRANDE AT PALM BEACH GARDENS, PLAT BOOK 92, PAGES 179-182 CITY OF PALM BEACH GARDENS, PALM BEACH COUNTY, FLORIDA

THIS INSTRUMENT WAS PREPARED BY:  
 THOMAS C. SHAHAN, P.S.M. #4387 OF  
**CRAVEN THOMPSON & ASSOCIATES, INC.**  
 ENGINEERS PLANNERS SURVEYORS  
 5114 OCEANSHORE BOULEVARD, SUITE 112, WEST PALM BEACH, FLORIDA 33417  
 TEL: (561) 888-2010 FAX: (561) 888-1037  
 3563 N.W. 5300 STREET FORT LAUDERDALE, FLORIDA 33309  
 TEL: (954) 738-8400 FAX: (954) 738-8409  
 FLORIDA LICENSED ENGINEERING, SURVEYING & MAPPING BUSINESS NO. 271  
 FLORIDA LICENSED LANDSCAPE ARCHITECTURE BUSINESS NO. C00014  
 JANUARY 2003 02-0070

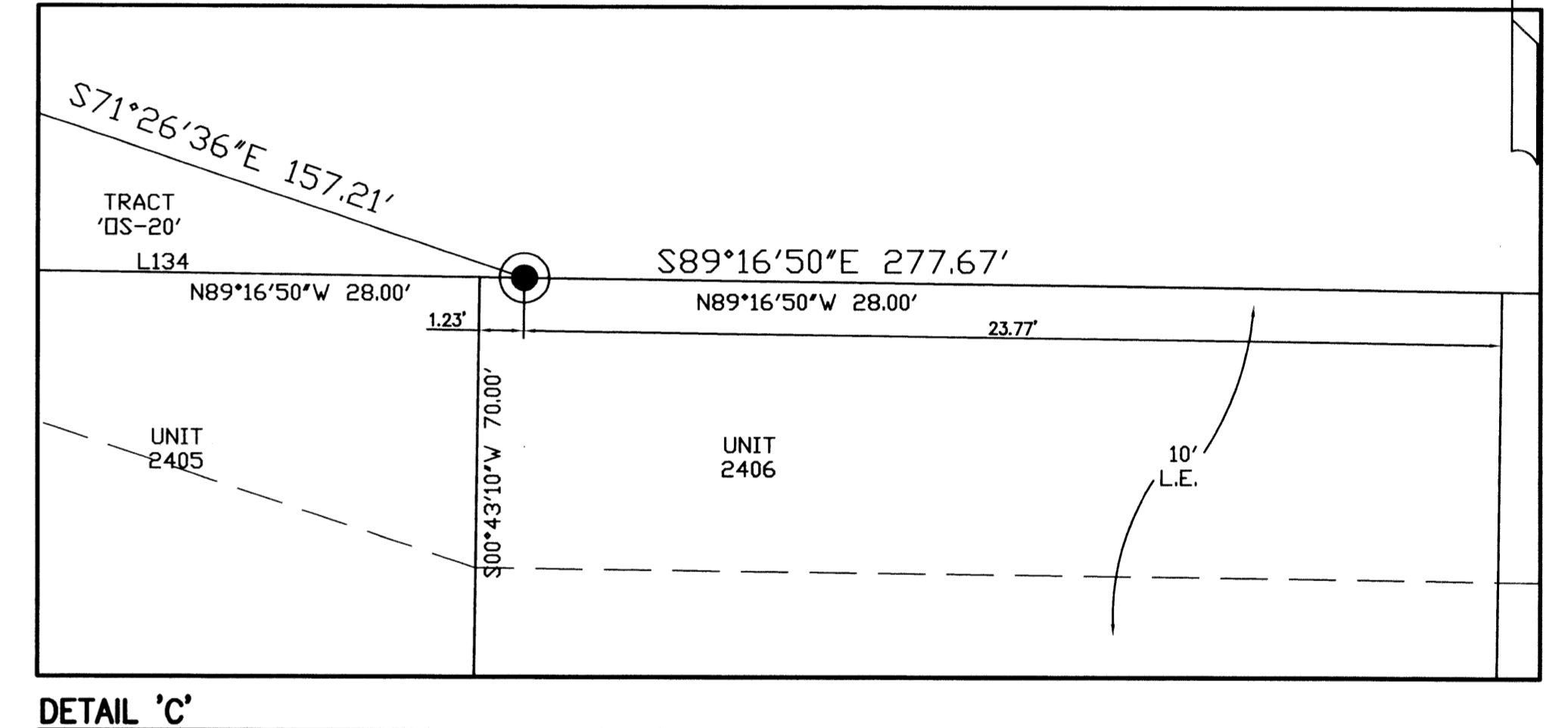
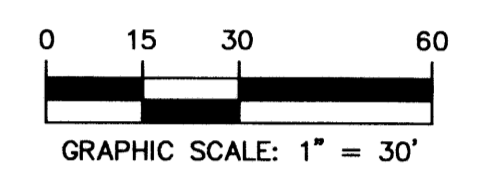
MATCH LINE SEE SHEET 3 OF 8 MATCH LINE SEE SHEET 4 OF 8



LINE	LENGTH	BEARING
L89	27.03	S00°43'10"W
L91	27.03	N00°43'10"E
L134	142.06	N89°16'50"W
L136	4.59	N89°16'50"W
L137	7.89	N00°43'10"E
L139	37.27	N00°43'10"E
L140	110.07	N89°16'50"W
L142	5.79	S89°16'50"E
L145	0.50	S00°43'10"W
L147	14.50	N01°05'31"E
L150	2.50	N00°43'10"E
L156	2.50	S00°43'10"W
L272	121.63	S89°16'50"E
L273	12.15	N00°43'10"E
L274	10.00	N00°43'10"E

STATE OF FLORIDA  
 COUNTY OF PALM BEACH  
 THIS PLAT WAS FILED FOR RECORD AT \_\_\_\_\_  
 THIS \_\_\_\_\_ DAY OF \_\_\_\_\_, 2003  
 AND DULY RECORDED IN PLAT BOOK NO. \_\_\_\_\_  
 ON PAGE \_\_\_\_\_  
 DOROTHY H. WILKEN,  
 CLERK OF THE CIRCUIT COURT  
 BY \_\_\_\_\_ DEPUTY CLERK

SHEET 6 OF 8



DETAIL 'C'

- LEGEND
- ⊙ - PERMANENT REFERENCE MONUMENT
  - - PERMANENT CONTROL POINT
  - R - RADIUS
  - L - LENGTH
  - Δ - DELTA
  - ⊕ - CENTERLINE
  - D.E. - DRAINAGE EASEMENT
  - L.M.E. - LAKE MAINTENANCE EASEMENT
  - R.O.E. - ROOF OVERHANG EASEMENT
  - U.E. - UTILITY EASEMENT
  - L.E. - LANDSCAPE EASEMENT
  - SUA - SEACOAST UTILITY AUTHORITY
  - OS - OPENSPACE TRACT
  - WSE - WATER AND SEWER EASEMENT
  - WME - WATER MANAGEMENT EASEMENT
  - WLE - WATER LINE EASEMENT

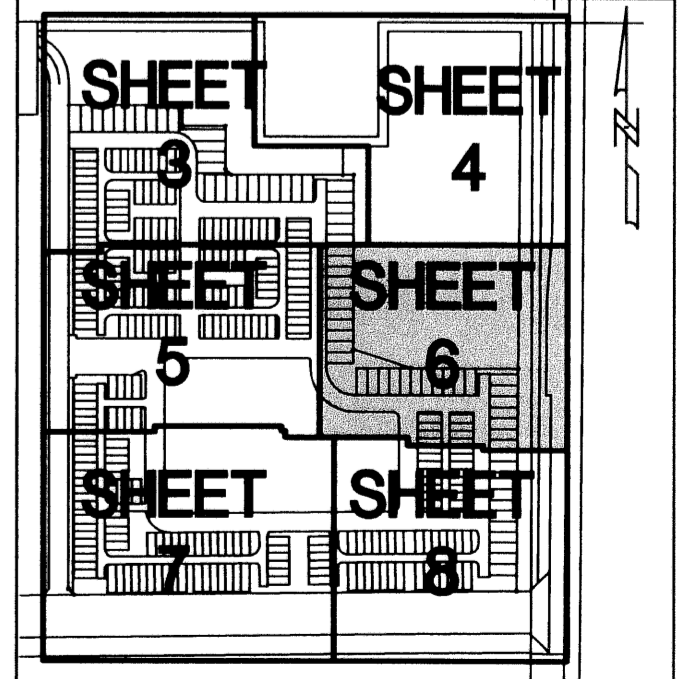
CURVE	LENGTH	RADIUS	DELTA
C36	4.13	9.50	24°54'04"
C37	6.62	20.00	18°57'56"
C38	4.71	3.00	90°00'00"
C39	4.71	3.00	90°00'00"
C40	6.62	20.00	18°57'56"
C68	69.20	224.29	17°40'42"
C69	11.66	15.00	44°31'44"

UNIT NUMBER	SQUARE FOOTAGE	UNIT NUMBER	SQUARE FOOTAGE
1501	2018.1	2405	1960
1502	1960	2406	1960
2301	2018.1	2407	1960
2302	1960	2408	1960
2303	1960	2409	1960
2304	1960	2410	1960
2305	1960	2411	2018.1
2306	1960	2503	2047.29
2307	1960	2504	2052.39
2308	2018.1	2505	2057.49
2401	2018.1	2506	2062.59
2402	1960	2507	2067.68
2403	1960	2508	2072.78
2404	1960	2509	2139.55

UNIT NUMBER	SQUARE FOOTAGE	UNIT NUMBER	SQUARE FOOTAGE
2609	1240	2710	1240
2610	1240	2711	1240
2611	1240	2712	1394.93

OS NUMBER	ACRES	SQUARE FEET
OS-11	0.043	1892.19
OS-20	0.199	8653.03
OS-21	0.045	1949.88
OS-22	0.008	336.26
OS-24	0.008	336.24
OS-35	0.359	15641.16

TRACT	ACRES	SQUARE FEET
A	6.901	300600.49
B	3.744	163070.48
C	0.786	34250.44
D	3.011	131159.16
E	8.00	348480.00



KEYMAP  
 SCALE: NONE