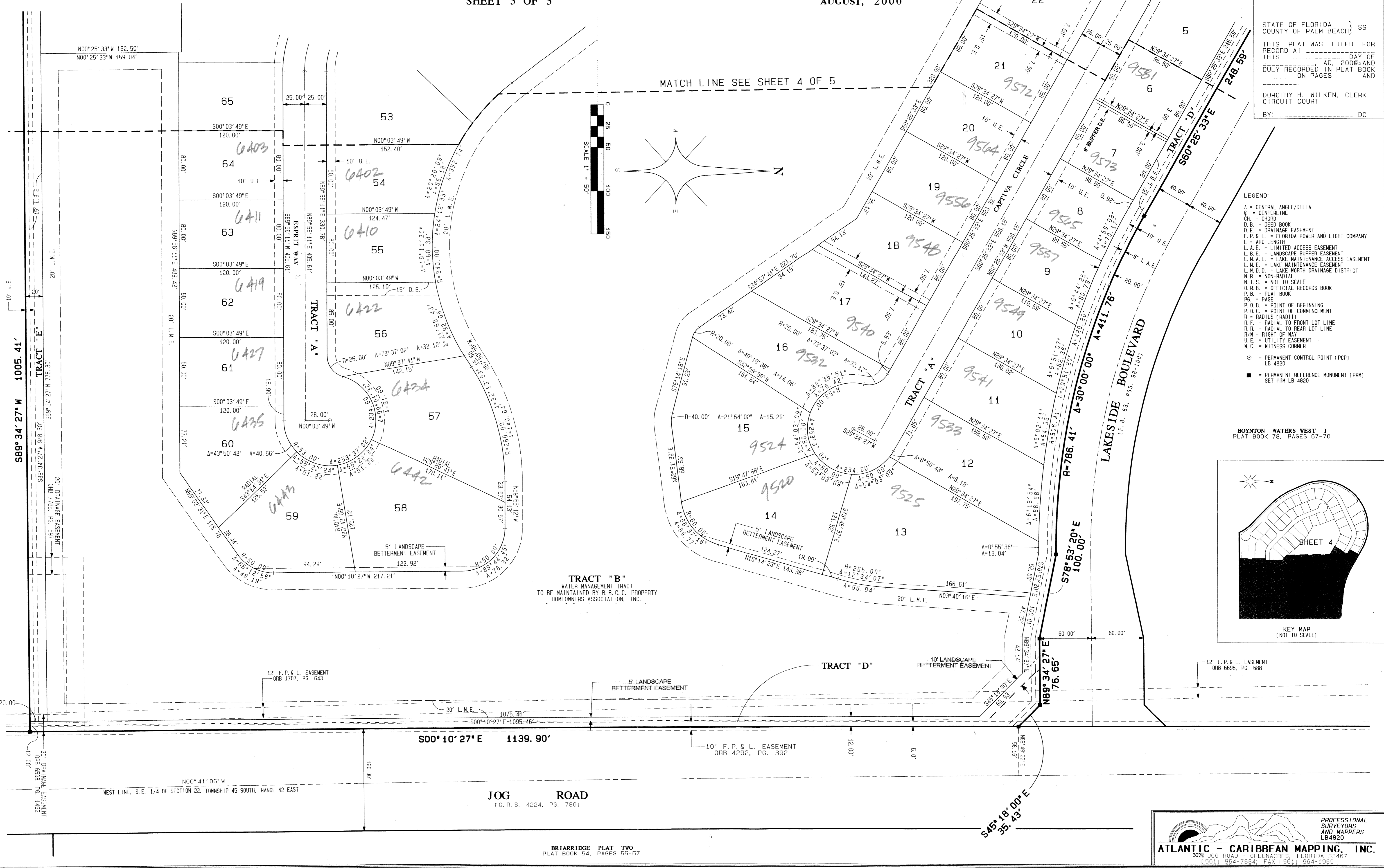


ENCLAVE AT BOYNTON WATERS

AT LAKES OF BOYNTON BEACH P.U.D., POD B
SITUATE IN SECTION 22, TOWNSHIP 45 SOUTH, RANGE 42 EAST, PALM BEACH COUNTY,
FLORIDA, BEING A REPLAT OF A PORTION OF BLOCK 48, "THE PALM BEACH FARMS COMPANY
PLAT NO. 3" AS RECORDED IN PLAT BOOK 2, PAGES 45 THROUGH 54,
OF THE PUBLIC RECORDS OF PALM BEACH COUNTY, FLORIDA
SHEET 5 OF 5
AUGUST, 2000

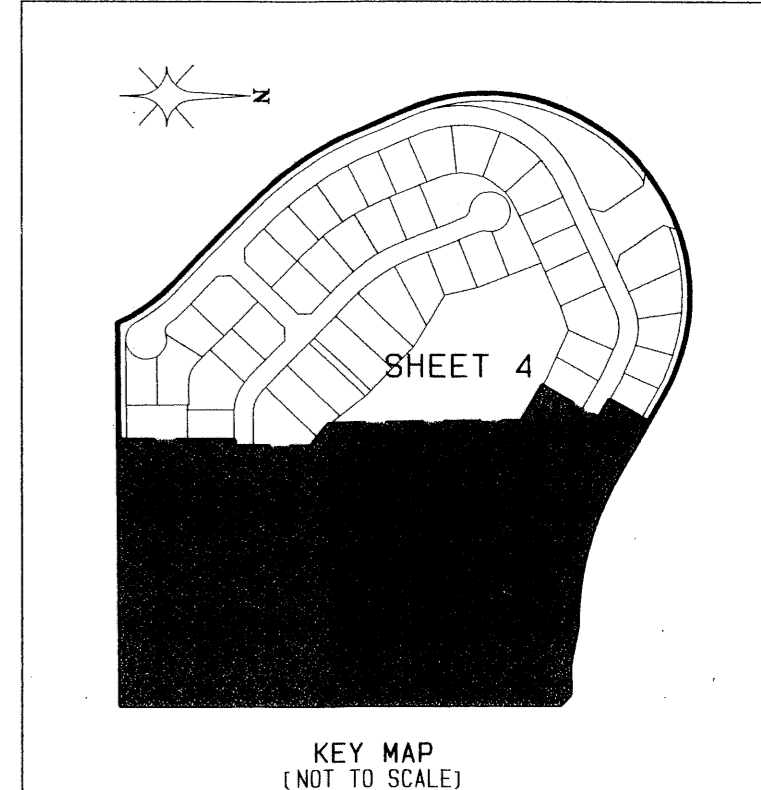
STATE OF FLORIDA } SS
COUNTY OF PALM BEACH }
THIS PLAT WAS FILED FOR
RECORD AT _____ DAY OF
THIS _____ AD, 2000 AND
DULY RECORDED IN PLAT BOOK
_____ ON PAGES _____ AND

DOROTHY H. WILKEN, CLERK
CIRCUIT COURT
BY: _____ DC



- LEGEND:
- A = CENTRAL ANGLE/Delta
 - C = CENTERLINE
 - CH = CHORD
 - D.B. = DEED BOOK
 - D.E. = DRAINAGE EASEMENT
 - F.P. & L. = FLORIDA POWER AND LIGHT COMPANY
 - L.A.E. = LIMITED ACCESS EASEMENT
 - L.B.E. = LANDSCAPE BUFFER EASEMENT
 - L.M.A.E. = LAKE MAINTENANCE ACCESS EASEMENT
 - L.M.E. = LAKE MAINTENANCE EASEMENT
 - L.N.D. = LAKE NORTH DRAINAGE DISTRICT
 - N.R. = NON-RADIAL
 - N.T.S. = NOT TO SCALE
 - O.R.B. = OFFICIAL RECORDS BOOK
 - P.B. = PLAT BOOK
 - PG. = PAGE
 - P.O.B. = POINT OF BEGINNING
 - P.O.C. = POINT OF COMMENCEMENT
 - R = RADIUS (RADII)
 - R.F. = RADIAL TO FRONT LOT LINE
 - R.R. = RADIAL TO REAR LOT LINE
 - R/W = RIGHT OF WAY
 - U.E. = UTILITY EASEMENT
 - W.C. = WITNESS CORNER
- PERMANENT CONTROL POINT (PCP)
LB 4820
 - PERMANENT REFERENCE MONUMENT (PRM)
SET PRM LB 4820

BOYNTON WATERS WEST 1
PLAT BOOK 78, PAGES 67-70



SUBDIVISION ENCLAVE AT BOYNTON WATERS
BOOK 99
PAGE 109
FLOOD MAP #/B/C/A
ZONING RS
QUAD # 25
SEL 295-1318
TAZ 443
PUD NAME LAKES OF BOYNTON BEACH POD B

ATLANTIC - CARIBBEAN MAPPING, INC.
3070 JOG ROAD - GREENACRES, FLORIDA 33457
(561) 964-7884; FAX (561) 964-1969

PROFESSIONAL
SURVEYORS
AND MAPPERS
LB4820