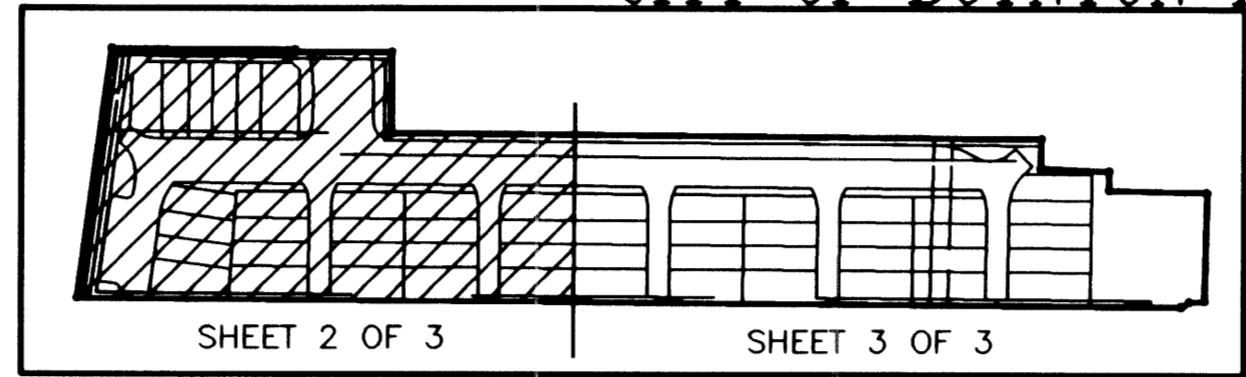


# "THE HARBORS, A PUD"

A REPLAT OF A PORTION OF LOTS 5 AND 6, SAM BROWN JR.'S HYPOLUXO SUBDIVISION,  
AS RECORDED IN PLAT BOOK 1, PAGE 81, PALM BEACH COUNTY RECORDS,  
LYING IN THE SOUTH HALF OF SECTION 15, TOWNSHIP 45 SOUTH, RANGE 43 EAST,  
CITY OF BOYNTON BEACH, PALM BEACH COUNTY, FLORIDA

COUNTY OF PALM BEACH }  
STATE OF FLORIDA } SS  
THIS PLAT WAS FILED FOR  
RECORD AT \_\_\_\_\_  
THIS \_\_\_\_\_ DAY OF \_\_\_\_\_  
2003,  
AND DULY RECORDED  
IN PLAT BOOK NO. \_\_\_\_\_  
AT PAGE(S) \_\_\_\_\_  
DOROTHY H. WILKENS, CLERK  
BY: \_\_\_\_\_  
DEPUTY CLERK

Las Palmas Drive  
f/k/a VISTA HERMOSA  
50' R/W  
(P.B. 25, PG. 242, P.B.C.R.)



LOCATION SKETCH  
NOT TO SCALE

FOUND P.B.C. DISC  
N.W. CORNER SECTION 15,  
TOWNSHIP 45 SOUTH, RANGE 43 EAST  
CORNER RECORD NO. 53573.23122  
N=804267.6100  
E=964012.9990

FOUND P.B.C. DISC  
WEST 1/4 CORNER SECTION 15,  
TOWNSHIP 45 SOUTH, RANGE 43 EAST  
CORNER RECORD NO. 53564.23165  
N=806874.3380  
E=963957.6270

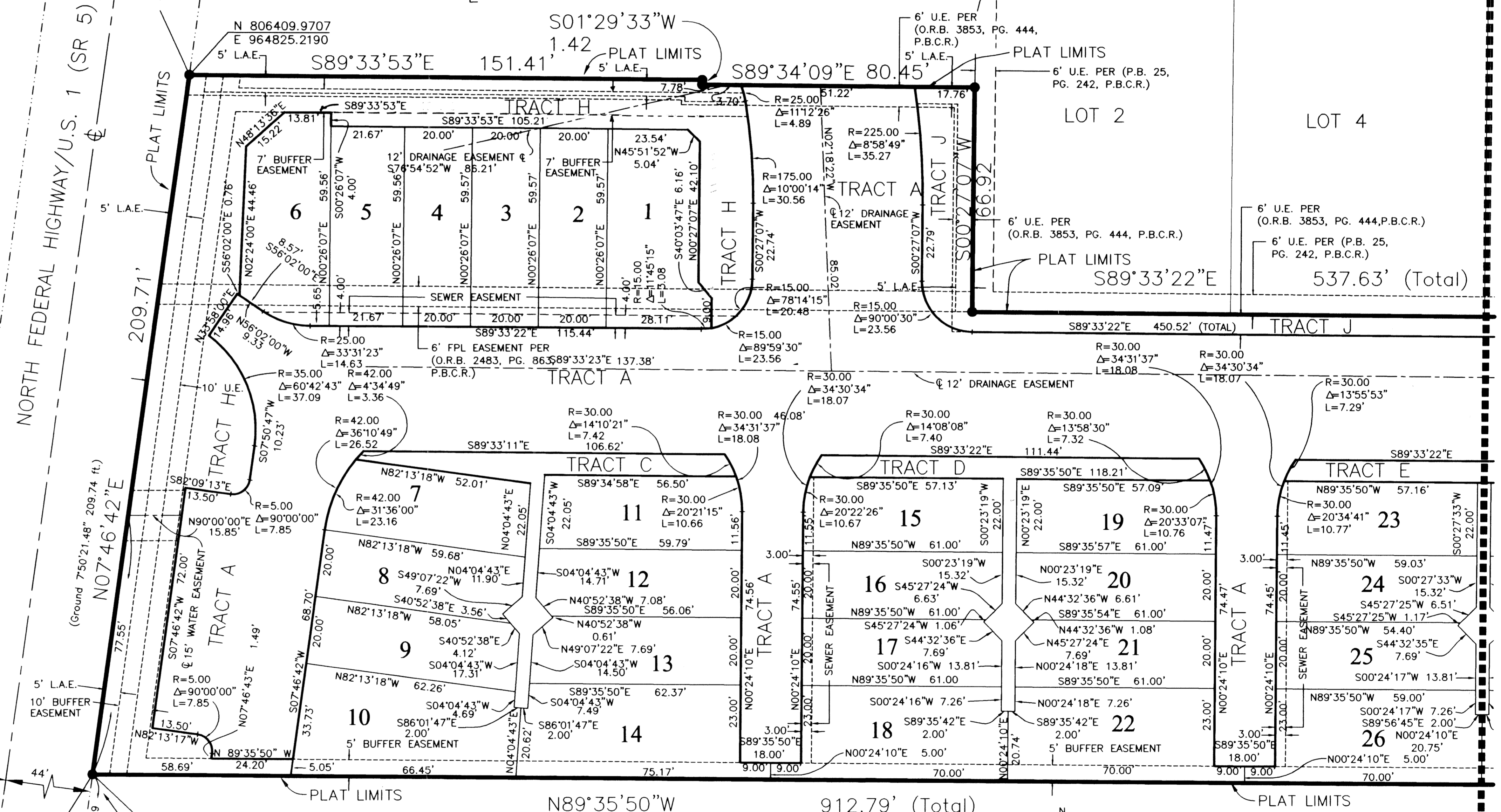
FOUND P.B.C. DISC  
S.W. CORNER SECTION 15,  
TOWNSHIP 45 SOUTH, RANGE 43 EAST  
CORNER RECORD NO. 53563  
N=809481.2910  
E=963902.0960

- LEGEND:**
- L.B. LICENSED BUSINESS
  - P.B. PLAT BOOK
  - P.B.C.R. PALM BEACH COUNTY RECORDS
  - P.B.C. PALM BEACH COUNTY
  - PG. PAGE
  - PERMANENT REFERENCE MONUMENT
  - R/W RIGHT-OF-WAY
  - SQ. FT. SQUARE FEET
  - NGVD NATIONAL GEODETIC VERTICAL DATUM OF 1929
  - Δ DELTA
  - R RADIUS
  - L LENGTH
  - a/k/a ALSO KNOWN AS
  - f/k/a FORMERLY KNOWN AS
  - L.A.E. LIMITED ACCESS EASEMENT

FLORIDA EAST COAST RAILROAD

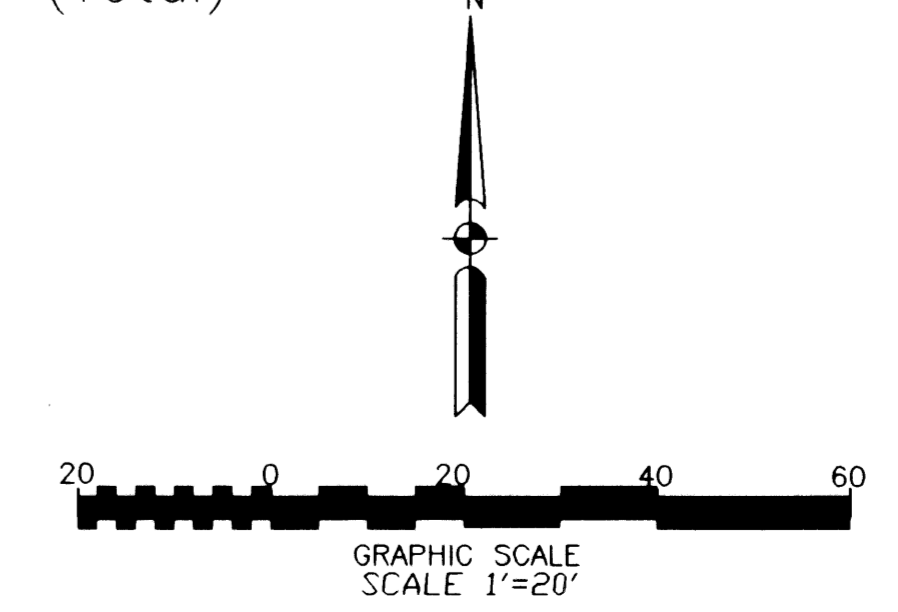
NORTH FEDERAL HIGHWAY/U.S. 1 (SR 5)

Gateway Boulevard  
a/k/a/  
NE 22ND AVENUE



SAM BROWN JR.'S  
HYPOLUXO SUBDIVISION  
(P.B.1, PG. 81, P.B.C.R.)

SEE SHEET 3 OF 3 FOR PLAT NOTES



PREPARED BY:  
**KEITH**  
consulting engineers  
301 EAST ATLANTIC BOULEVARD  
POMPANO BEACH, FLORIDA 33060-6643  
(954)788-3400 FAX(954)788-3500  
EMAIL:mail@keith-associates.com LB NO. 6860

(MATCHLINE SEE SHEET 3)