

# FRENCHMAN'S RESERVE PCD - PLAT "H"

BEING A REPLAT OF TRACT H, FRENCHMAN'S RESERVE PCD - PLAT ONE  
AS RECORDED IN PLAT BOOK 92, PAGE 11-20,  
PALM BEACH COUNTY, FLORIDA

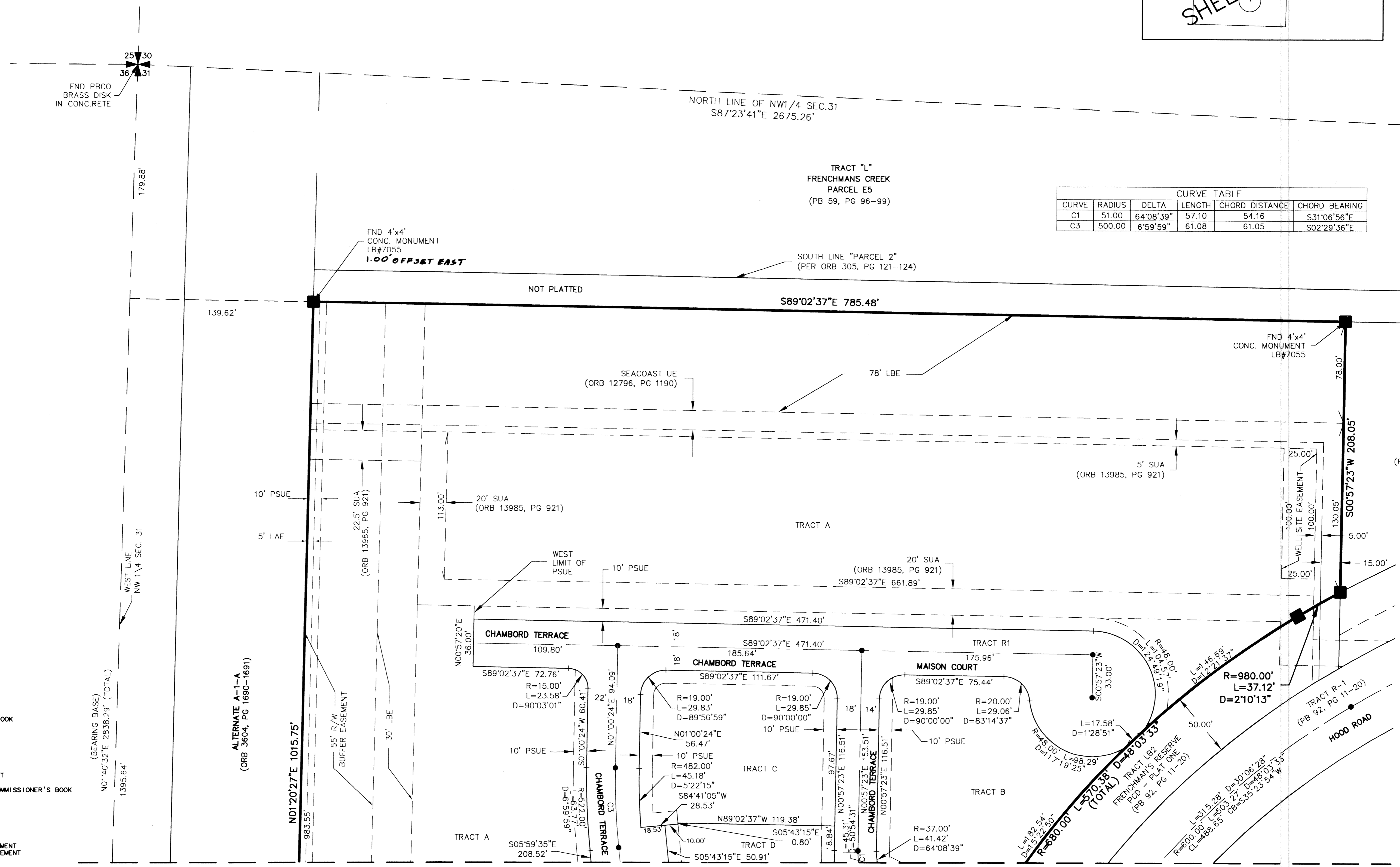
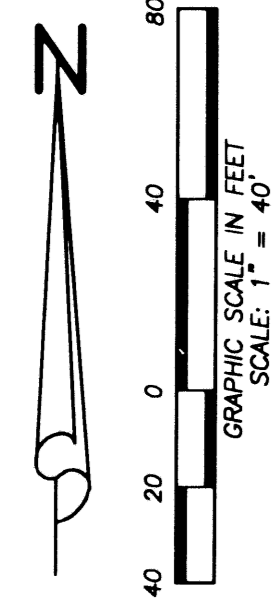
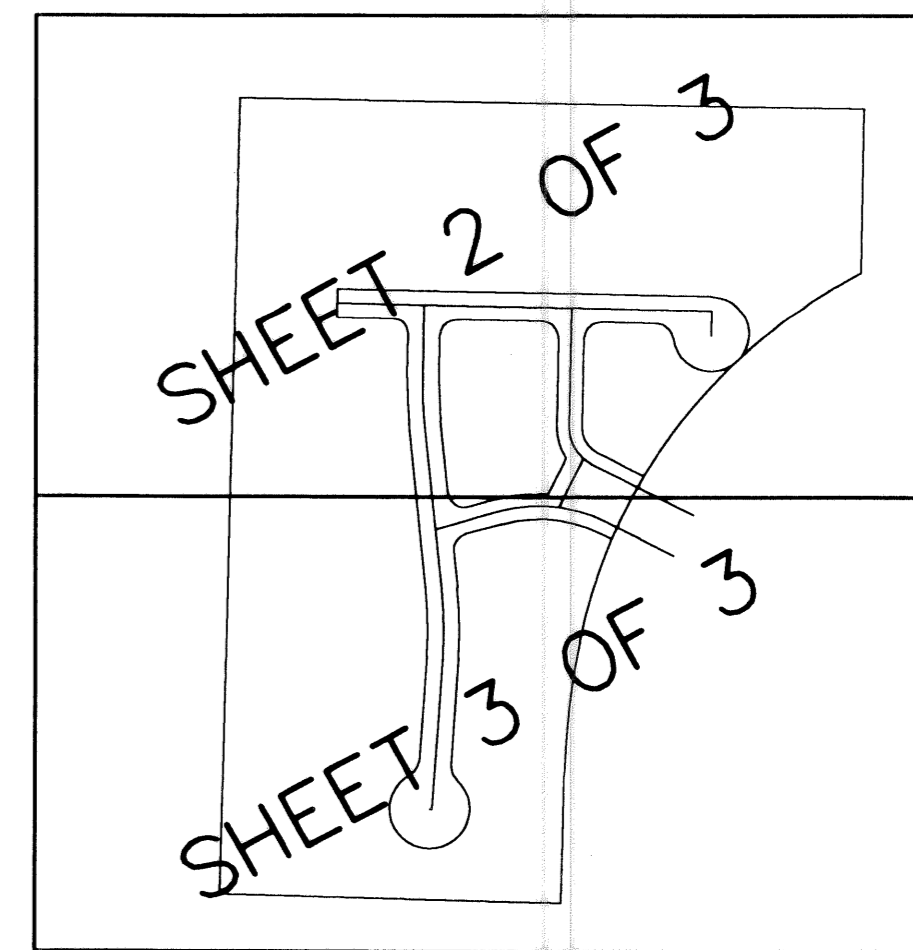
LYING IN SECTION 31,  
TOWNSHIP 41 SOUTH, RANGE 43 EAST, CITY OF PALM BEACH  
GARDENS, PALM BEACH COUNTY, FLORIDA.

JUNE, 2003 SHEET 2 OF 3

# 136

STATE OF FLORIDA  
COUNTY OF PALM BEACH  
THIS PLAT WAS FILED FOR  
RECORD AT \_\_\_\_\_ M.  
THIS \_\_\_\_\_ DAY OF \_\_\_\_\_  
A.D. 2003 AND DULY RECORDED  
IN PLAT BOOK \_\_\_\_\_ ON  
PAGES \_\_\_\_\_ AND \_\_\_\_\_  
DOROTHY H. WILKEN  
CLERK CIRCUIT COURT

BY: \_\_\_\_\_  
DEPUTY CLERK



CURVE	RADIUS	DELTA	LENGTH	CHORD DISTANCE	CHORD BEARING
C1	51.00	64°08'39"	57.10	54.16	S31°06'56"E
C3	500.00	6°59'59"	61.08	61.05	S02°29'36"E

- LEGEND:**
- CB = CHORD BEARING
  - CL = CHORD LENGTH
  - CMB = COMMISSIONERS' MINUTES BOOK
  - CONC. = CONCRETE
  - D = DELTA
  - DE = DRAINAGE EASEMENT
  - DB = DEED BOOK
  - FND = FOUND
  - L = LENGTH
  - LAE = LIMITED ACCESS EASEMENT
  - LBE = LANDSCAPE BUFFER EASEMENT
  - LB = LICENSED BUSINESS
  - MCCB = MINUTES OF THE COUNTY COMMISSIONER'S BOOK
  - MON = MONUMENT
  - ORB = OFFICIAL RECORD BOOK
  - PB = PLAT BOOK
  - PBCO = PALM BEACH COUNTY
  - PG = PAGE
  - POB = POINT OF BEGINNING
  - POC = POINT OF COMMENCEMENT
  - PRM = PERMANENT REFERENCE MONUMENT
  - PSUE = PRIVATE SPECIFIC USE EASEMENT
  - R = RADIUS
  - R/W = RIGHT-OF-WAY
  - RPB = ROAD PLAT BOOK
  - SEC. = SECTION
  - SUA = SEACOAST UTILITY AUTHORITY
  - SUE = SEACOAST UTILITY EASEMENT
  - WME = WATER MANAGEMENT EASEMENT
  - WSE = WATER AND SEWER EASEMENT
  - UE = UTILITY EASEMENT
  - = SET P&DISK "PERMANENT CONTROL POINT" "LB#7055"
  - = SET 4"x4" CONC. RETE MONUMENT "LB#7055" UNLESS OTHERWISE NOTED
  - = FOUND P&DISK "PERMANENT CONTROL POINT" "LB#7055" UNLESS OTHERWISE NOTED

MATCHLINE SHEET 3 OF 3

**Wantman Group, Inc.**  
Engineering ♦ Surveying ♦ Mapping  
901 NORTHPOINT PARKWAY, SUITE 204  
WEST PALM BEACH, FL 33407  
(561) 687-2220 phone (561) 687-1110 fax  
CERT No. 6091 - LB No. 7055

CAD	K:\TOLLBROS\FRENCHMAN\DWG\218PLATH		
REF	K:\TOLLBROS\FRENCHMAN\DWG\218MG01		
FLD	FB.	PG.	JOB 199218.OH
OFF	MRJ, JKA		DATE 3/19/03
CKD	PV	SHEET 2 OF 3	REVISE