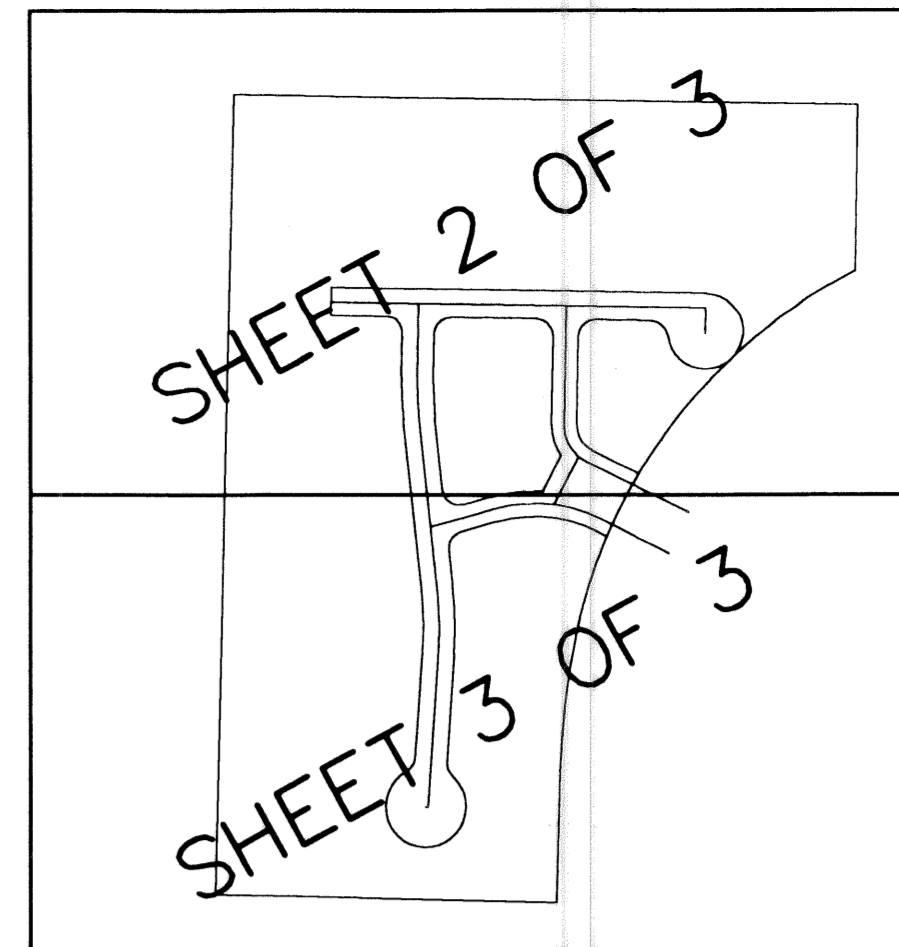
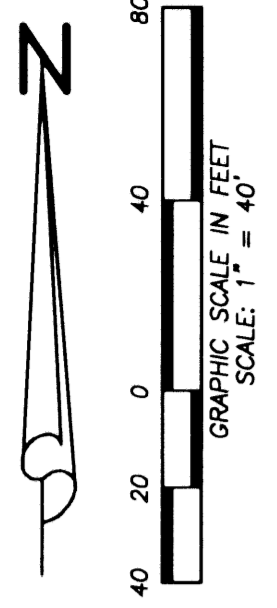


FRENCHMAN'S RESERVE PCD - PLAT "H"

BEING A REPLAT OF TRACT H, FRENCHMAN'S RESERVE PCD - PLAT ONE
AS RECORDED IN PLAT BOOK 92, PAGE 11-20,
PALM BEACH COUNTY, FLORIDA

LYING IN SECTION 31,
TOWNSHIP 41 SOUTH, RANGE 43 EAST, CITY OF PALM BEACH
GARDENS, PALM BEACH COUNTY, FLORIDA.

JUNE, 2003 SHEET 3 OF 3

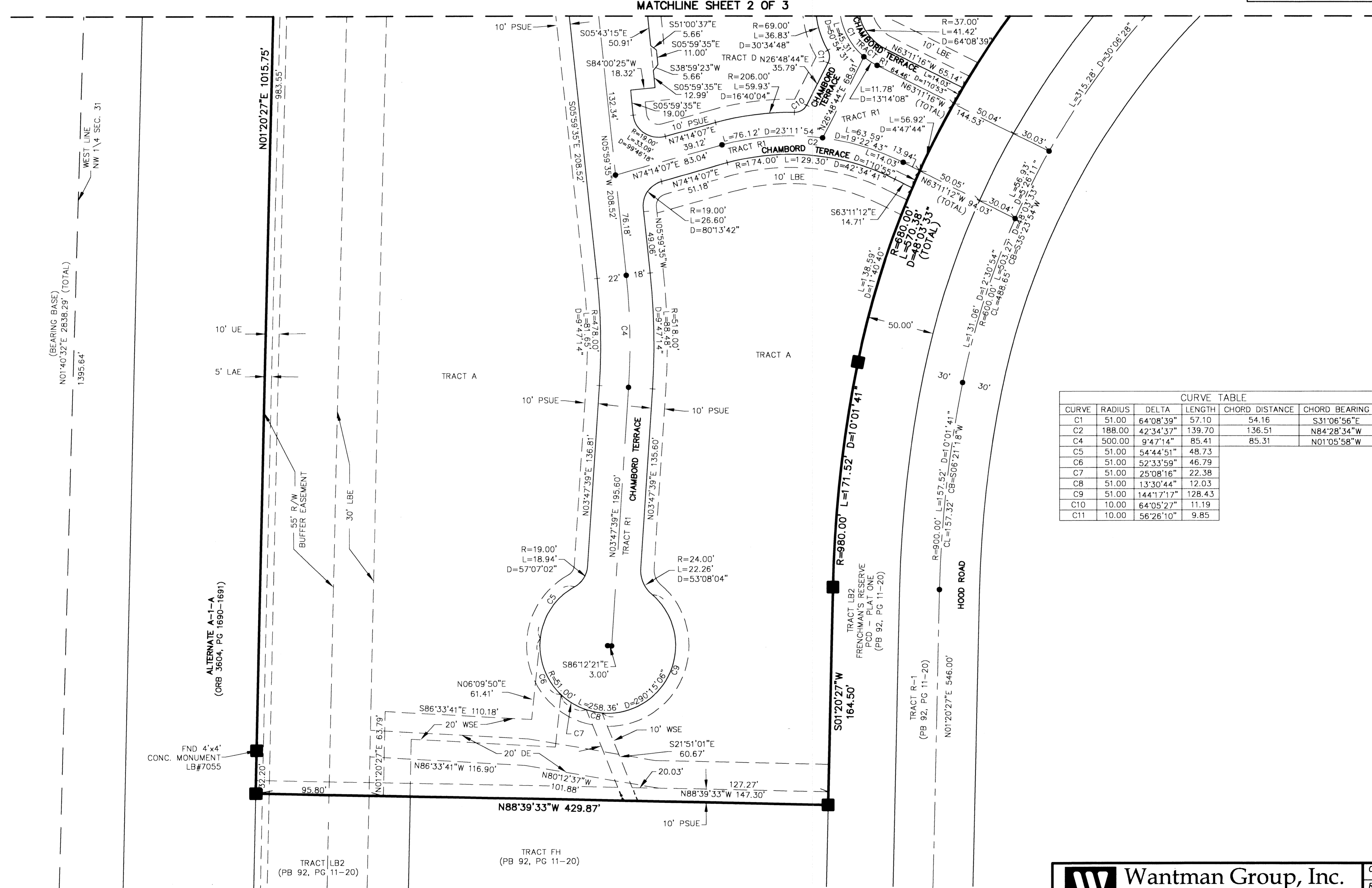


137

STATE OF FLORIDA
COUNTY OF PALM BEACH
THIS PLAT WAS FILED FOR
RECORD AT _____ M.
THIS _____ DAY OF _____
A.D. 2003 AND DULY RECORDED
IN PLAT BOOK _____ ON
PAGES _____ AND _____

DOROTHY H. WILKEN
CLERK CIRCUIT COURT

BY: _____
DEPUTY CLERK



CURVE	RADIUS	DELTA	LENGTH	CHORD DISTANCE	CHORD BEARING
C1	51.00	64°08'39"	57.10	54.16	S31°06'56"E
C2	188.00	42°34'37"	139.70	136.51	N84°28'34"W
C4	500.00	9°47'14"	85.41	85.31	N01°05'58"W
C5	51.00	54°44'51"	48.73		
C6	51.00	52°33'59"	46.79		
C7	51.00	25°08'16"	22.38		
C8	51.00	13°30'44"	12.03		
C9	51.00	144°17'17"	128.43		
C10	10.00	64°05'27"	11.19		
C11	10.00	56°26'10"	9.85		

- LEGEND:**
- CB = CHORD BEARING
 - CL = CHORD LENGTH
 - COMB = COMMISSIONER'S MINUTES BOOK
 - CONC. = CONCRETE
 - D = DELTA
 - DE = DRAINAGE EASEMENT
 - DB = DEED BOOK
 - FND = FOUND
 - L = LENGTH
 - LAE = LIMITED ACCESS EASEMENT
 - LBE = LANDSCAPE BUFFER EASEMENT
 - LB = LICENSED BUSINESS
 - MCCB = MINUTES OF THE COUNTY COMMISSIONER'S BOOK
 - MON = MONUMENT
 - ORB = OFFICIAL RECORD BOOK
 - PB = PLAT BOOK
 - PBCO = PALM BEACH COUNTY
 - PC = PAGE
 - PGB = POINT OF BEGINNING
 - POC = POINT OF COMMENCEMENT
 - PRM = PERMANENT REFERENCE MONUMENT
 - PSUE = PRIVATE SPECIFIC USE EASEMENT
 - R = RADIUS
 - R/W = RIGHT-OF-WAY
 - RFB = ROAD PLAT BOOK
 - SEC. = SECTION
 - SUA = SEACOAST UTILITY AUTHORITY
 - SUE = SEACOAST UTILITY EASEMENT
 - WME = WATER MANAGEMENT EASEMENT
 - WSE = WATER AND SEWER EASEMENT
 - UE = UTILITY EASEMENT
 - = SET PK40/SK *PERMANENT CONTROL POINT* "LB#7055"
 - = SET 4"x4" CONC. RETE MONUMENT "LB#7055" UNLESS OTHERWISE NOTED
 - = FOUND PK40/SK *PERMANENT CONTROL POINT* "LB#7055" UNLESS OTHERWISE NOTED

W Wantman Group, Inc.
Engineering ♦ Surveying ♦ Mapping
901 NORTHPOINT PARKWAY, SUITE 204
WEST PALM BEACH, FL 33407
(561) 687-2220 phone (561) 687-1110 fax
CERT No. 6091 - LB No. 7055

CAD	K:\TOLLBROS\FRENCHMAN\DWG\218PLATH		
REF	K:\TOLLBROS\FRENCHMAN\DWG\218MG01		
FLD	FB.	PC.	JOB 199218.OH
OFF	MRJ, JKA		DATE 3/19/03
CKD	pv	SHEET 3 OF 3	REVISE