

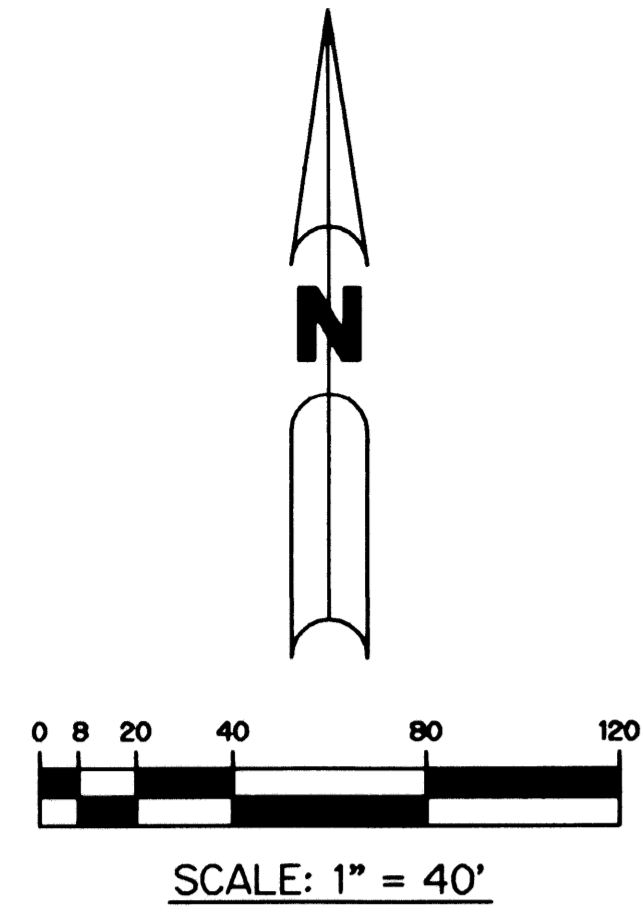
# MAGNOLIA BAY

A PARCEL OF LAND SITUATE IN SECTIONS 25 AND 36, TOWNSHIP 41 SOUTH, RANGE 42 EAST, CITY OF PALM BEACH GARDENS, PALM BEACH COUNTY, FLORIDA.

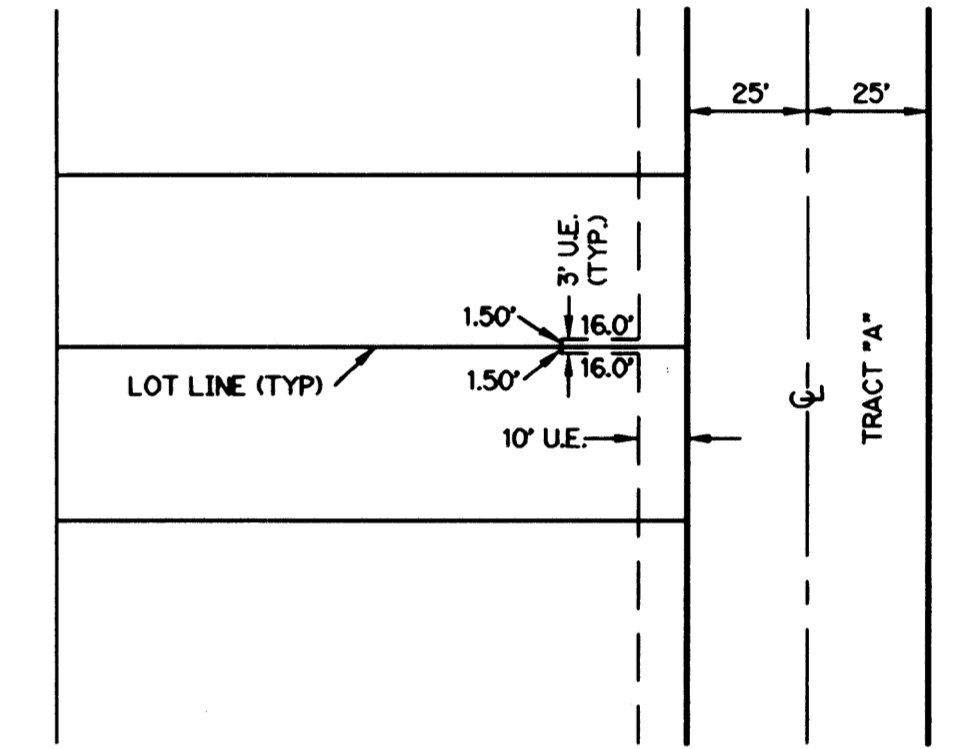
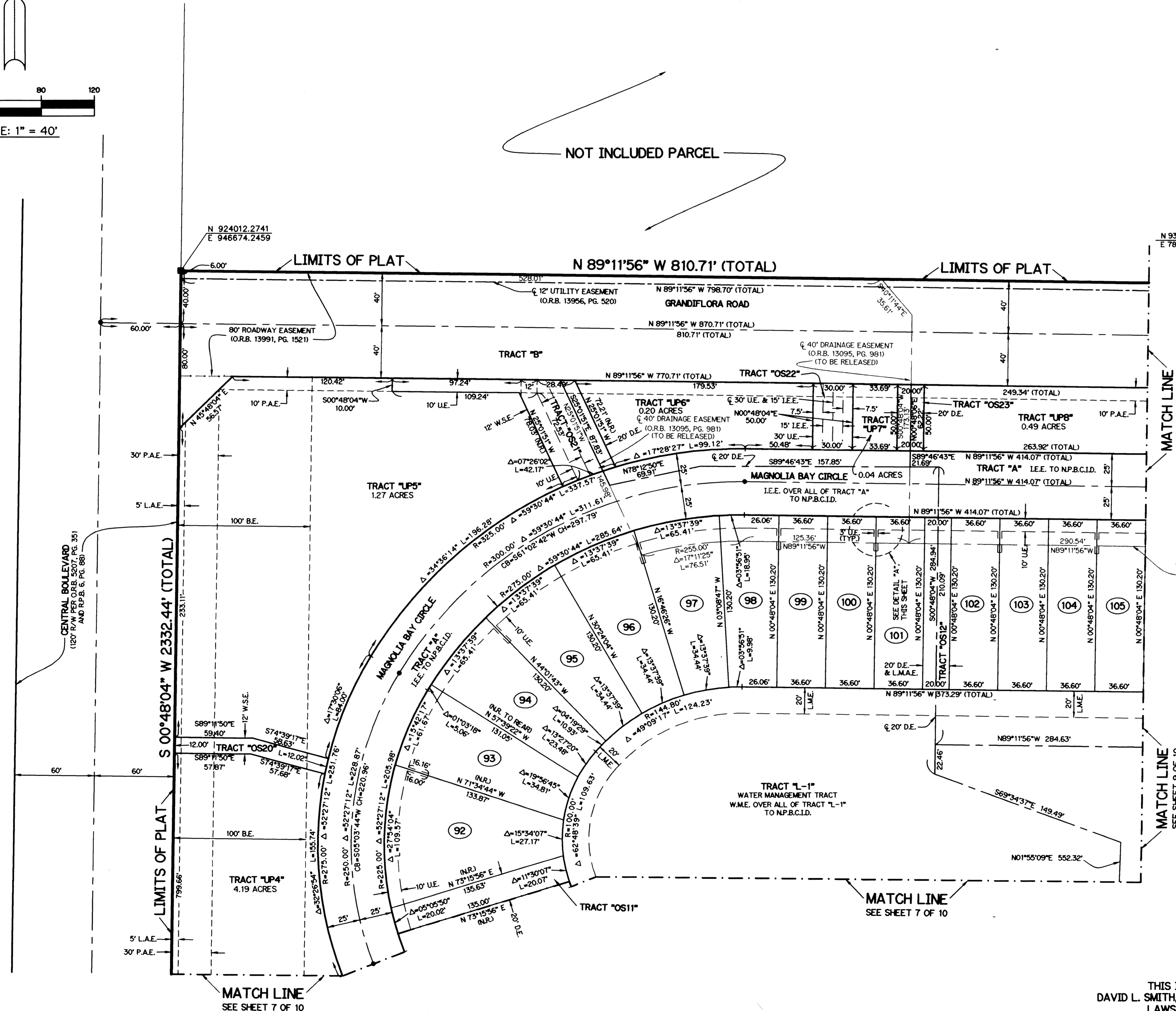
SHEET 8 OF 10 MAY, 2003

### LEGEND:

- - SET PERMANENT REFERENCE MONUMENT, L.B. #6674
  - - FOUND PERMANENT REFERENCE MONUMENT, L.B. #6674
  - - SET PERMANENT CONTROL POINT, L.B. #6674
  - - FOUND PERMANENT CONTROL POINT, L.B. #6674
  - Δ - DELTA ANGLE
  - B.E. - BUFFER EASEMENT
  - CB - CHORD BEARING
  - CH - CHORD DISTANCE
  - CL - CENTERLINE
  - D.B. - DEED BOOK
  - D.E. - DRAINAGE EASEMENT
  - I.E.E. - INGRESS EGRESS EASEMENT
  - L - ARC LENGTH
  - L.A.E. - LIMITED ACCESS EASEMENT
  - L.M.A.E. - LAKE MAINTENANCE ACCESS EASEMENT
  - L.M.E. - LAKE MAINTENANCE EASEMENT
  - N.P.B.C.I.D. - NORTHERN PALM BEACH COUNTY IMPROVEMENT DISTRICT
  - N.R. - NOT RADIAL
  - N.T.S. - NOT TO SCALE
  - O.R.B. - OFFICIAL RECORD BOOK
  - P.A.E. - PEDESTRIAN ACCESS EASEMENT
  - P.B. - PLAT BOOK
  - P.S. - PAGES
  - P.S.M. - PROFESSIONAL SURVEYOR AND MAPPER
  - R - RADIUS
  - RAD. - RADIAL
  - R/W - RIGHT-OF-WAY
  - S.T. - SURVEY TIE
  - U.E. - UTILITY EASEMENT
  - W.M.M.E. - WATER MANAGEMENT MAINTENANCE EASEMENT
  - W.M.E. - WATER MANAGEMENT EASEMENT
  - W.S.E. - WATER AND SEWER EASEMENT
  - W.R. - NON-RADIAL
  - (R.F.) - RADIAL TO FRONT
  - (R.R.) - RADIAL TO REAR
- N 931379.1119  
E 785294.7754 - DENOTES STATE PLANE COORDINATES

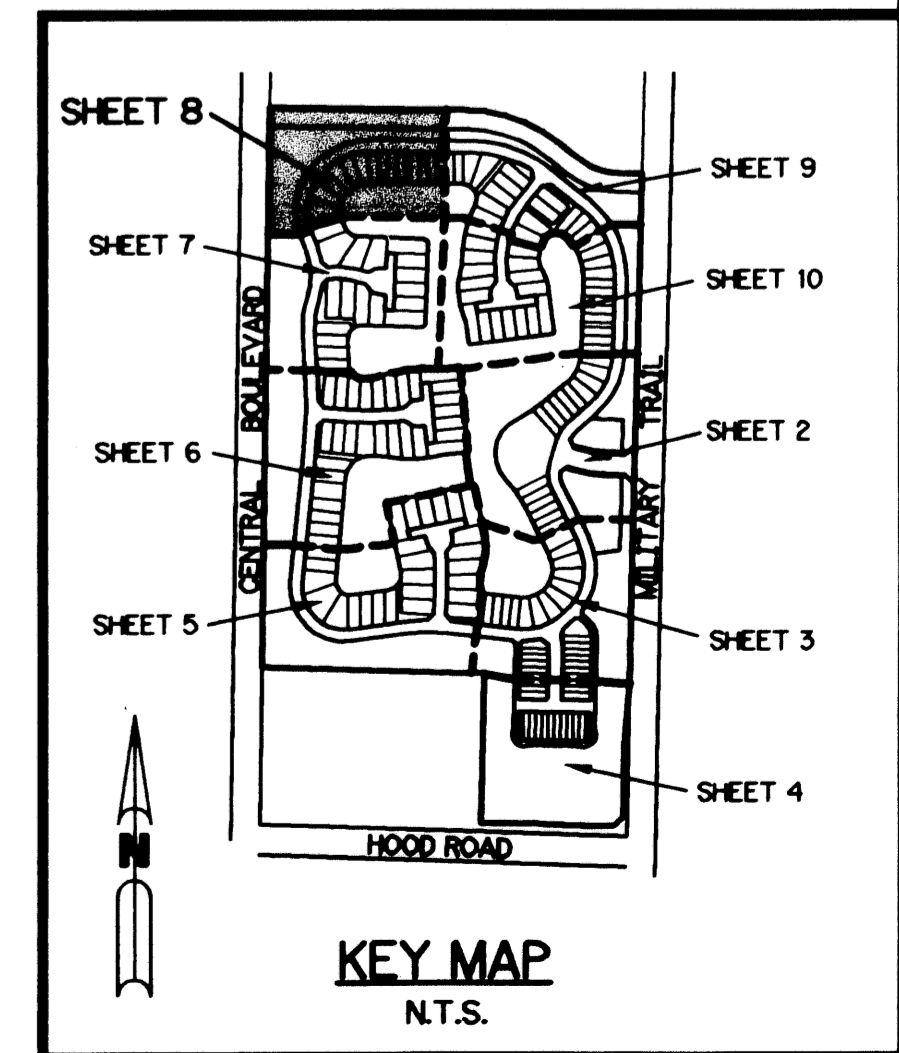


NOT INCLUDED PARCEL



DETAIL "A"  
(TYPICAL UNLESS NOTED)  
SCALE: 1"=40'

**NOTE:**  
 COORDINATES SHOWN ARE GRID COORDINATES  
 DATUM = NAD 83 (1990 ADJUSTMENT)  
 ZONE = FLORIDA EAST ZONE  
 LINEAR UNIT = U.S. SURVEY FEET  
 COORDINATE SYSTEM 1983 STATE PLANE  
 TRANSVERSE MERCATOR PROJECTION  
 ALL DISTANCES ARE GROUND  
 SCALE FACTOR = 1.0000397  
 N01°13'53"E (PLAT BEARING)  
 N01°13'53"E (GRID BEARING)  
 ZERO ROTATION, PLAT TO GRID



THIS INSTRUMENT PREPARED BY  
 DAVID L. SMITH, P.S.M. LS-4951, STATE OF FLORIDA  
 LAWSON, NOBLE AND WEBB, INC.  
 ENGINEERS PLANNERS SURVEYORS  
 420 COLUMBIA DRIVE, SUITE 110  
 WEST PALM BEACH, FLORIDA 33409  
 LB 6674