

STATE OF FLORIDA
COUNTY OF PALM BEACH
THIS PLAT WAS FILED FOR
RECORD AT _____ M.
THIS _____ DAY OF
A.D. 2003 AND DULY RECORDED
IN PLAT BOOK _____ ON
PAGES _____ AND _____
DOROTHY H. WILKEN
CLERK CIRCUIT COURT

By: _____
DEPUTY CLERK

DIAMOND "C" RANCH

A PLANNED UNIT DEVELOPMENT, BEING A REPLAT OF ALL OF "PINELAND PARK", AS RECORDED IN PLAT BOOK 11, PAGE 62, AND
A REPLAT OF A PORTION OF BLOCKS 7, 8, 10 AND 11, "PALM BEACH FARMS COMPANY PLAT NO. 3, AS RECORDED IN PLAT BOOK 2, PAGES 45 THROUGH 54,
ALL OF THE PUBLIC RECORDS OF PALM BEACH COUNTY, FLORIDA, LYING IN SECTIONS 5 AND 6, TOWNSHIP 44 SOUTH, RANGE 42 EAST, PALM BEACH COUNTY, FLORIDA

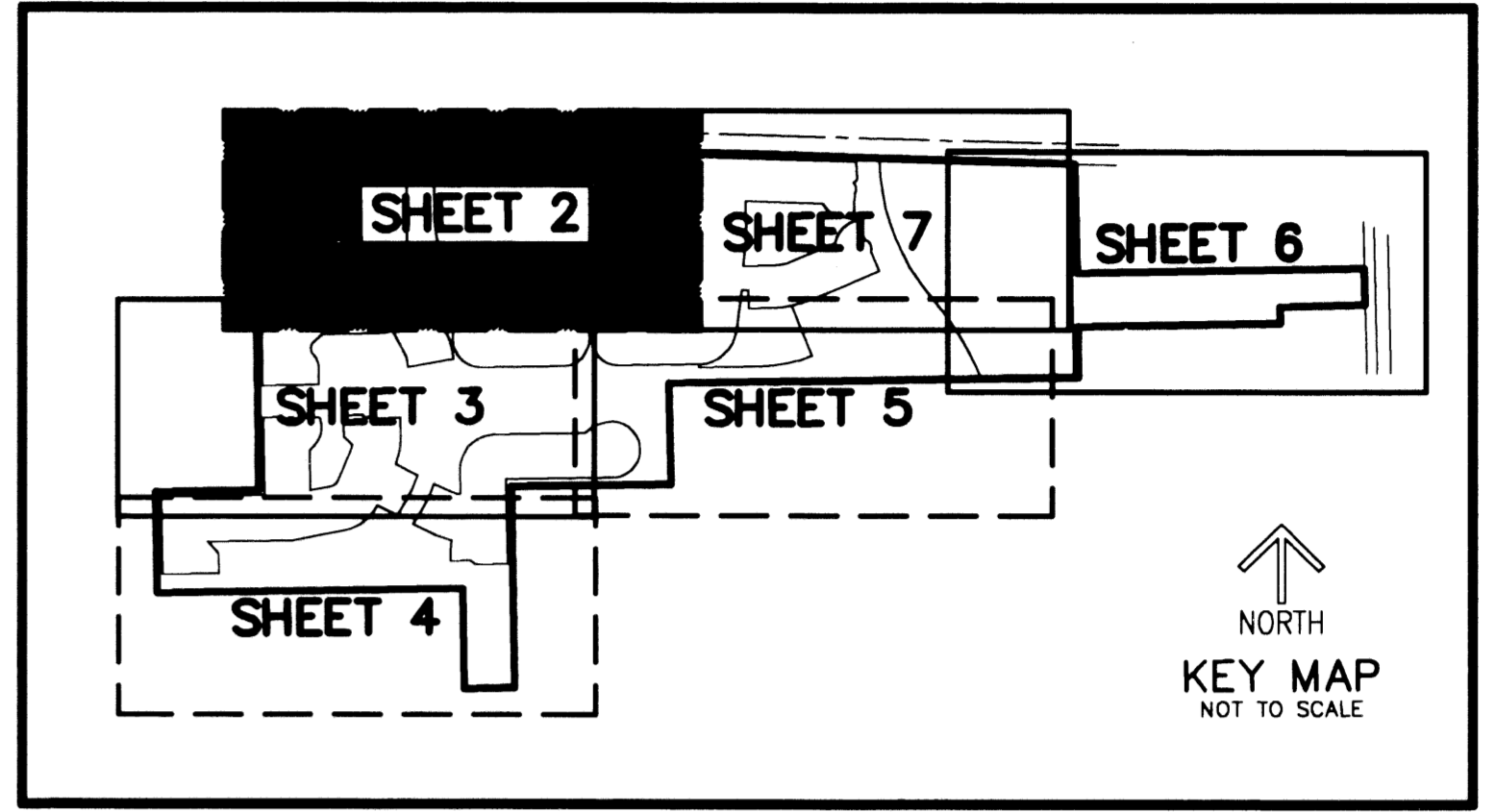
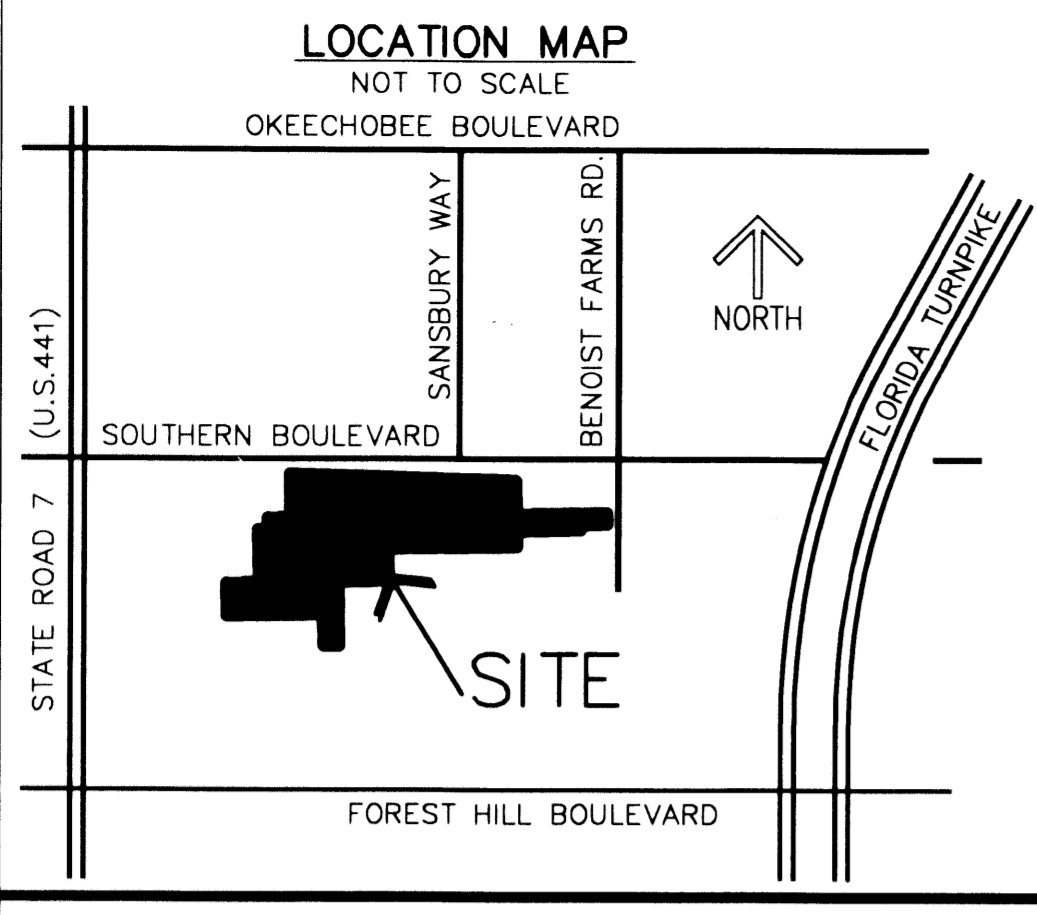
THIS INSTRUMENT PREPARED BY
DAVID P. LINDLEY
OF
CAULFIELD and WHEELER, INC.
SURVEYORS - ENGINEERS - PLANNERS
7301-A WEST PALMETTO PARK ROAD, SUITE 100A
BOCA RATON, FLORIDA 33433 - (561)392-1991
JUNE - 2002

NOTES COORDINATES, BEARINGS AND DISTANCES

COORDINATES SHOWN ARE GRID
DATUM = NAD 83 1990 ADJUSTMENT
ZONE = FLORIDA EAST
LINEAR UNIT = US SURVEY FEET
COORDINATE SYSTEM 1983 STATE PLANE
TRANSVERSE MERCATOR PROJECTION
ALL DISTANCES ARE GROUND
SCALE FACTOR = 1.00002175
GROUND DISTANCE X SCALE FACTOR = GRID DISTANCE
BEARINGS AS SHOWN HEREON ARE GRID DATUM, NAD 83 1990
ADJUSTMENT, FLORIDA EAST ZONE.

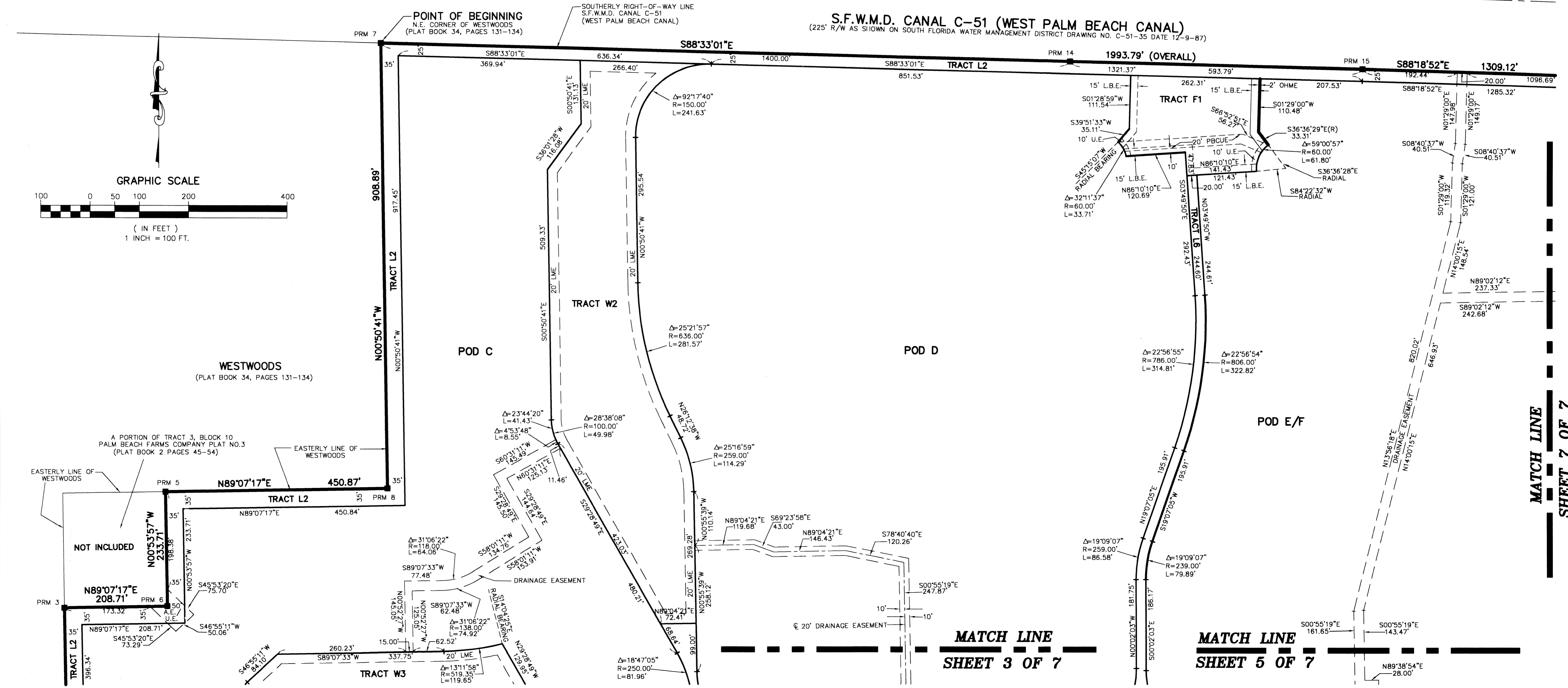
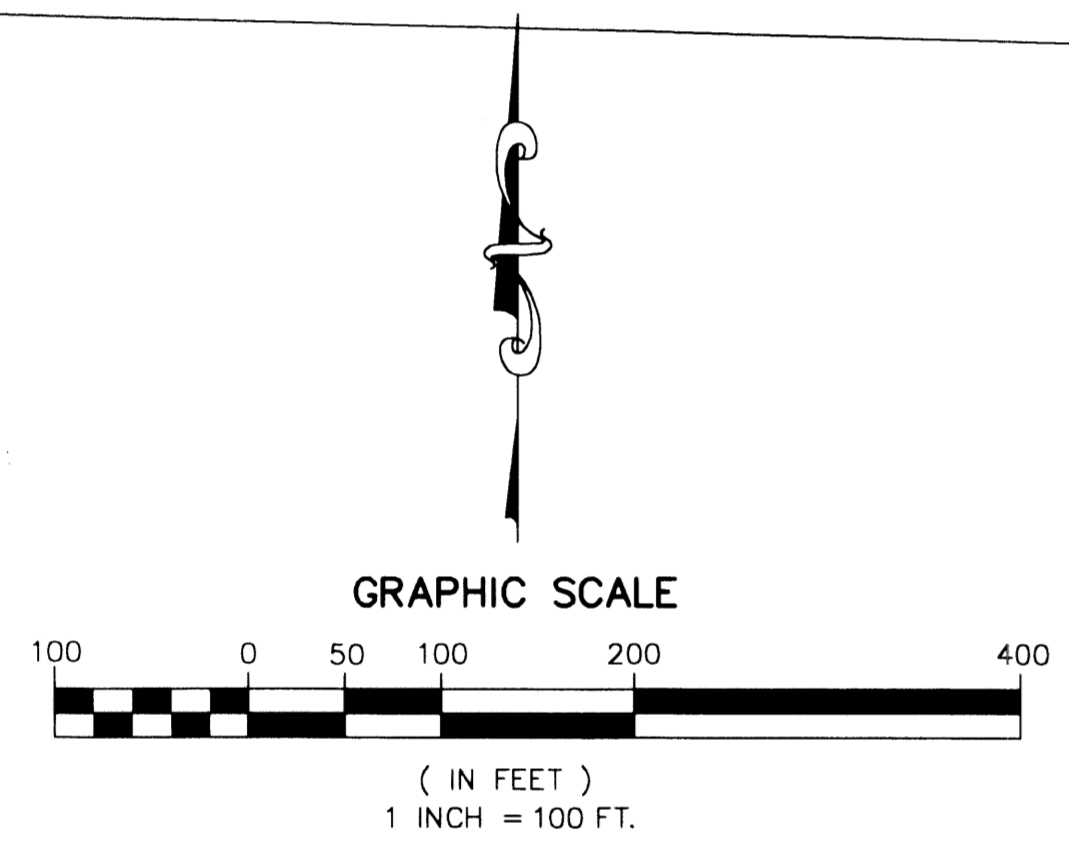
S88°18'52"E (PLAT BEARING) 00°04'41" = BEARING ROTATION
S88°23'33"E (GRID BEARING) COUNTER CLOCKWISE (PLAT TO GRID)
NORTH LINE THIS PLAT

CURVE NO.	CHORD BEARING	CHORD DISTANCE
C1	N44°05'36"E	1414.13'
C2	N58°11'01"E	1027.27'
C3	N13°11'14"E	486.90'
C4	N70°11'06"E	647.61'
C5	N19°43'30"W	987.86'
C6	N18°19'42"W	916.96'
C7	S37°09'44"E	74.59'
C8	S30°38'10"E	465.93'



SOUTHERN BOULEVARD (STATE ROAD 80)
NORTH LINE SECTION 6-44-42

S.F.W.M.D. CANAL C-51 (WEST PALM BEACH CANAL)
(225' R/W AS SHOWN ON SOUTH FLORIDA WATER MANAGEMENT DISTRICT DRAWING NO. C-51-35 DATE 12-9-87)



MATCH LINE
SHEET 7 OF 7

MATCH LINE
SHEET 3 OF 7

MATCH LINE
SHEET 5 OF 7

SUBDIVISION DIAMOND "C" RANCH
BOOK 99
PAGE 174
FLOOD ZONE AH
FLOOD MAP # 160A
ZONING PD
QUAD # 41
SE
TAZ 722, 1009
FUD NAME