

STATE OF FLORIDA
COUNTY OF PALM BEACH
THIS PLAT WAS FILED FOR
RECORD AT _____ M.
THIS _____ DAY OF _____
A.D. 2003 AND DULY RECORDED
IN PLAT BOOK _____ AND
PAGES _____ AND _____
DOROTHY H. WILKEN
CLERK CIRCUIT COURT

BY: _____
DEPUTY CLERK

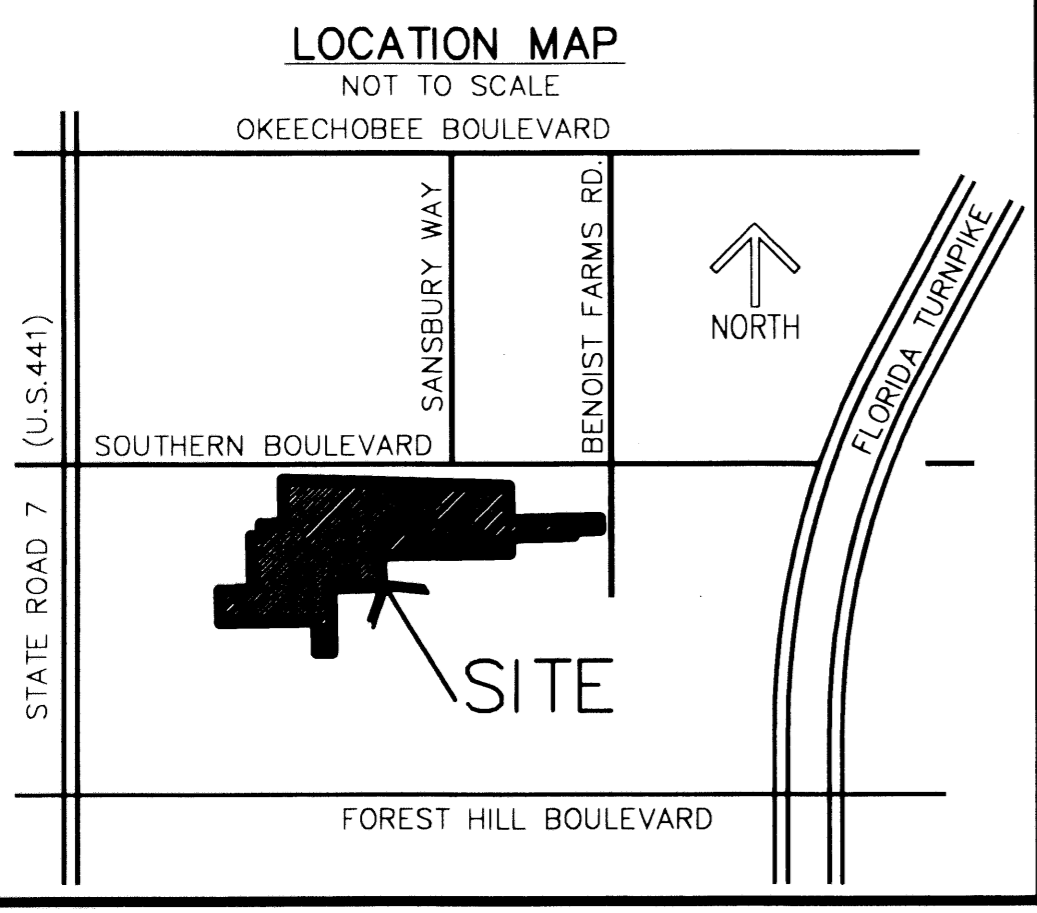
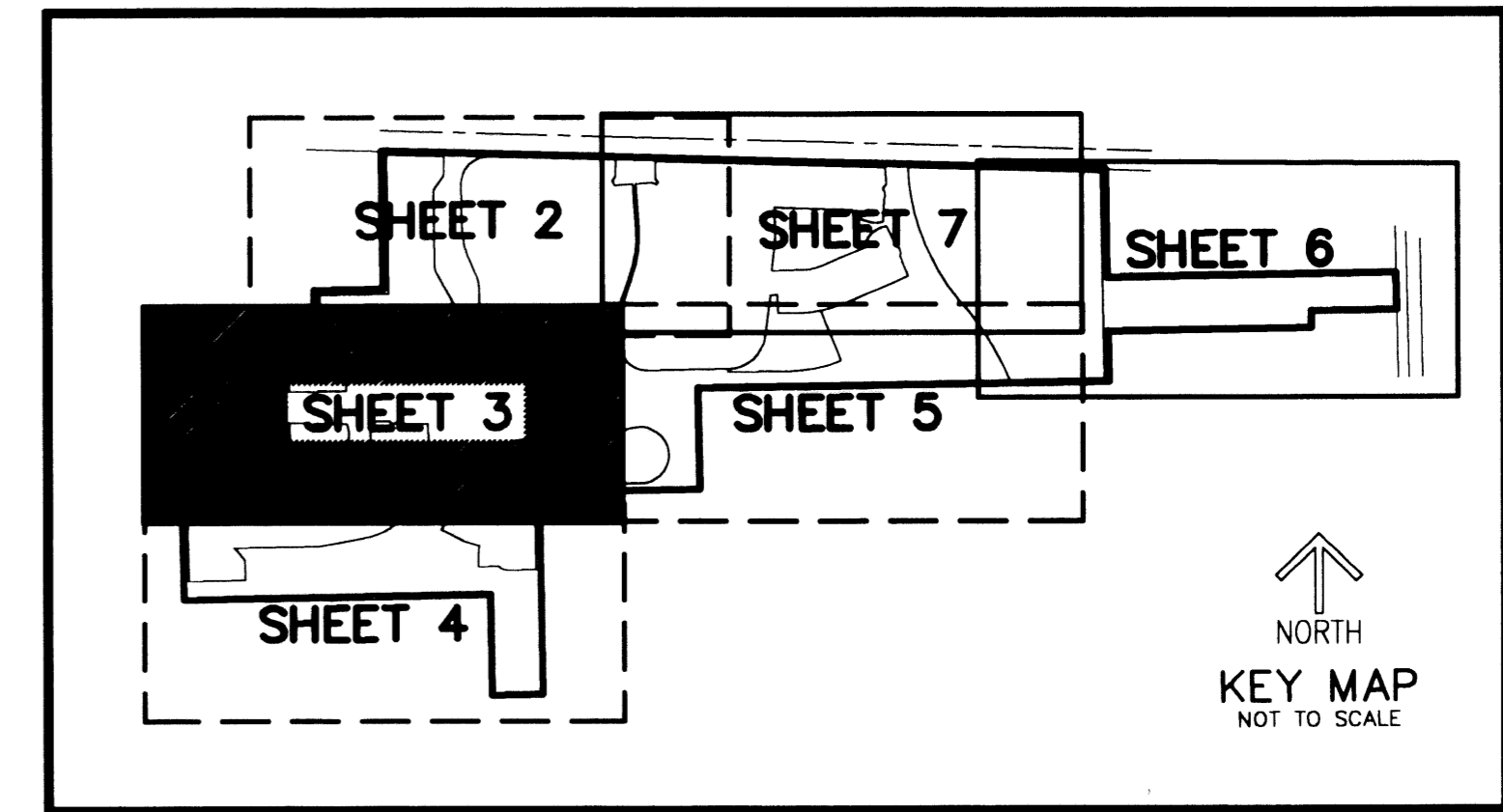
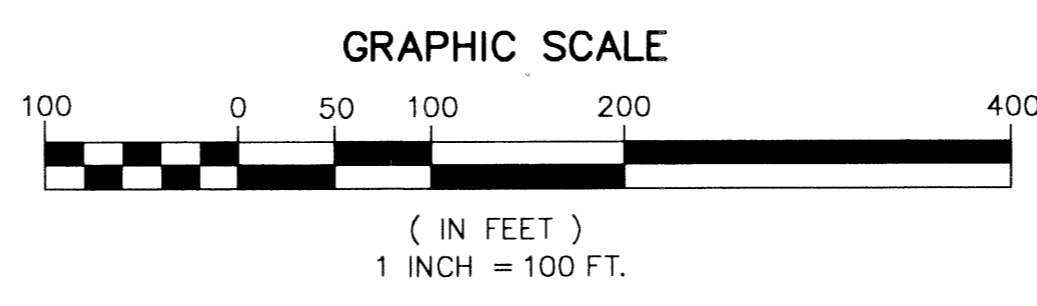
DIAMOND "C" RANCH

A PLANNED UNIT DEVELOPMENT, BEING A REPLAT OF ALL OF "PINELAND PARK", AS RECORDED IN PLAT BOOK 11, PAGE 62, AND
A REPLAT OF A PORTION OF BLOCKS 7, 8, 10 AND 11, "PALM BEACH FARMS COMPANY PLAT NO. 3, AS RECORDED IN PLAT BOOK 2, PAGES 45 THROUGH 54,
ALL OF THE PUBLIC RECORDS OF PALM BEACH COUNTY, FLORIDA, LYING IN SECTIONS 5 AND 6, TOWNSHIP 44 SOUTH, RANGE 42 EAST, PALM BEACH COUNTY, FLORIDA

THIS INSTRUMENT PREPARED BY
DAVID P. LINDLEY
OF
CAULFIELD and WHEELER, INC.
SURVEYORS - ENGINEERS - PLANNERS
7301-A WEST PALMETTO PARK ROAD, SUITE 100A
BOCA RATON, FLORIDA 33433 - (561)392-1991
JUNE - 2002

NOTES COORDINATES, BEARINGS AND DISTANCES

COORDINATES SHOWN ARE GRID
DATUM = NAD 83 1990 ADJUSTMENT
ZONE = FLORIDA EAST
LINEAR UNIT = US SURVEY FEET
COORDINATE SYSTEM 1983 STATE PLANE
TRANSVERSE MERCATOR PROJECTION
ALL DISTANCES ARE GROUND
SCALE FACTOR = 1.00002175
GROUND DISTANCE X SCALE FACTOR = GRID DISTANCE
BEARINGS AS SHOWN HEREON ARE GRID DATUM, NAD 83 1990
ADJUSTMENT, FLORIDA EAST ZONE.
S88°18'52"E (PLAT BEARING) 00°04'41" = BEARING ROTATION
S88°23'33"E (GRID BEARING) COUNTER CLOCKWISE (PLAT TO GRID)
NORTH LINE THIS PLAT



COORDINATE TABLE

P.R.M.#	NORTHING	EASTING
1	851141.23	917907.92
2	850466.16	917919.41
3	852278.68	918563.62
4	851152.33	918562.84
5	852515.85	918768.32
6	852282.17	918772.31
7	853432.17	919204.50
8	852523.38	919219.14
9	850489.64	919280.87
10	850500.56	919913.87
11	849840.63	919924.82
12	851181.17	920232.61
13	849846.32	920254.76
14	853398.66	920604.13
15	853384.44	921917.76
16	851874.31	921260.68
17	851199.35	921272.51
18	852271.11	925245.40
19	853347.72	922506.40
20	852381.11	925244.01
21	853346.42	922506.42
22	852390.80	925798.15
23	853344.91	922606.47
24	852635.65	925792.99
25	852385.64	922852.06
26	852448.08	922930.18
27	852627.26	925319.23
28	852275.34	922940.23
29	852337.78	923018.34
30	851905.11	923163.26
31	851918.04	923266.42
32	851906.86	923271.06
33	853308.40	923907.36
34	852602.44	923919.42
35	852247.49	923925.58
36	851917.55	923931.42
37	851891.14	922300.29

CURVE TABLE

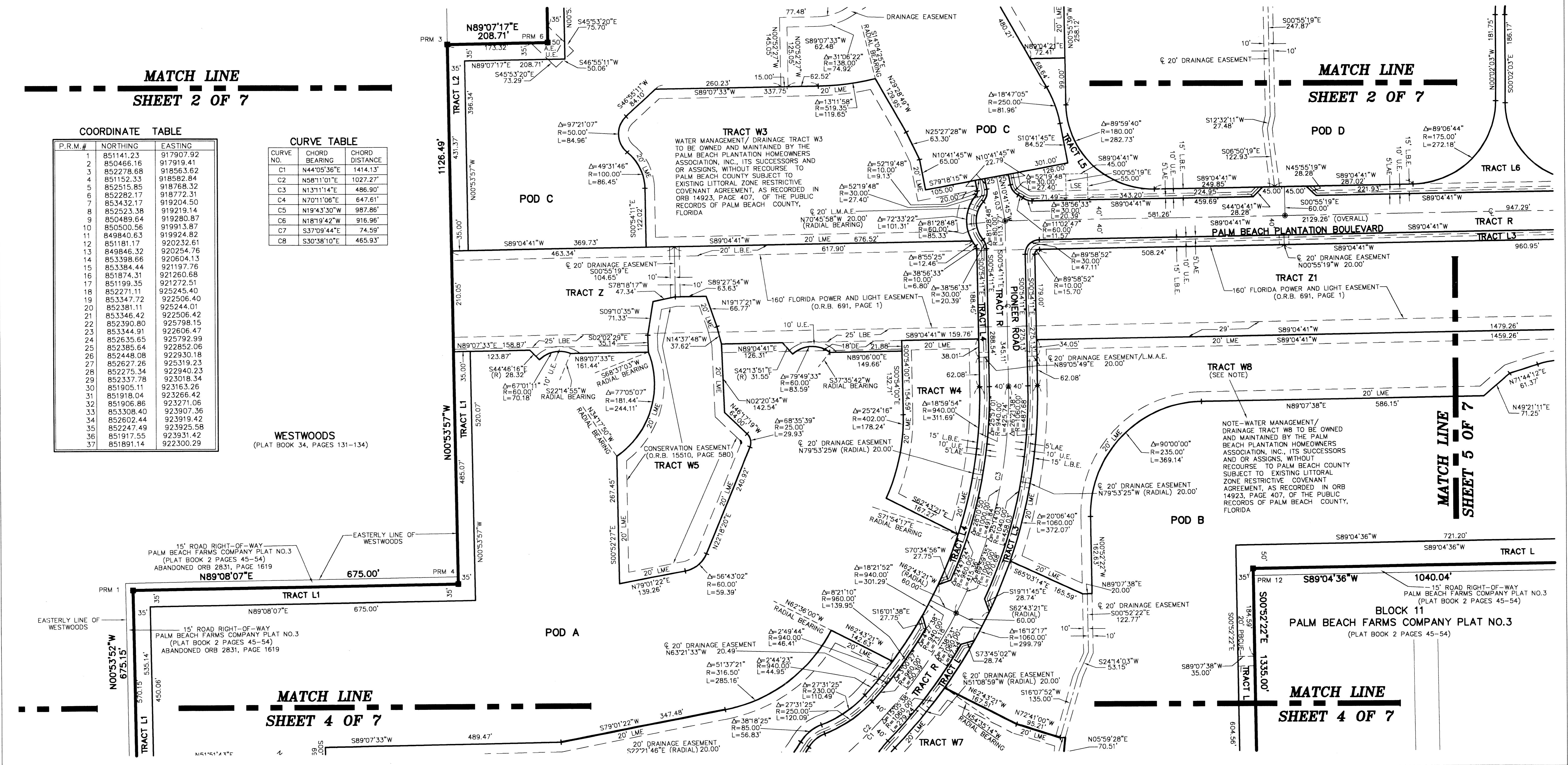
CURVE NO.	CHORD BEARING	CHORD DISTANCE
C1	N44°05'36"E	1414.13'
C2	N58°11'01"E	1027.27'
C3	N13°11'14"E	486.90'
C4	N70°11'06"E	647.61'
C5	N19°43'30"W	987.86'
C6	N18°19'42"W	916.96'
C7	S37°09'44"E	74.59'
C8	S30°38'10"E	465.93'

WESTWOODS
(PLAT BOOK 34, PAGES 131-134)

15' ROAD RIGHT-OF-WAY
PALM BEACH FARMS COMPANY PLAT NO.3
(PLAT BOOK 2 PAGES 45-54)
ABANDONED ORB 2831, PAGE 1619

15' ROAD RIGHT-OF-WAY
PALM BEACH FARMS COMPANY PLAT NO.3
(PLAT BOOK 2 PAGES 45-54)
ABANDONED ORB 2831, PAGE 1619

NOTE-WATER MANAGEMENT/
DRAINAGE TRACT W6 TO BE OWNED
AND MAINTAINED BY THE PALM
BEACH PLANTATION HOMEOWNERS
ASSOCIATION, INC., ITS SUCCESSORS
AND OR ASSIGNS, WITHOUT
RECOURSE TO PALM BEACH COUNTY
SUBJECT TO EXISTING LITTORAL
ZONE RESTRICTIVE COVENANT
AGREEMENT, AS RECORDED IN ORB
14923, PAGE 407, OF THE PUBLIC
RECORDS OF PALM BEACH COUNTY,
FLORIDA



SUBDIVISION DIAMOND "C" RANCH
BOOK 99
FLOOD ZONE 4H
QUAD # 47
SE TAZ 753, 1009
PUD NAME

MATCH LINE
SHEET 2 OF 7

MATCH LINE
SHEET 2 OF 7

MATCH LINE
SHEET 4 OF 7

MATCH LINE
SHEET 4 OF 7

MATCH LINE
SHEET 5 OF 7