

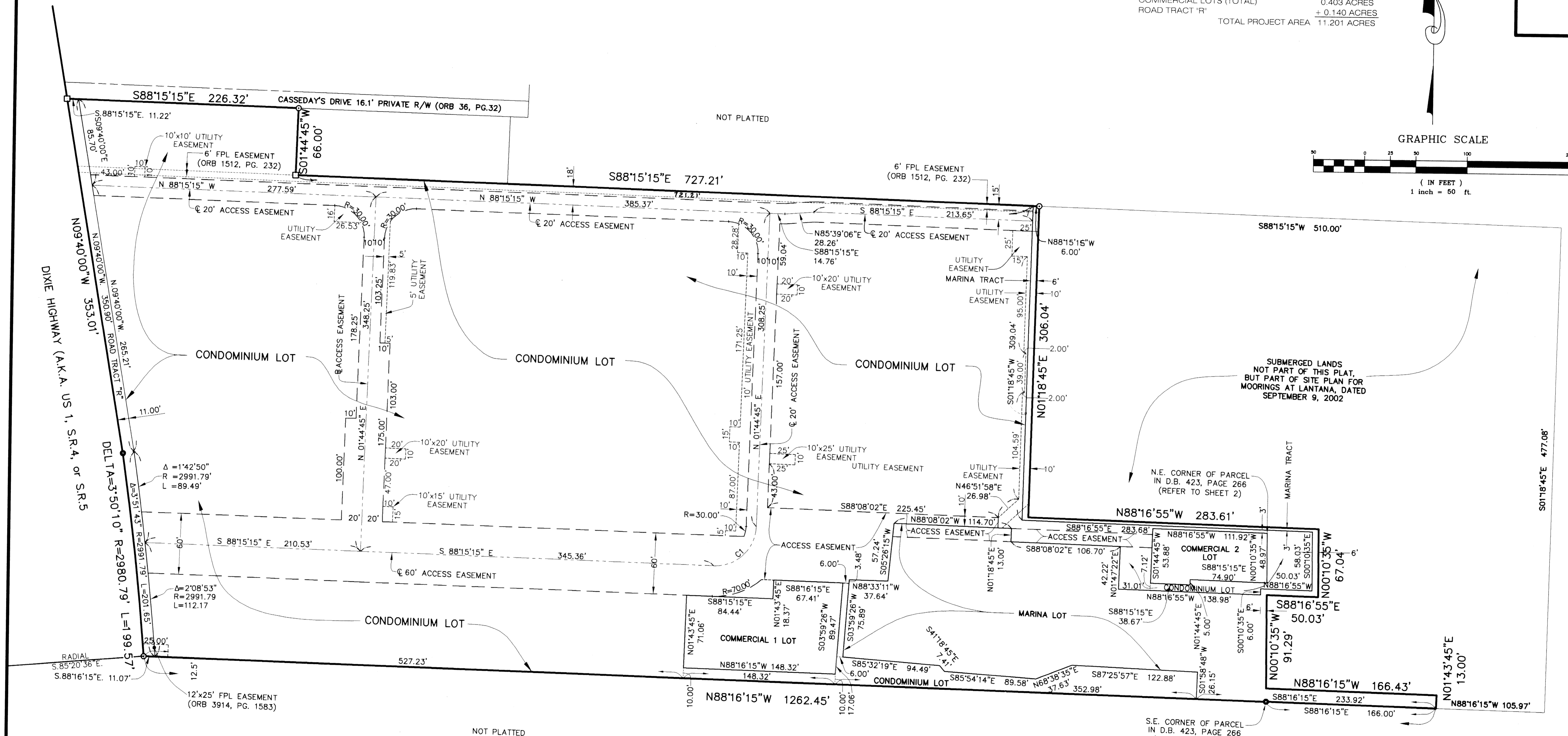
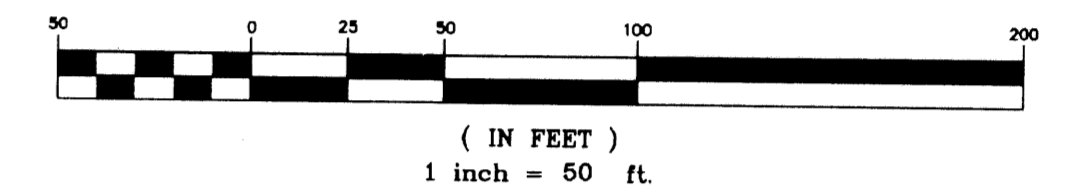
# Moorings at Lantana

184

### TABULAR DATA

CONDOMINIUM LOT	9.474 ACRES
MARINA LOT	1.184 ACRES
COMMERCIAL 1 LOT	0.272 ACRES
COMMERCIAL 2 LOT	+ 0.131 ACRES
COMMERCIAL LOTS (TOTAL)	0.403 ACRES
ROAD TRACT 'R'	+ 0.140 ACRES
<b>TOTAL PROJECT AREA</b>	<b>11.201 ACRES</b>

### GRAPHIC SCALE



CURVE	CENTRAL ANGLE	RADIUS	LENGTH	CHORD BEARING	CHORD DISTANCE
C1	90°00'00"	40.00	62.83	N46°44'45"E	56.57

### LAND SURVEYORS NOTES

- P.R.M. - PERMANENT REFERENCE MONUMENT
- R - RADIUS
- L - LENGTH OF ARC
- Δ - CENTRAL ANGLE
- BL - BASE LINE
- CL - CENTER LINE
- SET 4"x4" CONCRETE MONUMENT STAMPED "P.R.M."
- SET MAG NAIL AND DISK STAMPED "P.R.M."
- SET 1" IRON PIPE AND CAP IN CONCRETE

P.R.M.'S ALONG LAKE BOUNDARY FELL INTO LAKE, AND WERE NOT SET EXCEPT FOR OFFSETS SHOWN HEREON.  
 THE DIMENSIONS SHOWN BETWEEN TRACTS AND BOUNDARIES ARE AT RIGHT ANGLES (90°), UNLESS OTHERWISE SHOWN.  
 ALL ANGLES ALONG EASEMENT LINES ARE AT RIGHT ANGLES (90°) UNLESS OTHERWISE SHOWN.

S.E. CORNER OF PARCEL IN D.B. 423, PAGE 266 (REFER TO SHEET 2)

THIS INSTRUMENT WAS PREPARED BY:  
 DENNIS PAINTER, R.L.S.  
 3461 FAIRLANE FARMS ROAD  
 WELLINGTON, FLORIDA 33414  
 561-383-7480

### SHEET INDEX

DEDICATIONS AND APPROVALS	SHEET 1
BOUNDARY SURVEY	SHEET 2
TRACT BOUNDARIES	SHEET 3

		<b>RECORD PLAT</b> <b>MOORINGS AT</b> <b>LANTANA</b>	
Dr. db	Date: JULY 2003	FP 1887D	SHEET 3 OF 3
Ck. dp	Job. No. 97022K		

H:\PROJECTS\97022K\MOORINGS AT LANTANA\DWG\PLAT.DWG 7/20/03 4:37:54 PM