



CARNAHAN · PROCTOR · CROSS, INC.

CONSULTING ENGINEERS · SURVEYORS · PLANNERS

6101 WEST ATLANTIC BOULEVARD, MARGATE, FLORIDA 33063
PHONE: 954-972-3959 FAX: 954-972-4178

APRIL 2003

030304

JSH

LEGENDS OF THE GARDENS

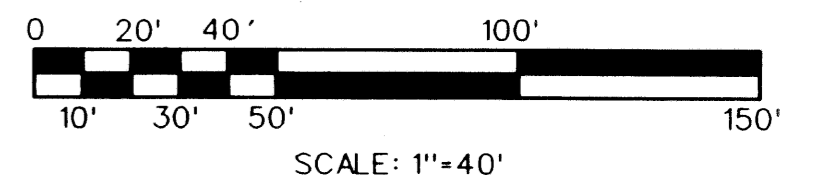
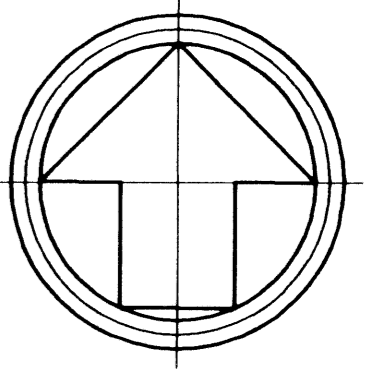
A PORTION OF THE NORTHWEST ONE-QUARTER OF SECTION 25, TOWNSHIP 41
SOUTH, RANGE 42 EAST, CITY OF PALM BEACH GARDENS, PALM BEACH COUNTY, FLORIDA

193

STATE OF FLORIDA
COUNTY OF PALM BEACH
THIS PLAT WAS FILED FOR
RECORD AT _____
THIS _____ DAY OF _____
200____, AND DULY RECORDED
IN PLAT BOOK _____ ON PAGES
_____ THROUGH _____
DOROTHY H. WILKEN, CLERK

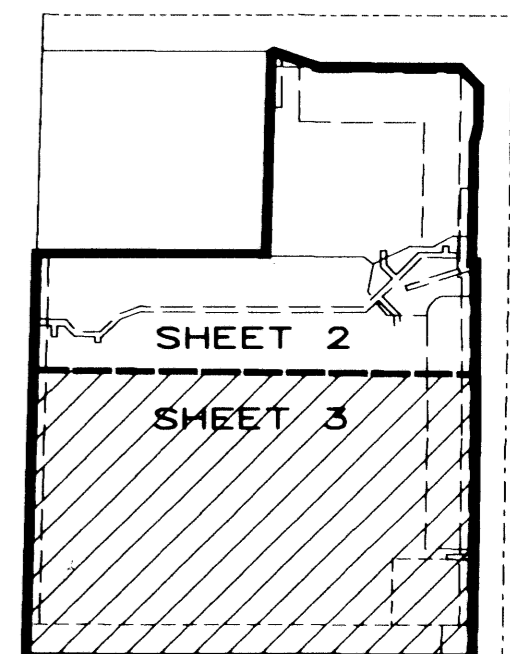
BY: _____ DC

SHEET 3 OF 3

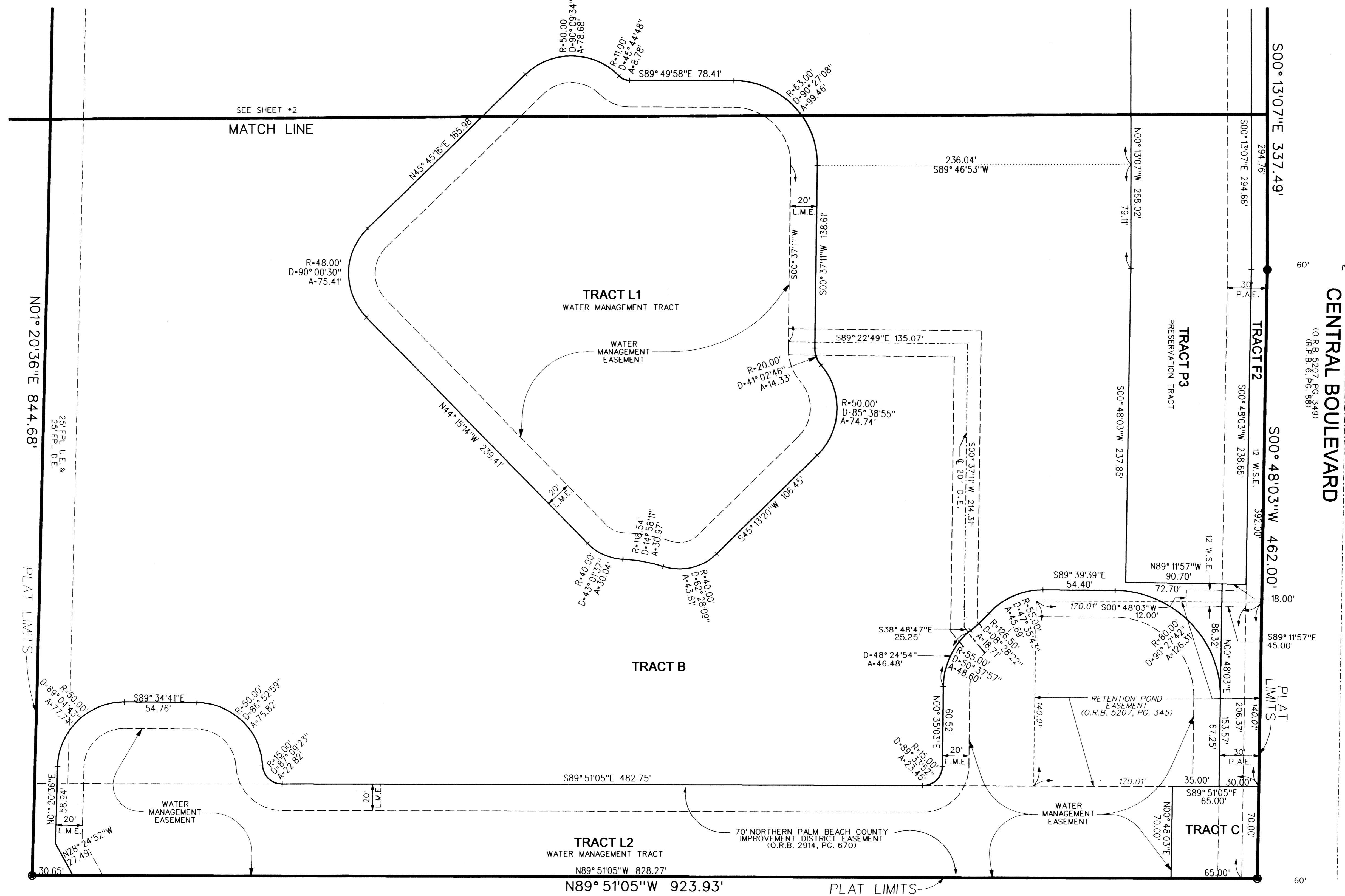


LEGEND:

- SET PERMANENT REFERENCE MONUMENT (P.R.M.) - LB2936 UNLESS OTHERWISE NOTED
- CENTERLINE
- Δ DELTA (CENTRAL ANGLE)
- D.B. DEED BOOK
- D.E. DRAINAGE EASEMENT
- FPL FLORIDA POWER & LIGHT COMPANY
- L.M.E. LAKE MAINTENANCE EASEMENT
- LSE LIFT STATION EASEMENT
- NPBCID NORTHERN PALM BEACH COUNTY IMPROVEMENT DISTRICT
- O.R.B. OFFICIAL RECORDS BOOK
- P.A.E. PEDESTRIAN ACCESS EASEMENT
- PG. PAGE
- P.B. PLAT BOOK
- P.B.C.R. PALM BEACH COUNTY RECORDS
- R. RADIUS
- R.P.B. ROAD PLAT BOOK
- U.E. UTILITY EASEMENT
- W.S.E. WATER AND SEWER EASEMENT



KEY MAP
NOT TO SCALE



UNPLATTED
PORTION OF
SECTION 25-41-42

UNPLATTED
PORTION OF
SECTION 25-41-42

FILE: s:\030304\0303030303030303.dgn
DATE: 23-Aug-03 10:19