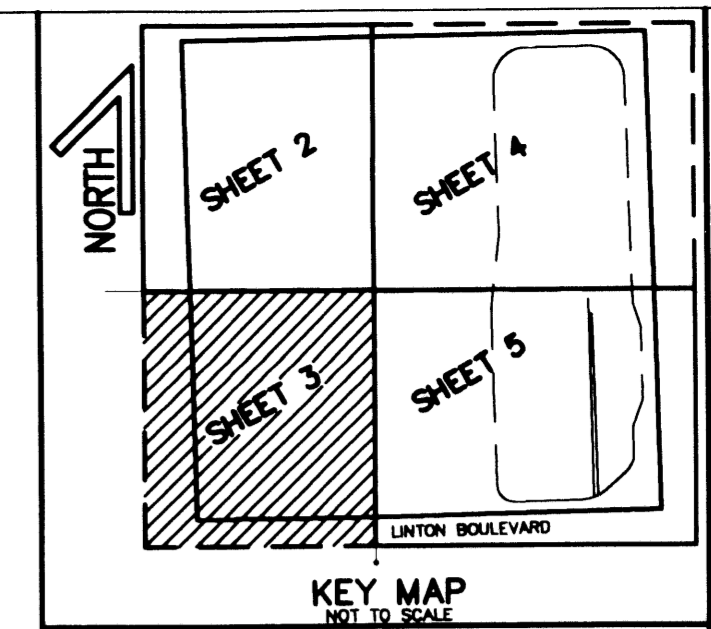


DELRAY OUTPATIENT PROPERTIES PLAT

A REPLAT OF PARCEL 2, "DELRAY TOWN CENTER", ACCORDING TO THE PLAT THEREOF, AS RECORDED IN PLAT BOOK 65, PAGES 189 AND 190 OF THE PUBLIC RECORDS OF PALM BEACH COUNTY, FLORIDA. SAID LANDS LYING IN SECTION 24, TOWNSHIP 46 SOUTH, RANGE 42 EAST, CITY OF DELRAY BEACH, PALM BEACH COUNTY FLORIDA.



199

STATE OF FLORIDA
 COUNTY OF PALM BEACH
 THIS PLAT WAS FILED FOR
 RECORD AT _____ M.
 THIS _____ DAY OF _____
 A.D. 2003 AND DULY RECORDED
 IN PLAT BOOK _____ ON
 PAGES _____ THRU _____

DOROTHY H. WILKEN
 CLERK CIRCUIT COURT

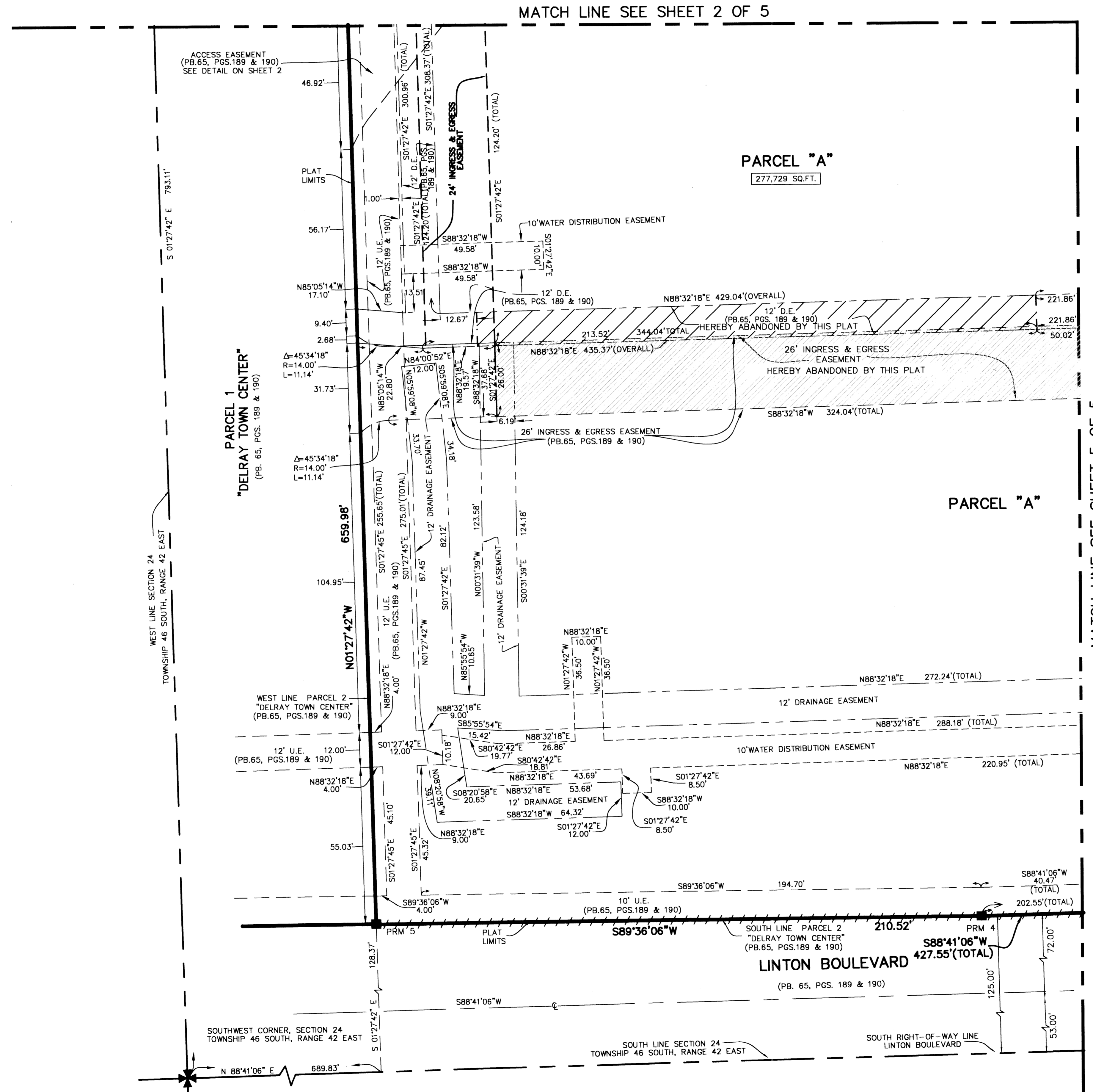
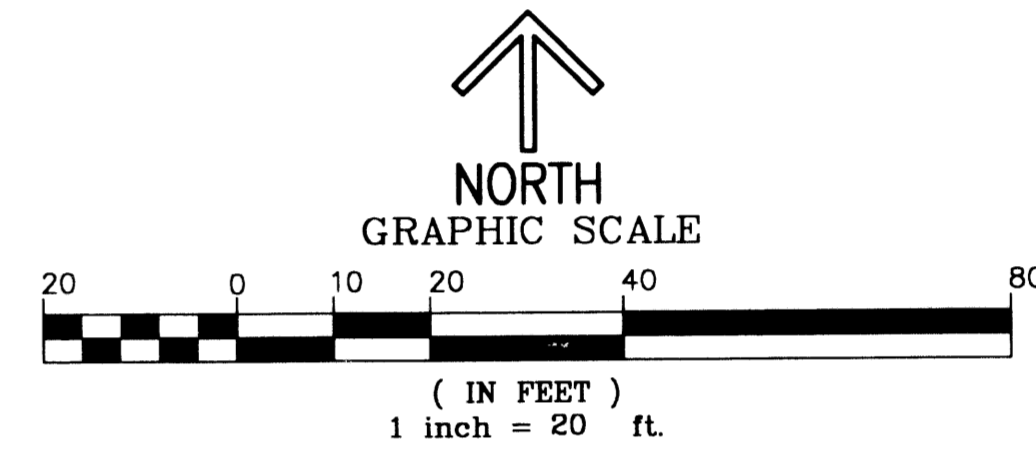
BY: _____
 DEPUTY CLERK

SHEET 3 OF 5

TABULAR DATA

PARCEL	SQUARE FEET	ACRES
PARCEL "A"	277,729	6.376
PARCEL "B"	143,747	3.300
TOTAL AREA	421,476	9.676

THIS INSTRUMENT PREPARED BY
 DAVID P. LINDLEY
 OF
CAULFIELD and WHEELER, INC.
 SURVEYORS - ENGINEERS - PLANNERS
 7301-A WEST PALMETTO PARK ROAD, SUITE 100A
 BOCA RATON, FLORIDA 33433 - (561)392-1991
 JANUARY - 2002



MATCH LINE SEE SHEET 2 OF 5

MATCH LINE SEE SHEET 5 OF 5