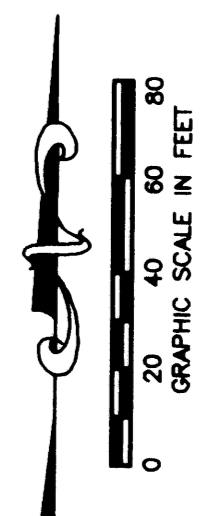


MIRASOL PARCEL TWENTY-THREE

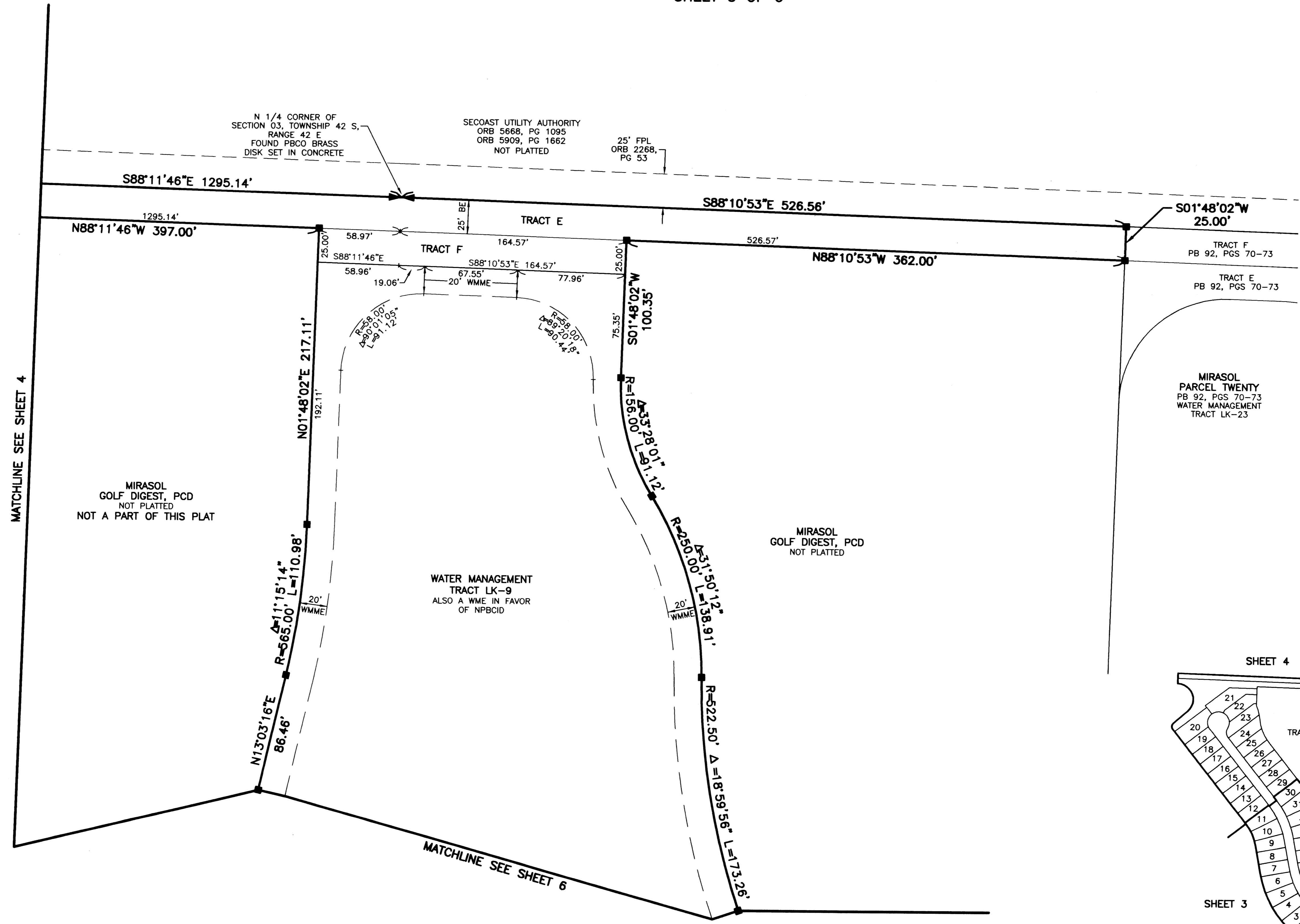
PART OF GOLF DIGEST P.C.D.
BEING IN SECTION 03, TOWNSHIP 42 SOUTH, RANGE 42 EAST,
CITY OF PALM BEACH GARDENS,
PALM BEACH COUNTY, FLORIDA
SHEET 5 OF 6

5

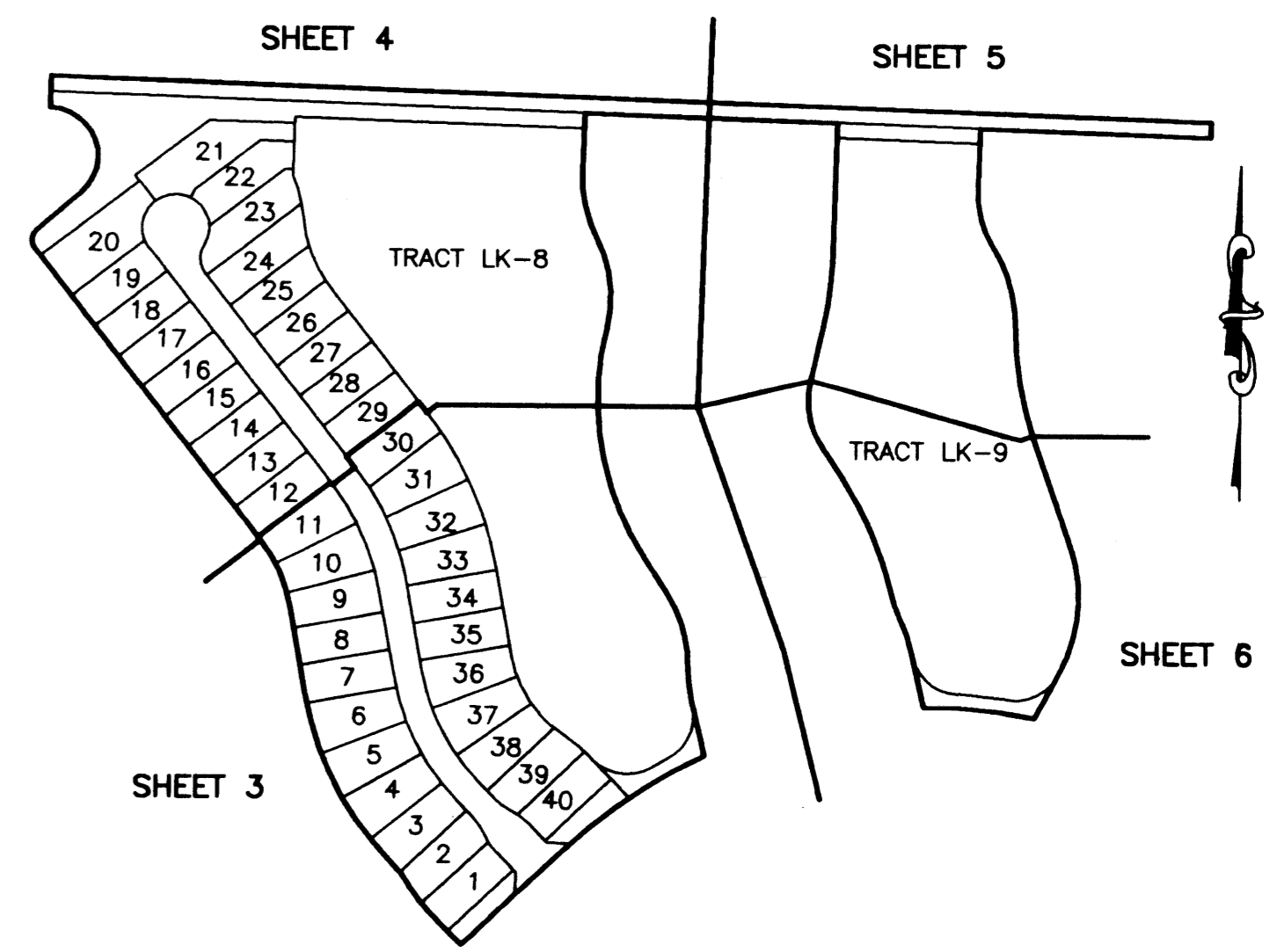
STATE OF FLORIDA
COUNTY OF PALM BEACH
THIS PLAT WAS FILED FOR
RECORD _____ DAY OF _____
AD, 2003 AND DULY RECORDED
IN PLAT BOOK _____ ON PAGES
_____ THROUGH _____
DOROTHY H. WILKEN, CLERK
BY: _____, D.C.



CIRCUIT COURT SEAL



- LEGEND**
- Δ CENTRAL (DELTA) ANGLE
 - CH CHORD
 - BE BUFFER EASEMENT
 - IEE INGRESS-EGRESS EASEMENT
 - L ARC LENGTH
 - NPBCID NORTHERN PALM BEACH COUNTY IMPROVEMENT DISTRICT
 - PAE PEDESTRIAN ACCESS EASEMENT
 - PB PLAT BOOK
 - PG PAGE
 - PCD PLANNED COMMUNITY DEVELOPMENT
 - R RADIUS
 - UE UTILITY EASEMENT
 - WLE WATER LINE EASEMENT
 - WMAE WATER MANAGEMENT ACCESS EASEMENT
 - WME WATER MANAGEMENT EASEMENT
 - WMME WATER MANAGEMENT MAINTENANCE EASEMENT
 - PERMANENT REFERENCE MONUMENT FOUND LB 048 (4" x 4" CONCRETE)
 - PERMANENT REFERENCE MONUMENT SET LB 048 (4" x 4" CONCRETE)
 - PERMANENT CONTROL POINT SET LB 048
 - CENTERLINE
 - ⊥ 1/4 SECTION CORNER



SHEET LOCATION MAP
NOT TO SCALE

THIS INSTRUMENT WAS PREPARED BY MARY HANNA CLODFELTER, P.S.M. IN THE OFFICES OF MOCK, ROOS & ASSOCIATES, INC., 5720 CORPORATE WAY, WEST PALM BEACH, FLORIDA 33407.

SHEET 5 OF 6

SCALE: 1"=40'	FLORIDA L.B. NO. 48
P.A. NO.: 99376.00	
DATE: MARCH 2003	
DRAWING NO.: 42-42-03-105	
5720 Corporate Way, West Palm Beach, Florida 33407 (561) 683-3113, Fax 478-7248	

MIRASOL PARCEL TWENTY-THREE
PART OF GOLF DIGEST P.C.D.
BEING IN SECTION 03,
TOWNSHIP 42 SOUTH, RANGE 42 EAST,
CITY OF PALM BEACH GARDENS,
PALM BEACH COUNTY, FLORIDA

S:\toy\toy\pac23\pac23.dwg, pa23rp02.dwg 7/23/2003 2:35:46 PM EDT

REV.: 07-23-03
CAD FILE:
TAYLPA23\PA23RP02