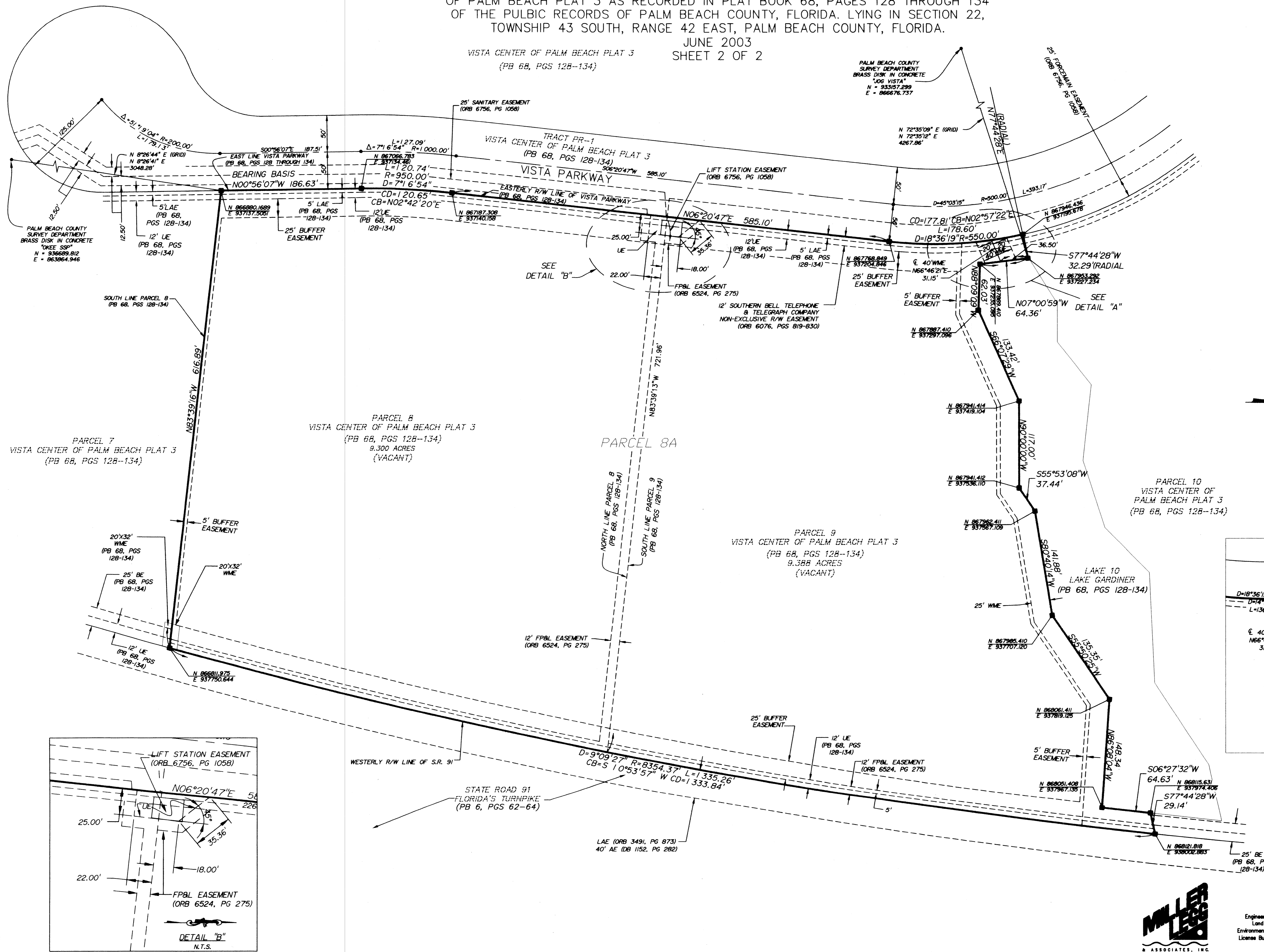


CONTRACTORS BUSINESS PARK - VISTA CENTER

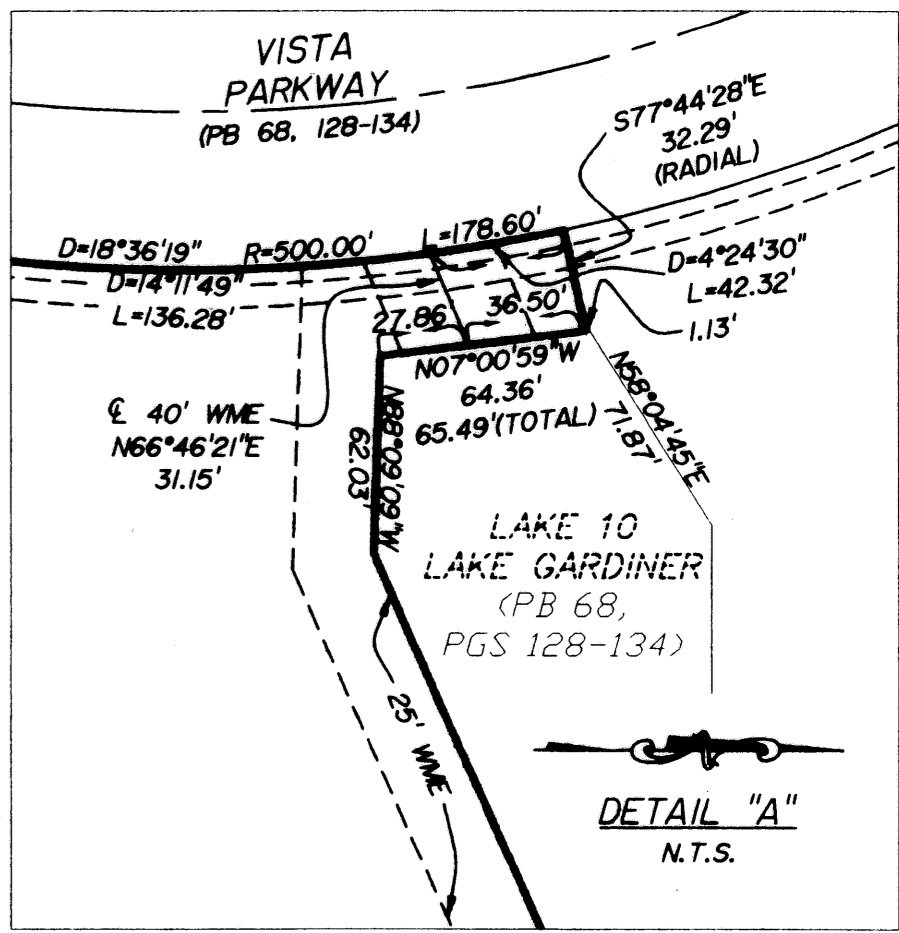
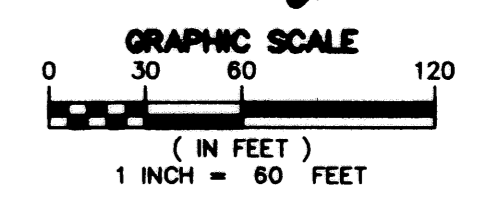
A PLANNED INDUSTRIAL PARK DEVELOPMENT
BEING A REPLAT OF ALL OF PARCELS 8 AND 9, AS SHOWN ON VISTA CENTER
OF PALM BEACH PLAT 3 AS RECORDED IN PLAT BOOK 68, PAGES 128 THROUGH 134
OF THE PUBLIC RECORDS OF PALM BEACH COUNTY, FLORIDA. LYING IN SECTION 22,
TOWNSHIP 43 SOUTH, RANGE 42 EAST, PALM BEACH COUNTY, FLORIDA.

JUNE 2003
SHEET 2 OF 2

VISTA CENTER OF PALM BEACH PLAT 3
(PB 68, PGS 128-134)



- LEGEND:**
- A = ARC (LENGTH OF CURVE)
 - AE = ACCESS EASEMENT
 - BE = BUFFER EASEMENT
 - D = CENTRAL ANGLE OF CURVE
 - CB = CURVE BEARING
 - CD = CURVE DISTANCE
 - DB = DEED BOOK
 - FP&L = FLORIDA POWER AND LIGHT
 - LB = LICENSED BUSINESS
 - LAE = LIMITED ACCESS EASEMENT
 - ORB = OFFICIAL RECORD BOOK
 - PB = PLAT BOOK
 - PG(S) = PAGE(S)
 - PSM = PROFESSIONAL SURVEYOR AND MAPPER
 - R = RADIUS OF CURVE
 - R/W = RIGHT OF WAY
 - SEC = SECTION
 - UE = UTILITY EASEMENT
 - WME = WATER MANAGEMENT EASEMENT
 - ⊙ = CENTERLINE
 - = PERMANENT REFERENCE MONUMENT
 - = PERMANENT CONTROL POINT



SHEET INDEX:

SHEET 1 TITLE PAGE
SHEET 2 PLAT MAP

SUBDIVISION CONTRACTORS BUSINESS PARK -
BOOK 00 PAGE 19
FLOOD ZONE AO
QUAD # 21 ZONING F1PD
SE 24, 1/2 ZIP CODE 33441
TAX 2003
FUDNAME Vista Center of Palm Beach



Engineers - Planners
Land Surveyors
Environmental Professionals
License Business No. 6680

1300 Corporate Center Way
Suite 201
Wellington
Florida 33414-8593
(561) 796-9861
Fax: (561) 796-9408