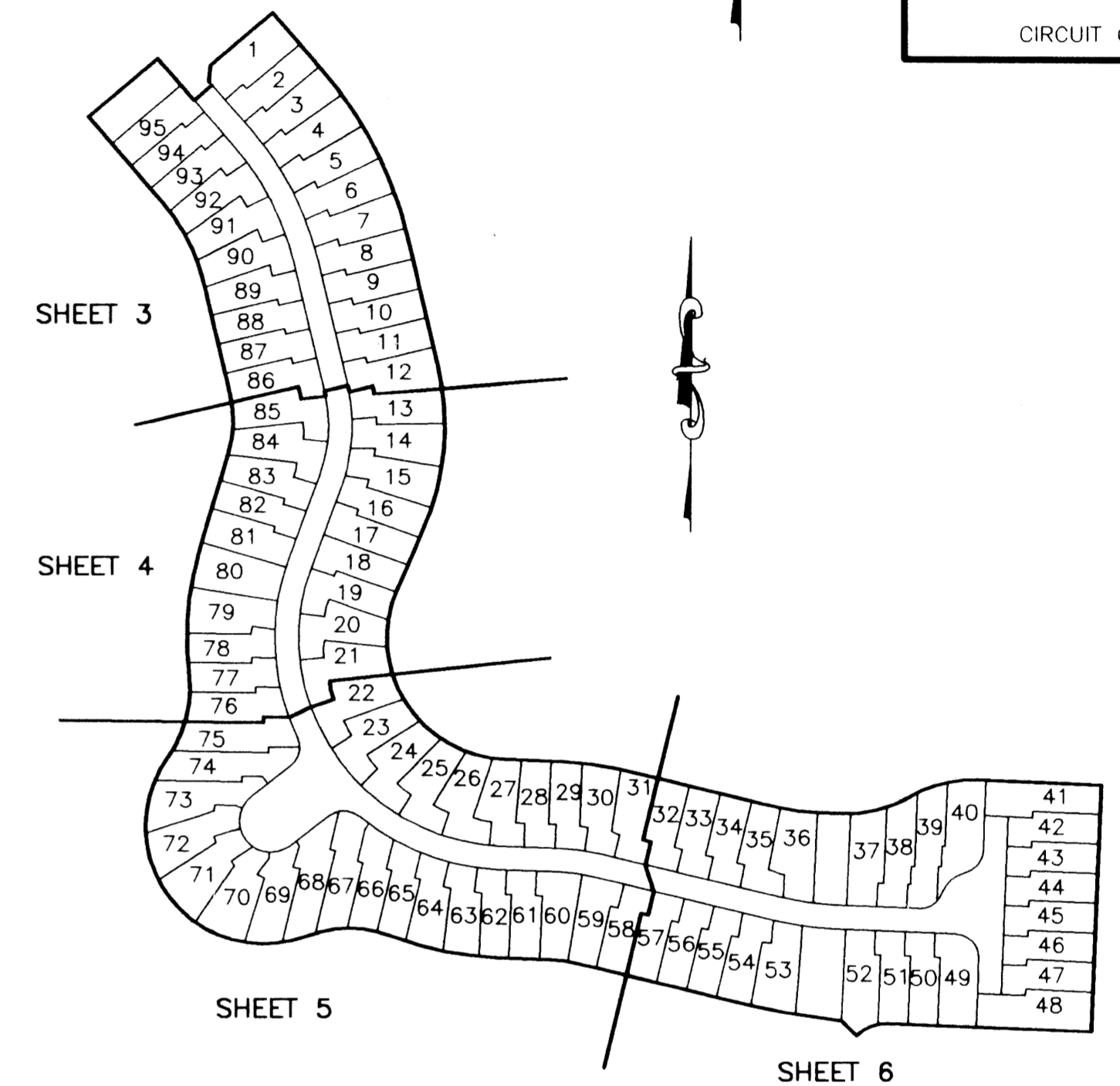
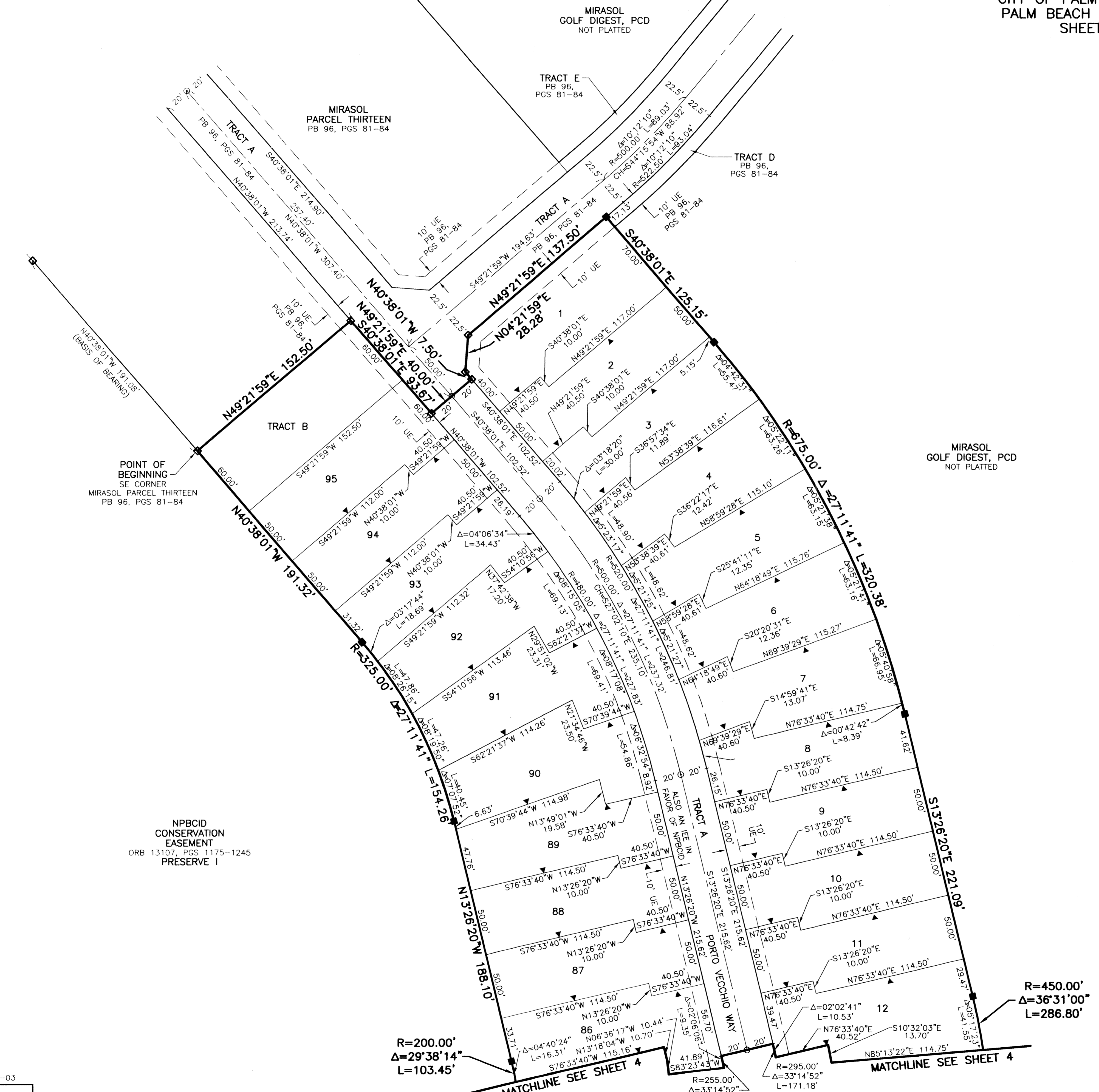


MIRASOL PARCEL FOURTEEN

PART OF GOLF DIGEST P.C.D.
BEING IN SECTIONS 03 AND 04, TOWNSHIP 42 SOUTH, RANGE 42 EAST,
CITY OF PALM BEACH GARDENS,
PALM BEACH COUNTY, FLORIDA
SHEET 3 OF 6

44

STATE OF FLORIDA
COUNTY OF PALM BEACH
THIS PLAT WAS FILED FOR
RECORD _____ DAY OF _____
AD, 2003 AND DULY RECORDED
IN PLAT BOOK _____ ON PAGES
_____ AND _____
DOROTHY H. WILKEN, CLERK
BY: _____ D.C.
CIRCUIT COURT SEAL



- LEGEND**
- Δ CENTRAL (DELTA) ANGLE
 - CH CHORD
 - OPE CART PATH EASEMENT
 - DE DRAINAGE EASEMENT
 - IEE INGRESS-EGRESS EASEMENT
 - L ARC LENGTH
 - LME LAKE MAINTENANCE EASEMENT
 - NPBCID NORTHERN PALM BEACH COUNTY IMPROVEMENT DISTRICT
 - ORB OFFICIAL RECORD BOOK
 - PAE PEDESTRIAN ACCESS EASEMENT
 - PB PLAT BOOK
 - PG PAGE
 - PCD PLANNED COMMUNITY DEVELOPMENT
 - R RADIUS
 - UE UTILITY EASEMENT
 - WLE WATER LINE EASEMENT
 - WME WATER MANAGEMENT EASEMENT
 - PM PERMANENT REFERENCE MONUMENT FOUND LB 048 (4" x 4" CONCRETE)
 - PR PERMANENT REFERENCE MONUMENT SET LB 048 (4" x 4" CONCRETE)
 - PC PERMANENT CONTROL POINT SET LB 048
 - CL CENTERLINE
 - ZLI ZERO LOT LINE INDICATOR

THIS INSTRUMENT WAS PREPARED BY MARY HANNA CLODFELTER, P.S.M. IN THE OFFICES OF MOCK, ROOS & ASSOCIATES, INC., 5720 CORPORATE WAY, WEST PALM BEACH, FLORIDA 33407.

SCALE: 1"=40'	FLORIDA L.B. NO. 48
P.A. NO.: 99375.00	MOCK • ROOS ENGINEERS • SURVEYORS • PLANNERS
DATE: FEBRUARY 2003	
DRAWING NO. 42-42-03-102	
5720 Corporate Way, West Palm Beach, Florida 33407 (561) 683-3113, fax 478-7248	
<p>MIRASOL PARCEL FOURTEEN PART OF GOLF DIGEST P.C.D. BEING IN SECTIONS 03 AND 04, TOWNSHIP 42 SOUTH, RANGE 42 EAST, CITY OF PALM BEACH GARDENS, PALM BEACH COUNTY, FLORIDA</p>	

REV.: 06-06-03
CAD FILE:
TAYLPA14\PA14RPO2