

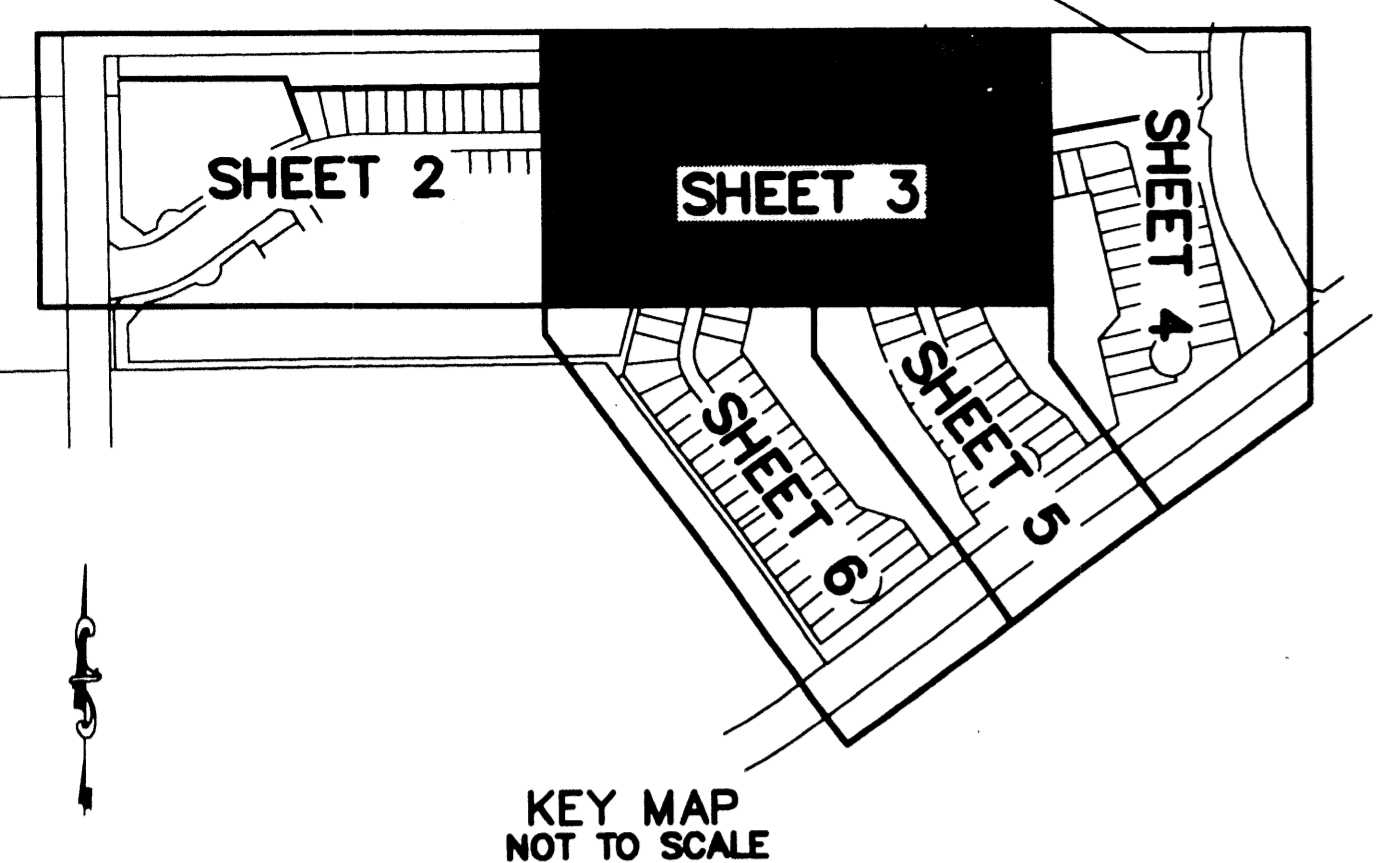
# VILLAGES OF WINDSOR PARCEL E - PHASE II PLAT

# 51

A PLANNED UNIT DEVELOPMENT BEING A PART OF VILLAGES OF WINDSOR PUD BEING A REPLAT OF A PORTION OF BLOCKS 37 AND 42, "PALM BEACH FARMS COMPANY PLAT NO. 3 AS RECORDED IN PLAT BOOK 2, PAGES 45 THROUGH 54, TOGETHER WITH A PORTION OF HYPOLUXO ROAD, AS ABANDONED BY OFFICIAL RECORD BOOK 3123, PAGES 1646 THROUGH 1652, TOGETHER WITH A REPLAT OF PARCEL A AND TRACTS L, L1, L2 AND W OF THE VILLAGES OF WINDSOR PARCEL E - PHASE I PLAT, AS RECORDED IN PLAT BOOK 96, PAGES 122 AND 123, ALL OF THE PUBLIC RECORDS OF PALM BEACH COUNTY, FLORIDA, LYING IN SECTION 8, TOWNSHIP 45 SOUTH, RANGE 42 EAST, PALM BEACH COUNTY, FLORIDA.

THIS INSTRUMENT PREPARED BY  
 DAVID P. LINDLEY  
 OF  
**CAULFIELD AND WHEELER, INC.**  
 SURVEYORS - ENGINEERS - PLANNERS  
 7301-A WEST PALMETTO PARK ROAD, SUITE 100A  
 BOCA RATON, FLORIDA 33433 - (561)392-1991  
 JANUARY - 2003

STATE OF FLORIDA  
 COUNTY OF PALM BEACH  
 THIS PLAT WAS FILED FOR  
 RECORD AT \_\_\_\_\_ M.  
 THIS \_\_\_\_\_ DAY OF \_\_\_\_\_  
 A.D. 2003 AND DULY RECORDED  
 IN PLAT BOOK \_\_\_\_\_ AND  
 PAGES \_\_\_\_\_ AND \_\_\_\_\_  
 DOROTHY H. WILKEN  
 CLERK CIRCUIT COURT  
 BY: \_\_\_\_\_  
 DEPUTY CLERK



**NOTES**  
**COORDINATES, BEARINGS AND DISTANCES**  
 COORDINATES SHOWN ARE GRID  
 DATUM = NAD 83 1990 ADJUSTMENT  
 ZONE = FLORIDA EAST  
 LINEAR UNIT = US SURVEY FEET  
 COORDINATE SYSTEM 1983 STATE PLANE  
 TRANSVERSE MERCATOR PROJECTION  
 ALL DISTANCES ARE GROUND  
 SCALE FACTOR = 1.0000195  
 GROUND DISTANCE X SCALE FACTOR = GRID DISTANCE  
 BEARINGS AS SHOWN HEREON ARE GRID DATUM, NAD 83 1990  
 ADJUSTMENT, FLORIDA EAST ZONE.  
 COORDINATES SHOWN ON THE CONTROL P.R.M.S MEET OR  
 EXCEED THE LOCAL ACCURACY REQUIREMENTS OF A 2  
 CENTIMETER GEODETIC CONTROL SURVEY.

S89°26'07"W (PLAT BEARING) 00°24'17" = BEARING ROTATION  
 S89°01'50"W (GRID BEARING) (PLAT TO GRID)  
 NORTH LINE THIS PLAT COUNTERCLOCKWISE

GREENBRIAR 1 OF SHERBROOKE  
 (PLAT BOOK 33, PAGES 55-57)



SHEET 3 OF 6

