

# VILLAGES OF WINDSOR TRACT H/I REPLAT

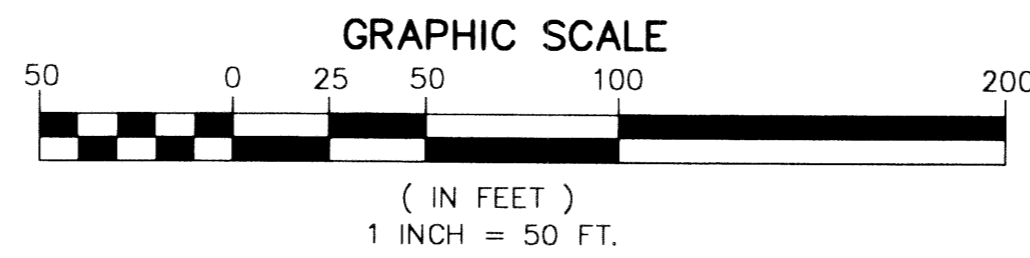
BEING A REPLAT OF TRACT H/I, VILLAGES OF WINDSOR PLAT 5, AS RECORDED IN PLAT BOOK 122 PAGES 37 THROUGH 44,  
OF THE PUBLIC RECORDS OF PALM BEACH COUNTY, FLORIDA, LYING IN SECTIONS 5 AND 8, TOWNSHIP 45 SOUTH, RANGE 42 EAST, PALM BEACH COUNTY, FLORIDA

THIS INSTRUMENT PREPARED BY  
DAVID P. LINDLEY  
OF  
**CAULFIELD and WHEELER, INC.**  
SURVEYORS - ENGINEERS - PLANNERS  
7301-A WEST PALMETTO PARK ROAD, SUITE 100A  
BOCA RATON, FLORIDA 33433 - (561)392-1991  
OCTOBER - 2002

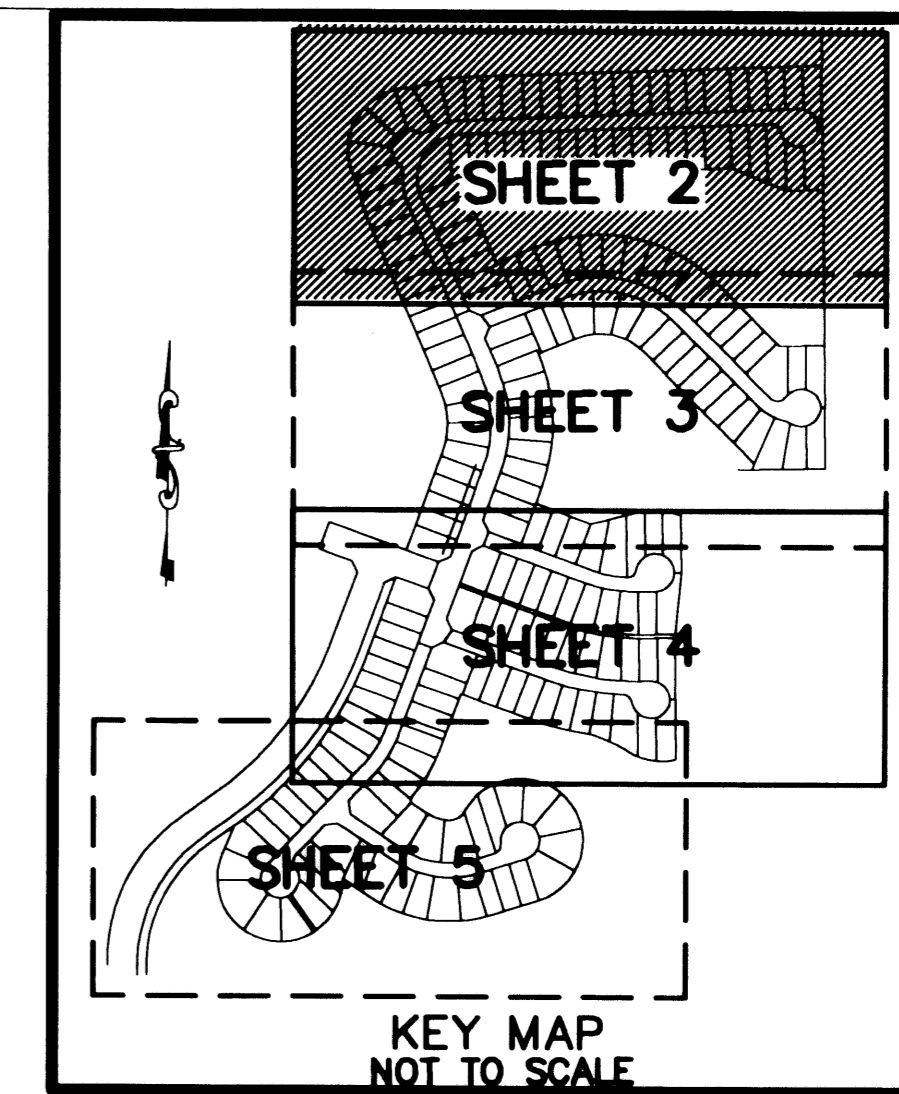
### NOTES COORDINATES, BEARINGS AND DISTANCES

COORDINATES SHOWN ARE GRID  
DATUM = NAD 83 1990 ADJUSTMENT  
ZONE = FLORIDA EAST  
LINEAR UNIT = US SURVEY FEET  
COORDINATE SYSTEM 1983 STATE PLANE  
TRANSVERSE MERCATOR PROJECTION  
ALL DISTANCES ARE GROUND  
SCALE FACTOR = 1.0000195  
GROUND DISTANCE X SCALE FACTOR = GRID DISTANCE  
BEARINGS AS SHOWN HEREON ARE GRID DATUM, NAD 83 1990  
ADJUSTMENT, FLORIDA EAST ZONE.  
COORDINATES SHOWN ON THE CONTROL P.R.M.S MEET OR  
EXCEED THE LOCAL ACCURACY REQUIREMENTS OF A 2  
CENTIMETER GEODETIC CONTROL SURVEY.

N20°02'09"E (PLAT BEARING) 00°24'17" = BEARING ROTATION  
N19°37'52"E (GRID BEARING) (PLAT TO GRID)  
WEST LINE THIS PLAT COUNTERCLOCKWISE



CURVE NO.	CHORD BEARING	CHORD DISTANCE
C1	N01°16'30"W	272.57'
C2	N32°35'42"E	238.08'
C3	S78°24'07"E	342.73'
C4	S68°45'11"E	120.42'
C5	S80°15'52"E	126.95'
C6	S80°15'52"E	230.66'
C7	S31°41'40"W	119.23'
C8	S82°02'56"E	218.77'

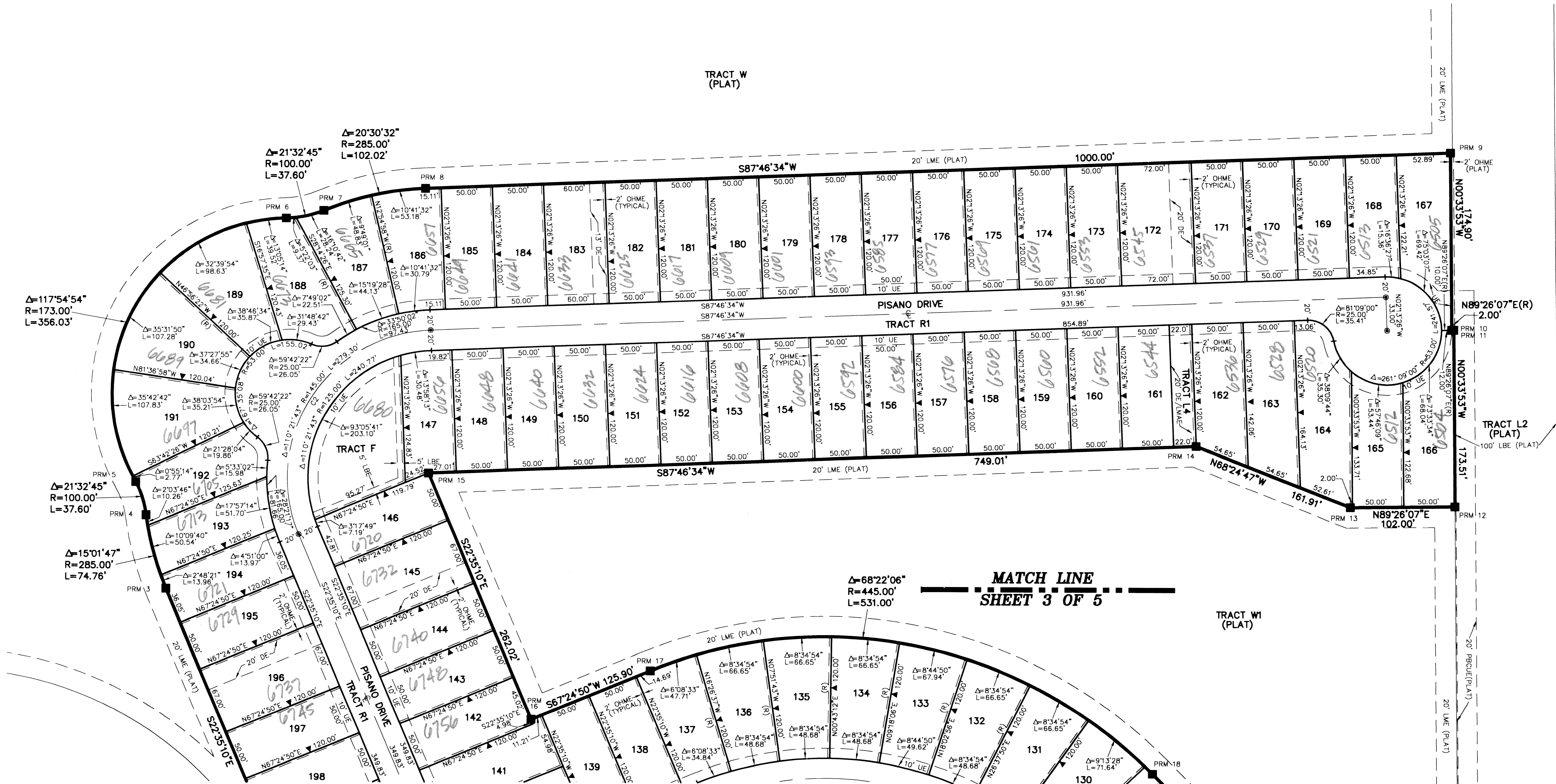


STATE OF FLORIDA  
COUNTY OF PALM BEACH  
THIS PLAT WAS FILED FOR  
RECORD AT \_\_\_\_\_ M.  
THIS \_\_\_\_\_ DAY OF \_\_\_\_\_  
A.D. 2003 AND DULY RECORDED  
IN PLAT BOOK \_\_\_\_\_ ON  
PAGES \_\_\_\_\_ AND \_\_\_\_\_

DOROTHY H. WILKEN  
CLERK CIRCUIT COURT

BY: \_\_\_\_\_  
DEPUTY CLERK

**SHEET 2 OF 5**



SUBDIVISION Villages of Windsor Tr. H/I REPLAT  
BOOK 100 PAGE 56  
FLOOD MAP # 170 A  
ZONING PUD  
QUAD # 49  
SE ZIP CODE 33447  
TAZ 1076  
PUD NAME Villages of Windsor

MATCH LINE  
SHEET 3 OF 5