

VILLAGES OF WINDSOR TRACT H/I REPLAT

BEING A REPLAT OF TRACT H/I, VILLAGES OF WINDSOR PLAT 5, AS RECORDED IN PLAT BOOK 100 PAGES 27 THROUGH 41,
OF THE PUBLIC RECORDS OF PALM BEACH COUNTY, FLORIDA, LYING IN SECTIONS 5 AND 8, TOWNSHIP 45 SOUTH, RANGE 42 EAST, PALM BEACH COUNTY, FLORIDA

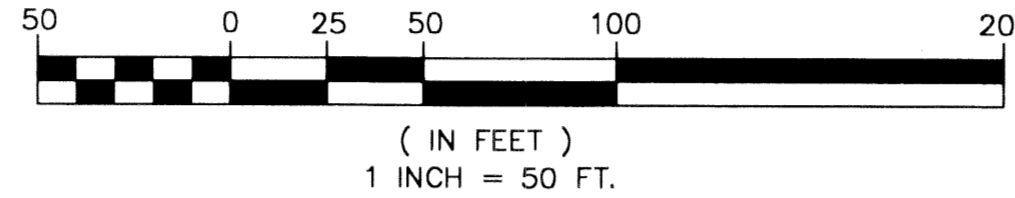
THIS INSTRUMENT PREPARED BY
DAVID P. LINDLEY

OF
CAULFIELD and WHEELER, INC.
SURVEYORS - ENGINEERS - PLANNERS
7301-A WEST PALMETTO PARK ROAD, SUITE 100A
BOCA RATON, FLORIDA 33433 - (561)392-1991
OCTOBER - 2002

CURVE TABLE

CURVE NO.	CHORD BEARING	CHORD DISTANCE
C1	N01°16'30"W	272.57'
C2	N32°35'42"E	238.08'
C3	S78°24'07"E	342.73'
C4	S68°45'11"E	120.42'
C5	S80°15'52"E	126.95'
C6	S80°15'52"E	230.66'
C7	S31°41'40"W	119.23'
C8	S82°02'56"E	218.77'

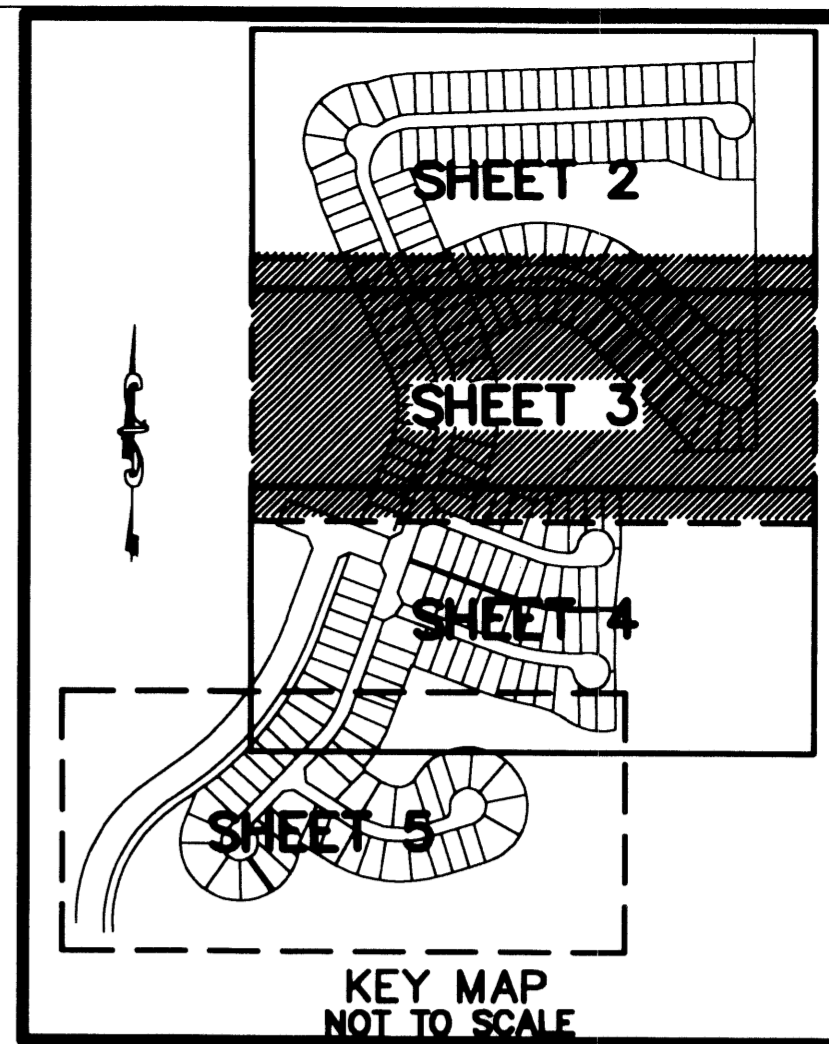
GRAPHIC SCALE



NOTES
COORDINATES, BEARINGS AND DISTANCES

COORDINATES SHOWN ARE GRID
DATUM = NAD 83 1990 ADJUSTMENT
ZONE = FLORIDA EAST
LINEAR UNIT = US SURVEY FEET
COORDINATE SYSTEM 1983 STATE PLANE
TRANSVERSE MERCATOR PROJECTION
ALL DISTANCES ARE GROUND
SCALE FACTOR = 1.0000195
GROUND DISTANCE X SCALE FACTOR = GRID DISTANCE
BEARINGS AS SHOWN HEREON ARE GRID DATUM, NAD 83 1990
ADJUSTMENT, FLORIDA EAST ZONE.
COORDINATES SHOWN ON THE CONTROL P.R.M.S MEET OR
EXCEED THE LOCAL ACCURACY REQUIREMENTS OF A 2
CENTIMETER GEODETIC CONTROL SURVEY.

N20°02'09"E (PLAT BEARING) 00°24'17" = BEARING ROTATION
N19°37'52"E (GRID BEARING) (PLAT TO GRID)
WEST LINE THIS PLAT COUNTERCLOCKWISE

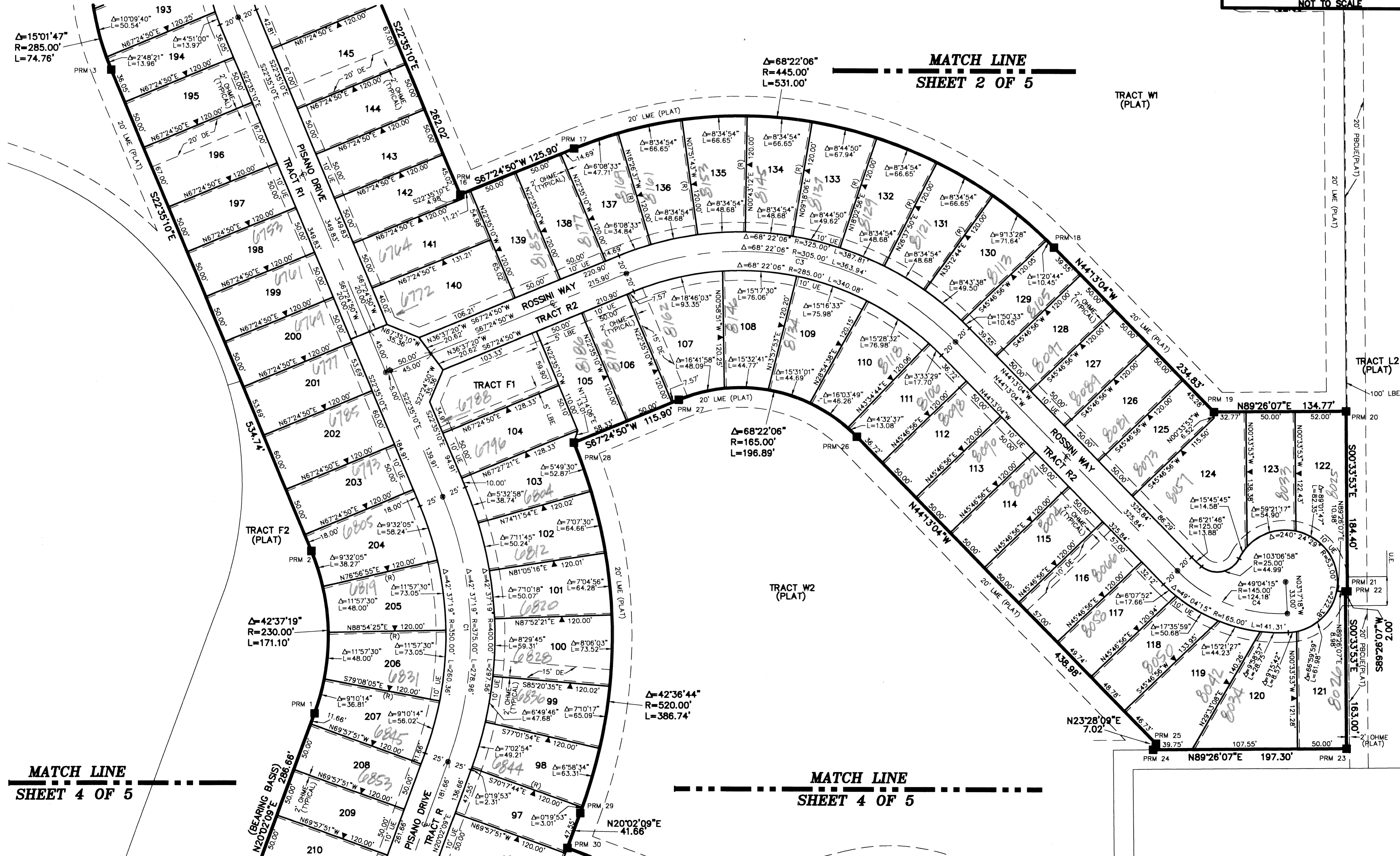


STATE OF FLORIDA
COUNTY OF PALM BEACH
THIS PLAT WAS FILED FOR
RECORD AT _____ M.
THIS _____ DAY OF
A.D. 2003 AND DULY RECORDED
IN PLAT BOOK _____ ON
PAGES _____ AND _____

DOROTHY H. WILKEN
CLERK CIRCUIT COURT

BY: _____
DEPUTY CLERK

SHEET 3 OF 5



COORDINATE TABLE

PRM	NORTHING	EASTING
1	816106.24	925023.10
2	816273.35	925018.20
3	816765.62	924809.34
4	816837.47	924789.45
5	816872.87	924777.44
6	817131.02	924923.20
7	817139.02	924959.71
8	817161.65	925058.63
9	817207.51	926057.60
10	817032.64	926060.56
11	817032.67	926052.56
12	816859.18	926065.49
13	816857.46	925963.50
14	816915.96	925812.53
15	816861.95	925644.29
16	816640.40	925166.64
17	816689.57	925282.54
18	816592.50	925773.08
19	816425.36	925938.04
20	816427.64	926072.80
21	816243.26	926075.92
22	816243.23	926073.92
23	816080.25	926076.67
24	816076.91	925879.40
25	816083.37	925882.15
26	816395.82	925573.79
27	816431.81	925391.90
28	816386.54	925285.21
29	816006.81	925296.25
30	815989.57	925282.26
31	815915.15	925434.85
32	815949.88	925570.24
33	815940.95	925682.20
34	815783.51	925684.87
35	815600.23	925670.31
36	815258.63	925676.09
37	815282.37	925539.11
38	815328.39	925421.56
39	815363.85	925283.76
40	815436.05	925081.34
41	815276.86	925024.55
42	815140.85	924945.92
43	815129.64	924948.29
44	815102.23	924909.58
45	815083.73	925052.99
46	815110.22	925097.18
47	814864.20	925302.91
48	814822.75	925174.25
49	814867.26	924838.29
50	814916.32	924762.59
51	814980.68	924429.76
52	815061.25	924463.13
53	815533.21	924815.71
54	815760.89	924899.92
55	815728.97	924989.40
56	815804.32	925016.28
57	815836.24	924926.80

SUBDIVISION VILLAGES OF WINDSOR TR H/I REPLAT
 BOOK 100 PAGE 57
 RECORD ZONE B
 QUAD # 41
 SB
 TAZ 1076
 PLAT NAME VILLAGES OF WINDSOR

MATCH LINE
SHEET 4 OF 5

MATCH LINE
SHEET 4 OF 5