

VILLAGES OF WINDSOR TRACT H/I REPLAT

BEING A REPLAT OF TRACT H/I, VILLAGES OF WINDSOR PLAT 5, AS RECORDED IN PLAT BOOK 122 PAGES 37 THROUGH 47,
OF THE PUBLIC RECORDS OF PALM BEACH COUNTY, FLORIDA, LYING IN SECTIONS 5 AND 8, TOWNSHIP 45 SOUTH, RANGE 42 EAST, PALM BEACH COUNTY, FLORIDA

THIS INSTRUMENT PREPARED BY
DAVID P. LINDLEY

OF
CAULFIELD and WHEELER, INC.
SURVEYORS - ENGINEERS - PLANNERS
7301-A WEST PALMETTO PARK ROAD, SUITE 100A
BOCA RATON, FLORIDA 33433 - (561)392-1991
OCTOBER - 2002

CURVE TABLE

CURVE NO.	CHORD BEARING	CHORD DISTANCE
C1	N01°16'30"W	272.57'
C2	N32°35'42"E	238.08'
C3	S78°24'07"E	342.73'
C4	S68°45'11"E	120.42'
C5	S80°15'52"E	126.95'
C6	S80°15'52"E	230.66'
C7	S31°14'40"W	119.23'
C8	S82°02'56"E	218.77'

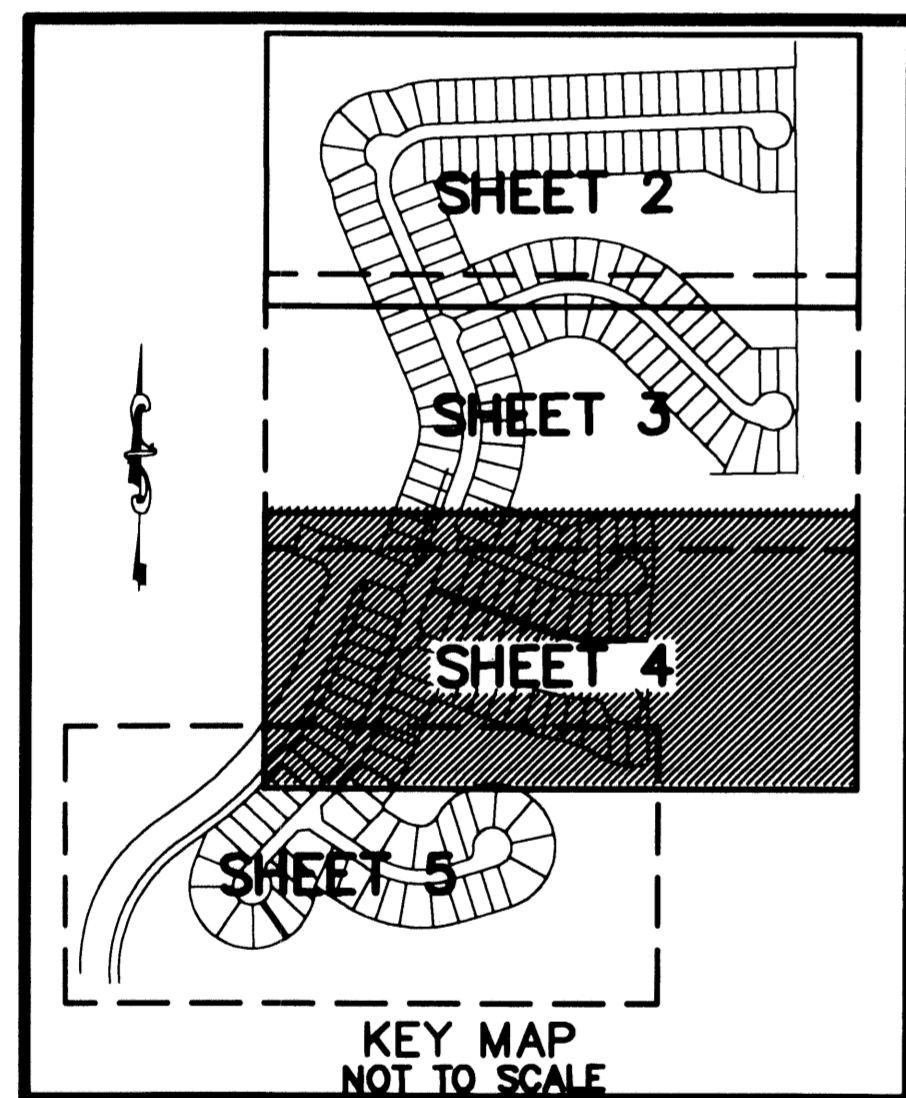
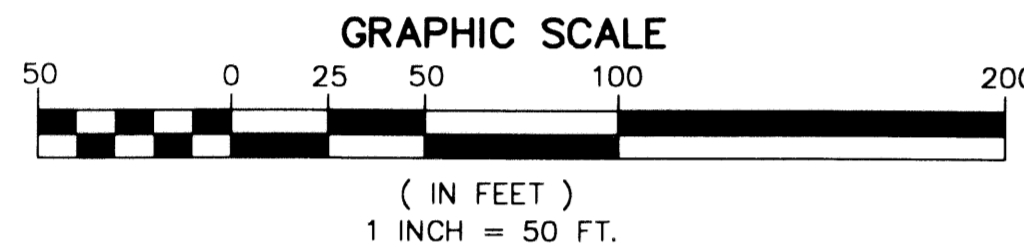
STATE OF FLORIDA
COUNTY OF PALM BEACH
THIS PLAT WAS FILED FOR
RECORD AT _____ M.
THIS _____ DAY OF _____
A.D. 2003 AND DULY RECORDED
IN PLAT BOOK _____ ON
PAGES _____ AND _____
DOROTHY H. WILKEN
CLERK CIRCUIT COURT

BY: _____
DEPUTY CLERK

NOTES
COORDINATES, BEARINGS AND DISTANCES

COORDINATES SHOWN ARE GRID
DATUM = NAD 83 1990 ADJUSTMENT
ZONE = FLORIDA EAST
LINEAR UNIT = US SURVEY FEET
COORDINATE SYSTEM = 1983 STATE PLANE
TRANSVERSE MERCATOR PROJECTION
ALL DISTANCES ARE GROUND
SCALE FACTOR = 1.0000195
GROUND DISTANCE X SCALE FACTOR = GRID DISTANCE
BEARINGS AS SHOWN HEREON ARE GRID DATUM, NAD 83 1990
ADJUSTMENT, FLORIDA EAST ZONE.
COORDINATES SHOWN ON THE CONTROL P.R.M.S MEET OR
EXCEED THE LOCAL ACCURACY REQUIREMENTS OF A 2
CENTIMETER GEODETIC CONTROL SURVEY.

N20°02'09"E (PLAT BEARING) 00°24'17" = BEARING ROTATION
N19°37'52"E (GRID BEARING) (PLAT TO GRID)
WEST LINE THIS PLAT COUNTERCLOCKWISE



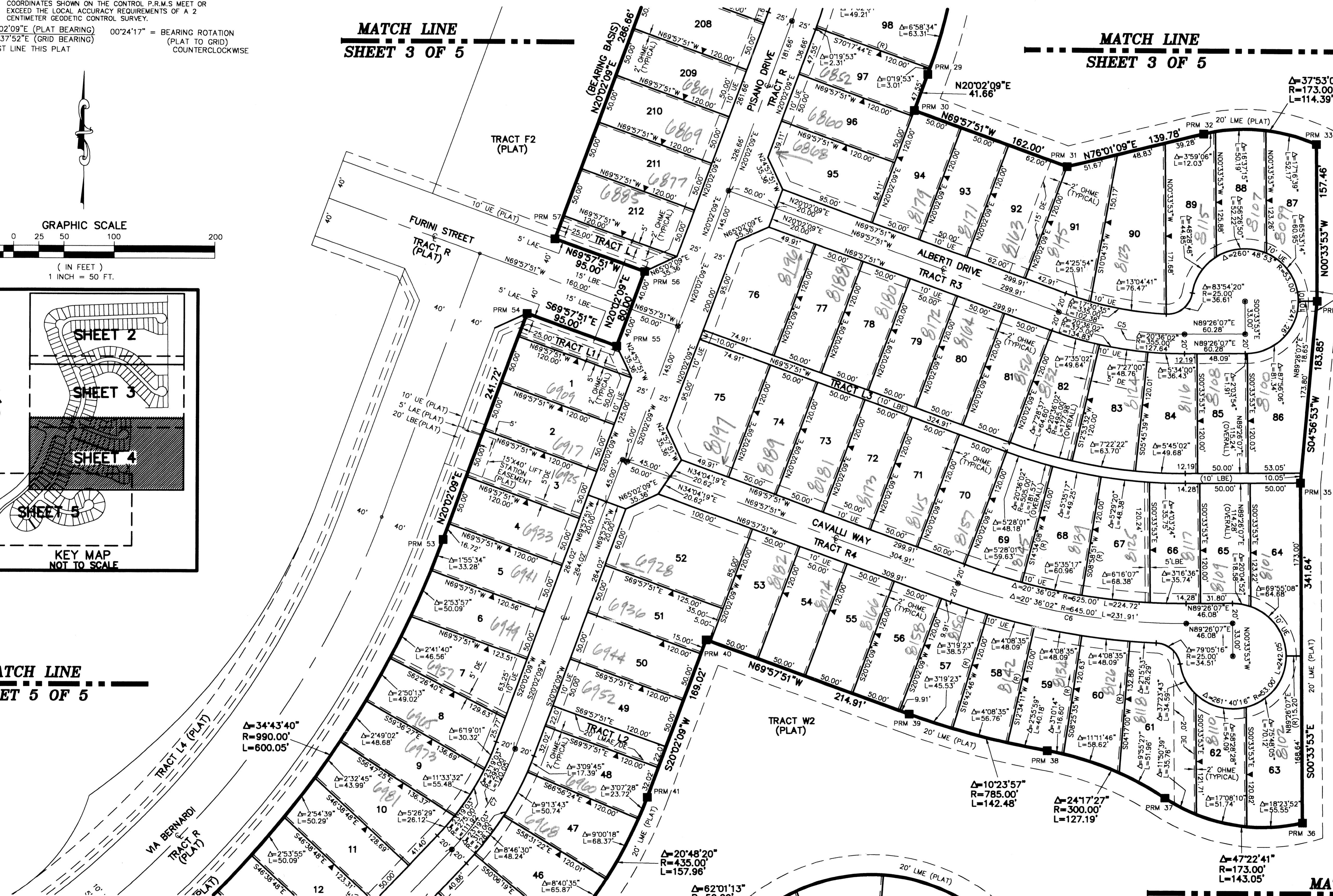
MATCH LINE
SHEET 3 OF 5

MATCH LINE
SHEET 3 OF 5

SHEET 4 OF 5

MATCH LINE
SHEET 5 OF 5

MATCH LINE
SHEET 5 OF 5



REPLAT
SUBDIVISION/VILLAGES OF Windsor Tr H/I
BOOK 150
FLOOD ZONE B
QUAD # 49
SE
TAZ 1026
PUD NAME VILLAGES OF Windsor