

OAKS AT BOCA RATON PLAT FIVE

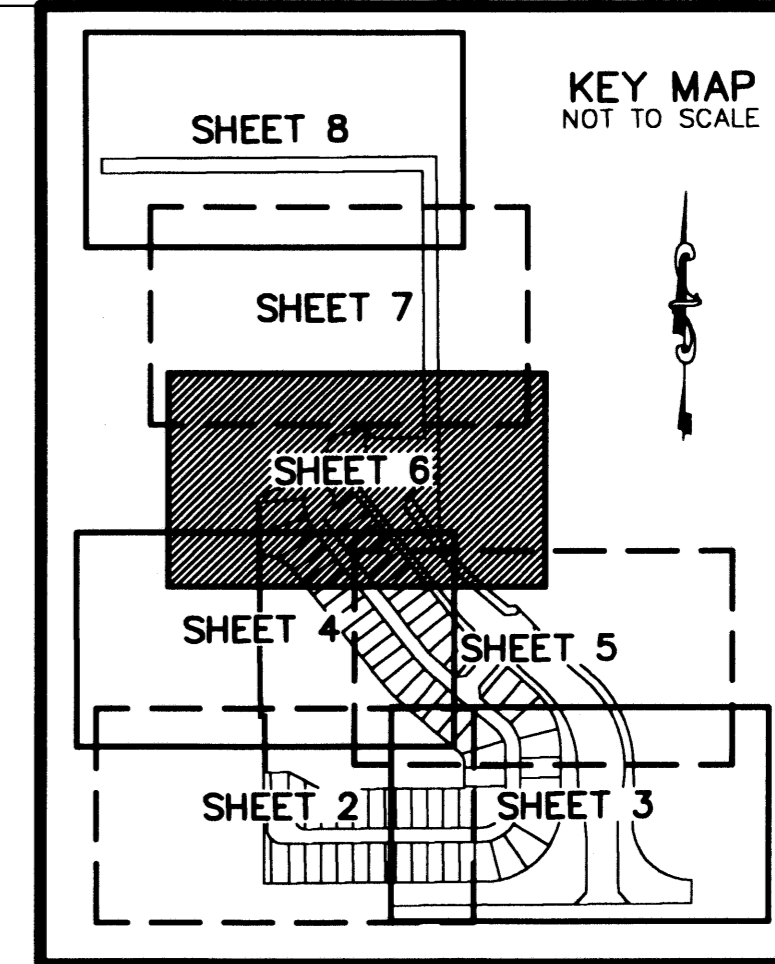
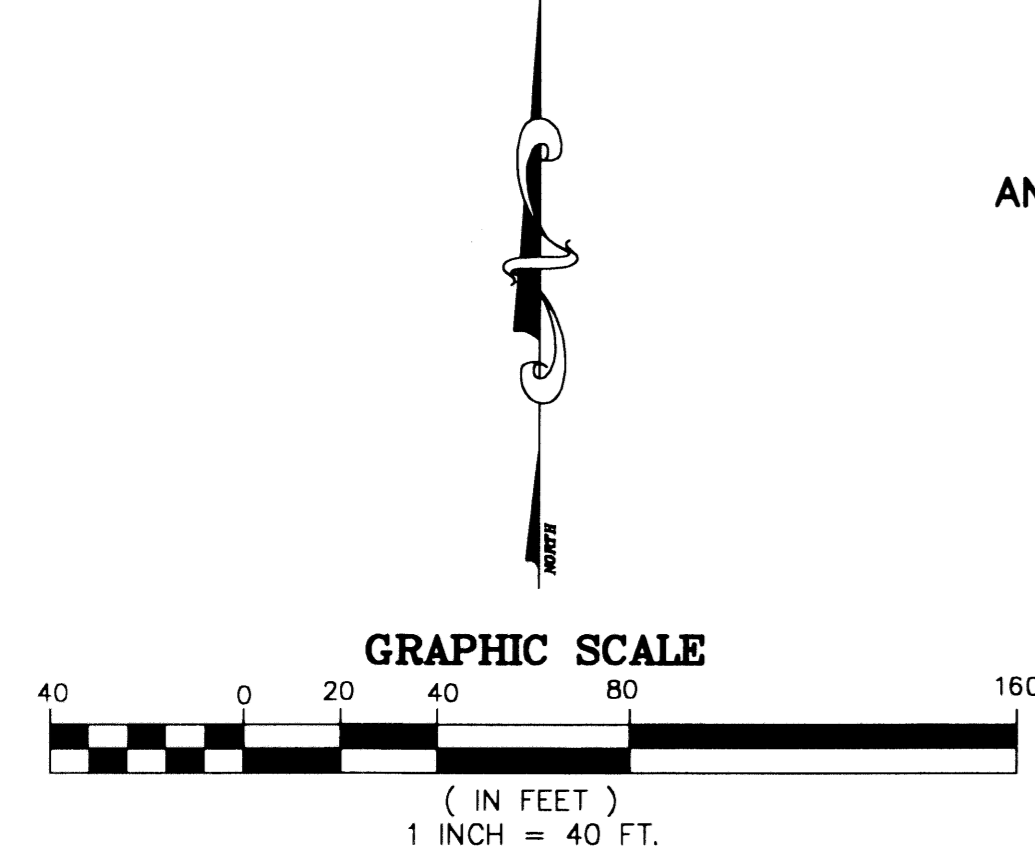
A PLANNED UNIT DEVELOPMENT BEING A PART OF RAINBOW PUD
 BEING A REPLAT OF TRACTS D, R-2, AND L-3 THROUGH L-6, "OAKS AT BOCA RATON PLAT ONE", AS RECORDED IN PLAT BOOK 95, PAGES 16 THROUGH 22,
 AND A PORTION OF TRACTS 101, 102, 123, 124, AND 125, BLOCK 70, "PALM BEACH FARMS COMPANY PLAT NO. 3", AS RECORDED IN PLAT BOOK 2, PAGES 45 THROUGH 54
 ALL OF THE PUBLIC RECORDS OF PALM BEACH COUNTY, FLORIDA,
 LYING IN SECTION 31, TOWNSHIP 46 SOUTH, RANGE 42 EAST, PALM BEACH COUNTY, FLORIDA

THIS INSTRUMENT PREPARED BY
 DAVID P. LINDLEY
 OF
CAULFIELD and WHEELER, INC.
 SURVEYORS - ENGINEERS - PLANNERS
 7301-A WEST PALMETTO PARK ROAD, SUITE 100A
 BOCA RATON, FLORIDA 33433 - (561)392-1991
 JANUARY - 2003

NOTES COORDINATES, BEARINGS AND DISTANCES

COORDINATES SHOWN ARE GRID
 DATUM = NAD 83 1990 ADJUSTMENT
 ZONE = FLORIDA EAST
 LINEAR UNIT = US SURVEY FEET
 COORDINATE SYSTEM 1983 STATE PLANE
 TRANSVERSE MERCATOR PROJECTION
 ALL DISTANCES ARE GROUND
 SCALE FACTOR = 1.00002099
 GROUND DISTANCE X SCALE FACTOR = GRID DISTANCE
 BEARINGS AS SHOWN HEREON ARE GRID DATUM, NAD 83 1990
 ADJUSTMENT, FLORIDA EAST ZONE.

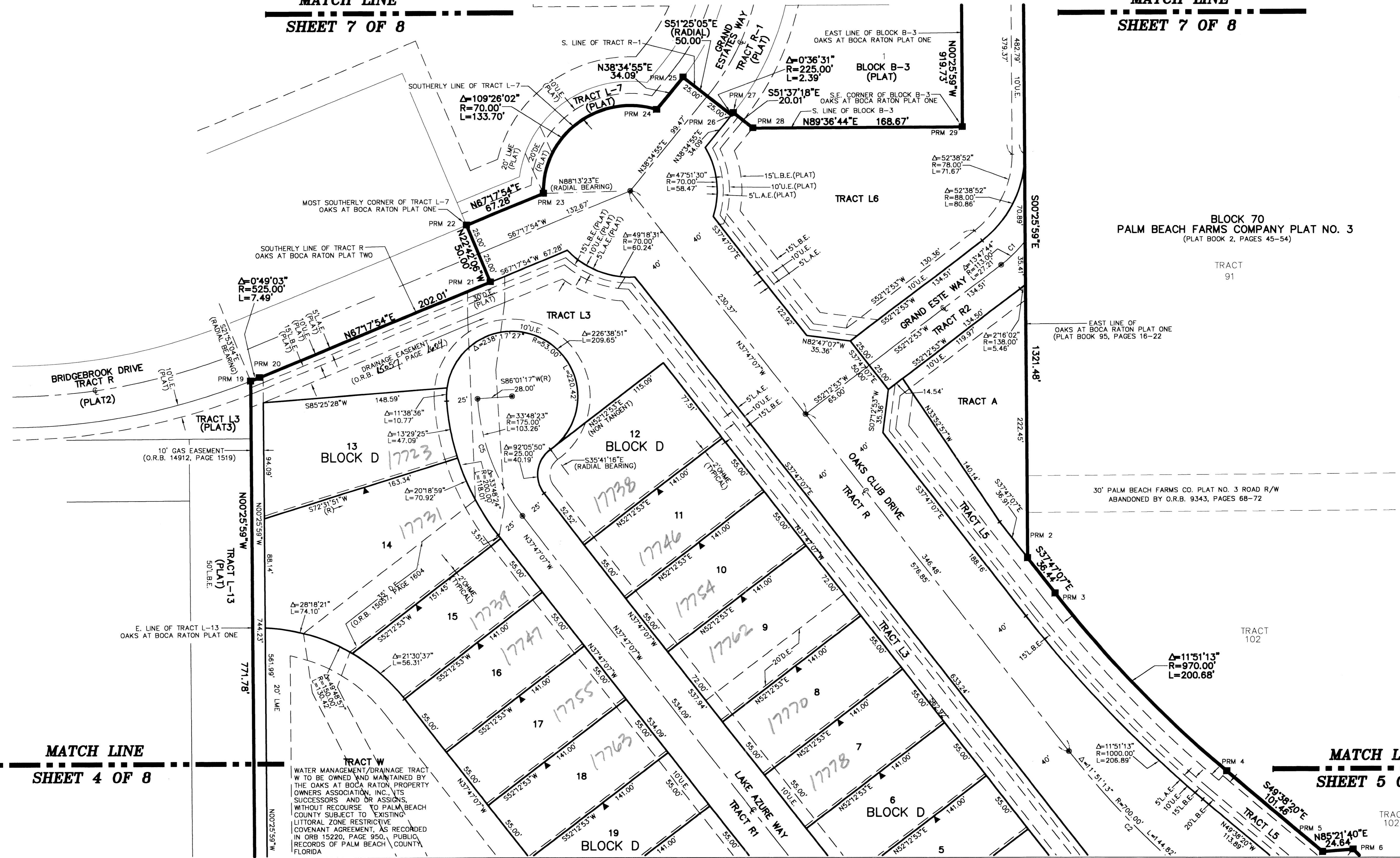
CURVE TABLE		
CURVE NO.	CHORD BEARING	CHORD DISTANCE
C1	N45°19'01"E	27.14'
C2	N43°42'43"W	144.56'
C3	N25°02'09"W	333.06'
C4	N43°42'43"W	103.26'
C5	N20°52'55"W	101.76'
C6	S25°01'01"E	94.16'
C7	S44°35'10"W	159.75'



STATE OF FLORIDA
 COUNTY OF PALM BEACH
 THIS PLAT WAS FILED FOR
 RECORD AT _____ M.
 THIS _____ DAY OF _____
 A.D. 2003 AND DULY RECORDED
 IN PLAT BOOK _____ ON
 PAGES _____ AND _____
 DOROTHY H. WILKEN
 CLERK CIRCUIT COURT
 BY: _____
 DEPUTY CLERK

MATCH LINE
 SHEET 7 OF 8

MATCH LINE
 SHEET 7 OF 8



MATCH LINE
 SHEET 4 OF 8

MATCH LINE
 SHEET 5 OF 8

SUBDIVISION OAKS AT BOCA RATON PLAT FIVE
 BLOCK 100 PAGE 81 FLOOD MAP # 2/5 A
 FLOOD ZONE 15 PLANNED UNIT DEVELOPMENT
 QUAD # 52 ZONING PUD
 SE ZIP CODE 33416
 TAZ 880
 PUD NAME RAINBOW

TRACT W
 WATER MANAGEMENT/DRAINAGE TRACT
 W TO BE OWNED AND MAINTAINED BY
 THE OAKS AT BOCA RATON PROPERTY
 OWNERS ASSOCIATION, INC., ITS
 SUCCESSORS AND OR ASSIGNS,
 WITHOUT RECOURSE TO PALM BEACH
 COUNTY SUBJECT TO EXISTING
 LITTORAL ZONE RESTRICTIVE
 COVENANT AGREEMENT, AS RECORDED
 IN ORB 15220, PAGE 950, PUBLIC
 RECORDS OF PALM BEACH COUNTY,
 FLORIDA