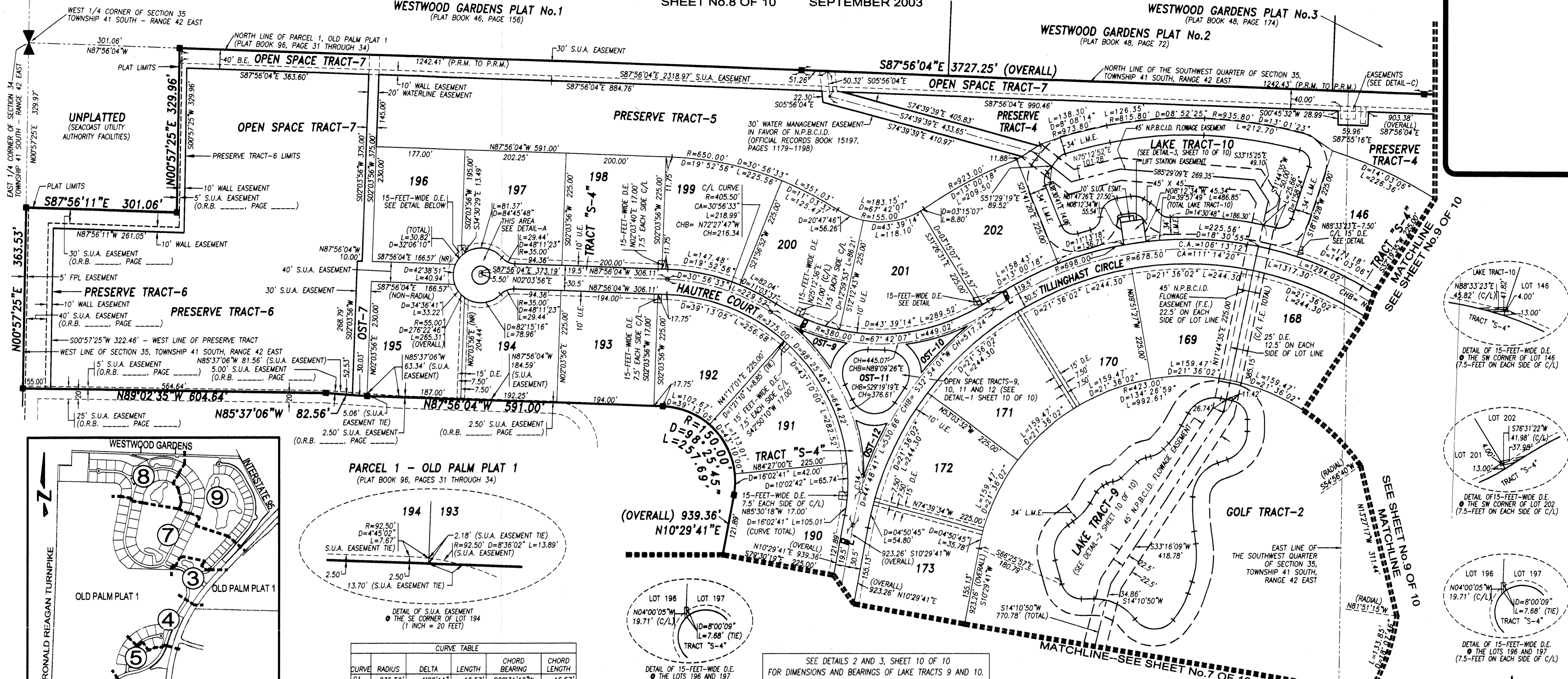
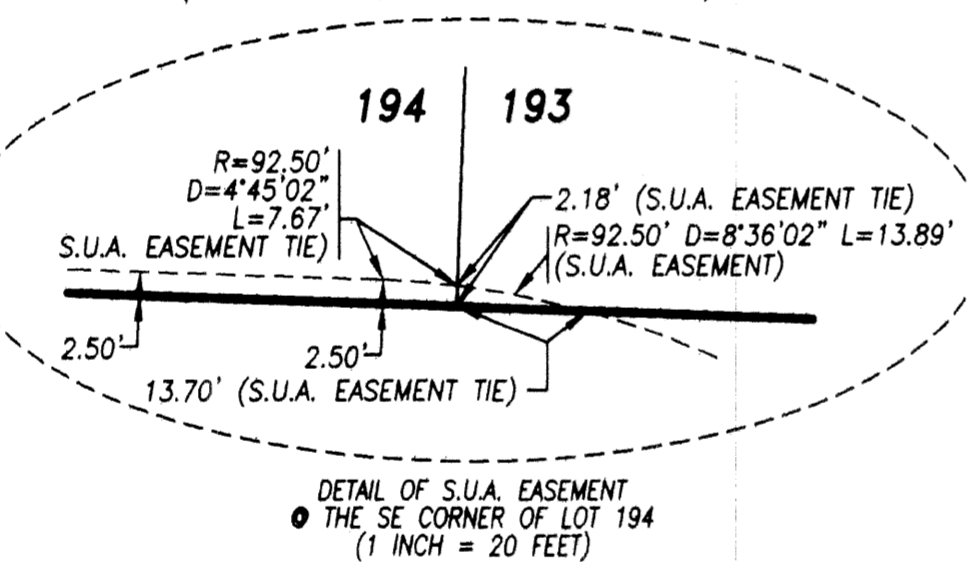


OLD PALM PLAT THREE
A REPLAT OF A PORTION OF PARCEL 1, OLD PALM PLAT 1 AS RECORDED IN
PLAT BOOK 96, PAGES 31 THROUGH 34, PUBLIC RECORDS OF PALM BEACH COUNTY, FLORIDA
LYING IN SECTION 2, TOWNSHIP 42 SOUTH, RANGE 42 EAST, AND SECTION 35, TOWNSHIP 41 SOUTH, RANGE 42 EAST,
CITY OF PALM BEACH GARDENS, PALM BEACH COUNTY, FLORIDA
SHEET No.8 OF 10 SEPTEMBER 2003

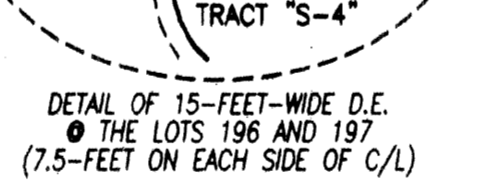


PARCEL 1 - OLD PALM PLAT 1
(PLAT BOOK 96, PAGES 31 THROUGH 34)

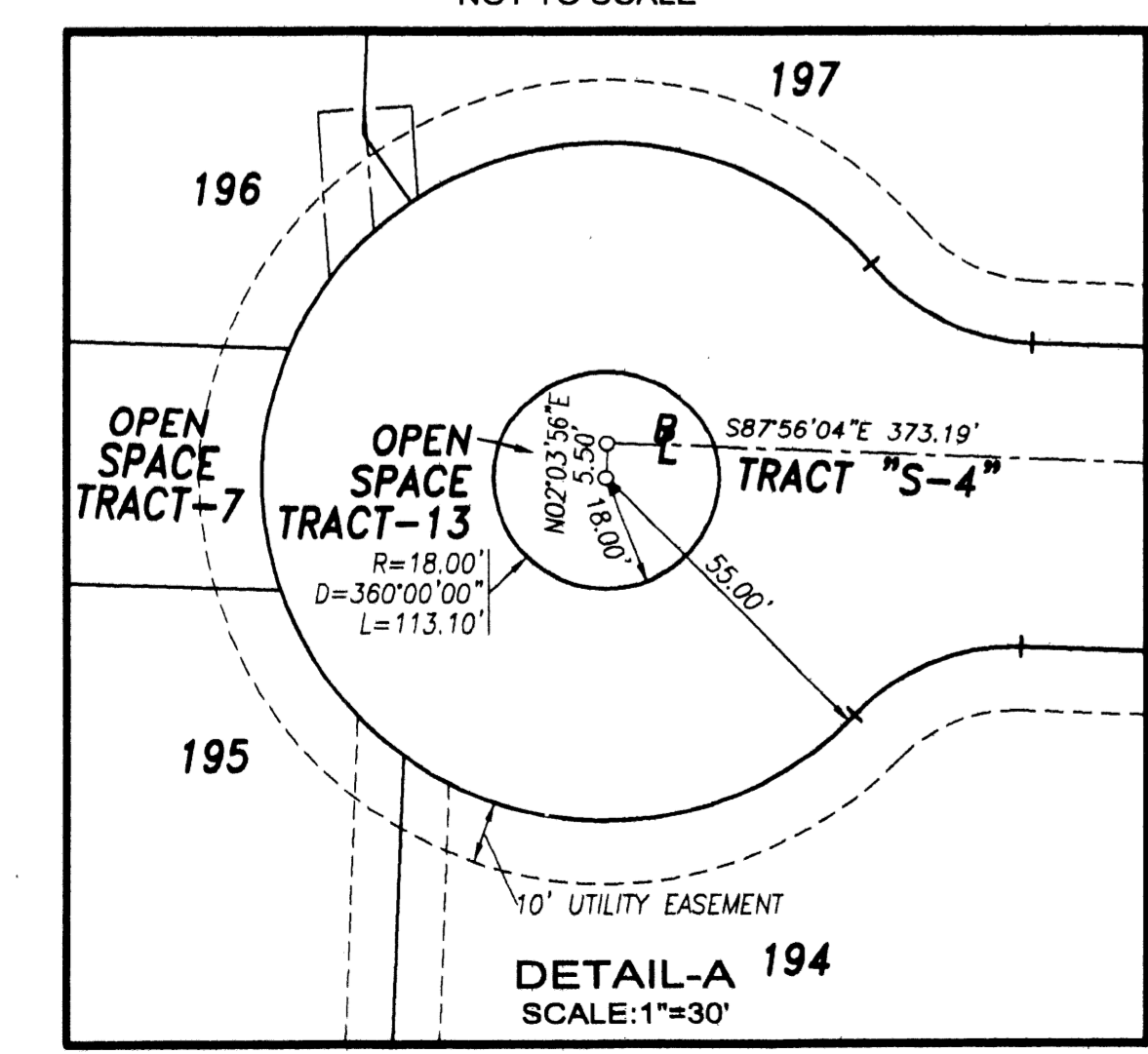
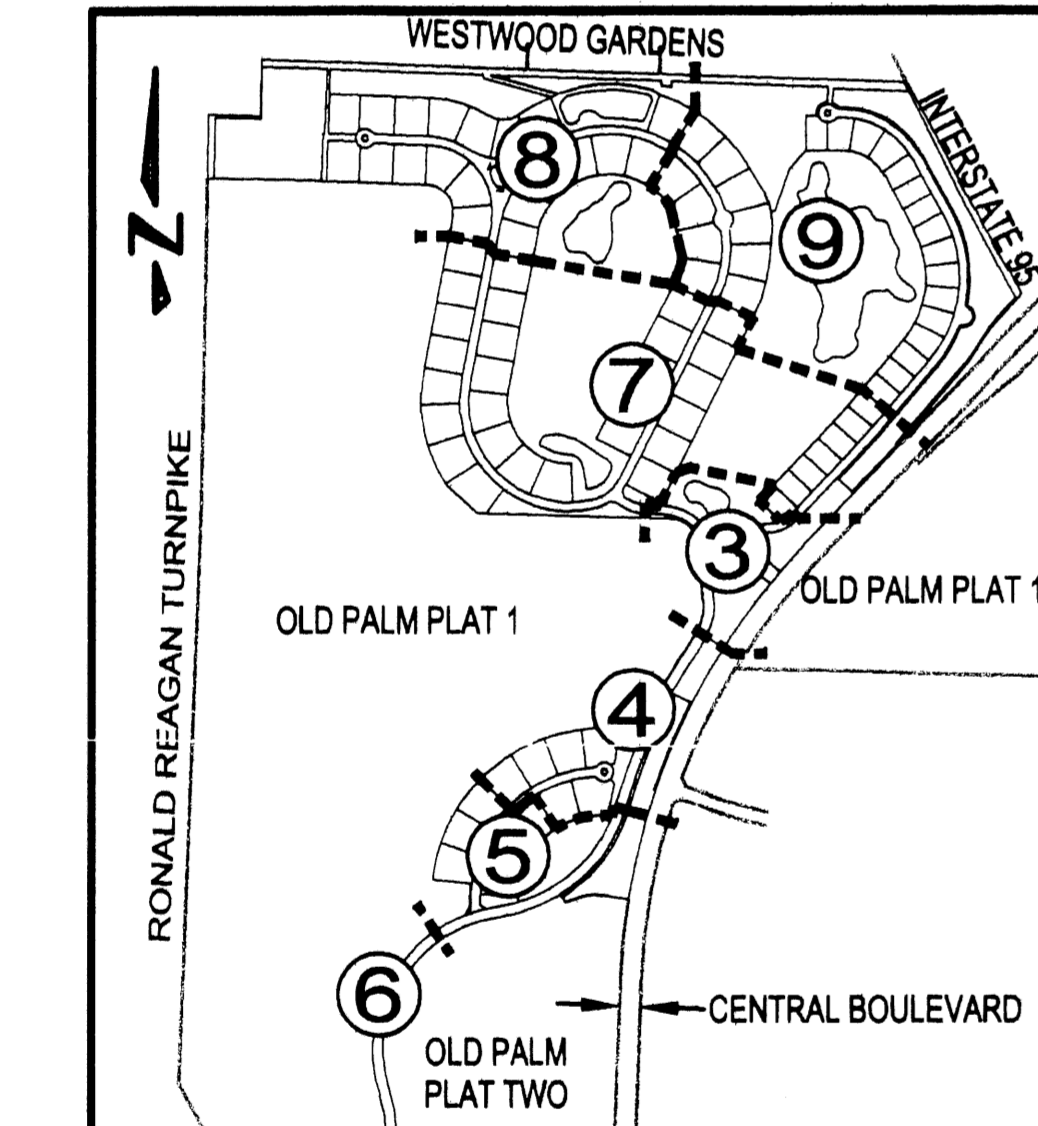


CURVE TABLE

CURVE	RADIUS	DELTA	LENGTH	CHORD BEARING	CHORD LENGTH
C1	835.50'	1'08"11"	16.57'	S69°31'12"W	16.57'
C2	835.50'	2'58"13"	43.31'	S71°34'24"W	43.31'
C3	945.00'	5'01"54"	82.99'	N55°02'39"E	82.98'
C4	924.50'	5'20"05"	86.08'	N55°11'45"E	86.05'
C5	250.00'	4'75"08"	209.01'	S64°14'09"E	202.98'
C6	475.00'	3'32"35"	29.37'	N83°52'17"W	29.37'
C7	269.50'	1'53"17"	8.88'	N27°13'10"E	8.88'
C8	255.50'	1'35"02"	61.71'	S38°19'36"E	61.56'
C9	255.50'	0'54"58"	4.09'	S45°42'15"E	4.09'
C10	4013.00'	3'03"20"	214.01'	N42°05'48"E	213.99'
C11	3879.72'	0'46"05"	52.01'	S39°21'57"W	52.01'
C12	3879.72'	0'35"27"	40.00'	S40°02'42"W	40.00'
C13	225.00'	15'10"32"	59.59'	S38°59'41"E	59.42'
C14	275.00'	14'22"55"	69.03'	S38°35'53"E	68.85'
C15	244.50'	2'35"14"	11.04'	S42°57'04"W	11.04'
C16	269.50'	18'06"02"	85.14'	N66°35'17"E	84.78'
C17	255.50'	14'45"19"	65.80'	S38°47'05"E	65.62'
C18	269.50'	8'00"55"	37.70'	N32°10'15"E	37.67'
C19	84.00'	38'36"48"	56.61'	N15°29'40"W	56.54'
C20	250.00'	2'20"00"	118.17'	N62°05'47"E	117.08'
C21	84.00'	13'22"17"	19.60'	N41°29'12"W	19.56'
C22	84.00'	21'25"22"	31.41'	N58°53'02"W	31.22'
C23	84.00'	7'08"20"	10.47'	S26°50'57"W	10.46'
C24	84.00'	13'26"29"	19.71'	S37°08'21"W	19.66'
C25	84.00'	21'16"21"	31.19'	S54°29'46"W	31.01'
C26	250.00'	22'16"46"	97.21'	N37°24'54"E	96.60'
C27	219.50'	49'21"46"	189.11'	N50°57'24"E	183.31'
C28	222.00'	7'35"57"	29.44'	S24°42'49"W	29.42'
C29	250.00'	49'21"46"	215.39'	N50°57'24"E	208.79'
C30	3993.50'	3'03"20"	212.97'	N42°05'48"E	212.95'
C31	494.50'	1'53"17"	16.29'	N27°13'10"E	16.29'
C32	269.50'	9'54"12"	46.58'	N31°13'37"E	46.52'
C33	678.50'	5'55"35"	70.18'	S13°27'28"W	70.15'
C34	100.00'	18'04"22"	31.54'	N07°23'04"E	31.41'

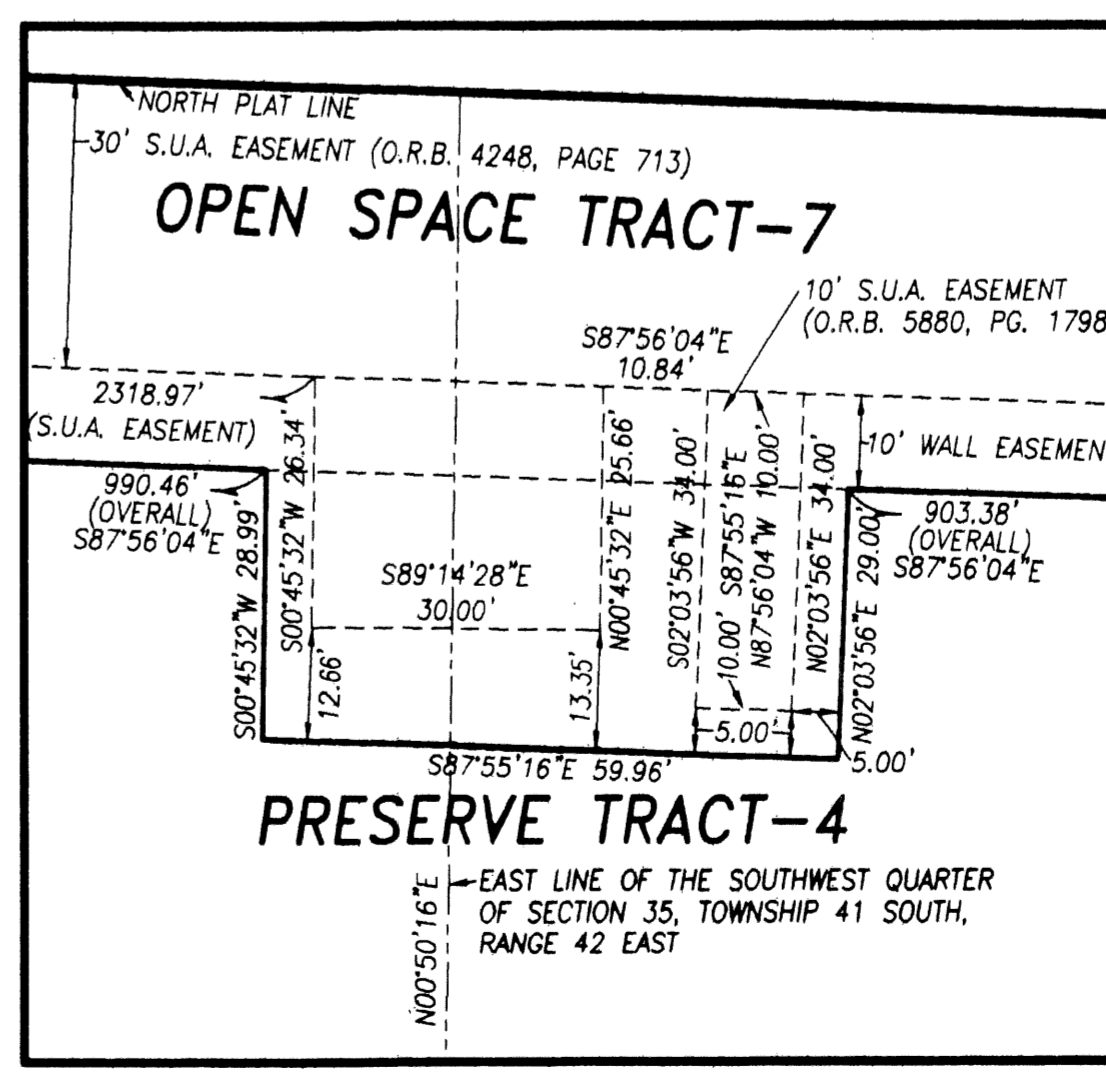


SEE DETAILS 2 AND 3, SHEET 10 OF 10 FOR DIMENSIONS AND BEARINGS OF LAKE TRACTS 9 AND 10.



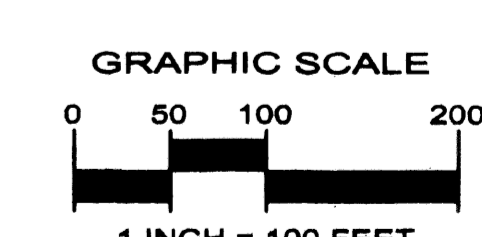
SYMBOLS LEGEND

- SET PERMANENT REFERENCE MONUMENT (P.R.M.) "L.B.4887"
- PERMANENT CONTROL POINT (P.C.P.)
- NORTHERN PALM BEACH COUNTY IMPROVEMENT DISTRICT
- RADIUS
- CENTRAL ANGLE
- ARC LENGTH
- INTERSECTION
- BASELINE OF RIGHT-OF-WAY
- POINT OF BEGINNING
- POINT OF COMMENCING
- CHANGE IN DIRECTION
- PROFESSIONAL SURVEYOR AND MAPPER
- POINT OF CURVATURE
- NON-RADIAL LOT LINE
- PERMANENT REFERENCE MONUMENT (P.R.M.) "L.B.4431"
- FOUND 6"X8" STATE ROAD DEPARTMENT PERMANENT REFERENCE MONUMENT
- CHORD BEARING CH-CHORD DISTANCE
- SEACOAST UTILITY AUTHORITY
- SEWER LINE EASEMENT
- WATER LINE EASEMENT
- WATER AND SEWER EASEMENT
- DRAINAGE EASEMENT
- UTILITY EASEMENT
- OFFICIAL RECORDS BOOK
- PAGE
- TOWNSHIP
- RANGE
- OPEN SPACE TRACT



LINE TABLE

LINE	LENGTH	BEARING
L1	36.68'	S32°24'09"W
L2	31.89'	N32°08'13"W
L3	94.28'	S88°11'13"E
L4	42.07'	S08°20'12"E



Keshavarz & Associates, Inc.
CONSULTING ENGINEERS - SURVEYORS
711 N. Dixie Highway, Suite 201
West Palm Beach, Florida 33401
Tel: (561) 689-8600 Fax: (561) 689-7476 LB 4897
THIS INSTRUMENT WAS PREPARED BY MANUEL A. GUTIERREZ, PSM
PROFESSIONAL SURVEYOR AND MAPPER NO. 4102
IN THE OFFICES OF KESHAVARZ & ASSOCIATES, INC.
\\KA\F\S\U\769_OLDPALM_PL3.dwg 769_PLAT_SHTS_3-10.DWG 10/21/03 02:42:52 PM EDT