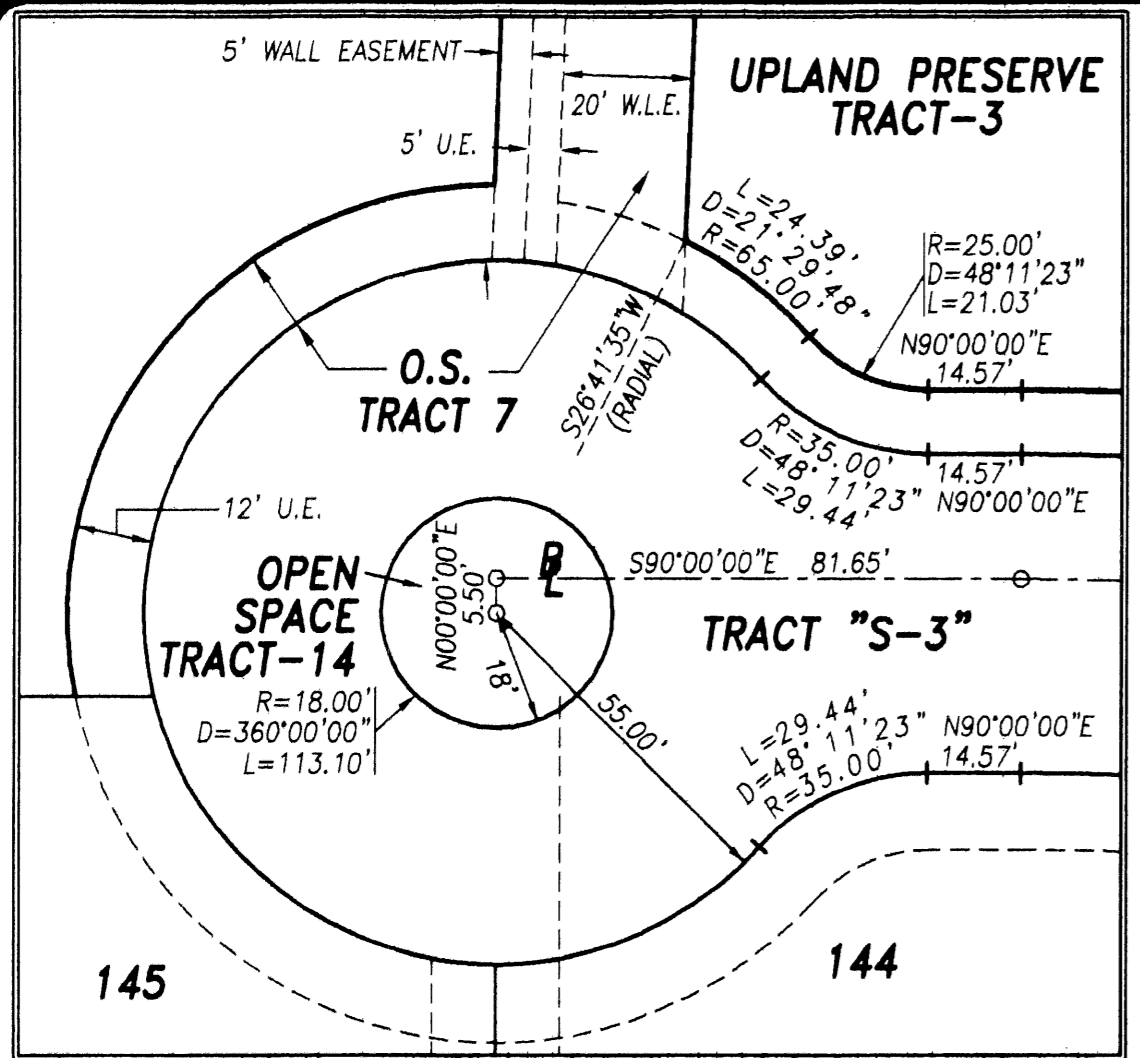


OLD PALM PLAT THREE
A REPLAT OF A PORTION OF PARCEL 1, OLD PALM PLAT 1 AS RECORDED IN
PLAT BOOK 96, PAGES 31 THROUGH 34, PUBLIC RECORDS OF PALM BEACH COUNTY, FLORIDA
LYING IN SECTION 2, TOWNSHIP 42 SOUTH, RANGE 42 EAST, AND SECTION 35, TOWNSHIP 41 SOUTH, RANGE 42 EAST,
CITY OF PALM BEACH GARDENS, PALM BEACH COUNTY, FLORIDA
SHEET No.9 OF 10 SEPTEMBER 2003



LINE TABLE

LINE LENGTH	BEARING
L1 36.68'	S32°24'09"W
L2 31.89'	N32°08'13"W
L3 94.28'	S88°11'13"E
L4 42.07'	S08°20'12"E

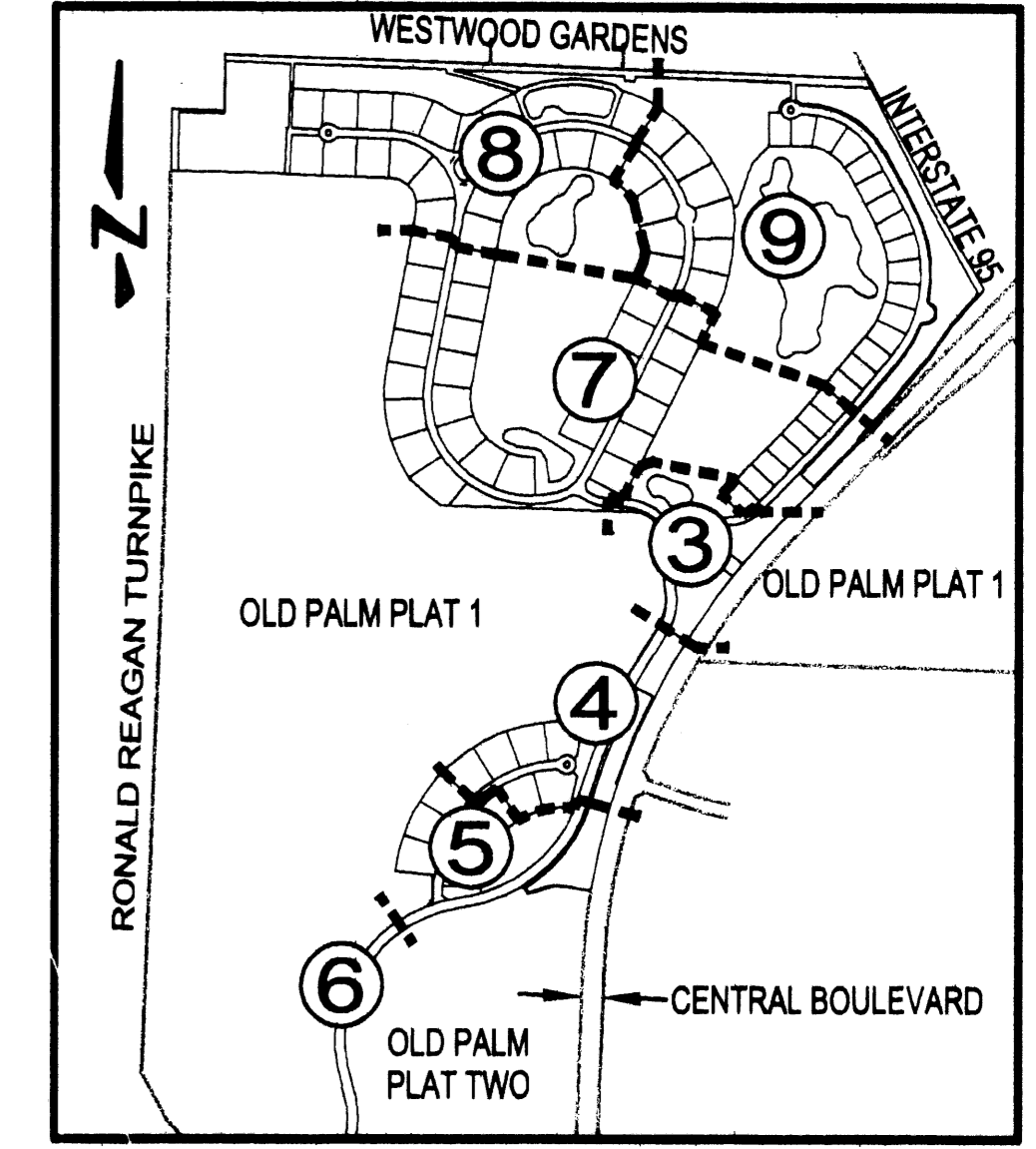
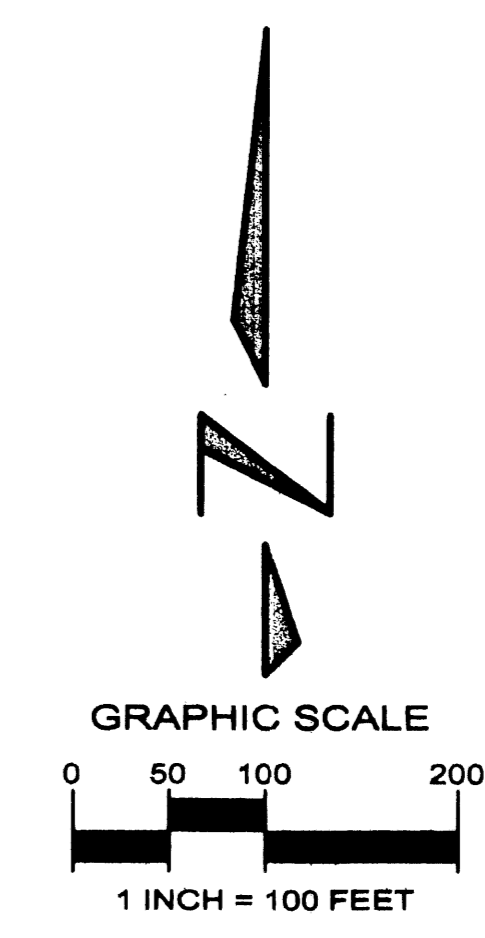
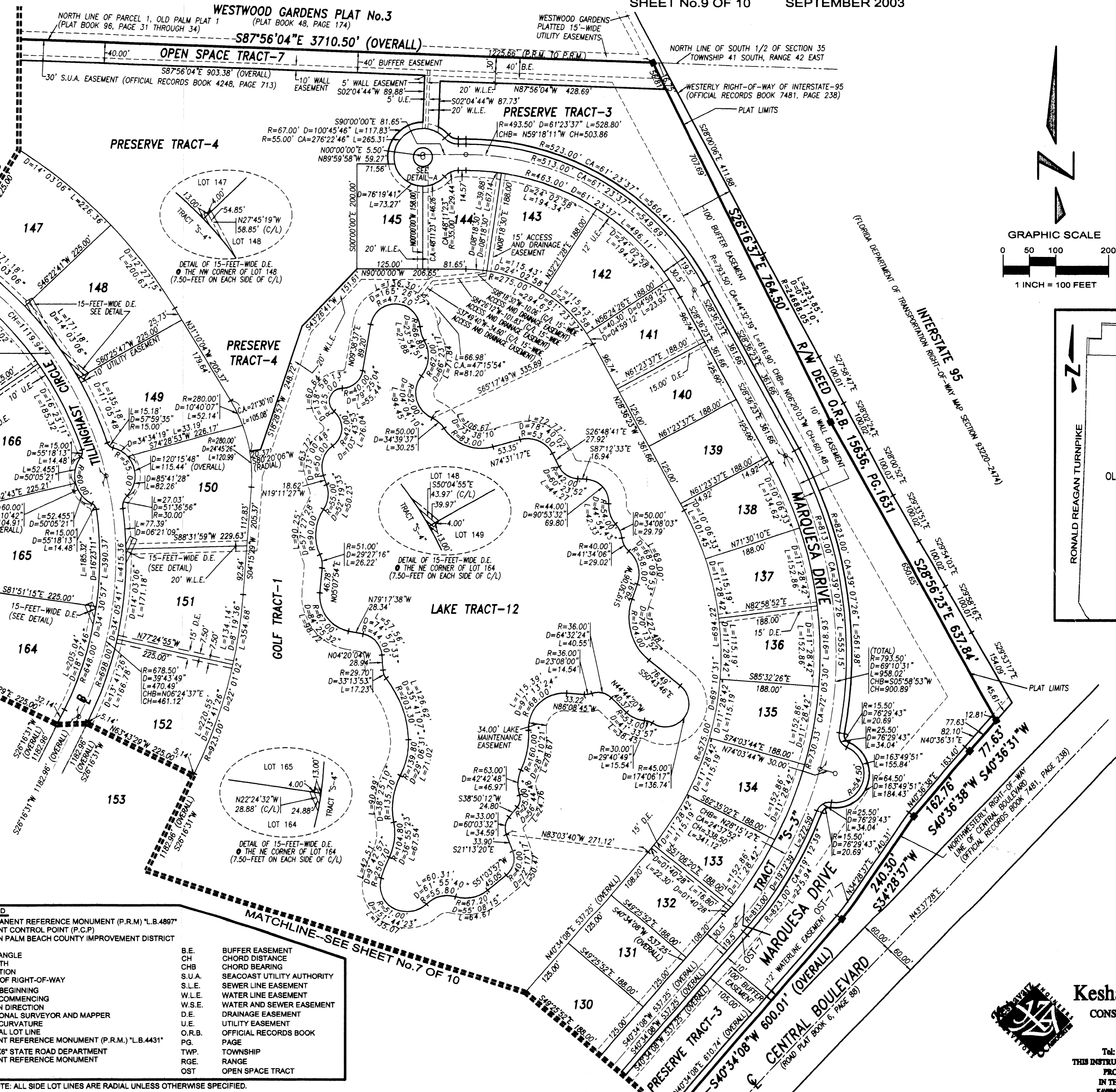
CURVE TABLE

CURVE	RADIUS	DELTA	LENGTH	CHORD BEARING	CHORD LENGTH
C1	835.50'	1°08'11"	16.57'	S69°31'12"W	16.57'
C2	835.50'	2°58'13"	43.31'	S71°34'24"W	43.31'
C3	845.00'	5°01'54"	82.99'	N55°02'39"E	82.98'
C4	924.50'	5°20'05"	86.08'	N55°11'45"E	86.05'
C5	250.00'	47°54'08"	209.01'	S64°14'09"E	202.98'
C6	475.00'	3°32'35"	29.37'	N83°52'17"W	29.37'
C7	269.50'	1°53'17"	8.88'	N27°13'10"E	8.88'
C8	255.50'	13°50'21"	61.71'	S38°19'36"E	61.56'
C9	255.50'	0°54'58"	4.09'	S45°42'15"E	4.09'
C10	4013.00'	3°03'20"	214.01'	N42°05'48"E	213.99'
C11	3879.72'	0°46'05"	52.01'	S39°21'57"W	52.01'
C12	3879.72'	0°35'27"	40.00'	S40°02'42"W	40.00'
C13	225.00'	15°10'32"	59.59'	S38°59'41"E	59.42'
C14	275.00'	14°22'55"	69.03'	S38°35'53"E	68.85'
C15	244.50'	2°35'14"	11.04'	S42°57'04"W	11.04'
C16	269.50'	18°06'02"	85.14'	N66°35'17"E	84.78'
C17	255.50'	14°45'19"	65.80'	S38°47'05"E	65.62'
C18	269.50'	8°00'55"	37.70'	N32°10'15"E	37.67'
C19	84.00'	38°36'48"	56.61'	N15°28'40"W	55.54'
C20	250.00'	27°05'00"	118.17'	N62°05'47"E	117.08'
C21	84.00'	13°22'17"	19.60'	N41°28'12"W	19.56'
C22	84.00'	21°25'22"	31.41'	N58°53'02"W	31.22'
C23	84.00'	7°08'20"	10.47'	S26°50'57"W	10.46'
C24	84.00'	13°28'29"	19.71'	S37°08'21"W	19.66'
C25	84.00'	21°16'21"	31.19'	S54°29'46"W	31.07'
C26	250.00'	22°16'46"	97.21'	N37°24'54"E	96.60'
C27	219.50'	49°21'46"	189.11'	N50°57'24"E	183.31'
C28	222.00'	7°35'57"	29.44'	S24°42'49"W	29.42'
C29	250.00'	49°21'46"	215.39'	N50°57'24"E	208.79'
C30	3993.50'	3°03'20"	212.97'	N42°05'48"E	212.95'
C31	494.50'	1°53'17"	16.29'	N27°13'10"E	16.29'
C32	269.50'	9°54'12"	46.58'	N31°13'37"E	46.52'
C33	678.50'	5°55'35"	70.18'	S13°27'28"W	70.15'
C34	100.00'	18°04'22"	31.54'	N07°23'04"E	31.41'

SYMBOLS LEGEND

■	SET PERMANENT REFERENCE MONUMENT (P.R.M.) "L.B.4887"	B.E.	BUFFER EASEMENT
○	PERMANENT CONTROL POINT (P.C.P.)	CH	CHORD DISTANCE
NPBCID	NORTHERN PALM BEACH COUNTY IMPROVEMENT DISTRICT	CHB	CHORD BEARING
R	RADIUS	S.U.A.	SEACOAST UTILITY AUTHORITY
D	CENTRAL ANGLE	S.L.E.	SEWER LINE EASEMENT
ARC	ARC LENGTH	W.L.E.	WATER LINE EASEMENT
INT	INTERSECTION	W.S.E.	WATER AND SEWER EASEMENT
—	BASELINE OF RIGHT-OF-WAY	D.E.	DRAINAGE EASEMENT
P.O.B.	POINT OF BEGINNING	U.E.	UTILITY EASEMENT
P.O.C.	POINT OF COMMENCING	O.R.B.	OFFICIAL RECORDS BOOK
+	CHANGE IN DIRECTION	PG.	PAGE
+	PROFESSIONAL SURVEYOR AND MAPPER	TWP.	TOWNSHIP
P.S.M.	POINT OF CURVATURE	RGE.	RANGE
NR	NON-RADIAL LOT LINE	OST	OPEN SPACE TRACT
■	PERMANENT REFERENCE MONUMENT (P.R.M.) "L.B.4431"		
■	FOUND 8"x8" STATE ROAD DEPARTMENT PERMANENT REFERENCE MONUMENT		

*NOTE: ALL SIDE LOT LINES ARE RADIAL UNLESS OTHERWISE SPECIFIED.



Keshavarz & Associates, Inc.
CONSULTING ENGINEERS - SURVEYORS
711 N. Dixie Highway, Suite 201
West Palm Beach, Florida 33401
Tel: (561) 689-8600 Fax: (561) 689-7476 LB 4897
THIS INSTRUMENT WAS PREPARED BY MANUEL A. GUTIERREZ, PSM
PROFESSIONAL SURVEYOR AND MAPPER NO. 4102
IN THE OFFICE OF KESHAVARZ & ASSOCIATES, INC.
KAVP0001_OLD PALM PLAT THREE_PLAT THREE Sept 10-21-03 2:40pm