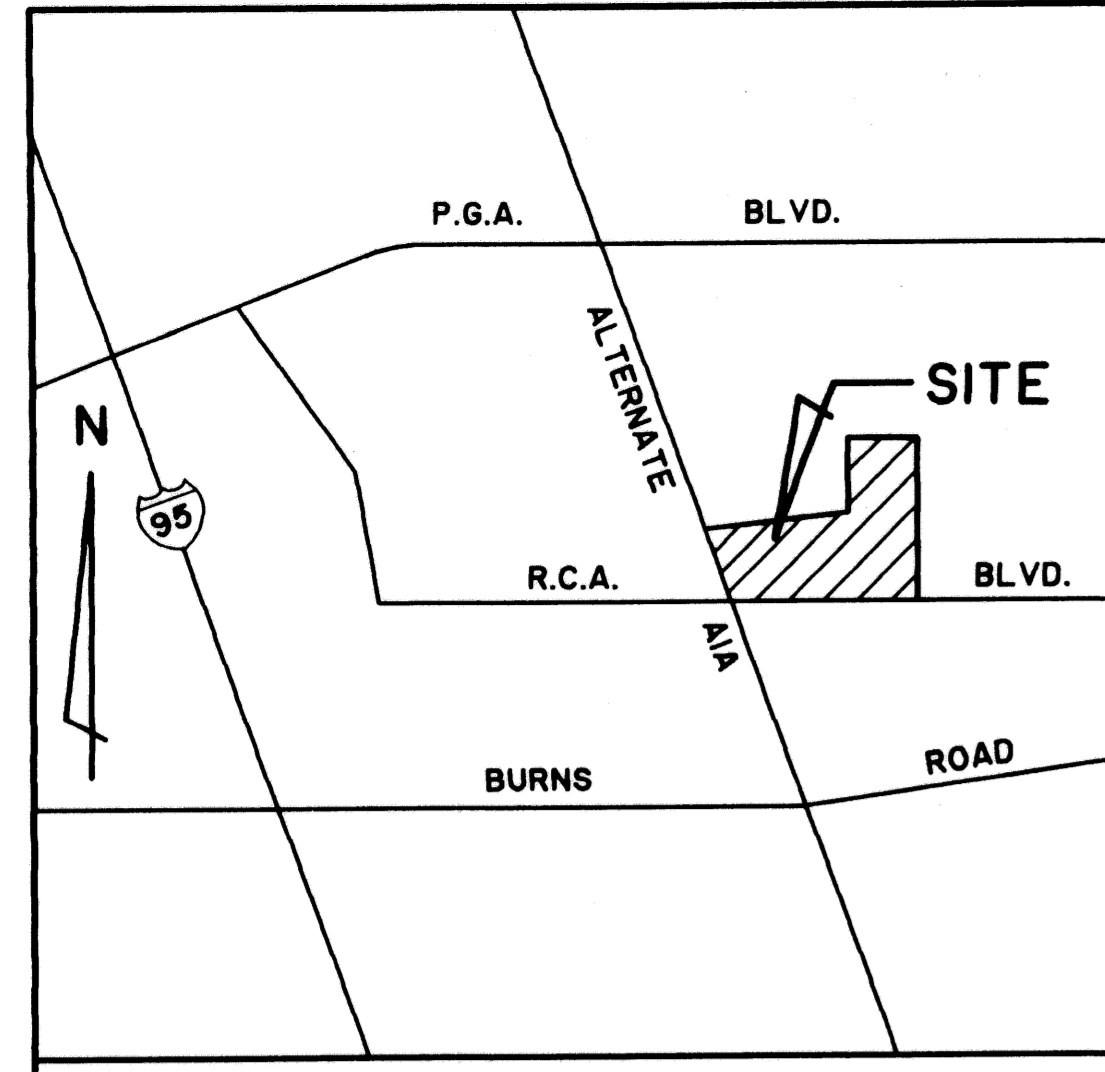


LEGACY PLACE PLAT NO. 2

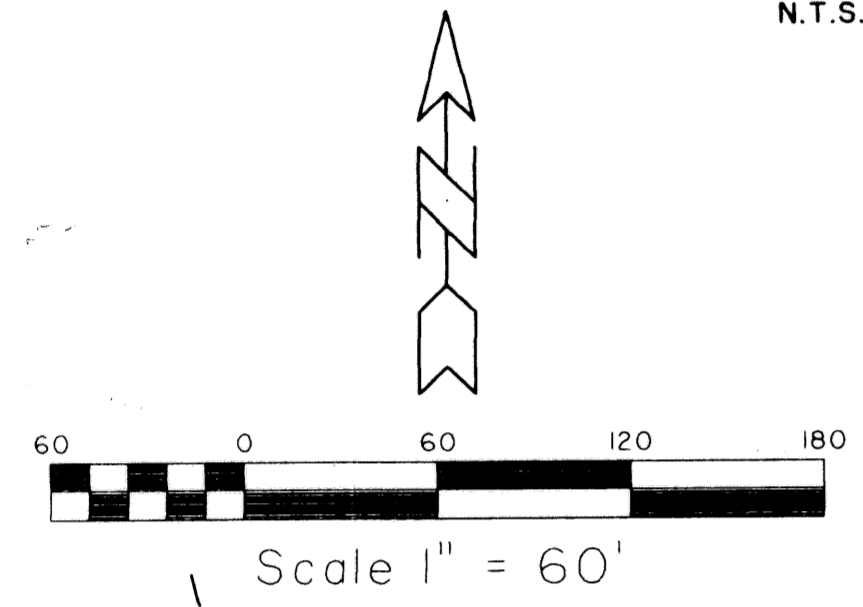
BEING A REPLAT OF A PORTION OF PARCEL I, LEGACY PLACE AS RECORDED IN PLAT BOOK 90, PAGES 119 THROUGH 121, PUBLIC RECORDS OF PALM BEACH COUNTY, FLORIDA, LYING IN SECTION 6, TOWNSHIP 42 SOUTH, RANGE 43 EAST, CITY OF PALM BEACH GARDENS, PALM BEACH COUNTY, FLORIDA.
 OCTOBER, 2003 SHEET 3 OF 3

PARCEL I
 LEGACY PLACE
 (PLAT BOOK 90, PAGES 119 THROUGH 121)

RR.M. OFFSET
 LB 4396



LOCATION MAP
 N.T.S.

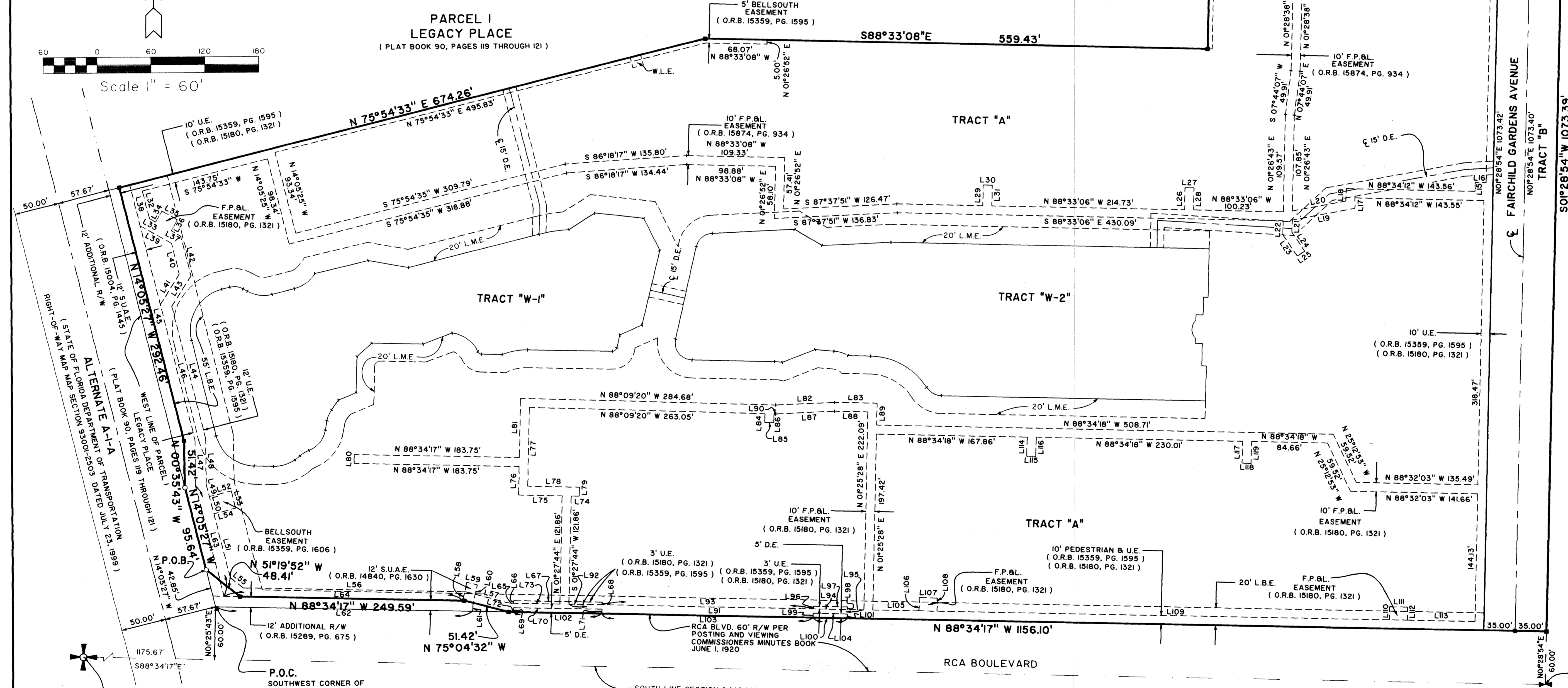


NUMBER	DIRECTION	DISTANCE
L1	N 88°33'08" W	12.00'
L2	N 0°28'54" E	2.00'
L3	N 88°33'08" W	53.26'
L4	S 0°26'52" W	61.19'
L5	S 88°33'08" E	7.50'
L6	N 0°26'52" E	10.00'
L7	S 88°33'08" E	7.50'
L8	N 0°26'52" E	39.50'
L9	N 88°32'34" W	28.00'
L10	N 0°27'26" E	10.00'
L11	N 88°32'34" W	25.99'
L12	S 88°31'51" E	56.99'
L13	N 88°31'51" E	56.99'
L14	N 0°28'09" E	10.00'
L15	N 0°28'54" E	10.00'
L16	N 88°34'12" W	12.00'
L17	N 0°25'48" E	11.76'
L18	S 0°25'48" W	13.65'
L19	S 79°30'49" W	71.06'
L20	N 79°30'49" E	60.84'
L21	S 0°26'43" W	13.33'
L22	N 0°26'43" E	15.53'
L23	N 33°28'00" W	28.88'
L24	N 33°28'00" W	25.73'
L25	S 56°32'00" W	10.00'

NUMBER	DIRECTION	DISTANCE
L26	N 0°26'54" E	24.73'
L27	S 88°33'06" E	10.00'
L28	S 0°26'54" W	24.73'
L29	N 0°26'54" E	23.00'
L30	S 88°33'06" E	10.00'
L31	N 0°26'54" E	23.00'
L32	S 14°05'27" E	31.85'
L33	N 60°33'35" W	7.95'
L34	S 29°26'25" W	14.00'
L35	S 60°33'35" E	20.00'
L36	S 29°26'25" W	14.00'
L37	N 60°33'35" W	12.05'
L38	S 14°05'27" E	47.01'
L39	S 60°33'35" E	40.00'
L40	S 14°05'27" E	36.00'
L41	S 32°22'41" W	40.00'
L42	N 14°05'27" W	46.30'
L43	S 32°22'41" W	40.00'
L44	N 14°05'27" W	152.04'
L45	N 14°05'27" W	293.87'
L46	S 14°05'27" E	155.77'
L47	N 00°35'43" E	51.42'
L48	N 00°35'43" W	51.42'
L49	S 14°05'27" E	13.97'
L50	S 14°05'27" E	20.00'

NUMBER	DIRECTION	DISTANCE
L51	S 14°05'27" E	73.87'
L52	S 75°54'33" W	25.00'
L53	N 14°05'27" W	20.00'
L54	S 75°54'33" W	25.00'
L55	N 5°19'52" W	18.54'
L56	S 88°34'17" E	247.41'
L57	N 75°04'33" W	51.42'
L58	N 12°40'34" E	20.99'
L59	N 77°19'26" W	12.00'
L60	S 12°40'34" W	23.52'
L61	S 0°26'42" W	7.18'
L62	S 88°34'14" E	286.28'
L63	N 14°05'27" W	127.96'
L64	S 88°34'17" E	265.89'
L65	S 88°34'17" E	3.92'
L66	N 0°25'43" E	3.00'
L67	S 88°34'17" E	98.38'
L68	S 88°25'43" W	3.00'
L69	S 0°25'43" W	5.00'
L70	S 88°34'17" E	98.38'
L71	N 0°25'43" E	5.00'
L72	S 88°34'17" E	5.10'
L73	S 88°34'17" E	55.43'
L74	N 88°34'32" W	8.98'
L75	N 88°34'32" W	48.70'

NUMBER	DIRECTION	DISTANCE
L76	N 0°25'28" E	31.64'
L77	N 0°25'28" E	87.88'
L78	N 88°34'32" W	57.68'
L79	N 0°25'28" E	10.00'
L80	N 0°25'43" E	10.00'
L81	S 0°25'28" W	66.32'
L82	N 88°33'08" W	144.53'
L83	N 88°34'32" W	47.44'
L84	N 0°50'40" E	10.00'
L85	N 88°09'20" W	10.00'
L86	N 0°50'40" E	10.00'
L87	S 87°37'05" W	65.44'
L88	N 88°34'32" W	37.11'
L89	N 0°25'28" W	24.67'
L90	N 88°09'20" W	1.93'
L91	N 88°34'17" E	328.76'
L92	S 88°34'17" E	36.86'
L93	S 88°34'17" E	235.64'
L94	S 88°34'17" E	38.00'
L95	S 88°34'17" E	18.26'
L96	N 0°25'43" E	3.00'
L97	S 88°34'17" E	38.00'
L98	N 0°25'43" E	3.00'
L99	N 0°25'43" E	5.00'
L100	S 88°34'17" E	38.00'



NUMBER	DIRECTION	DISTANCE
L101	N 0°25'43" E	5.00'
L102	S 88°34'17" E	98.38'
L103	S 88°34'17" E	235.64'
L104	S 88°34'17" E	38.00'
L105	S 88°34'17" E	51.42'
L106	N 0°25'43" E	15.00'
L107	S 88°34'17" E	20.00'
L108	S 0°25'43" W	15.00'
L109	S 88°34'17" E	504.00'
L110	N 0°25'43" E	15.00'
L111	S 88°34'17" E	20.00'
L112	S 0°25'43" W	15.00'
L113	S 88°34'17" E	75.31'
L114	N 0°25'42" E	21.50'
L115	N 88°34'18" W	10.00'
L116	S 0°25'42" W	21.50'
L117	N 0°25'42" E	24.50'
L118	N 88°34'18" W	10.00'
L119	S 0°25'42" W	24.50'

STATE OF FLORIDA SS
 COUNTY OF PALM BEACH
 THIS PLAT WAS FILED FOR RECORD AT _____
 _____ M. THIS _____ DAY OF _____ 2003
 AND DULY RECORDED IN PLAT BOOK NO. _____
 ON PAGE _____
 DOROTHY H. WILKEN, CLERK OF THE CIRCUIT COURT
 BY _____ DC

NOT PLATTED

SOUTHWEST CORNER
 SECTION 6, TOWNSHIP 42 SOUTH,
 RANGE 43 EAST, PALM BEACH
 COUNTY, FLORIDA.

P.O.C.
 SOUTHWEST CORNER OF
 PARCEL I
 LEGACY PLACE
 (PLAT BOOK 90, PAGES 119 THROUGH 121)

SOUTH LINE SECTION 6/42/43

RCA BLVD. 60' R/W PER
 POSTING AND VIEWING
 COMMISSIONERS MINUTES BOOK
 JUNE 1, 1920

Landmark Surveying & Mapping Inc.
 1850 Forest Hill Boulevard
 Ph. (561) 433-5405 Suite 100 W.P.B. Florida
 LB # 4396

LEGACY PLACE PLAT NO. 2

○ DENOTES NAIL & WASHER
 STAMPED P.R.M. LB 4396