

KING'S ACADEMY AND PALM BEACH COUNTY PARK SITE

A PARCEL OF LAND LYING WITHIN SECTIONS 29 AND 32, TOWNSHIP 43 SOUTH, RANGE 42 EAST, BEING A REPLAT OF PORTIONS OF TRACTS 1, 5, 6, 7, 8, 12, 13, 14, 16, AND 17, AND THE 30' PLATTED ROADS ABUTTING SAID TRACTS, IN BLOCK 2, PALM BEACH FARMS CO. PLAT NO. 3, ACCORDING TO THE PLAT THEREOF, AS RECORDED IN PLAT BOOK 2, PAGES 45 THROUGH 54 OF THE PUBLIC RECORDS, ALL LYING WITHIN SECTIONS 29 AND 32, TOWNSHIP 43 SOUTH, RANGE 42 EAST, PALM BEACH COUNTY, FLORIDA

SHEET 3 OF 5

SEPTEMBER, 2003

NOTE:

COORDINATES SHOWN ARE GRID COORDINATES
DATUM = NAD 83 (1990 ADJUSTMENT)
ZONE = FLORIDA EAST ZONE
LINEAR UNIT = U.S. SURVEY FEET
COORDINATE SYSTEM = 1983 STATE PLANE TRANSVERSE MERCATOR PROJECTION
ALL DISTANCES ARE GROUND
SCALE FACTOR = 1.0000236
NO ROTATION = (GRID BEARING TO PLAT BEARING)

THIS INSTRUMENT PREPARED BY
PERRY C. WHITE, P.S.M. 4213, STATE OF FLORIDA
LAWSON, NOBLE AND WEBB, INC.
ENGINEERS PLANNERS SURVEYORS
420 COLUMBIA DRIVE, SUITE 110
WEST PALM BEACH, FLORIDA 33409
LB-6674

THOUSAND PINES
(P.B. 31, PGS. 233 AND 234)

TRACT 5, BLOCK 2
PALM BEACH FARMS CO. PLAT NO. 3
P.B. 2, PGS. 45-54

TRACT "D"
62.991 ACRES
PARK SITE TRACT

TRACT "B"
41.572 ACRES
PARK SITE TRACT

TRACT "L-4"
(P.B. 88, PGS. 63-70)

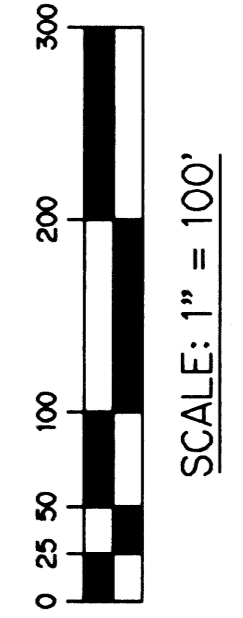
TRACT 7, BLOCK 2
PALM BEACH FARMS
CO. PLAT NO. 3
P.B. 2, PGS. 45-54

TRACT "L-4"
(P.B. 88, PGS. 63-70)

TRACT "D"
62.991 ACRES
PARK SITE TRACT

TRACT "L-4"
(P.B. 88, PGS. 63-70)

TRACT "L-4"
(P.B. 88, PGS. 63-70)

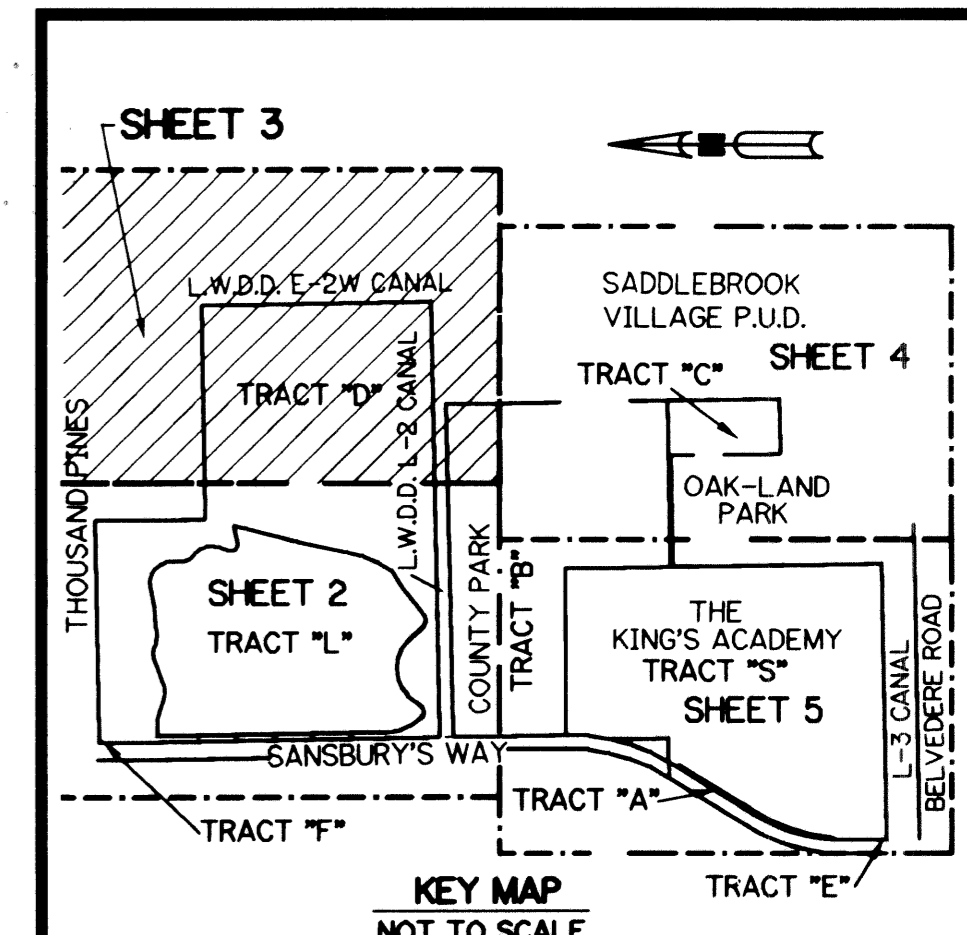


LEGEND:

- - FIND CONCRETE MONUMENT
- - SET PERMANENT REFERENCE MONUMENT, L.B. #6674
- BE-P - PALM BEACH COUNTY BUFFER EASEMENT
- BE-K - THE KING'S ACADEMY BUFFER EASEMENT
- CM - CONCRETE MONUMENT
- C - CENTERLINE
- DB - DEED BOOK
- DE - DRAINAGE EASEMENT
- L.A.E. - LIMITED ACCESS EASEMENT
- L.M.E. - LAKE MAINTENANCE EASEMENT
- L.W.D.D. - LAKE WORTH DRAINAGE DISTRICT
- N.T.S. - NOT TO SCALE
- O.R.B. - OFFICIAL RECORD BOOK
- R.D.&D. - ROAD, DYKE AND DITCH RESERVATION
- ESMT - EASEMENT
- P.B. - PLAT BOOK
- PGS. - PAGES
- P.S.M. - PROFESSIONAL SURVEYOR AND MAPPER
- R/W - RIGHT-OF-WAY
- ST. - SURVEY TIE
- (TOT.) - TOTAL
- U.E. - UTILITY EASEMENT
- P.O.B. - POINT OF BEGINNING
- P.O.C. - POINT OF COMMENCEMENT
- N 737648.0171 - DENOTES STATE PLANE COORDINATES
- E 905258.2326

MATCH LINE "B" - SEE SHEET 4 OF 5

MATCH LINE "A" - SEE SHEET 2 OF 5



SUBDIVISION KING'S ACADEMY AND PALM BEACH COUNTY PARK SITE
BOOK 100 PAGE 107
FLOOD MAP # 150A
FLOOD ZONE 4
ZONING 1P/1SE
QUAD # 40
SE. R. 02. 1257
TAZ 1045
PUD NAME