

BAYWINDS R.P.D. PLAT NO. 12

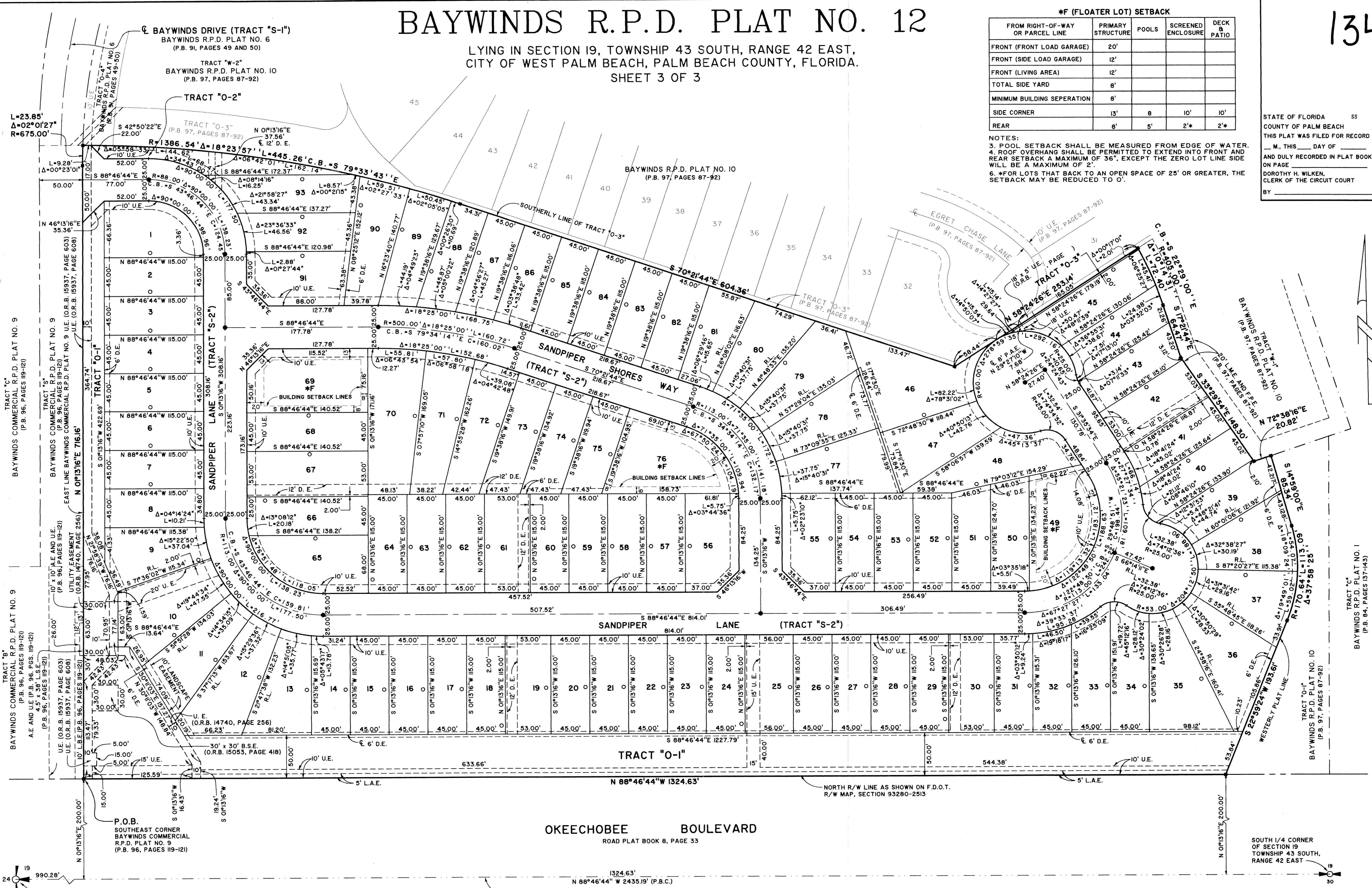
LYING IN SECTION 19, TOWNSHIP 43 SOUTH, RANGE 42 EAST,
CITY OF WEST PALM BEACH, PALM BEACH COUNTY, FLORIDA.
SHEET 3 OF 3

#F (FLOATER LOT) SETBACK					
FROM RIGHT-OF-WAY OR PARCEL LINE	PRIMARY STRUCTURE	POOLS	SCREENED ENCLOSURE	DECK & PATIO	
FRONT (FRONT LOAD GARAGE)	20'				
FRONT (SIDE LOAD GARAGE)	12'				
FRONT (LIVING AREA)	12'				
TOTAL SIDE YARD	8'				
MINIMUM BUILDING SEPERATION	8'				
SIDE CORNER	13'	8'	10'	10'	
REAR	8'	5'	2'	2'	

134

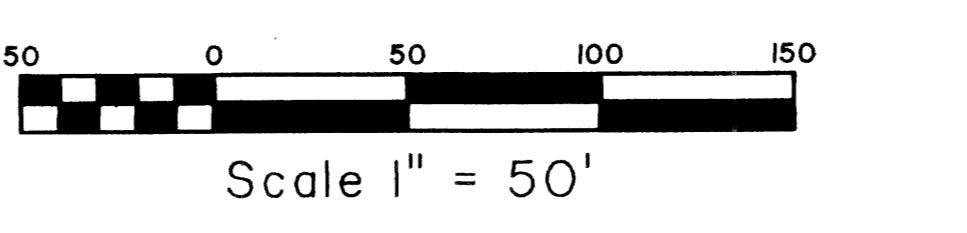
STATE OF FLORIDA SS
COUNTY OF PALM BEACH
THIS PLAT WAS FILED FOR RECORD AT _____
M. THIS _____ DAY OF _____ 2003
AND DULY RECORDED IN PLAT BOOK NO. _____
ON PAGE _____
DOROTHY H. WILKEN,
CLERK OF THE CIRCUIT COURT
BY _____ D.C.

NOTES:
3. POOL SETBACK SHALL BE MEASURED FROM EDGE OF WATER.
4. ROOF OVERHANG SHALL BE PERMITTED TO EXTEND INTO FRONT AND REAR SETBACK A MAXIMUM OF 36", EXCEPT THE ZERO LOT LINE SIDE WILL BE A MAXIMUM OF 2".
6. *FOR LOTS THAT BACK TO AN OPEN SPACE OF 25' OR GREATER, THE SETBACK MAY BE REDUCED TO 0'.



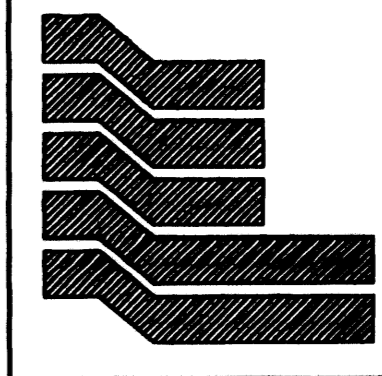
OKEECHOBEE BOULEVARD
ROAD PLAT BOOK 8, PAGE 33

1324.63'
N 88°46'44" W 2435.19' (P.B.C.)
SOUTH LINE OF SECTION 19, TOWNSHIP 43 SOUTH, RANGE 42 EAST



SOUTHWEST CORNER OF SECTION 19,
TOWNSHIP 43 SOUTH, RANGE 42 EAST

SOUTH 1/4 CORNER
OF SECTION 19
TOWNSHIP 43 SOUTH,
RANGE 42 EAST



Landmark Surveying & Mapping Inc.
1850 Forest Hill Boulevard
Ph. (561) 433-5405 Suite 100 W.P.B. Florida
LB # 4396

BAYWINDS R.P.D. PLAT NO. 12
(POD "L")