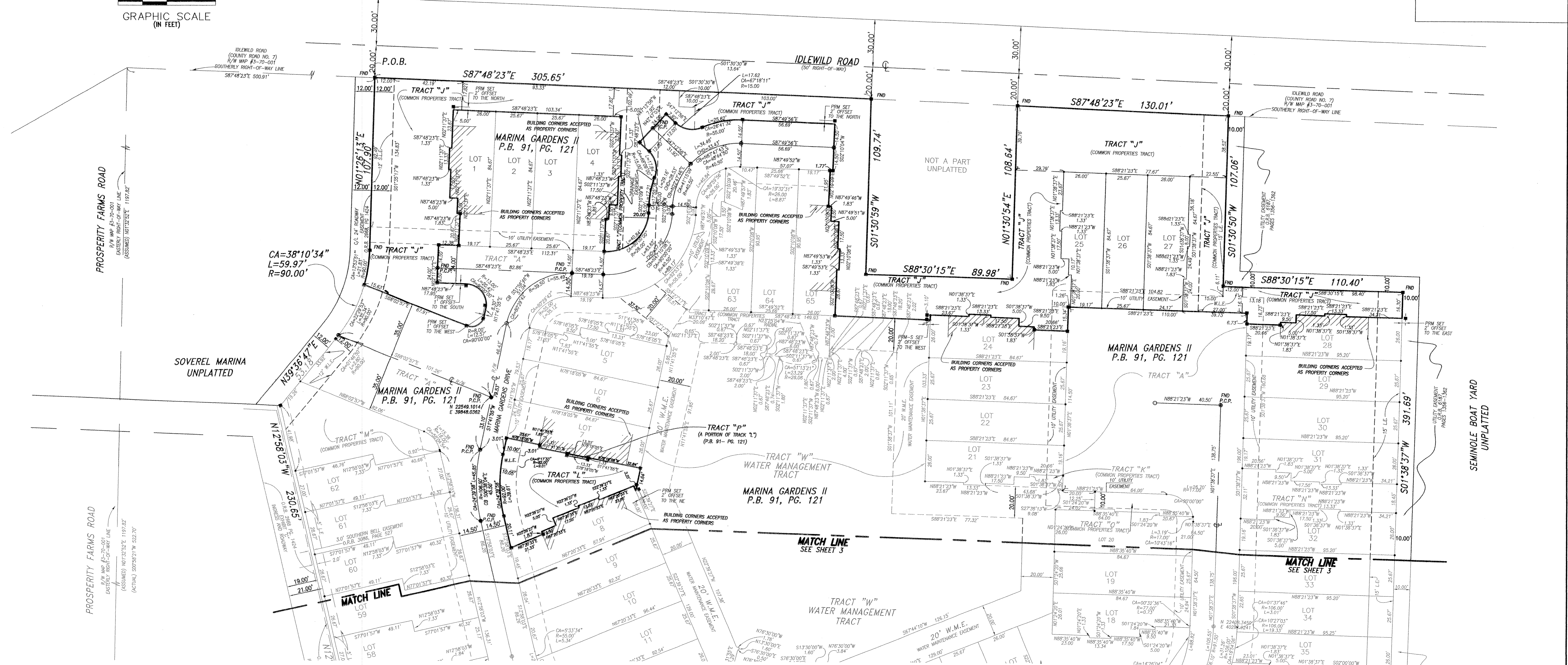
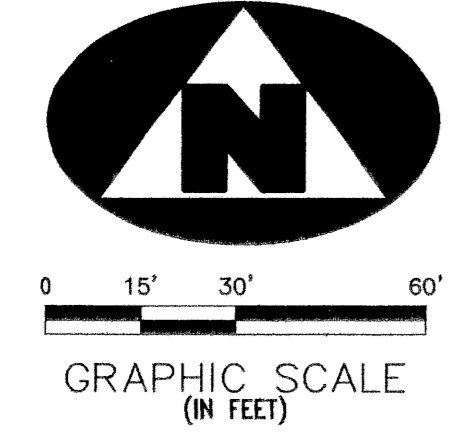


# MARINA GARDENS PLAT III

BEING A REPLAT OF A PORTION OF MARINA GARDENS PLAT II AS RECORDED IN PLAT BOOK 91, PAGE 121, PALM BEACH COUNTY, FLORIDA, LYING IN THE NORTHEAST QUARTER (NE 1/4) OF SECTION 5, TOWNSHIP 42 SOUTH, RANGE 43 EAST, CITY OF PALM BEACH GARDENS, PALM BEACH COUNTY, FLORIDA  
NOVEMBER, 2003

STATE OF FLORIDA  
COUNTY OF PALM BEACH  
THIS PLAT WAS FILED FOR RECORD AT THIS DAY OF A.D., 2003 AND DULY RECORDED IN PLAT BOOK ON PAGES THROUGH  
DOROTHY H. WILKEN  
CLERK OF THE CIRCUIT COURT  
BY: \_\_\_\_\_ DEPUTY CLERK



- LEGEND:**
- |        |   |         |                                |
|--------|---|---------|--------------------------------|
| CB     | CHORD BEARING                                 | PGS     | PAGES                          |
| CA     | CENTRAL ANGLE                                 | CL      | CENTERLINE                     |
| P.C.P. | PERMANENT CONTROL POINT                       | IEE     | INGRESS EGRESS EASEMENT        |
| DE     | DRAINAGE EASEMENT                             | LE      | LANDSCAPE EASEMENT             |
| R      | RADIUS  | PC      | POINT OF CURVATURE             |
| L      | ARC LENGTH                                    | PT      | POINT OF TANGENCY              |
| ECA    | EXCLUSIVE COMMON AREA                         | SLE     | SEWER LINE EASEMENT            |
| Δ      | DELTA ANGLE                                   | R/W     | RIGHT OF WAY                   |
| U.E.   | UTILITY EASEMENT                              | L.B.    | LICENSED BUSINESS              |
|        |   | P.S.&M. | PROFESSIONAL SURVEYOR & MAPPER |
|        |   | PRM     | PERMANENT REFERENCE MONUMENT   |
| •      | 4x4 CONCRETE MONUMENT STAMPED P.R.M., LB 6770 | P.O.C.  | POINT OF COMMENCEMENT          |
| W.L.   | WATER LINE EASEMENT                           | P.O.B.  | POINT OF BEGINNING             |
| P.B.   | PLAT BOOK                                     | •       | SET IRON ROD AND CAP (LB 6770) |
|        |   | O.R.B.  | OFFICIAL RECORD BOOK           |

**MARINA GARDENS PLAT III**

CARNEY-NEARNS, INC.  
188770

11911 U.S. HIGHWAY 1, SUITE 120  
PALM BEACH GARDENS, FL 33408  
TEL: (561) 962-1428  
FAX: (561) 962-1428

3650 BROWNAVE BOULEVARD, SUITE 200  
MIAMI, FL 33133  
TEL: (305) 576-9999  
FAX: (305) 576-9950

4101 N. ANDREWS AVE., SUITE 213  
FORT LAUDERDALE, FL 33308  
TEL: (954) 586-0800  
FAX: (954) 586-3924

FIELD	PROJ. # 99-024	F.B.	PG.
OFFICE JEK/JLG	DATE: 8-12-03	DWG. NO. COVER	SCALE: 1"=30'
C'DK: J.B.M.	REF:	SHEET: 2 of 3	