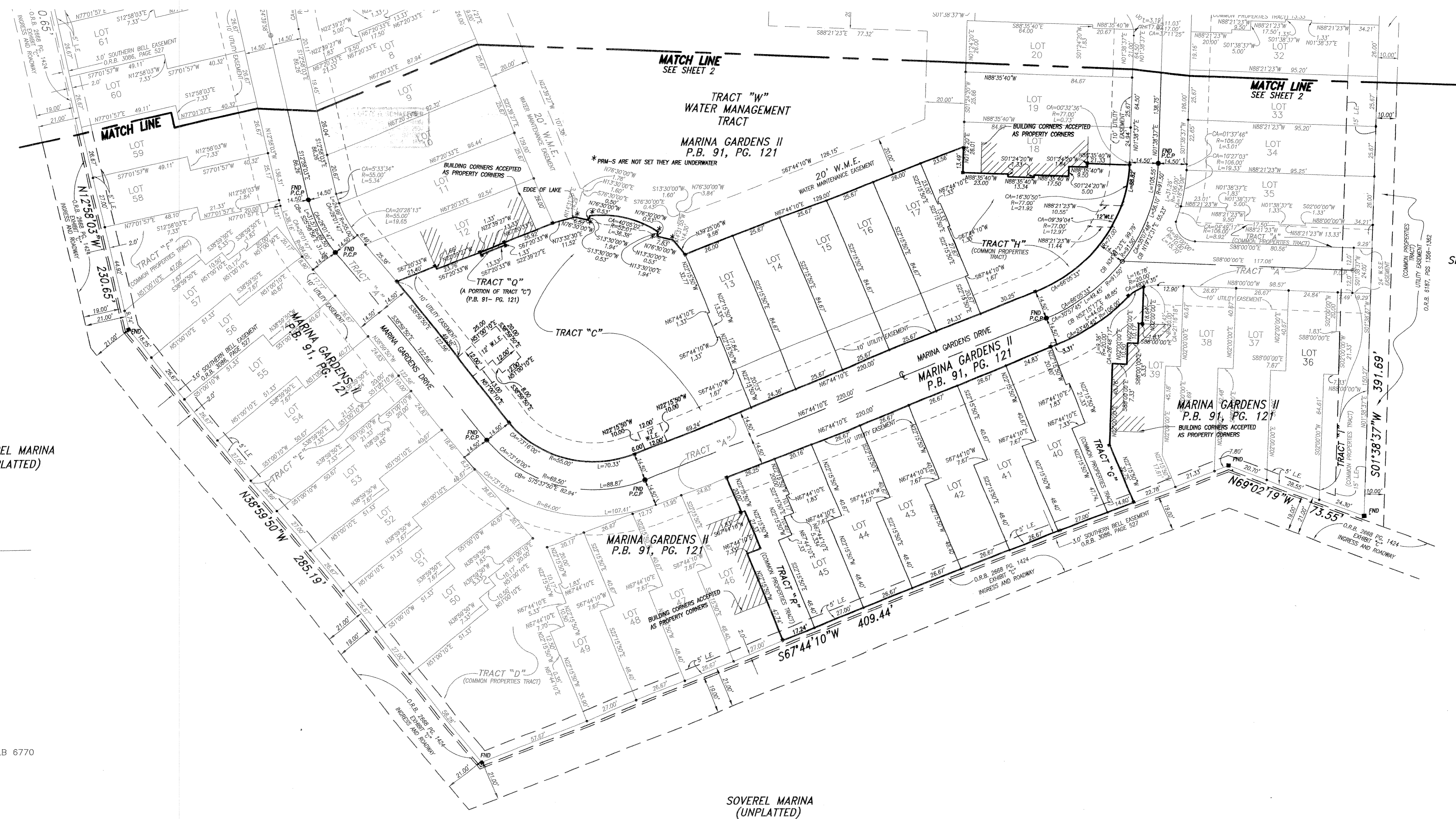
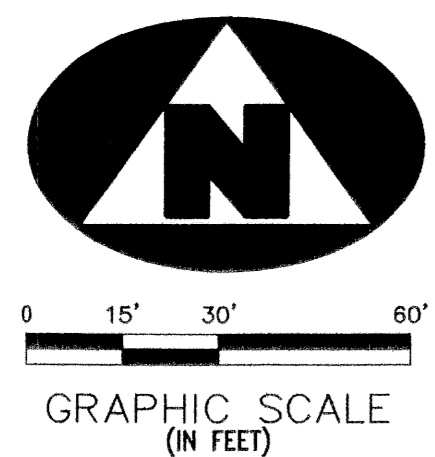


MARINA GARDENS PLAT III

BEING A REPLAT OF A PORTION OF MARINA GARDENS PLAT II AS RECORDED IN PLAT BOOK 91, PAGE 121, PALM BEACH COUNTY, FLORIDA, LYING IN THE NORTHEAST QUARTER (NE 1/4) OF SECTION 5, TOWNSHIP 42 SOUTH, RANGE 43 EAST, CITY OF PALM BEACH GARDENS, PALM BEACH COUNTY, FLORIDA
NOVEMBER, 2003

STATE OF FLORIDA }
COUNTY OF PALM BEACH }
THIS PLAT WAS FILED FOR RECORD AT _____ THIS _____ DAY OF _____ A.D., 2003 AND DULY RECORDED IN PLAT BOOK _____ ON PAGES _____ THROUGH _____
DOROTHY H. WILKEN
CLERK OF THE CIRCUIT COURT
BY: _____ DEPUTY CLERK



PROSPERITY FARMS ROAD

P.O.C.

SOVEREL MARINA (UNPLATTED)

P.G.A. BOULEVARD
NORTHERLY RIGHT-OF-WAY LINE
(P.B. 5 PG.109, 109)

SEMINOLE BOAT YARD (UNPLATTED)

- LEGEND:**
- CB CHORD BEARING
 - CA CENTRAL ANGLE
 - P.C.P. PERMANENT CONTROL POINT
 - DE DRAINAGE EASEMENT
 - R RADIUS
 - L ARC LENGTH
 - ECA EXCLUSIVE COMMON AREA
 - Δ DELTA ANGLE
 - U.E. UTILITY EASEMENT
 - 4x4 CONCRETE MONUMENT STAMPED P.R.M., LB 6770
 - WLE WATER LINE EASEMENT
 - P.B. PLAT BOOK
 - PGS PAGES
 - Ⓞ CENTERLINE
 - IEE INGRESS EGRESS EASEMENT
 - LE LANDSCAPE EASEMENT
 - PC POINT OF CURVATURE
 - PT POINT OF TANGENCY
 - SLE SEWER LINE EASEMENT
 - R/W RIGHT OF WAY
 - L.B. LICENSED BUSINESS
 - P.S.&M. PROFESSIONAL SURVEYOR & MAPPER
 - PRM PERMANENT REFERENCE MONUMENT
 - P.O.C. POINT OF COMMENCEMENT
 - P.O.B. POINT OF BEGINNING
 - SET IRON ROD AND CAP (LB 6770)
 - O.R.B. OFFICIAL RECORD BOOK

MARINA GARDENS PLAT III

CARNEY-NEUHUS, INC.
SBR70

11011 U.S. HIGHWAY 1, SUITE 130 PALM BEACH GARDENS, FL 33408 TEL: (561) 852-1428 FAX: (561) 852-1428
3050 BISCAYNE BOULEVARD, SUITE 200 MIAMI, FL 33137 TEL: (305) 778-9990 FAX: (305) 778-9992
4101 N. ANDREWS AVE., SUITE 213 FORT LAUDERDALE, FL 33309 TEL: (954) 565-0530 FAX: (954) 565-0524

FIELD	PROJ. # 99-024	F.B.	PG.
OFFICE JEK/JLG	DATE: 8-12-03	DWG. NO. COVER	SCALE: 1"=30'
C'KD: J.B.M.	REF:	SHEET:	3 of 3