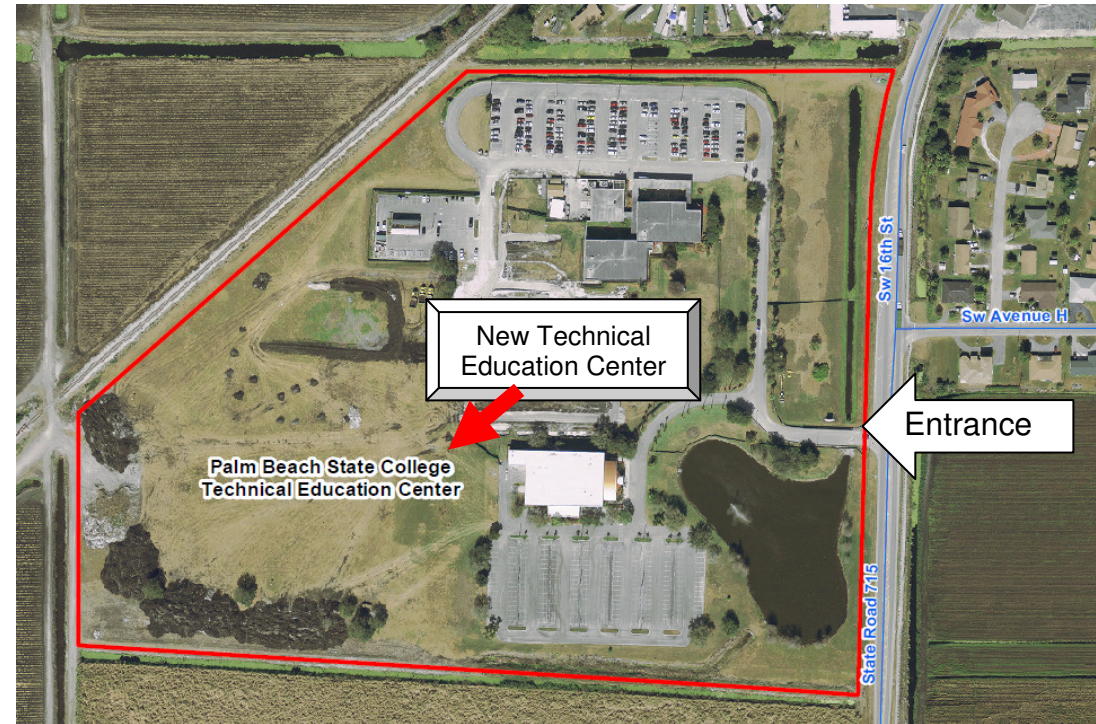
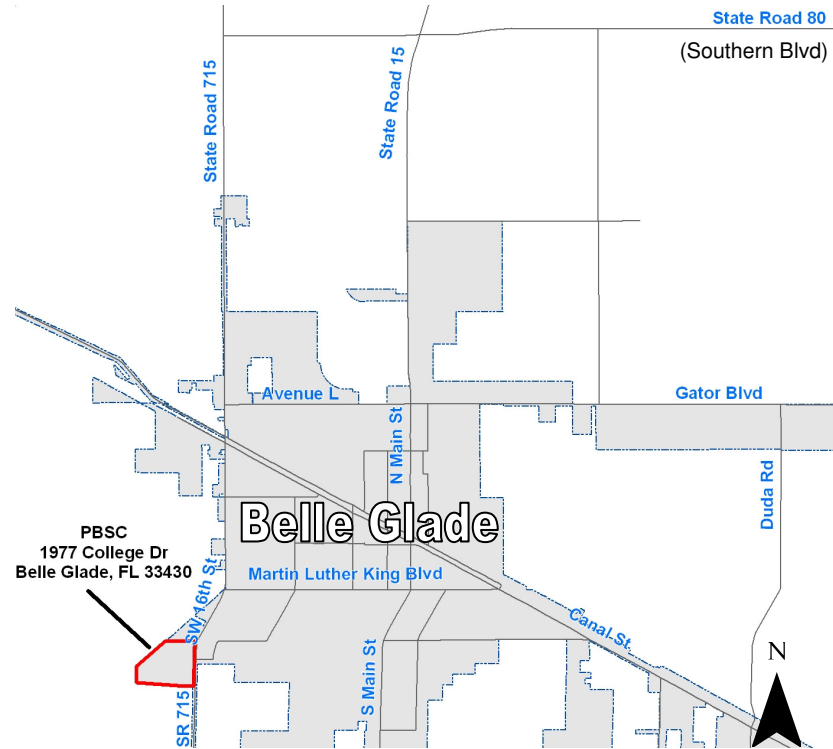


**2011 Evaluation and Appraisal Report**  
**Major Issues Meeting - Future of the Glades**  
**Palm Beach State College, 1977 College Drive, Belle Glade**  
Thursday, October 14, 2010, 6:00 PM – 8:00 PM



**From I-95:**

Proceed west on Southern Blvd. (State Road 80) approximately 40 miles until you reach Belle Glade. At the first traffic light, continue straight ahead. At the caution light, turn left onto State Road 715 and continue through the business area for 3.5 miles. The College is on the right. The trip takes approximately 55 minutes.

**From the Florida Turnpike:**

Exit Southern Blvd. proceed approximately 40 miles until you reach Belle Glade. At the first traffic light, continue straight ahead. At the caution light, turn left onto State Road 715 and continue through the business area for 3.5 miles. The College is on the right. The trip takes approximately 45 minutes.