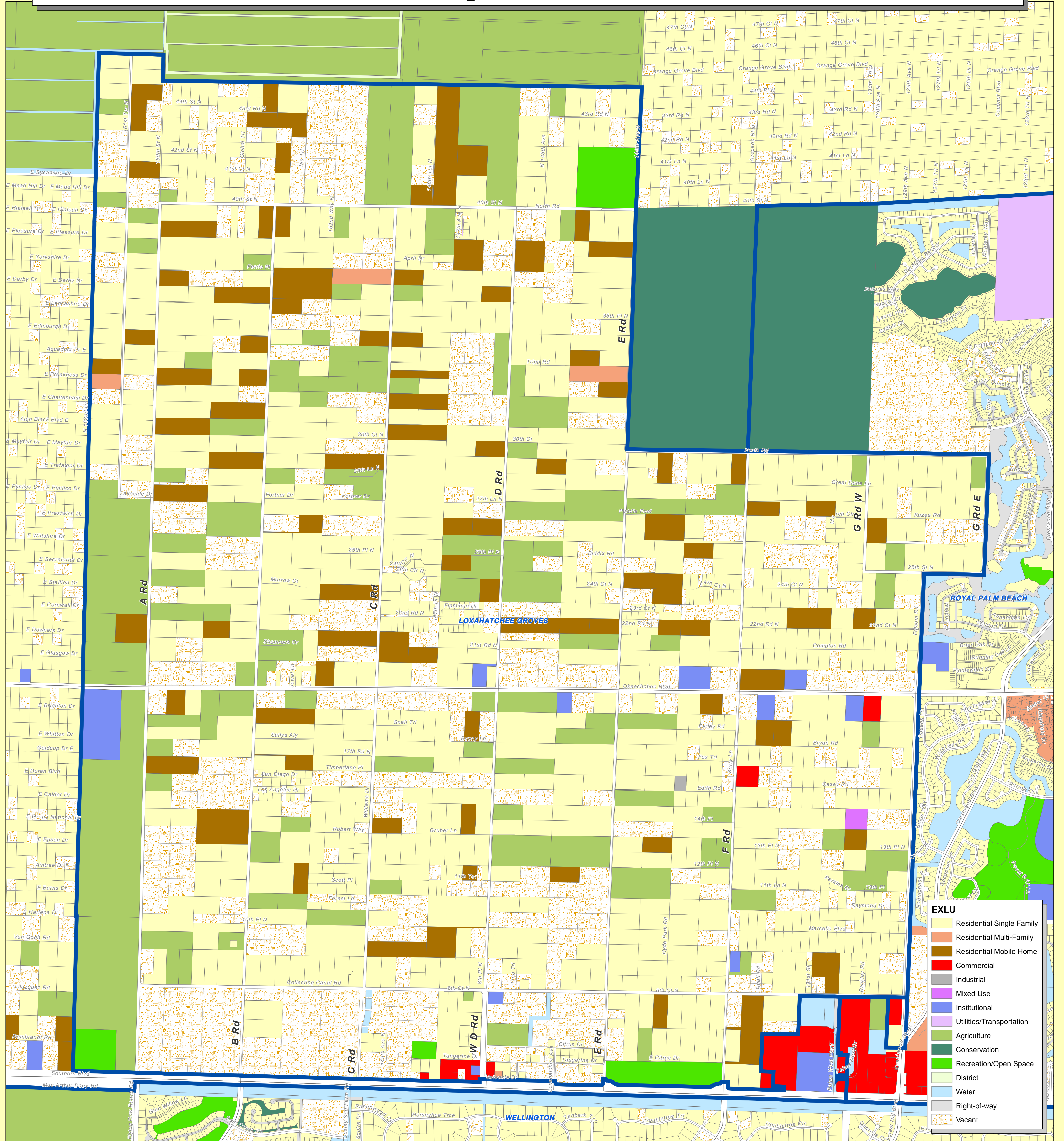


# Loxatchee Groves

## Existing Land Use

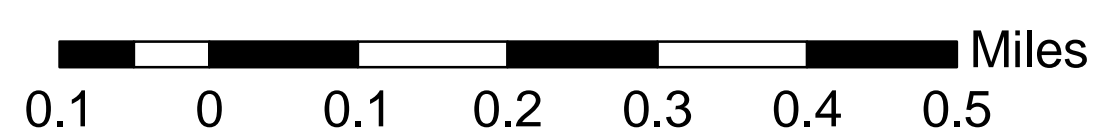


**EXLU**

Yellow	Residential Single Family
Orange	Residential Multi-Family
Brown	Residential Mobile Home
Red	Commercial
Grey	Industrial
Purple	Mixed Use
Light Blue	Utilities/Transportation
Green	Agriculture
Dark Green	Conservation
Light Green	Recreation/Open Space
Blue	Water
Grey	Right-of-way
White	Vacant

Date: 11/29/06  
 Contact: Patricia Behn  
 Filename: N:\DVP\Jenna  
 FY09\LoxGrove\EXLU2006

Note: Map is not official, for presentations purposes only.



- Municipal Boundary
- Roads
- Secondary
- Tertiary

**Planning, Zoning  
& Building**  
 2300 N Jog Rd  
 West Palm Beach, FL 33411  
 Phone (561) 233-5300

