

APPENDIX A

STA	ROAD	FROM	TO	LANES	DAILY TRAFFIC VOLUMES					2012 DAILY			2012 AM PEAK HOUR			2012 PM PEAK HOUR		
					2007	2008	2009	2010	2011	DATE	VOL	GR	2-WAY	NB/EB	SB/WB	2-WAY	NB/EB	SB/WB
3605	BELVEDERE RD	Congress Ave	Australian Ave	6D	42251	41671	36772	32739	30986	2/21/2012	32334	-4.20%	2102	1256	884	2639	1245	1401
3213	BELVEDERE RD	Australian Ave	I-95	6D	34099	36558	34305	33640	29243	2/15/2012	30168	-4.19%	2329	1384	974	2565	1318	1254
3311	BELVEDERE RD	I-95	Parker Ave	4D	30057	29229	27495	26896	25311	2/15/2012	26343	-1.42%	2363	1429	934	2327	972	1355
3821	BELVEDERE RD	Parker Ave	Dixie Hwy	4D	18400	17788	17052	16040	15658	2/15/2012	16458	-1.17%	1397	450	960	1411	889	525
3416	BENOIST FARMS RD	Southern Blvd	Belvedere Rd	2	4767	4900	3979	4547	4509	2/14/2012	4912	7.27%	402	234	172	377	175	202
3456	BENOIST FARMS RD	Belvedere Rd	Okeechobee Bl	2	3999	4425	4474	4685	5149	2/1/2012	5531	7.33%	505	269	244	406	228	206
3434	BIG BLUE TRACF	South Shore Blvd	Wellington Trace	2	12641	13715	12706	12405	12449	1/30/2012	11860	-2.27%	910	480	456	1079	481	609
● 3422	BIG BLUE TRACF	Wellington Trace	Southern Blvd	2	10829	11216	11521	11579	12014	1/30/2012	11407	-0.33%	982	694	337	1044	324	747
● 3436	BINKS FOREST DR	Greensview Shores Bl	Southern Blvd	4D	9005	8620	9067	8336	9186	1/30/2012	9114	0.17%	991	666	344	804	382	426
2601	BLUE HERON BLVD	Bee Line Hwy	Military Tr	4D	17723	17743	17042	18029	19533	1/30/2012	18506	2.79%	1581	769	825	1489	668	837
2211	BLUE HERON BLVD	Military Tr	I-95	6D	33246	33600	30838	33088	34093	1/23/2012	32622	1.89%	2626	1379	1273	2644	1245	1444
2311	BLUE HERON BLVD	I-95	Congress Ave	6D	50938	41889	42353	51117	44710	1/23/2012	46320	3.03%	3704	2250	1457	3742	1468	2327
2607	BLUE HERON BLVD	Congress Ave	Australian Ave	6D	37483	33234	32599	34095	33656	1/11/2012	32149	-0.46%	2494	1485	1090	2441	1085	1395
2823	BLUE HERON BLVD	Australian Ave	Old Dixie Hwy	6D	32147	32600	27437	29652	28888	1/11/2012	27686	0.30%	1996	1050	946	2118	1040	1075
2811	BLUE HERON BLVD	Old Dixie Hwy	US 1	5	21633	18912	18446	20196		1/17/2012	19045	1.07%	1270	724	556	1485	703	782
6832	BOCA RATON BLVD	Palmetto Park Rd	Glades Rd	4D	10490	9817	8600	8494	8691	1/11/2012	9070	1.79%	847	372	479	857	562	338
6822	BOCA RATON BLVD	Glades Rd	20th St NW	4D	19285	18495	16764	15939	16453	1/11/2012	18188	2.75%	1395	712	721	1698	1088	670
6818	BOCA RATON BLVD	20th St NW	28th St NW	5	20720	17676	17102	16509	16936	2/1/2012	17356	0.49%	1505	839	698	1708	930	794
6886	BOCA RATON BLVD	28th St NW	Yamato Rd	4D	27074	27493	21594	17861	17851	1/25/2012	17927	-6.02%	1521	963	665	1665	705	1004
6884	BOCA RATON BLVD	Yamato Rd	Clint Moore Rd	2	18758	18009	15521	16732	18211	1/25/2012	18144	5.34%	1717	1167	604	1690	886	804
6882	BOCA RATON BLVD	Clint Moore Rd	Hidden Valley Blvd	2	13033	12736	11200	11454	11579	1/25/2012	12939	4.93%	1222	906	434	1206	461	829
6302	BOCA RATON BLVD	Hidden Valley Blvd	C-15 Canal	2	4550	4419	3611	3804	3853	1/25/2012	3729	1.08%	312	178	138	384	154	246

STA	ROAD	FROM	TO	LANES	DAILY TRAFFIC VOLUMES					2012 DAILY			2012 AM PEAK HOUR			2012 PM PEAK HOUR		
					2007	2008	2009	2010	2011	DATE	VOL	GR	2-WAY	NB/EB	SB/WB	2-WAY	NB/EB	SB/WB
2402	ROYAL PALM BEACH BL	M Canal	Orange Blvd	2	15304	14616	16572	15825	15912	2/15/2012	15740	-1.70%	1301	458	880	1463	876	624
3819	ROYAL PALM BRIDGE	County Rd	Olive Ave	4D	29634	21565	20101	20023	22300	2/28/2012	21084	1.60%	1626	1130	496	1832	609	1179
3833	ROYAL POINCIANA WAY	N Flagler Dr	Royal Poinciana Wy	4	25700	25400	12600	15122										
3414	SANSBURY'S WAY	Southern Blvd	Belvedere Rd	2	7254	8149	7281	9200	9091	3/12/2012	9556	9.49%	768	351	434	941	474	507
3454	SANSBURY'S WAY	Belvedere Rd	Okeechobee Bl	2	6744	6613	5835	7691	6170	2/15/2012	10427	21.35%	935	609	347	990	475	531
5802	SEACREST BLVD	23rd Ave	Woolbright Rd	5	21069	20816	20784	21073	20290	2/1/2012	20933	0.24%	1689	772	917	1771	1003	835
5800	SEACREST BLVD	Woolbright Rd	Boynton Beach Blvd	5	15877	14976	12582	13982	12717	2/27/2012	12263	-0.85%	843	405	440	1035	602	448
5302	SEACREST BLVD	Boynton Beach Blvd	Gateway Blvd	5	15088	15071	13294	12733	11274	2/27/2012	11566	-4.54%	779	335	444	988	579	440
4806	SEACREST BLVD	Gateway Blvd	Hypoluxo Rd	5	14002	12562	12072	11637	11302	3/12/2012	12101	0.08%	643	401	253	1143	642	512
● 3420	SEMINOLE PRATT-WHIT	Southern Blvd	Okeechobee Blvd	2	15492	14222	12632	14351	13133									
3424	SEMINOLE PRATT-WHIT	Okeechobee Blvd	Sycamore Dr E	2	21273	18706	18051	17383										
3442	SEMINOLE PRATT-WHIT	Sycamore Dr E	60TH ST N	2	17100	15809	19149	16620	16094	1/17/2012	15382	-7.04%	1406	785	731	1364	737	629
2408	SEMINOLE PRATT-WHIT	60TH ST N	Orange Bl	2	14310	14727	15620	14772	12224	1/17/2012	12152	-8.03%	1012	515	561	1105	456	649
2406	SEMINOLE PRATT-WHIT	Orange Bl	Northlake Blvd	2	11563	11199	11736	11076	10411	1/17/2012	10118	-4.82%	858	413	459	896	438	469
6904	SHERATON WAY	Glades Rd	NW 19 ST	2	4693	4286	3712	3991	3734	2/29/2012	10271	40.39%	887	507	380	933	485	448
4644	SHERWOOD FOREST BL	Lake Worth Rd	10th Ave N	2	7095	6790	6950	5767	6068	2/15/2012	6461	-2.40%	407	113	296	542	307	258
4654	SHERWOOD FOREST BL	10th Ave N	Cresthaven Blvd	2	9129	8073	7971	7736	7794	2/15/2012	7909	-0.26%	570	195	375	698	392	326
4200	SHERWOOD FOREST BL	Cresthaven Blvd	Forest Hill Blvd	2	7323	7354	6447	6348	6576	2/15/2012	6431	-0.08%	470	210	262	587	258	333
2615	SILVER BEACH RD	Congress Ave	Old Dixie Hwy	2	13197	14235	14048	13508	12629	1/30/2012	12250	-4.46%	839	431	423	1122	554	587
2807	SILVER BEACH RD	Old Dixie Hwy	US-1	2	13166	12823	12265	11591	12068	1/11/2012	10996	-3.58%	675	332	343	1011	519	492
3418	SKEES RD	Okeechobee Bl	Belvedere Rd	2	5398	5102	4858	4956	4436	2/15/2012	4743	-0.80%	377	216	165	392	231	167
3446	SOUTH SHORE DR	Lake Worth Rd	Greenview Shores Bl	2	16746	16711	14176	16271										

STA	ROAD	FROM	TO	LANES	DAILY TRAFFIC VOLUMES					2012 DAILY			2012 AM PEAK HOUR			2012 PM PEAK HOUR		
					2007	2008	2009	2010	2011	DATE	VOL	GR	2-WAY	NB/EB	SB/WB	2-WAY	NB/EB	SB/WB
3429	SOUTH SHORE DR	Greenview Shores Bl	Big Blue Trace	4D	19744	19087	18028	18470	19147	2/21/2012	19657	2.93%	1657	638	1089	1620	905	722
3421	SOUTH SHORE DR	Big Blue Trace	Forest Hill Blvd	4D	26556	25227	22287	23838	25586	2/13/2012	25823	5.03%	1748	1068	683	2218	1081	1148
• 3101	SOUTHERN BLVD	CR 880	Lion Country Safari	4D	17190	16198	16585	19702	15140	1/23/2012	13813	-5.91%	1229	378	876	1209	823	386
• 3467	SOUTHERN BLVD	Lion Country Safari	Seminole Pratt Whitney Rd	4D	23814	21535	23112	22490	18663	3/12/2012	18500	-7.15%	1580	581	1044	1506	1044	463
• 3443	SOUTHERN BLVD	Seminole Pratt Whitney Rd	Binks Forest Drive	4D	29807	28605	32183	28630	27143	2/27/2012	25048	-8.02%	1968	1091	938	2050	1091	1007
• 3431	SOUTHERN BLVD	Binks Forest Drive	Big Blue Trace	4D	32664	30997	32120	35305	31051	2/27/2012	33763	1.68%	2928	1544	1564	2954	1553	1463
• 3413	SOUTHERN BLVD	Big Blue Trace	Forest Hill/Crestwood	4D	44382	42116	43777	46881	43698	2/26/2012	42972	-0.62%	3478	1913	1565	3465	1670	1845
• 3417	SOUTHERN BLVD	Forest Hill/Crestwood	Cypress Head	6D	46087	48632	52215	54303	54813	2/27/2012	53757	0.97%	4298	2863	1486	4407	1892	2699
• 3437	SOUTHERN BLVD	Cypress Head	Royal Palm Beach Blvd	6D	46826	46769	51088	53158	55124	2/27/2012	52734	1.06%	4191	2776	1467	4425	1862	2667
• 3405	SOUTHERN BLVD	Royal Palm Beach Blvd	Lamstein Ln	8D	50600	50500	61396											
• 3409	SOUTHERN BLVD	Lamstein Ln	SR-7	8D	52000	51800	61795	65897	61903	2/22/2012	58568	-1.77%	4452	3178	1570	4805	2297	2705
3415	SOUTHERN BLVD	SR 7	Sansbury's Way	8D	42900	43500	53262	61147	60612	2/22/2012	61843	5.11%	5130	3344	1830	4897	2083	2936
3105	SOUTHERN BLVD	Sansbury's Way	Pike Rd	8D	46545	47700	54803	62010	63607	2/21/2012	64205	5.42%	5350	3498	1908	5410	2090	3348
3215	SOUTHERN BLVD	Pike Rd	Fla Turnpike Entrance	8D	52700	54700	55700	56749										
3223	SOUTHERN BLVD	Fla Turnpike Entrance	Jog Rd	8D	40685	42908	50518	56858	56164	2/22/2012	64470	8.47%	5726	3671	2093	5642	2209	3533
3643	SOUTHERN BLVD	Jog Rd	Haverhill Rd	8D	43708	46081	56391	61432	64391	2/22/2012	71670	8.32%	6972	4744	2228	6451	2360	4118
3635	SOUTHERN BLVD	Haverhill Rd	Military Tr	8D	36020	46959	45467	64446	65982									
3637	SOUTHERN BLVD	Military Tr	Kirk Rd	8D	42293	43800	48376	67701	58981	4/2/2012	64992	10.34%	6001	4121	1880	5749	2041	3724
3673	SOUTHERN BLVD	Kirk Rd	Congress Ave	8D	42504	43264	50713	58752	59687	3/14/2012	62292	7.10%	5704	4001	1748	5441	1943	3512
3639	SOUTHERN BLVD	Congress Ave SB	Congress Ave NB	8D	38664													
3675	SOUTHERN BLVD	Congress Ave NB	Gem Lake	8D	38664		39000	58349										
3217	SOUTHERN BLVD	Gem Lake	I-95	8D	42475	40378	47271	51969	57619	3/14/2012	59277	7.84%	5151	3133	2018	5223	2053	3170

SIGNAL_ID	E-W STREET	N-S STREET	DATE	TIME	NBU	NBL	NBT	NBR	SBU	SBL	SBT	SBR	EBU	EBL	EBT	EBR	WBU	WBL	WBT	WBR	TOTAL
27685	OKEECHOBEE BLVD	ROYAL PALM BEACH	12/6/2010	2:45 PM	0	124	3	72	0	7	2	9	7	17	1213	109	0	109	1574	19	3265
27685	OKEECHOBEE BLVD	ROYAL PALM BEACH	12/6/2010	5:00 PM	1	31	0	30	0	17	1	7	2	8	1387	52	4	55	2655	39	4289
27725	OKEECHOBEE BLVD	SANSBURY WAY	12/9/2010	7:15 AM	0	56	23	168	0	64	40	14	12	28	2435	185	0	132	1163	40	4360
27725	OKEECHOBEE BLVD	SANSBURY WAY	2/3/2011	7:15 AM	0	31	29	189	0	70	38	22	8	28	2654	188	2	136	960	38	4393
27725	OKEECHOBEE BLVD	SANSBURY WAY	1/13/2009	7:15 AM	0	35	22	170	0	76	60	15	7	29	2432	185	6	119	1037	42	4235
27725	OKEECHOBEE BLVD	SANSBURY WAY	12/12/2007	7:00 AM	0	50	27	160	0	59	51	18	9	36	2978	140	6	87	1100	26	4747
27725	OKEECHOBEE BLVD	SANSBURY WAY	2/3/2011	5:00 PM	0	120	88	135	0	70	30	28	28	71	1205	64	19	145	2657	127	4787
27725	OKEECHOBEE BLVD	SANSBURY WAY	12/9/2010	5:00 PM	1	124	95	151	0	67	26	34	23	64	1167	63	3	169	2865	127	4979
27725	OKEECHOBEE BLVD	SANSBURY WAY	1/13/2009	5:00 PM	0	110	87	100	0	77	38	26	22	78	1286	49	12	105	2079	109	4178
27725	OKEECHOBEE BLVD	SANSBURY WAY	12/5/2007	4:45 PM	0	130	74	145	0	69	32	34	18	73	1472	48	13	141	2556	130	4935
*27660	OKEECHOBEE BLVD	SEMINOLE PRATT W	4/26/2012	7:00 AM	0	10	183	55	0	329	610	4	0	10	108	92	0	78	18	214	1711
27660	OKEECHOBEE BLVD	SEMINOLE PRATT W	3/24/2010	7:00 AM	1	19	250	59	0	325	568	4	0	11	106	123	0	78	30	246	1820
27660	OKEECHOBEE BLVD	SEMINOLE PRATT W	1/14/2009	7:15 AM	0	12	207	56	0	391	535	5	0	4	147	104	0	79	37	193	1770
27660	OKEECHOBEE BLVD	SEMINOLE PRATT W	10/22/2009	7:00 AM	0	7	213	56	0	334	564	6	0	8	105	120	0	74	28	213	1728
27660	OKEECHOBEE BLVD	SEMINOLE PRATT W	3/13/2008	7:00 AM	0	10	251	59	0	375	590	3	0	8	142	109	0	77	38	212	1874
*27660	OKEECHOBEE BLVD	SEMINOLE PRATT W	4/26/2012	5:00 PM	0	60	554	63	0	205	302	13	0	2	33	29	0	67	76	304	1708
27660	OKEECHOBEE BLVD	SEMINOLE PRATT W	3/24/2010	5:00 PM	1	76	678	105	0	202	347	4	0	8	36	34	3	68	80	334	1976
27660	OKEECHOBEE BLVD	SEMINOLE PRATT W	1/14/2009	5:00 PM	0	86	605	65	0	217	247	7	0	11	31	28	2	54	107	383	1843
27660	OKEECHOBEE BLVD	SEMINOLE PRATT W	10/22/2009	5:00 PM	0	80	665	80	0	211	289	4	0	6	34	30	0	63	71	330	1863
27660	OKEECHOBEE BLVD	SEMINOLE PRATT W	3/13/2008	4:45 PM	0	86	587	76	0	246	341	4	0	8	40	36	1	81	90	402	1998
27735	OKEECHOBEE BLVD	SKEES RD/RIVERWA	12/9/2010	7:15 AM	0	60	9	99	2	195	24	58	0	24	2856	68	13	78	1141	33	4660
27735	OKEECHOBEE BLVD	SKEES RD/RIVERWA	1/13/2009	7:15 AM	1	74	3	119	0	224	26	46	0	10	2759	79	1	93	1199	47	4681
27735	OKEECHOBEE BLVD	SKEES RD/RIVERWA	12/6/2007	7:00 AM	0	54	12	116	1	233	34	54	2	16	3183	70	8	91	1250	23	5147
27735	OKEECHOBEE BLVD	SKEES RD/RIVERWA	12/9/2010	5:00 PM	0	111	32	107	0	102	13	50	3	57	1471	52	36	79	2900	197	5210
27735	OKEECHOBEE BLVD	SKEES RD/RIVERWA	1/13/2009	5:00 PM	0	78	45	88	0	107	16	43	2	59	1356	42	0	118	2539	193	4686
27735	OKEECHOBEE BLVD	SKEES RD/RIVERWA	12/6/2007	5:00 PM	0	129	48	134	0	103	13	44	0	72	1654	58	34	107	3001	172	5569
27900	OKEECHOBEE BLVD	SPENCER DR	4/13/2010	7:45 AM	0	0	9	0	0	220	1	62	15	52	2001	11	8	2	1027	208	3616
27900	OKEECHOBEE BLVD	SPENCER DR	12/18/2007	7:30 AM	0	2	2	1	1	363	4	37	4	145	2309	6	0	9	1117	316	4316
27900	OKEECHOBEE BLVD	SPENCER DR	4/13/2010	12:15 PM	0	17	14	13	0	247	11	81	24	70	1709	16	47	31	1661	219	4160
27900	OKEECHOBEE BLVD	SPENCER DR	12/18/2007	12:15 PM	0	26	8	10	0	305	22	151	24	102	1721	17	22	26	1847	276	4557
27900	OKEECHOBEE BLVD	SPENCER DR	4/13/2010	5:00 PM	0	14	13	8	0	253	3	105	21	88	1419	13	10	14	2237	332	4530
27900	OKEECHOBEE BLVD	SPENCER DR	12/18/2007	4:45 PM	0	23	12	9	0	342	10	168	8	100	1508	16	28	23	2505	422	5174
27700	OKEECHOBEE BLVD	SR 7/US 441	4/4/2012	7:30 AM	2	413	180	389	1	595	656	23	0	44	1902	463	45	422	673	92	5900

SIGNAL_ID	E-W STREET	N-S STREET	DATE	TIME	NBU	NBL	NBT	NBR	SBU	SBL	SBT	SBR	EBU	EBL	EBT	EBR	WBU	WBL	WBT	WBR	TOTAL
53600	SOUTH COUNTY COMPL	CONGRESS AVE	5/2/2012	4:30 PM	0	0	1001	49	9	63	839	0	0	0	0	0	0	57	0	143	2161
53600	SOUTH COUNTY COMPL	CONGRESS AVE	5/14/2008	4:45 PM	2	0	1355	27	3	42	986	0	0	0	0	0	0	20	0	103	2538
33346	SOUTH SHORE BLVD	BIG BLUE TRACE	11/17/2011	7:00 AM	0	0	0	0	0	448	0	223	0	109	517	0	0	0	492	136	1925
33346	SOUTH SHORE BLVD	BIG BLUE TRACE	11/16/2009	7:00 AM	0	0	0	0	0	449	0	174	0	128	477	0	0	0	419	130	1777
33346	SOUTH SHORE BLVD	BIG BLUE TRACE	11/17/2011	5:00 PM	0	0	0	0	0	375	0	128	0	141	528	0	6	0	524	417	2119
33346	SOUTH SHORE BLVD	BIG BLUE TRACE	11/16/2009	5:00 PM	0	0	0	0	0	362	0	128	1	145	502	0	8	0	535	395	2076
33347	SOUTH SHORE BLVD	GREENVIEW SHORE	11/17/2011	7:00 AM	0	0	0	1	0	448	0	372	0	266	96	0	3	0	260	561	2007
33347	SOUTH SHORE BLVD	GREENVIEW SHORE	3/17/2010	8:00 AM	0	0	0	2	0	294	0	348	0	205	138	0	10	2	385	165	1549
33347	SOUTH SHORE BLVD	GREENVIEW SHORE	10/28/2009	7:00 AM	0	0	0	0	0	452	0	397	0	258	98	0	8	0	234	530	1977
33347	SOUTH SHORE BLVD	GREENVIEW SHORE	11/17/2011	5:00 PM	0	0	0	2	0	303	0	284	0	510	289	2	6	2	199	335	1932
33347	SOUTH SHORE BLVD	GREENVIEW SHORE	3/17/2010	4:30 PM	0	2	1	3	1	376	1	257	0	620	447	1	10	3	283	281	2286
33347	SOUTH SHORE BLVD	GREENVIEW SHORE	10/28/2009	5:00 PM	0	0	1	3	1	288	1	292	0	613	213	0	5	4	223	311	1955
30800	SOUTHERN BLVD	BENOIST FARMS RD/	9/14/2011	7:30 AM	0	19	29	169	0	79	9	32	0	38	4142	10	0	29	1707	140	6403
30800	SOUTHERN BLVD	BENOIST FARMS RD/	2/17/2011	7:30 AM	0	4	20	127	0	125	4	46	0	46	3767	5	1	38	2711	158	7052
30800	SOUTHERN BLVD	BENOIST FARMS RD/	1/6/2009	7:15 AM	0	3	29	70	0	53	8	33	1	51	3533	6	0	21	1483	156	5447
30800	SOUTHERN BLVD	BENOIST FARMS RD/	10/1/2008	7:15 AM	0	5	17	58	0	51	3	36	3	42	2871	3	2	13	1591	154	4849
30800	SOUTHERN BLVD	BENOIST FARMS RD/	9/14/2011	4:45 PM	0	12	3	26	0	123	20	47	0	27	2759	10	2	57	3493	88	6667
30800	SOUTHERN BLVD	BENOIST FARMS RD/	2/17/2011	5:00 PM	0	3	0	21	0	113	37	39	0	69	1940	20	4	62	3534	38	5880
30800	SOUTHERN BLVD	BENOIST FARMS RD/	1/6/2009	5:00 PM	0	3	9	13	0	82	13	42	0	34	1832	10	2	55	3111	64	5270
30800	SOUTHERN BLVD	BENOIST FARMS RD/	10/1/2008	5:00 PM	0	4	7	14	0	83	14	44	2	16	1623	6	3	45	2634	63	4558
* 30726	SOUTHERN BLVD	BIG BLUE TRACE	3/1/2012	7:15 AM	0	128	13	713	0	19	29	7	2	3	1428	71	0	228	1026	21	3688
30726	SOUTHERN BLVD	BIG BLUE TRACE	2/14/2011	7:15 AM	0	84	20	625	0	10	23	3	0	4	1461	61	0	228	1017	16	3552
30726	SOUTHERN BLVD	BIG BLUE TRACE	6/1/2010	7:15 AM	0	104	4	551	0	15	13	4	0	7	1384	58	1	172	947	13	3273
30726	SOUTHERN BLVD	BIG BLUE TRACE	3/23/2010	7:15 AM	0	121	10	536	0	10	17	9	1	2	1302	73	0	211	972	11	3275
30726	SOUTHERN BLVD	BIG BLUE TRACE	1/12/2009	7:15 AM	2	117	7	579	0	8	26	8	1	1	1518	78	0	181	881	5	3412
30726	SOUTHERN BLVD	BIG BLUE TRACE	3/11/2008	7:30 AM	0	91	12	465	0	15	20	2	0	9	1225	116	1	174	886	8	3024
* 30726	SOUTHERN BLVD	BIG BLUE TRACE	3/1/2012	5:00 PM	1	74	16	247	0	18	24	7	0	5	1255	116	3	552	1336	42	3696
30726	SOUTHERN BLVD	BIG BLUE TRACE	2/14/2011	5:00 PM	5	85	12	232	0	20	28	9	4	2	1094	70	15	604	1311	19	3510
30726	SOUTHERN BLVD	BIG BLUE TRACE	3/23/2010	5:00 PM	0	75	28	237	0	10	21	8	0	5	1353	132	2	588	1270	32	3761
30726	SOUTHERN BLVD	BIG BLUE TRACE	6/1/2010	5:00 PM	0	57	10	181	0	13	13	1	1	4	1132	121	2	565	1211	21	3332
30726	SOUTHERN BLVD	BIG BLUE TRACE	1/12/2009	5:00 PM	0	73	17	241	0	13	18	3	0	3	1142	117	0	537	1409	28	3601
30726	SOUTHERN BLVD	BIG BLUE TRACE	3/11/2008	4:45 PM	0	72	20	216	0	15	26	7	0	4	1070	145	4	473	1195	26	3273
* 30718	SOUTHERN BLVD	BINKS FOREST DR	3/1/2012	7:15 AM	0	203	18	524	0	19	26	7	0	5	984	120	0	138	817	18	2879

SIGNAL_ID	E-W STREET	N-S STREET	DATE	TIME	NBU	NBL	NBT	NBR	SBU	SBL	SBT	SBR	EBU	EBL	EBT	EBR	WBU	WBL	WBT	WBR	TOTAL
30718	SOUTHERN BLVD	BINKS FOREST DR	2/14/2011	7:15 AM	0	162	10	410	0	19	24	9	0	1	1066	114	1	136	792	20	2764
30718	SOUTHERN BLVD	BINKS FOREST DR	3/24/2010	7:00 AM	0	146	14	350	0	24	25	8	1	0	1157	109	0	73	932	25	2864
30718	SOUTHERN BLVD	BINKS FOREST DR	6/1/2010	7:15 AM	1	145	9	421	0	18	18	8	0	4	1019	100	1	73	979	17	2813
30718	SOUTHERN BLVD	BINKS FOREST DR	3/11/2008	7:30 AM	0	167	12	383	0	24	14	7	0	2	1059	135	5	81	745	19	2653
*30718	SOUTHERN BLVD	BINKS FOREST DR	3/1/2012	5:00 PM	0	240	49	216	0	15	15	5	0	7	1173	199	1	230	1040	32	3222
30718	SOUTHERN BLVD	BINKS FOREST DR	2/14/2011	5:00 PM	0	170	31	181	0	19	13	9	0	4	1187	126	1	240	1004	35	3020
30718	SOUTHERN BLVD	BINKS FOREST DR	3/24/2010	5:00 PM	1	150	26	92	0	29	14	2	0	3	1531	99	2	219	1004	40	3212
30718	SOUTHERN BLVD	BINKS FOREST DR	6/1/2010	5:00 PM	1	157	15	68	0	20	9	6	0	2	1297	112	0	270	1032	37	3026
30718	SOUTHERN BLVD	BINKS FOREST DR	3/11/2008	4:45 PM	2	198	20	149	0	12	8	7	0	6	1301	157	2	132	1099	78	3171
30815	SOUTHERN BLVD	CLEARY RD	10/3/2011	7:30 AM	0	0	0	0	0	59	0	71	16	79	3307	0	7	0	1616	66	5221
30815	SOUTHERN BLVD	CLEARY RD	4/22/2009	7:15 AM	0	0	0	0	0	57	0	93	19	66	3168	0	8	0	1606	69	5086
30815	SOUTHERN BLVD	CLEARY RD	10/3/2011	4:45 PM	0	0	0	0	0	84	0	73	31	73	1743	0	10	0	2974	33	5021
30815	SOUTHERN BLVD	CLEARY RD	4/22/2009	4:30 PM	0	0	0	0	0	81	0	122	17	55	2041	0	26	0	2689	29	5060
30875	SOUTHERN BLVD	CONGRESS AVE/AUS	9/20/2011	7:30 AM	0	0	1473	0	0	0	336	0	0	1394	0	0	0	410	0	0	3613
30875	SOUTHERN BLVD	CONGRESS AVE/AUS	2/3/2011	7:30 AM	0	0	1375	0	0	0	517	0	0	1324	0	0	0	608	0	0	3824
30875	SOUTHERN BLVD	CONGRESS AVE/AUS	10/7/2009	7:30 AM	0	0	1505	0	0	0	586	0	0	1492	0	0	0	565	0	0	4148
30875	SOUTHERN BLVD	CONGRESS AVE/AUS	9/20/2011	4:45 PM	0	0	1216	0	0	0	911	0	0	459	0	0	0	679	0	0	3265
30875	SOUTHERN BLVD	CONGRESS AVE/AUS	2/3/2011	4:45 PM	0	0	871	0	2	0	1230	0	0	451	0	0	0	680	0	0	3234
30875	SOUTHERN BLVD	CONGRESS AVE/AUS	10/7/2009	4:30 PM	0	0	1231	0	0	0	1380	0	0	413	0	0	0	587	0	0	3611
30910	SOUTHERN BLVD	DIXIE HWY	9/14/2011	7:45 AM	0	158	449	92	0	52	260	87	0	318	739	135	0	52	311	34	2687
30910	SOUTHERN BLVD	DIXIE HWY	10/2/2008	7:30 AM	0	194	538	125	0	74	244	98	0	256	832	141	1	52	289	55	2899
30910	SOUTHERN BLVD	DIXIE HWY	9/14/2011	3:00 PM	0	234	376	48	0	47	445	172	0	121	298	184	0	111	603	55	2694
30910	SOUTHERN BLVD	DIXIE HWY	10/2/2008	4:30 PM	0	156	376	48	0	55	622	306	0	93	290	129	0	126	882	47	3130
30812	SOUTHERN BLVD	FL TURNPIKE (EAST)	10/3/2011	7:30 AM	0	0	0	0	0	329	0	213	2	581	3252	0	11	0	1675	154	6217
30812	SOUTHERN BLVD	FL TURNPIKE (EAST)	2/17/2011	7:30 AM	0	0	0	0	0	324	1	249	0	702	3279	0	13	0	1784	201	6553
30812	SOUTHERN BLVD	FL TURNPIKE (EAST)	10/1/2008	7:15 AM	0	0	0	0	0	323	0	238	1	533	2524	0	7	6	1555	242	5429
30812	SOUTHERN BLVD	FL TURNPIKE (EAST)	10/3/2011	4:45 PM	0	0	0	0	0	136	0	402	2	394	1781	0	31	0	2965	102	5813
30812	SOUTHERN BLVD	FL TURNPIKE (EAST)	2/17/2011	5:00 PM	0	0	0	0	0	202	0	434	3	455	1972	0	48	0	2999	166	6279
30812	SOUTHERN BLVD	FL TURNPIKE (EAST)	10/1/2008	5:00 PM	0	0	0	0	0	148	0	356	4	324	1552	0	32	0	2205	170	4791
30925	SOUTHERN BLVD	FLAGLER DR	9/1/2011	7:30 AM	0	35	100	96	0	16	16	13	0	8	590	25	0	13	123	10	1045
30925	SOUTHERN BLVD	FLAGLER DR	1/11/2011	7:45 AM	0	35	141	137	0	20	40	14	0	11	633	23	0	16	195	21	1286
30925	SOUTHERN BLVD	FLAGLER DR	11/8/2007	7:45 AM	0	45	179	161	0	27	47	20	0	14	760	29	0	12	196	20	1510
30925	SOUTHERN BLVD	FLAGLER DR	4/22/2008	7:45 AM	0	41	172	153	0	30	43	13	0	6	685	23	0	11	187	21	1385

SIGNAL_ID	E-W STREET	N-S STREET	DATE	TIME	NBU	NBL	NBT	NBR	SBU	SBL	SBT	SBR	EBU	EBL	EBT	EBR	WBU	WBL	WBT	WBR	TOTAL
30925	SOUTHERN BLVD	FLAGLER DR	4/22/2008	3:30 PM	0	28	61	37	0	22	110	13	0	19	294	35	0	60	739	31	1449
30925	SOUTHERN BLVD	FLAGLER DR	9/1/2011	4:15 PM	0	19	30	27	0	9	95	8	0	12	105	41	0	15	587	14	962
30925	SOUTHERN BLVD	FLAGLER DR	1/11/2011	4:30 PM	0	18	52	25	0	22	142	14	0	21	264	44	0	39	612	29	1282
30925	SOUTHERN BLVD	FLAGLER DR	11/8/2007	4:30 PM	0	23	42	35	0	54	139	16	0	15	223	56	0	58	715	71	1447
* 30735	SOUTHERN BLVD	FOREST HILL/CREST	3/5/2012	7:15 AM	3	353	375	1092	2	506	570	262	36	187	1647	280	8	371	915	165	6772
30735	SOUTHERN BLVD	FOREST HILL/CREST	9/20/2011	7:15 AM	1	312	319	1039	2	565	465	235	28	148	1094	282	17	390	1002	168	6067
30735	SOUTHERN BLVD	FOREST HILL/CREST	2/14/2011	7:15 AM	0	404	550	1073	3	535	525	174	25	219	1652	220	24	297	993	177	6871
30735	SOUTHERN BLVD	FOREST HILL/CREST	3/23/2010	7:15 AM	0	310	404	1163	0	574	536	260	25	127	1474	269	1	424	1007	173	6747
30735	SOUTHERN BLVD	FOREST HILL/CREST	1/12/2009	7:15 AM	1	345	349	934	1	465	704	243	16	146	1412	345	18	298	790	182	6249
30735	SOUTHERN BLVD	FOREST HILL/CREST	10/8/2008	7:30 AM	0	324	384	981	4	437	693	218	30	170	1433	302	12	316	876	160	6340
* 30735	SOUTHERN BLVD	FOREST HILL/CREST	3/5/2012	5:00 PM	9	321	629	605	17	258	584	203	35	344	1129	331	9	864	1509	450	7297
30735	SOUTHERN BLVD	FOREST HILL/CREST	9/20/2011	5:00 PM	0	278	542	545	7	338	541	156	41	262	937	287	10	827	1347	338	6456
30735	SOUTHERN BLVD	FOREST HILL/CREST	2/14/2011	5:00 PM	0	370	901	623	22	358	644	213	32	309	1329	320	18	956	1562	402	8059
30735	SOUTHERN BLVD	FOREST HILL/CREST	3/23/2010	5:00 PM	3	418	988	667	8	256	485	197	5	364	1507	366	20	913	1494	452	8143
30735	SOUTHERN BLVD	FOREST HILL/CREST	1/12/2009	5:00 PM	1	361	715	504	17	220	650	193	68	298	974	360	12	824	1488	384	7069
30735	SOUTHERN BLVD	FOREST HILL/CREST	10/8/2008	5:00 PM	0	410	734	449	20	198	700	210	42	317	985	291	24	766	1250	348	6744
30880	SOUTHERN BLVD	GEM LAKE DR/AIRPO	10/7/2008	7:30 AM	0	20	1	17	0	11	0	5	15	31	2729	12	33	13	1749	5	4641
30880	SOUTHERN BLVD	GEM LAKE DR/AIRPO	10/7/2008	4:30 PM	0	22	1	17	0	21	0	10	13	7	1552	8	8	9	2491	3	4162
30835	SOUTHERN BLVD	HAVERHILL RD	2/15/2012	7:30 AM	2	165	579	236	4	91	511	45	2	116	368	221	3	43	290	29	2705
30835	SOUTHERN BLVD	HAVERHILL RD	2/15/2011	7:30 AM	0	0	774	209	7	86	533	2	0	127	340	197	0	0	0	0	2275
30835	SOUTHERN BLVD	HAVERHILL RD	2/15/2011	7:30 AM	3	160	773	0	0	0	596	71	0	0	0	0	0	48	251	41	1943
30835	SOUTHERN BLVD	HAVERHILL RD	10/21/2008	7:30 AM	0	0	853	189	0	70	521	0	0	72	287	153	0	0	0	0	2145
30835	SOUTHERN BLVD	HAVERHILL RD	2/15/2012	4:30 PM	0	136	665	62	20	89	693	102	2	139	216	174	18	157	479	81	3033
30835	SOUTHERN BLVD	HAVERHILL RD	2/15/2011	5:00 PM	1	24	675	91	21	99	847	1	0	121	245	182	0	0	0	0	2307
30835	SOUTHERN BLVD	HAVERHILL RD	2/15/2011	5:00 PM	3	140	766	0	1	0	913	98	0	0	0	0	0	188	486	95	2690
30835	SOUTHERN BLVD	HAVERHILL RD	10/21/2008	5:00 PM	5	119	744	0	1	0	979	79	0	0	0	0	9	140	378	95	2549
30835	SOUTHERN BLVD	HAVERHILL RD	10/21/2008	7:30 AM	4	155	748	0	0	0	620	68	0	0	0	0	4	34	211	29	1873
30835	SOUTHERN BLVD	HAVERHILL RD	10/21/2008	5:00 PM	0	0	755	58	14	54	1013	0	2	97	204	156	0	0	0	0	2353
30890	SOUTHERN BLVD	I-95	9/27/2011	7:30 AM	0	755	0	419	0	0	0	0	0	720	1298	0	0	0	833	360	4385
30890	SOUTHERN BLVD	I-95	9/27/2011	4:45 PM	0	781	0	379	0	0	0	0	0	603	705	0	0	0	1203	284	3955
30881	SOUTHERN BLVD	I-95 (COUNT STA)	9/27/2011	7:30 AM	0	0	0	0	0	283	0	760	0	0	1706	1108	0	345	1281	0	5483
30881	SOUTHERN BLVD	I-95 (COUNT STA)	9/27/2011	4:45 PM	0	0	0	0	0	315	0	826	0	0	884	654	0	378	1531	0	4588
30825	SOUTHERN BLVD	JOG RD	2/29/2012	7:30 AM	4	427	1163	916	1	627	676	49	17	124	16	255	36	209	41	380	4941

SIGNAL_ID	E-W STREET	N-S STREET	DATE	TIME	NBU	NBL	NBT	NBR	SBU	SBL	SBT	SBR	EBU	EBL	EBT	EBR	WBU	WBL	WBT	WBR	TOTAL
30850	SOUTHERN BLVD	MILITARY TR	3/17/2009	7:30 AM	0	0	1557	210	0	136	857	0	0	251	239	139	0	0	0	0	3389
30850	SOUTHERN BLVD	MILITARY TR	10/21/2008	7:30 AM	0	147	1605	0	1	0	1057	54	0	0	0	0	1	83	61	163	3172
30850	SOUTHERN BLVD	MILITARY TR	10/21/2008	7:30 AM	0	0	1470	180	0	120	1053	0	0	246	245	121	0	0	0	0	3435
30850	SOUTHERN BLVD	MILITARY TR	4/4/2012	4:30 PM	2	242	1224	152	3	138	1320	253	3	133	115	69	4	165	141	179	4143
30850	SOUTHERN BLVD	MILITARY TR	2/15/2011	4:30 PM	0	0	1481	156	12	174	1738	0	0	159	128	113	0	0	0	0	3961
30850	SOUTHERN BLVD	MILITARY TR	2/15/2011	4:30 PM	0	211	1117	0	2	17	1720	243	0	0	0	0	0	255	215	307	4087
30850	SOUTHERN BLVD	MILITARY TR	3/17/2009	4:45 PM	0	0	1444	115	7	173	1634	0	0	126	111	93	0	0	0	0	3703
30850	SOUTHERN BLVD	MILITARY TR	3/17/2009	4:45 PM	1	203	1405	0	0	0	1716	257	0	0	0	0	5	166	258	200	4211
30850	SOUTHERN BLVD	MILITARY TR	10/21/2008	5:00 PM	0	0	1501	123	0	115	1665	0	0	108	87	115	0	0	0	0	3714
30850	SOUTHERN BLVD	MILITARY TR	10/21/2008	5:00 PM	0	209	1460	0	2	0	1579	210	0	0	0	0	0	172	170	209	4011
30915	SOUTHERN BLVD	OLIVE AVE	9/14/2011	7:45 AM	0	64	153	71	0	18	40	59	0	101	839	70	0	37	224	12	1688
30915	SOUTHERN BLVD	OLIVE AVE	10/2/2008	7:45 AM	0	81	188	106	0	29	58	57	0	125	817	72	0	46	251	17	1847
30915	SOUTHERN BLVD	OLIVE AVE	9/14/2011	4:15 PM	0	51	62	29	0	12	65	75	0	75	261	56	0	100	763	29	1578
30915	SOUTHERN BLVD	OLIVE AVE	10/2/2008	4:15 PM	0	72	89	33	0	26	125	95	0	49	288	67	0	137	833	30	1844
30730	SOUTHERN BLVD	PALMS WEST PARK	9/22/2011	7:30 AM	0	0	0	0	0	130	0	16	0	195	1666	0	15	6	976	376	3380
30730	SOUTHERN BLVD	PALMS WEST PARK	10/8/2008	7:30 AM	0	0	0	0	0	98	0	30	0	114	1792	0	12	1	1300	398	3745
30730	SOUTHERN BLVD	PALMS WEST PARK	9/22/2011	5:00 PM	0	0	0	0	1	256	0	92	0	44	1077	0	20	2	1622	86	3200
30730	SOUTHERN BLVD	PALMS WEST PARK	10/8/2008	5:00 PM	0	0	0	0	0	341	0	93	0	17	1344	0	19	1	2165	103	4083
30900	SOUTHERN BLVD	PARKER AVE	9/20/2011	7:15 AM	0	99	250	253	0	166	117	59	0	154	1236	161	0	62	696	61	3314
30900	SOUTHERN BLVD	PARKER AVE	10/2/2008	7:30 AM	0	213	300	110	0	54	177	88	0	137	1118	158	0	71	604	49	3079
30900	SOUTHERN BLVD	PARKER AVE	9/20/2011	4:45 PM	0	78	151	287	0	157	160	81	0	189	760	122	0	30	1287	116	3418
30900	SOUTHERN BLVD	PARKER AVE	10/2/2008	4:30 PM	0	203	193	79	0	71	324	125	3	109	585	209	3	153	1147	72	3276
30808	SOUTHERN BLVD	PIKE RD	9/19/2011	7:30 AM	0	0	0	0	0	156	0	310	0	393	2902	0	0	0	1762	263	5786
30808	SOUTHERN BLVD	PIKE RD	2/17/2011	7:30 AM	0	0	0	0	0	139	0	210	1	414	3628	0	0	0	1741	255	6388
30808	SOUTHERN BLVD	PIKE RD	10/1/2008	7:15 AM	0	0	0	0	2	229	0	319	1	291	2940	0	0	0	1543	252	5577
30808	SOUTHERN BLVD	PIKE RD	3/5/2008	7:15 AM	0	0	0	0	0	261	0	309	0	282	2487	0	0	0	1132	253	4724
30808	SOUTHERN BLVD	PIKE RD	9/19/2011	4:30 PM	0	0	0	0	0	289	0	362	3	225	1788	0	0	0	2786	237	5690
30808	SOUTHERN BLVD	PIKE RD	2/17/2011	5:00 PM	0	0	0	0	0	315	0	364	2	214	2138	0	0	0	3099	255	6387
30808	SOUTHERN BLVD	PIKE RD	10/1/2008	5:00 PM	0	0	0	0	0	314	0	526	0	149	1468	0	0	0	1958	384	4799
30808	SOUTHERN BLVD	PIKE RD	3/5/2008	4:45 PM	0	0	0	0	0	368	0	446	0	131	1849	0	0	0	1840	403	5037
* 30750	SOUTHERN BLVD	ROYAL PALM BEACH	2/29/2012	7:15 AM	0	30	7	33	0	600	5	166	3	188	2992	37	2	22	1300	226	5611
30750	SOUTHERN BLVD	ROYAL PALM BEACH	9/8/2011	7:15 AM	0	19	11	27	0	547	12	189	3	230	3024	23	21	10	1191	237	5544
30750	SOUTHERN BLVD	ROYAL PALM BEACH	2/22/2011	7:15 AM	0	29	7	22	0	473	12	181	5	191	3023	21	24	19	1287	258	5552

SIGNAL_ID	E-W STREET	N-S STREET	DATE	TIME	NBU	NBL	NBT	NBR	SBU	SBL	SBT	SBR	EBU	EBL	EBT	EBR	WBU	WBL	WBT	WBR	TOTAL
30750	SOUTHERN BLVD	ROYAL PALM BEACH	3/23/2010	7:15 AM	0	20	5	36	0	438	7	171	2	202	2831	22	42	25	1312	213	5326
30750	SOUTHERN BLVD	ROYAL PALM BEACH	1/12/2009	7:15 AM	0	21	6	34	2	482	13	159	3	201	2581	22	13	14	1063	176	4790
30750	SOUTHERN BLVD	ROYAL PALM BEACH	10/8/2008	7:30 AM	0	14	4	22	0	517	8	206	3	217	2343	20	18	11	1151	236	4770
* 30750	SOUTHERN BLVD	ROYAL PALM BEACH	2/29/2012	4:45 PM	0	31	5	32	0	373	11	160	5	235	1965	32	1	43	2164	407	5464
30750	SOUTHERN BLVD	ROYAL PALM BEACH	9/8/2011	4:45 PM	0	11	5	5	0	281	9	177	2	221	1907	12	8	15	2364	508	5525
30750	SOUTHERN BLVD	ROYAL PALM BEACH	2/22/2011	5:00 PM	0	49	11	29	0	340	12	256	4	228	1732	33	10	40	2625	582	5951
30750	SOUTHERN BLVD	ROYAL PALM BEACH	3/23/2010	5:00 PM	0	36	7	30	0	306	7	193	15	229	1875	29	22	32	3063	613	6457
30750	SOUTHERN BLVD	ROYAL PALM BEACH	1/12/2009	5:00 PM	0	35	12	23	0	283	13	193	8	240	1435	11	28	34	2319	605	5239
30750	SOUTHERN BLVD	ROYAL PALM BEACH	10/8/2008	5:00 PM	0	14	6	14	0	289	5	214	6	238	1351	23	9	26	2195	638	5028
30790	SOUTHERN BLVD	SANSBURY'S WAY	2/29/2012	7:15 AM	0	187	197	463	0	103	153	107	0	101	3393	222	16	94	1617	188	6841
30790	SOUTHERN BLVD	SANSBURY'S WAY	9/14/2011	7:15 AM	0	443	177	192	3	97	129	96	0	254	3468	95	6	141	1666	87	6854
30790	SOUTHERN BLVD	SANSBURY'S WAY	2/17/2011	7:30 AM	0	175	223	392	0	74	131	64	1	102	3320	172	6	88	1689	245	6682
30790	SOUTHERN BLVD	SANSBURY'S WAY	10/6/2010	7:15 AM	0	176	192	481	0	92	124	65	0	55	2899	219	5	120	1470	103	6001
30790	SOUTHERN BLVD	SANSBURY'S WAY	1/6/2009	7:15 AM	0	91	170	410	0	75	63	66	0	77	3072	54	5	84	1268	100	5535
30790	SOUTHERN BLVD	SANSBURY'S WAY	10/1/2008	7:15 AM	0	98	194	424	0	77	66	36	3	118	2863	49	3	103	1157	173	5364
30790	SOUTHERN BLVD	SANSBURY'S WAY	3/18/2008	7:30 AM	0	73	222	452	0	74	109	36	0	80	1875	39	6	88	1163	122	4339
30790	SOUTHERN BLVD	SANSBURY'S WAY	2/29/2012	4:45 PM	0	152	164	139	0	135	205	170	1	134	1813	153	19	357	3052	202	6696
30790	SOUTHERN BLVD	SANSBURY'S WAY	9/14/2011	5:00 PM	0	134	111	126	0	141	220	136	0	139	1570	195	25	385	2905	181	6268
30790	SOUTHERN BLVD	SANSBURY'S WAY	2/17/2011	5:00 PM	0	122	126	137	0	135	213	125	3	105	1999	146	29	351	3217	177	6885
30790	SOUTHERN BLVD	SANSBURY'S WAY	10/6/2010	5:00 PM	0	144	125	121	0	130	223	129	3	134	1676	137	6	402	2630	149	6009
30790	SOUTHERN BLVD	SANSBURY'S WAY	1/6/2009	5:00 PM	0	81	99	113	0	71	162	94	2	72	1617	109	13	299	2786	102	5620
30790	SOUTHERN BLVD	SANSBURY'S WAY	10/1/2008	5:00 PM	0	47	118	92	0	124	207	74	0	68	1363	123	2	266	2446	106	5036
30790	SOUTHERN BLVD	SANSBURY'S WAY	3/18/2008	4:45 PM	0	56	150	109	0	80	231	45	0	86	1245	89	14	234	1614	89	4042
* 30710	SOUTHERN BLVD	SEMINOLE PRATT W	3/5/2012	7:15 AM	0	0	0	0	5	644	0	138	0	53	380	0	3	0	663	198	2084
30710	SOUTHERN BLVD	SEMINOLE PRATT W	2/9/2011	7:00 AM	0	0	0	0	0	626	0	124	0	90	409	0	8	0	764	219	2240
30710	SOUTHERN BLVD	SEMINOLE PRATT W	6/1/2010	7:00 AM	0	0	0	0	0	652	0	113	0	82	456	0	0	0	946	178	2427
30710	SOUTHERN BLVD	SEMINOLE PRATT W	3/24/2010	7:00 AM	0	0	0	0	0	761	0	125	0	82	511	0	0	0	875	225	2579
30710	SOUTHERN BLVD	SEMINOLE PRATT W	1/14/2009	7:15 AM	0	0	0	0	0	633	0	162	0	107	516	0	8	0	779	195	2400
30710	SOUTHERN BLVD	SEMINOLE PRATT W	3/11/2008	7:15 AM	0	0	0	0	0	626	0	169	0	113	535	0	5	0	1011	223	2682
* 30710	SOUTHERN BLVD	SEMINOLE PRATT W	3/5/2012	5:00 PM	0	0	0	0	0	290	0	98	0	159	721	0	7	0	478	645	2398
30710	SOUTHERN BLVD	SEMINOLE PRATT W	2/9/2011	4:45 PM	0	0	0	0	0	387	0	59	0	201	649	0	20	0	697	586	2599
30710	SOUTHERN BLVD	SEMINOLE PRATT W	6/1/2010	5:00 PM	0	0	0	0	0	385	0	88	0	181	1083	0	0	0	562	495	2794
30710	SOUTHERN BLVD	SEMINOLE PRATT W	3/24/2010	5:00 PM	0	0	0	0	0	361	0	79	0	248	1319	0	0	0	549	571	3127

SIGNAL_ID	E-W STREET	N-S STREET	DATE	TIME	NBU	NBL	NBT	NBR	SBU	SBL	SBT	SBR	EBU	EBL	EBT	EBR	WBU	WBL	WBT	WBR	TOTAL
30710	SOUTHERN BLVD	SEMINOLE PRATT W	1/14/2009	5:00 PM	0	0	0	0	0	274	0	76	0	204	867	0	6	0	495	665	2587
30710	SOUTHERN BLVD	SEMINOLE PRATT W	3/11/2008	4:45 PM	0	0	0	0	0	287	0	120	0	171	905	0	8	0	509	645	2645
30775	SOUTHERN BLVD	SR 7/US 441	3/5/2012	7:15 AM	9	373	1076	779	0	314	974	266	0	499	66	444	46	386	30	173	5435
30775	SOUTHERN BLVD	SR 7/US 441	5/8/2012	5:00 PM	22	488	1245	461	22	222	1123	479	154	446	64	407	88	722	168	319	6430
30775	SOUTHERN BLVD	SR 7/US 441	9/12/2011	7:30 AM	18	419	1024	777	0	299	894	285	0	543	69	400	69	426	39	179	5441
30775	SOUTHERN BLVD	SR 7/US 441	2/22/2011	7:15 AM	18	415	912	788	1	317	875	240	1	410	56	421	0	415	34	163	5066
30775	SOUTHERN BLVD	SR 7/US 441	3/10/2010	7:30 AM	42	362	792	726	5	320	921	295	60	368	80	459	54	357	32	193	5066
30775	SOUTHERN BLVD	SR 7/US 441	1/12/2009	7:15 AM	28	320	905	584	7	171	613	316	47	370	88	387	0	273	35	99	4243
30775	SOUTHERN BLVD	SR 7/US 441	3/18/2008	7:30 AM	17	383	983	335	3	94	853	269	47	605	49	350	1	320	42	104	4455
30775	SOUTHERN BLVD	SR 7/US 441	3/5/2012	5:00 PM	23	570	1538	422	14	226	1422	552	0	807	84	497	19	700	187	320	7381
30775	SOUTHERN BLVD	SR 7/US 441	9/12/2011	5:00 PM	17	464	1287	370	0	221	1005	502	0	557	59	366	51	627	152	309	5987
30775	SOUTHERN BLVD	SR 7/US 441	2/22/2011	5:00 PM	31	633	1312	478	4	243	1964	640	0	499	100	474	0	690	288	190	7546
30775	SOUTHERN BLVD	SR 7/US 441	3/10/2010	5:00 PM	17	529	1553	475	14	250	1253	501	182	656	78	469	24	699	158	369	7227
30775	SOUTHERN BLVD	SR 7/US 441	1/12/2009	5:00 PM	19	594	1270	370	11	194	1157	642	201	430	80	402	1	683	157	339	6550
30775	SOUTHERN BLVD	SR 7/US 441	3/18/2008	4:45 PM	37	644	1109	311	20	116	1334	135	1	517	151	303	0	412	112	150	5352
30920	SOUTHERN BLVD	WASHINGTON RD	9/1/2011	7:30 AM	0	4	10	13	0	5	3	75	0	150	667	19	0	5	190	5	1146
30920	SOUTHERN BLVD	WASHINGTON RD	10/2/2008	7:30 AM	0	7	15	19	0	12	7	93	0	189	720	20	0	1	164	13	1260
30920	SOUTHERN BLVD	WASHINGTON RD	9/1/2011	4:15 PM	0	9	4	0	0	6	9	208	0	61	219	13	0	13	658	1	1201
30920	SOUTHERN BLVD	WASHINGTON RD	10/2/2008	4:15 PM	0	18	11	3	0	22	23	307	0	74	257	6	0	14	728	11	1474
* 30690	SR 80	CR 880	3/10/2009	6:15 AM	0	0	0	94	0	3	0	0	0	3	418	0	0	138	689	0	1345
* 30690	SR 80	CR 880	3/10/2009	5:00 PM	0	1	0	227	0	0	0	0	0	0	649	1	0	133	482	0	1493
81500	SR 80	ROOSEVELT ST/GLA	11/1/2010	7:00 AM	0	15	17	51	0	67	10	69	0	100	398	7	0	37	303	119	1193
81500	SR 80	ROOSEVELT ST/GLA	11/1/2010	2:45 PM	0	13	7	35	0	61	6	55	0	35	439	15	0	44	367	43	1120
81500	SR 80	ROOSEVELT ST/GLA	11/1/2010	5:00 PM	0	21	6	67	0	32	11	38	0	27	470	12	1	99	679	24	1487
81295	SR 80	SR 27	5/24/2010	7:30 AM	0	4	289	43	1	441	280	14	0	14	138	10	0	62	70	254	1620
81295	SR 80	SR 27	3/18/2009	7:00 AM	1	3	99	34	0	318	146	13	0	10	85	11	1	32	67	260	1080
81295	SR 80	SR 27	5/24/2010	4:30 PM	1	5	315	96	4	403	213	16	0	10	125	6	0	7	342	376	1919
81295	SR 80	SR 27	3/18/2009	4:15 PM	2	3	272	40	0	414	163	13	0	13	148	9	0	32	158	430	1697
78051	SR 80	SR 700/98	11/3/2010	7:00 AM	0	5	9	1	0	102	7	0	0	0	237	3	0	0	535	115	1014
78051	SR 80	SR 700/98	11/3/2010	4:15 PM	0	1	9	1	0	94	9	2	0	3	440	4	1	0	252	113	929
81400	SR 80	SR 715	5/24/2010	7:30 AM	0	0	0	0	0	166	0	227	0	234	497	0	1	0	391	171	1687
81400	SR 80	SR 715	5/24/2010	4:45 PM	0	0	0	0	0	163	0	327	0	275	513	0	0	0	446	271	1995
30765	SR 80 (SOUTHERN BLV	103RD AVE	9/8/2011	7:30 AM	0	0	0	0	0	9	0	7	0	22	3353	0	17	0	1790	12	5210

APPENDIX B

Highland Dunes (Entire Site) Trip Generation

DAILY

Land Use	ITE Code	Intensity	Trip Generation Rate (1)	Total Trips			Internal Trips (2)			External Trips			Pass-by Trips (3)		New External Trips			
				In	Out	Total	In	Out	Total	In	Out	Total	In	Out	Total			
Residential Single Family	210	1,880 DUs	10 /DU															
Residential Multi Family	230	120 DUs	7 /DU															
Park	412	20 Acres	2.28 /Acre															
School - Elementary	520	970 Students	1.29 /Student															
PBC Utility Site (4)	IND	1 Site	202 /Site															
General Office	710	50,000 SF	$\text{Ln}(T) = 0.76\text{Ln}(X) + 3.68$															
Specialty Retail	826	50,000 SF	$T = 42.78(X) + 37.66$															
TOTALS																		

AM Peak Hour

Land Use	ITE Code	Intensity	Trip Generation Rate (1)	Total Trips			Internal Trips (2)		External Trips			Pass-by Trips (3)		New Trips		
				In	Out	Total	In	Out	In	Out	Total	In	Out	Total		
Residential Single Family	210	1,880 DUs	$T = 0.70(X) + 9.74 (25/75)$	332	994	1,326	165	12.5%	260	901	1,161	-	0%	260	901	1,161
Residential Multi Family	230	120 DUs	$\text{Ln}(T) = 0.80\text{Ln}(X) + 0.26 (17/83)$	10	50	60	7	12.5%	8	45	53	-	0%	8	45	53
Park	412	20 Acres	0.02 /Acre (61/39)	-	-	-	-	0.0%	-	-	-	-	0%	-	-	-
School - Elementary	520	970 Students	0.45 /Student (55/45)	240	197	437	137	31.5%	166	134	300	-	0%	166	134	300
PBC Utility Site (4)	IND	1 Site	20 /Site (100/0)	20	-	20	1	5.3%	19	-	19	-	0%	19	-	19
General Office	710	50,000 SF	$\text{Ln}(T) = 0.80\text{Ln}(X) + 1.57 (88/12)$	97	13	110	6	5.3%	93	11	104	-	0%	93	11	104
Specialty Retail (5)	826	50,000 SF	0.96 /1000SF (62/38)	30	18	48	44	91.5%	3	1	4	-	0%	3	1	4
TOTALS				729	1,272	2,001	360	18.0%	549	1,092	1,641			549	1,092	1,641

PM Peak Hour

Land Use	ITE Code	Intensity	Trip Generation Rate (1)	Total Trips			Internal Trips (2)		External Trips			Pass-by Trips (3)		New Trips		
				In	Out	Total	In	Out	In	Out	Total	In	Out	Total		
Residential Single Family	210	1,880 DUs	$\text{Ln}(T) = 0.90\text{Ln}(X) + 0.51 (63/37)$	928	545	1,473	155	10.5%	844	474	1,318	-	0%	844	474	1,318
Residential Multi Family	230	120 DUs	$\text{Ln}(T) = 0.82\text{Ln}(X) + 0.32 (67/33)$	47	23	70	7	10.5%	43	20	63	-	0%	43	20	63
Park	412	20 Acres	0.09 /Acre (61/39)	1	1	2	2	95.0%	-	-	-	-	0%	-	-	-
School - Elementary	520	970 Students	0.15 /Student (49/51)	72	74	146	48	33.1%	48	50	98	-	0%	48	50	98
PBC Utility Site (4)	IND	1 Site	20 /Site (50/50)	10	10	20	1	6.2%	9	10	19	-	0%	9	10	19
General Office	710	50,000 SF	$\text{Ln}(T) = 0.74\text{Ln}(X) + 1.83 (17/83)$	19	94	113	7	6.2%	16	90	106	-	0%	16	90	106
Specialty Retail	826	50,000 SF	$T = 2.40(X) + 21.48 (44/56)$	62	79	141	118	83.6%	10	13	23	-	0%	10	13	23
TOTALS				1,139	826	1,965	338	17.2%	970	657	1,627			970	657	1,627

(1) Source: Institute of Transportation Engineers (ITE), Trip Generation, 9th Edition.

(2) See Appendix B.

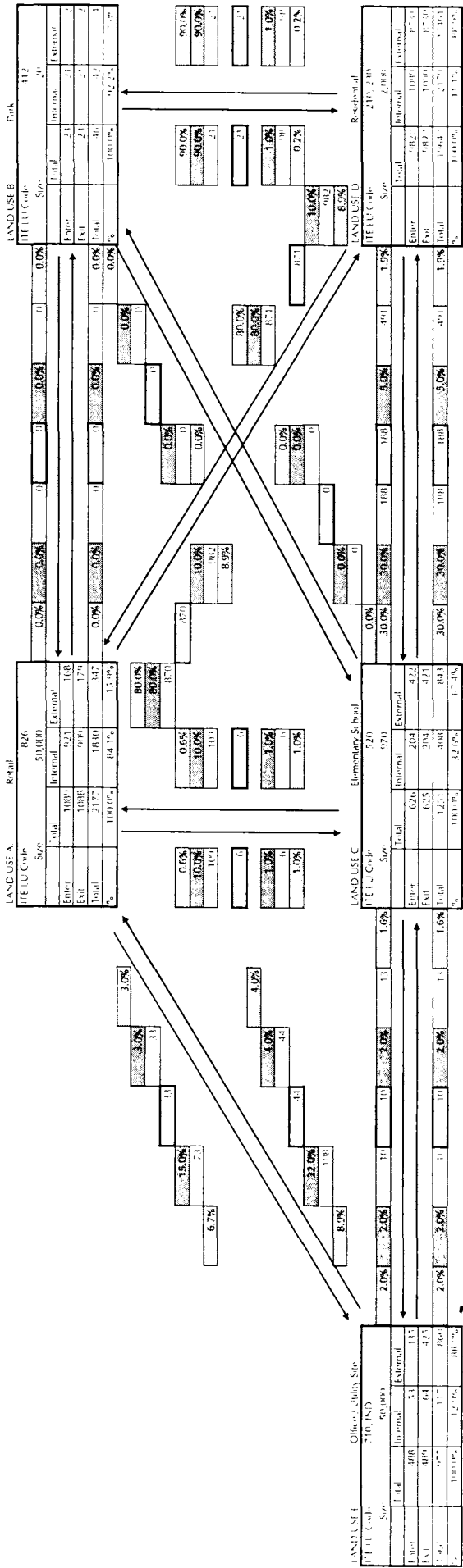
(3) Given the remote location of the Site and the high internalization, no pass-by rates were used.

(4) Trip Generation rate based on Site Plan for Minor Utility/Gov. Services Site by Matthews Consulting, approved 6/22/05.

(5) No AM peak hour data available for Specialty Retail. Used ITE Code 820.

INTERNAL CAPTURE WORKSHEET

PROJECT: Highland Dunes
TIME PERIOD: Daily Traffic
DATE: 03/18/13



Net External Trips for Multi-Use Development

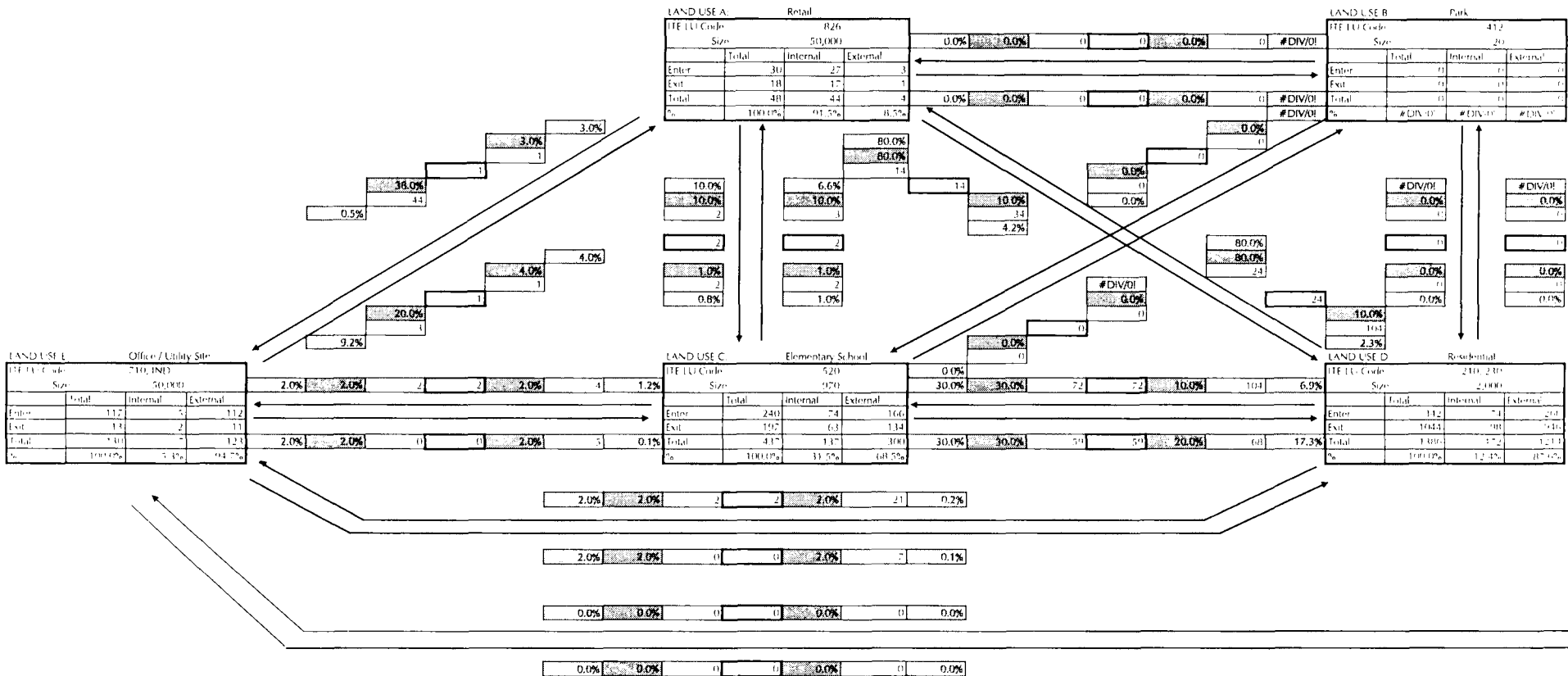
	LU A	LU B	LU C	LU D	LU E	TOTAL
Enter	1,000	2	422	626	425	2,575
Exit	1,000	2	422	344	425	2,293
Total	0	0	0	282	0	282
Single Use Trip Count Estimate	27,860	46	1,353	1,964	975	32,204

LEGEND

- 1.0% Actual percent of trips entering/exiting a land use from another land use based on balance of number of trips
- 3.0% Estimated percent of trips entering/exiting a land use from another land use - input by user
- 0.1 Number of trips entering/exiting a land use from another land use based on percent input by user
- 1.3 Ratio of number of trips (based on value) between two land uses

INTERNAL CAPTURE WORKSHEET

PROJECT: Highland Dunes
 TIME PERIOD: AM Peak Hour Traffic
 DATE: 03/18/13



	Net External Trips for Multi-Use Development						TOTAL
	LU A	LU B	LU C	LU D	LU E		
Enter	3	0	166	268	112	549	
Exit	1	0	134	946	33	1092	
Total	4	0	300	1214	145	1641	
Single-Use Trip Count Estimate	40	0	417	1,096	130	2083	

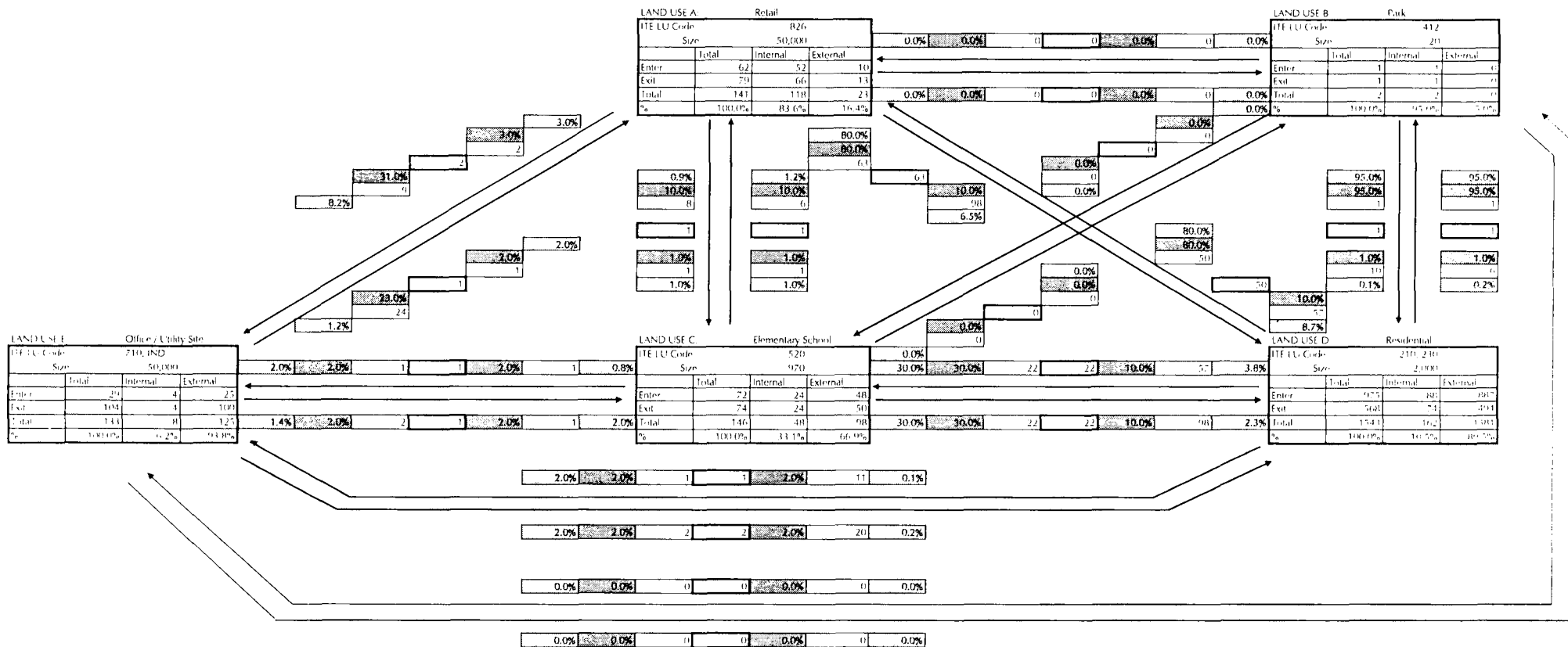
INTERNAL CAPTURE 10.0%

LEGEND

- 1.0% Actual percent of trips entering/exiting a land use from another land use based on balanced number of trips
- 5.0% Estimated percent of trips entering/exiting a land use from another land use input by user
- 63 Number of trips entering/exiting a land use from another land use based on percent input by user
- 12 Balanced number of trips (lowest value) between two land uses

INTERNAL CAPTURE WORKSHEET

PROJECT: Highland Dunes
 TIME PERIOD: PM Peak Hour Traffic
 DATE: 03/18/13

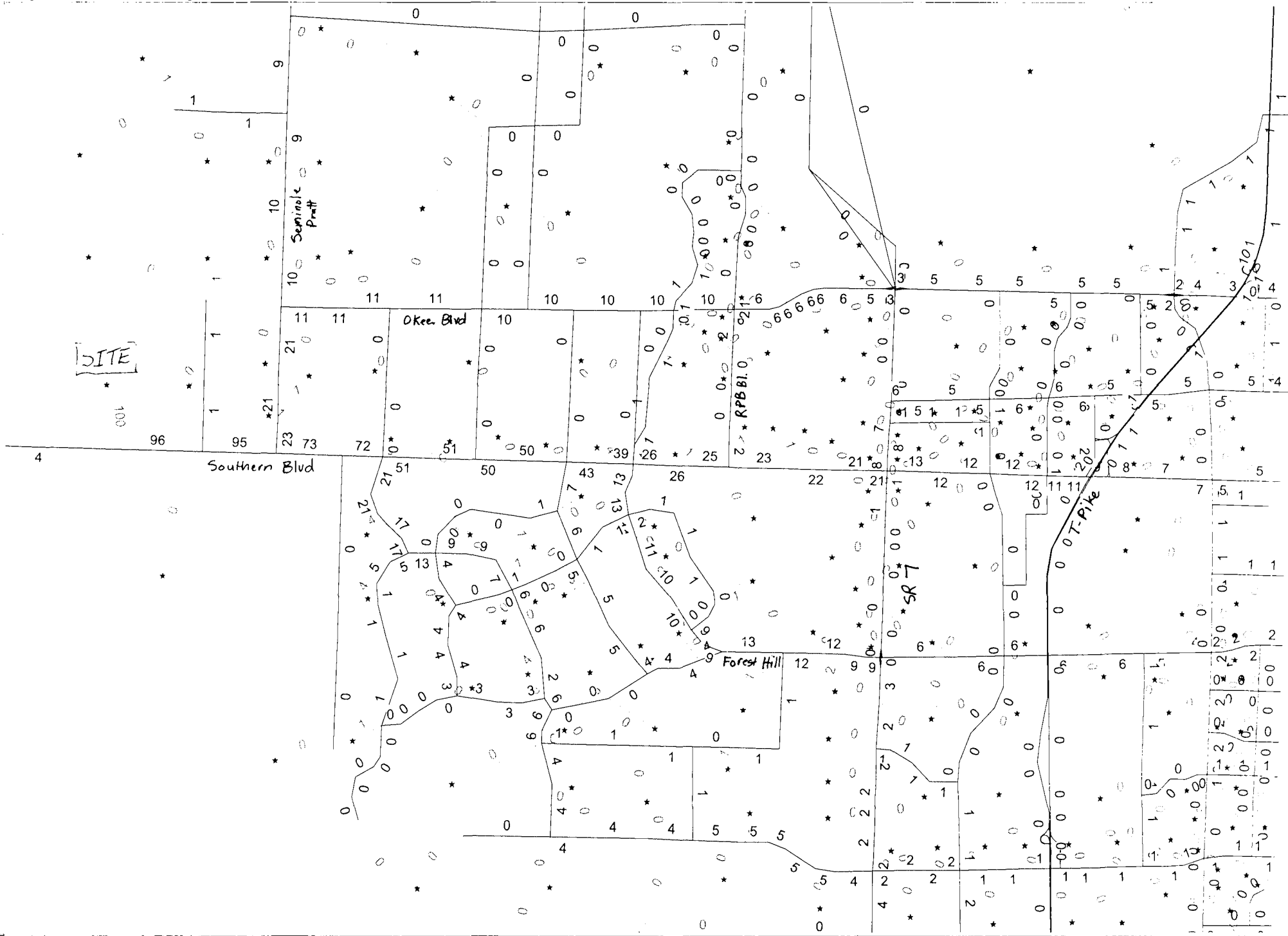


	Net External Trips for Multi-Use Development						TOTAL
	LU A	LU B	LU C	LU D	LU E		
Enter	10	0	48	887	23	971	
Exit	14	0	50	494	100	658	
Total	24	0	98	1381	123	1627	
Single-Use Trip Gen Estimate	141	2	146	1543	133	1965	17.2%

INTERNAL CAPTURE

LEGEND

- 1.0% Actual percent of trips entering or exiting a land use from another land use based on balance of number of trips
- 10.0% Estimated percent of trips entering or exiting a land use from another land use input by user
- 61 Number of trips entering or exiting a land use from another land use based on percent input by user
- 12 Balance of number of trips (lowest value) between two land uses



APPENDIX C

**COMMITTED DEVELOPMENT
YEAR 2021**

Input Data

ROAD NAME: Big Blue Trce STATION: 3422
 CURRENT YEAR: 2012 FROM: Paddock Dr
 ANALYSIS YEAR: 2021 TO: MIDPOINT
 GROWTH RATE: -0.33% COUNT DATE: 1/30/2012
 PSF: 1

Report Created: 05/03/2013

Link Analysis

Time Period Direction	AM			PM		
	2-way	NB/EB	SB/WB	2-way	NB/EB	SB/WB
Existing Volume	982	694	337	1044	324	747
Peak Volume	982	694	337	1044	324	747
Diversion(%)	0	0	0	0	0	0
Volume after Diversion	982	694	337	1044	324	747

Committed Developments	2-way	NB/EB	SB/WB	2-way	NB/EB	SB/WB	Type	% Complete
Grove Medical	16	13	4	23	6	18	NR	0%
Lazy F Ranch	0	0	0	0	0	0	NR	0%
Cypress Key	30	19	11	71	31	39	NR	0%
Southern Palm Crossing	0	0	0	0	0	0	NR	100%
Everglades Farm Equipment	0	0	0	1	0	0	NR	50%
Southern Crossing MUPD	13	11	3	31	11	20	NR	0%
Loxahatchee Retail	1	0	0	9	4	5	NR	0%
Groves Town Center	18	14	4	61	26	35	NR	0%
Loxahatchee Groves Commons	20	11	9	57	28	29	NR	0%
Palm Beach State College	14	12	2	18	9	8	NR	0%
Total Committed Developments	112	80	33	271	115	154		
Total Committed Residential	0	0	0	0	0	0		
Total Committed Non-Residential	112	80	33	271	115	154		
Double Count Reduction	0	0	0	0	0	0		
Total Discounted Committed Developments	112	80	33	271	115	154		
Historical Growth	-29	-20	-10	-31	-10	-22		
Comm Dev+1% Growth	204	145	65	369	145	224		
Growth Volume Used	204	145	65	369	145	224		
Total Volume	1186	839	402	1413	469	971		

Lanes	2L					
LOS D Capacity	1480	880	880	1480	880	880
Link Meets Test 1?	YES	YES	YES	YES	YES	NO
LOS E Capacity	1570	880	880	1570	880	880
Link Meets Test 2?	YES	YES	YES	YES	YES	NO

Input Data

ROAD NAME: Big Blue Trce STATION: 3422
 CURRENT YEAR: 2012 FROM: MIDPOINT
 ANALYSIS YEAR: 2021 TO: Southern Blvd
 GROWTH RATE: -0.33% COUNT DATE: 1/30/2012
 PSF: 1

Report Created: 05/03/2013

Link Analysis

Time Period	AM			PM		
	2-way	NB/EB	SB/WB	2-way	NB/EB	SB/WB
Existing Volume	982	694	337	1044	324	747
Peak Volume	982	694	337	1044	324	747
Diversion(%)	0	0	0	0	0	0
Volume after Diversion	982	694	337	1044	324	747

Committed Developments	2-way	NB/EB	SB/WB	2-way	NB/EB	SB/WB	Type	% Complete
Grove Medical	16	13	-4	23	-6	18	NR	0%
Lazy F Ranch	0	0	0	0	0	0	NR	0%
Cypress Key	30	19	11	71	31	39	NR	0%
Southern Palm Crossing	0	0	0	0	0	0	NR	100%
Everglades Farm Equipment	0	0	0	1	0	0	NR	50%
Southern Crossing MUPD	13	11	3	31	11	20	NR	0%
Loxahatchee Retail	1	0	0	9	4	5	NR	0%
Groves Town Center	18	14	4	61	26	35	NR	0%
Loxahatchee Groves Commons	20	11	9	57	28	29	NR	0%
Palm Beach State College	14	12	2	18	9	8	NR	0%
Total Committed Developments	112	80	33	271	115	154		
Total Committed Residential	0	0	0	0	0	0		
Total Committed Non-Residential	112	80	33	271	115	154		
Double Count Reduction	0	0	0	0	0	0		
Total Discounted Committed Developments	112	80	33	271	115	154		
Historical Growth	-29	-20	-10	-31	-10	-22		
Comm Dev+1% Growth	204	145	65	369	145	224		
Growth Volume Used	204	145	65	369	145	224		
Total Volume	1186	839	402	1413	469	971		

Lanes	2L					
LOS D Capacity	1480	880	880	1480	880	880
Link Meets Test 1?	YES	YES	YES	YES	YES	NO
LOS E Capacity	1570	880	880	1570	880	880
Link Meets Test 2?	YES	YES	YES	YES	YES	NO

Input Data

ROAD NAME: Binks Forest Dr STATION: 3436
 CURRENT YEAR: 2012 FROM: Aero Club Dr
 ANALYSIS YEAR: 2021 TO: Midpoint
 GROWTH RATE: 0.17% COUNT DATE: 1/30/2012
 PSF: 1

Report Created: 05/03/2013

Link Analysis

Time Period Direction	AM			PM		
	2-way	NB/EB	SB/WB	2-way	NB/EB	SB/WB
Existing Volume	991	666	344	804	382	426
Peak Volume	991	666	344	804	382	426
Diversion(%)	0	0	0	0	0	0
Volume after Diversion	991	666	344	804	382	426

Committed Developments

							Type	% Complete
Lazy F Ranch	0	0	0	0	0	0	NR	0%
Loxahatchee Retail	1	0	0	9	-4	5	NR	0%
Bink's Forest Residential	14	-2	12	17	-11	5	Res	0%
Bink's Corporate Center	44	25	20	151	73	78	NR	0%
Groves Town Center	27	21	-6	92	39	53	NR	0%
Loxahatchee Groves Commons	30	17	14	86	42	44	NR	0%
Palm Beach State College	14	12	2	18	9	8	NR	0%
Total Committed Developments	130	77	54	373	178	193		
Total Committed Residential	14	2	12	17	11	5		
Total Committed Non-Residential	116	75	42	356	167	188		
Double Count Reduction	4	1	3	4	3	1		
Total Discounted Committed Developments	126	-76	-51	369	-175	192		
		476	20		153	175		
Historical Growth	15	10	5	13	6	7		
Comm Dev+1% Growth	219	138	83	444	211	232		
Growth Volume Used	219	138	83	444	211	232		
Total Volume	1210	804	427	1248	593	658		

Lanes

	4LD					
LOS D Capacity	3220	1960	1960	3220	1960	1960
Link Meets Test 1?	YES	YES	YES	YES	YES	YES
LOS E Capacity	3400	1960	1960	3400	1960	1960
Link Meets Test 2?	YES	YES	YES	YES	YES	YES

Input Data

ROAD NAME: Binks Forest Dr STATION: 3436
 CURRENT YEAR: 2012 FROM: Midpoint
 ANALYSIS YEAR: 2021 TO: Southern Blvd
 GROWTH RATE: 0.17% COUNT DATE: 1/30/2012
 PSF: 1

Report Created: 05/03/2013

Link Analysis

Time Period	AM			PM		
	2-way	NB/EB	SB/WB	2-way	NB/EB	SB/WB
Existing Volume	991	666	344	804	382	426
Peak Volume	991	666	344	804	382	426
Diversion(%)	0	0	0	0	0	0
Volume after Diversion	991	666	344	804	382	426

Committed Developments

	2-way	AM NB/EB	AM SB/WB	PM 2-way	PM NB/EB	PM SB/WB	Type	% Complete
Lazy F Ranch	0	0	0	0	0	0	NR	0%
Loxahatchee Retail	1	0	0	9	4	5	NR	0%
Bink's Forest Residential	33	27	6	39	13	26	Res	0%
Bink's Corporate Center	30	13	16	100	52	48	NR	0%
Groves Town Center	27	21	6	92	39	53	NR	0%
Loxahatchee Groves Commons	30	17	14	86	42	44	NR	0%
Palm Beach State College	14	12	2	18	9	8	NR	0%
Total Committed Developments	135	90	44	344	159	184		
Total Committed Residential	33	27	6	39	13	26		
Total Committed Non-Residential	102	63	38	305	146	158		
Double Count Reduction	8	7	2	10	3	7		
Total Discounted Committed Developments	127	83	42	334	156	177		
Historical Growth	15	10	5	13	6	7		
Comm Dev+1% Growth	220	145	74	409	192	217		
Growth Volume Used	220	145	74	409	192	217		
Total Volume	1211	811	418	1213	574	643		

Lanes

	4LD					
LOS D Capacity	3220	1960	1960	3220	1960	1960
Link Meets Test 1?	YES	YES	YES	YES	YES	YES
LOS E Capacity	3400	1960	1960	3400	1960	1960
Link Meets Test 2?	YES	YES	YES	YES	YES	YES

Input Data

ROAD NAME: Seminole Pratt Whitney Rd STATION: 3420
 CURRENT YEAR: 2011 FROM: Southern Blvd
 ANALYSIS YEAR: 2021 TO: Midpoint
 GROWTH RATE: -2.62% COUNT DATE: 1/5/2011
 PSF: 1

Report Created: 05/03/2013

Link Analysis

Time Period Direction	AM			PM		
	2-way	NB/EB	SB/WB	2-way	NB/EB	SB/WB
Existing Volume	1106	278	839	1180	689	521
Peak Volume	1106	278	839	1180	689	521
Diversion(%)	0	0	0	0	0	0
Volume after Diversion	1106	278	839	1180	689	521

Committed Developments							Type	% Complete
Lazy F Ranch	0	0	0	0	0	0	NR	0%
Bink's Corporate Center	7	3	4	25	13	12	NR	0%
Groves Town Center	30	7	23	102	59	43	NR	0%
Loxahatchee Groves Commons	34	15	19	95	48	47	NR	0%
Palm Beach State College	69	9	60	88	40	47	NR	0%
Total Committed Developments	140	34	106	310	160	149		
Total Committed Residential	0	0	0	0	0	0		
Total Committed Non-Residential	140	34	106	310	160	149		
Double Count Reduction	0	0	0	0	0	0		
Total Discounted Committed Developments	140	34 0	106 85	310	160 147	149 147		
Historical Growth	-258	-65	-196	-275	-161	-121		
Comm Dev+1% Growth	256	63	194	433	232	204		
Growth Volume Used	256	63	194	433	232	204		
Total Volume	1362	341	1033	1613	921	725		

Lanes						
LOS D Capacity	1480	880	880	1480	880	880
Link Meets Test 1?	YES	YES	NO	NO	NO	YES
LOS E Capacity	1570	880	880	1570	880	880
Link Meets Test 2?	YES	YES	NO	NO	NO	YES

Input Data

ROAD NAME: Seminole Pratt Whitney Rd STATION: 3420
 CURRENT YEAR: 2011 FROM: Midpoint
 ANALYSIS YEAR: 2021 TO: Okeechobee Blvd
 GROWTH RATE: -2.62% COUNT DATE: 1/5/2011
 PSF: 1

Report Created: 05/03/2013

Link Analysis

Time Period Direction	AM			PM		
	2-way	NB/EB	SB/WB	2-way	NB/EB	SB/WB
Existing Volume	1106	278	839	1180	689	521
Peak Volume	1106	278	839	1180	689	521
Diversion(%)	0	0	0	0	0	0
Volume after Diversion	1106	278	839	1180	689	521

Committed Developments

	2-way	NB/EB	SB/WB	2-way	NB/EB	SB/WB	Type	% Complete
Lazy F Ranch	0	0	0	0	0	0	NR	0%
Bink's Corporate Center	7	-3	4	25	13	12	NR	0%
Groves Town Center	30	7	23	102	59	43	NR	0%
Loxahatchee Groves Commons	34	-15	-19	95	48	47	NR	0%
Palm Beach State College	69	-9	60	88	40	47	NR	0%
Total Committed Developments	140	34	106	310	160	149		
Total Committed Residential	0	0	0	0	0	0		
Total Committed Non-Residential	140	34	106	310	160	149		
Double Count Reduction	0	0	0	0	0	0		
Total Discounted Committed Developments	140	34 0	106 83	310	160 147	149 127		
Historical Growth	-258	-65	-196	-275	-161	-121		
Comm Dev+1% Growth	256	63	194	433	232	204		
Growth Volume Used	256	63	194	433	232	204		
Total Volume	1362	341	1033	1613	921	725		

Lanes

	1950	2L	1950	1950	1950
LOS D Capacity	1480	880	880	1480	880
Link Meets Test 1?	YES	YES	NO	NO	YES
LOS E Capacity	1570	880	880	1570	880
Link Meets Test 2?	YES	YES	NO	NO	YES

Input Data

ROAD NAME: State Road 80 STATION: 0
 CURRENT YEAR: 2012 FROM: Midpoint
 ANALYSIS YEAR: 2021 TO: County Road 880
 GROWTH RATE: 0% COUNT DATE: NA
 PSF: 0

Report Created: 05/07/2013

Link Analysis

Time Period Direction	AM			PM		
	2-way	NB/EB	SB/WB	2-way	NB/EB	SB/WB
Existing Volume	0	0	0	0	0	0
Peak Volume	0	0	0	0	0	0
Diversion(%)	0	0	0	0	0	0
Volume after Diversion	0	0	0	0	0	0

Committed Developments							Type	% Complete
No projects found	0	0	0	0	0	0	NA	0%
Total Committed Developments	0	0	0	0	0	0		
Total Committed Residential	0	0	0	0	0	0		
Total Committed Non-Residential	0	0	0	0	0	0		
Double Count Reduction	0	0	0	0	0	0		
Total Discounted Committed Developments	0	0	0	0	0	0		
Historical Growth	0	0	0	0	0	0		
Comm Dev+1% Growth	0	0	0	0	0	0		
Growth Volume Used	0	0	0	0	0	0		
Total Volume	0	0	0	0	0	0		

Lanes	4LD					
LOS D Capacity	3220	3320	3320	3220	3320	3320
Link Meets Test 1?	YES	YES	YES	YES	YES	YES
LOS E Capacity	3400	3760	3760	3400	3760	3760
Link Meets Test 2?	YES	YES	YES	YES	YES	YES

Input Data

ROAD NAME: State Road 80 STATION: 0
 CURRENT YEAR: 2012 FROM: Us Highway 98
 ANALYSIS YEAR: 2021 TO: Midpoint
 GROWTH RATE: 0% COUNT DATE: NA
 PSF: 0

Report Created: 05/07/2013

Link Analysis

Time Period Direction	AM			PM		
	2-way	NB/EB	SB/WB	2-way	NB/EB	SB/WB
Existing Volume	0	0	0	0	0	0
Peak Volume	0	0	0	0	0	0
Diversion(%)	0	0	0	0	0	0
Volume after Diversion	0	0	0	0	0	0

Committed Developments							Type	% Complete
No projects found	0	0	0	0	0	0	NA	0%
Total Committed Developments	0	0	0	0	0	0		
Total Committed Residential	0	0	0	0	0	0		
Total Committed Non-Residential	0	0	0	0	0	0		
Double Count Reduction	0	0	0	0	0	0		
Total Discounted Committed Developments	0	0	0	0	0	0		
Historical Growth	0	0	0	0	0	0		
Comm Dev+1% Growth	0	0	0	0	0	0		
Growth Volume Used	0	0	0	0	0	0		
Total Volume	0	0	0	0	0	0		

Lanes	4LD					
LOS D Capacity	3220	3320	3320	3220	3320	3320
Link Meets Test 1?	YES	YES	YES	YES	YES	YES
LOS E Capacity	3400	3760	3760	3400	3760	3760
Link Meets Test 2?	YES	YES	YES	YES	YES	YES

Input Data
 ROAD NAME: Southern Blvd STATION: 3101
 CURRENT YEAR: 2012 FROM: County Road 880
 ANALYSIS YEAR: 2021 TO: Midpoint Site
 GROWTH RATE: -5.91% COUNT DATE: 1/23/2012
 PSF: 1

Report Created: 05/03/2013

Link Analysis

Time Period Direction	AM			PM		
	2-way	NB/EB	SB/WB	2-way	NB/EB	SB/WB
Existing Volume	1229	378	876	1209	823	386
Peak Volume	1229	378	876	1209	823	386
Diversion(%)	0	0	0	0	0	0
Volume after Diversion	1229	378	876	1209	823	386

Committed Developments							Type	% Complete
Lazy F Ranch	0	0	0	0	0	0	NR	0%
Groves Town Center	15	12	3	51	-22	30	NR	0%
Loxahatchee Groves Commons	17	9	8	48	23	24	NR	0%
Palm Beach State College	41	36	5	53	28	24	NR	0%
Total Committed Developments	73	57	16	152	73	78		
Total Committed Residential	0	0	0	0	0	0		
Total Committed Non-Residential	73	57	16	152	73	78		
Double Count Reduction	0	0	0	0	0	0		
 Total Discounted Committed Developments	 73	 -57	 -16	 152	 73	 78		
 Historical Growth	 -519	 -160	 -370	 -511	 -348	 -163		
Comm Dev+1% Growth	188	92	98	265	150	114		
Growth Volume Used	188	92	98	265	150	114		
Total Volume	1417	470	974	1474	973	500		

Lanes	4LD					
LOS D Capacity	3220	3320	3320	3220	3320	3320
Link Meets Test 1?	YES	YES	YES	YES	YES	YES
LOS E Capacity	3400	3760	3760	3400	3760	3760
Link Meets Test 2?	YES	YES	YES	YES	YES	YES

ROAD NAME: Southern Blvd
 CURRENT YEAR: 2012
 ANALYSIS YEAR: 2021
 GROWTH RATE: -8.02%

Input Data
 STATION: 3443
 FROM: Midpoint
 TO: Binks Forest Dr
 COUNT DATE: 2/27/2012
 PSF: 1

Report Created: 05/03/2013

Link Analysis

Time Period Direction	AM			PM		
	2-way	NB/EB	SB/WB	2-way	NB/EB	SB/WB
Existing Volume	1968	1091	938	2050	1091	1007
Peak Volume	1968	1091	938	2050	1091	1007
Diversion(%)	0	0	0	0	0	0
Volume after Diversion	1968	1091	938	2050	1091	1007

Committed Developments							Type	% Complete
Lazy F Ranch	0	0	0	0	0	0	NR	0%
Loxahatchee Retail	2	-1	1	26	-13	14	NR	0%
Bink's Forest Residential	9	2	8	11	7	4	Res	0%
Bink's Corporate Center	7	-4	3	25	12	13	NR	0%
Groves Town Center	45	35	10	153	65	89	NR	0%
Loxahatchee Groves Commons	54	24	30	152	77	75	NR	0%
Palm Beach State College	96	13	84	123	56	66	NR	0%
Total Committed Developments	213	79	136	490	230	261		
Total Committed Residential	9	2	8	11	7	4		
Total Committed Non-Residential	204	77	128	479	223	257		
Double Count Reduction	2	1	2	3	2	1		
Total Discounted Committed Developments	211	78 59	134 114	487	-228 175	-260 240		
Historical Growth	-1040	-577	-496	-1083	-577	-532		
Comm Dev+1% Growth	395	180	222	679	330	354		
Growth Volume Used	395	180	222	679	330	354		
Total Volume	2363	1271	1160	2729	1421	1361		

Lanes	4LD					
LOS D Capacity	3220	1960	1960	3220	1960	1960
Link Meets Test 1?	YES	YES	YES	YES	YES	YES
LOS E Capacity	3400	1960	1960	3400	1960	1960
Link Meets Test 2?	YES	YES	YES	YES	YES	YES

Input Data

ROAD NAME: Southern Blvd STATION: 3431
 CURRENT YEAR: 2012 FROM: Binks Forest Dr
 ANALYSIS YEAR: 2021 TO: Midpoint
 GROWTH RATE: 1.68% COUNT DATE: 2/27/2012
 PSF: 1

Report Created: 05/03/2013

Link Analysis

Time Period Direction	AM			PM		
	2-way	NB/EB	SB/WB	2-way	NB/EB	SB/WB
Existing Volume	2928	1544	1564	2954	1553	1463
Peak Volume	2928	1544	1564	2954	1553	1463
Diversion(%)	0	0	0	0	0	0
Volume after Diversion	2928	1544	1564	2954	1553	1463

Committed Developments							Type	% Complete
Palms West Medical	5	4	1	6	2	5	NR	92%
Grove Medical	16	-13	4	23	-6	18	NR	0%
Palms West Hospital	4	3	1	4	2	3	NR	95%
Lazy F Ranch	0	0	0	0	0	0	NR	0%
Cypress Key	14	9	5	33	14	18	NR	0%
Southern Palm Crossing	0	0	0	0	0	0	NR	100%
Everglades Farm Equipment	14	10	5	27	13	14	NR	50%
Southern Crossing MUPD	13	11	3	31	11	20	NR	0%
Loxahatchee Retail	2	2	1	35	17	18	NR	0%
Bink's Forest Residential	24	20	4	28	9	19	Res	0%
Bink's Corporate Center	22	10	12	75	39	36	NR	0%
Groves Town Center	37	29	9	128	54	74	NR	0%
Loxahatchee Groves Commons	57	26	32	162	82	80	NR	0%
Palm Beach State College	138	18	120	175	81	95	NR	0%
Total Committed Developments	346	155	197	727	330	400		
Total Committed Residential	24	20	4	28	9	19		
Total Committed Non-Residential	322	135	193	699	321	381		
Double Count Reduction	6	5	1	7	2	5		
Total Discounted Committed Developments	340	150	196	720	328	395		
Historical Growth	473	249	253	477	251	236		
Comm Dev+1% Growth	614	295	343	997	473	532		
Growth Volume Used	614	295	343	997	473	532		
Total Volume	3542	1839	1907	3951	2026	1995		

Lanes	4LD					
LOS D Capacity	3220	1960	1960	3220	1960	1960
Link Meets Test 1?	NO	YES	YES	NO	NO	NO
LOS E Capacity	3400	1960	1960	3400	1960	1960
Link Meets Test 2?	NO	YES	YES	NO	NO	NO

Input Data

ROAD NAME: Southern Blvd STATION: 3431
 CURRENT YEAR: 2012 FROM: MIDPOINT
 ANALYSIS YEAR: 2021 TO: Big Blue Trce
 GROWTH RATE: 1.68% COUNT DATE: 2/27/2012
 PSF: 1

Report Created: 05/03/2013

Link Analysis

Time Period	AM			PM		
	2-way	NB/EB	SB/WB	2-way	NB/EB	SB/WB
Existing Volume	2928	1544	1564	2954	1553	1463
Peak Volume	2928	1544	1564	2954	1553	1463
Diversion(%)	0	0	0	0	0	0
Volume after Diversion	2928	1544	1564	2954	1553	1463

Committed Developments							Type	% Complete
Palms West Medical	5	4	1	6	2	5	NR	92%
Grove Medical	16	13	4	23	6	18	NR	0%
Palms West Hospital	4	3	1	4	2	3	NR	95%
Lazy F Ranch	0	0	0	0	0	0	NR	0%
Cypress Key	14	9	5	33	14	18	NR	0%
Southern Palm Crossing	0	0	0	0	0	0	NR	100%
Everglades Farm Equipment	14	10	5	27	13	14	NR	50%
Southern Crossing MUPD	54	11	42	122	78	44	NR	0%
Loxahatchee Retail	4	1	2	52	27	25	NR	0%
Bink's Forest Residential	24	20	4	28	9	19	Res	0%
Bink's Corporate Center	22	10	12	75	39	36	NR	0%
Groves Town Center	51	12	39	173	100	73	NR	0%
Loxahatchee Groves Commons	57	26	32	162	82	80	NR	0%
Palm Beach State College	138	18	120	175	81	95	NR	0%
Total Committed Developments	403	137	267	880	453	430		
Total Committed Residential	24	20	4	28	9	19		
Total Committed Non-Residential	379	117	263	852	444	411		
Double Count Reduction	6	5	1	7	2	5		
Total Discounted Committed Developments	397	132 63	266	873	451	425 275		
Historical Growth	473	249	253	477	251	236		
Comm Dev+1% Growth	671	277	413	1150	596	562		
Growth Volume Used	671	277	413	1150	596	562		
Total Volume	3599	1821	1977	4104	2149	2025		

Lanes	4LD					
LOS D Capacity	3220	1960	1960	3220	1960	1960
Link Meets Test 1?	NO	YES	NO	NO	NO	NO
LOS E Capacity	3400	1960	1960	3400	1960	1960
Link Meets Test 2?	NO	YES	NO	NO	NO	NO

Input Data

ROAD NAME: Southern Blvd STATION: 0
 CURRENT YEAR: 2012 FROM: Big Blue Trce
 ANALYSIS YEAR: 2021 TO: Midpoint
 GROWTH RATE: 0% COUNT DATE: NA
 PSF: 0

Report Created: 05/03/2013

Link Analysis

Time Period	AM			PM		
	2-way	NB/EB	SB/WB	2-way	NB/EB	SB/WB
Direction						
Existing Volume	0	0	0	0	0	0
Peak Volume	0	0	0	0	0	0
Diversion(%)	0	0	0	0	0	0
Volume after Diversion	0	0	0	0	0	0

Committed Developments							Type	% Complete
Palms West Medical	9	7	2	11	3	8	NR	92%
Grove Medical	12	3	9	17	13	4	NR	0%
Palms West Hospital	7	4	2	7	3	5	NR	95%
Lazy F Ranch	0	0	0	0	0	0	NR	0%
Western Plaza	1	1	0	2	1	1	NR	89%
Cypress Key	44	28	16	103	46	58	NR	0%
Southern Palm Crossing	0	0	0	0	0	0	NR	100%
Everglades Farm Equipment	15	10	5	29	14	15	NR	50%
Wellington Mall	1	1	1	5	2	2	NR	90%
Southern Crossing MUPD	40	8	32	92	59	33	NR	0%
Loxahatchee Retail	3	1	2	39	20	19	NR	0%
Southern Center	1	1	1	7	3	4	NR	90%
Groves Town Center	33	7	25	112	65	47	NR	0%
Loxahatchee Groves Commons	37	17	20	105	53	51	NR	0%
Palm Beach State College	124	16	108	158	72	85	NR	0%
Total Committed Developments	327	104	223	687	354	332		
Total Committed Residential	0	0	0	0	0	0		
Total Committed Non-Residential	327	104	223	687	354	332		
Double Count Reduction	0	0	0	0	0	0		
Total Discounted Committed Developments	327	104	223	687	354	332		
Historical Growth	0	0	0	0	0	0		
Comm Dev+1% Growth	327	104	223	687	354	332		
Growth Volume Used	327	104	223	687	354	332		
Total Volume	327	104	223	687	354	332		

Lanes	4LD					
LOS D Capacity	3220	1770	1770	3220	1770	1770
Link Meets Test 1?	YES	YES	YES	YES	YES	YES
LOS E Capacity	3400	1870	1870	3400	1870	1870
Link Meets Test 2?	YES	YES	YES	YES	YES	YES

Input Data

ROAD NAME: Southern Blvd STATION: 3413
 CURRENT YEAR: 2012 FROM: MIDPOINT
 ANALYSIS YEAR: 2021 TO: Crestwood Blvd
 GROWTH RATE: -0.62% COUNT DATE: 2/26/2012
 PSF: 1

Report Created: 05/03/2013

Link Analysis

Time Period	AM			PM		
	2-way	NB/EB	SB/WB	2-way	NB/EB	SB/WB
Existing Volume	3478	1913	1565	3465	1670	1845
Peak Volume	3478	1913	1565	3465	1670	1845
Diversion(%)	0	0	0	0	0	0
Volume after Diversion	3478	1913	1565	3465	1670	1845

Committed Developments							Type	% Complete
Target Center	0	0	0	0	0	0	NR	100%
Palms West Medical	16	3	12	18	13	5	NR	92%
Grove Medical	12	-3	-9	17	-13	-4	NR	0%
Palms West Hospital	12	4	8	12	8	5	NR	95%
Lazy F Ranch	0	0	0	0	0	0	NR	0%
Western Plaza	1	1	0	2	1	1	NR	89%
Cypress Key	44	28	-16	103	46	58	NR	0%
Southern Palm Crossing	0	0	0	0	0	0	NR	100%
Everglades Farm Equipment	9	3	6	17	9	8	NR	50%
Wellington Mall	1	1	1	5	2	2	NR	90%
Southern Crossing MUPD	40	-8	32	92	59	33	NR	0%
Loxahatchee Retail	3	-1	-2	39	-20	-19	NR	0%
Southern Center	1	1	1	7	3	4	NR	90%
Groves Town Center	33	-7	-25	112	65	47	NR	0%
Loxahatchee Groves Commons	37	17	-20	105	53	51	NR	0%
Palm Beach State College	124	-16	108	158	72	85	NR	0%
Total Committed Developments	333	93	240	687	364	322		
Total Committed Residential	0	0	0	0	0	0		
Total Committed Non-Residential	333	93	240	687	364	322		
Double Count Reduction	0	0	0	0	0	0		
Total Discounted Committed Developments	333	-93	240	687	-364	322		
		41	165		-51	273		
Historical Growth	-188	-104	-85	-188	-90	-100		
Comm Dev+1% Growth	659	272	387	1012	520	495		
Growth Volume Used	659	272	387	1012	520	495		
Total Volume	4137	2185	1952	4477	2190	2340		

Lanes	6LD					
LOS D Capacity	4880	2680	2680	4880	2680	2680
Link Meets Test 1?	YES	YES	YES	YES	YES	YES
LOS E Capacity	5150	2830	2830	5150	2830	2830
Link Meets Test 2?	YES	YES	YES	YES	YES	YES

Input Data

ROAD NAME: Southern Blvd STATION: 3417
 CURRENT YEAR: 2012 FROM: Crestwood Blvd
 ANALYSIS YEAR: 2021 TO: MIDPOINT
 GROWTH RATE: 0.98% COUNT DATE: 2/27/2012
 PSF: 1

Report Created: 05/03/2013

Link Analysis

Time Period Direction	AM			PM		
	2-way	NB/EB	SB/WB	2-way	NB/EB	SB/WB
Existing Volume	4298	2863	1486	4407	1892	2699
Peak Volume	4298	2863	1486	4407	1892	2699
Diversion(%)	0	0	0	0	0	0
Volume after Diversion	4298	2863	1486	4407	1892	2699

Committed Developments							Type	% Complete
Target Center	0	0	0	0	0	0	NR	100%
Palms West Medical	7	2	6	8	6	2	NR	92%
Groves at Royal Palm	0	0	0	0	0	0	NR	100%
Grove Medical	5	1	4	7	6	2	NR	0%
Martingale Meadows	10	3	8	15	9	5	Res	0%
Palms West Hospital	5	2	4	6	4	2	NR	95%
Lazy F Ranch	0	0	0	0	0	0	NR	0%
Rubin Commercial	40	22	18	134	65	69	NR	0%
Western Plaza	8	4	4	15	7	8	NR	89%
Isla Verde	1	1	1	4	2	2	NR	68%
Cypress Key	134	85	49	315	139	176	NR	0%
Southern Palm Crossing	0	0	0	0	0	0	NR	100%
Olympia	5	1	4	5	3	2	Res	90%
Tract 115-Village Center	0	0	0	0	0	0	NR	0%
Everglades Farm Equipment	6	2	4	12	6	6	NR	50%
Wellington Mall	1	0	0	2	1	1	NR	90%
Southern Crossing MUPD	23	5	18	52	33	19	NR	0%
Southern Center	5	3	2	25	12	13	NR	90%
Seven Eleven	34	17	17	35	17	17	NR	0%
Groves Town Center	10	2	8	36	21	15	NR	0%
Loxahatchee Groves Commons	12	5	7	33	17	16	NR	0%
Palm Beach State College	41	5	36	53	24	28	NR	0%
Total Committed Developments	347	160	190	757	372	383		
Total Committed Residential	15	4	12	20	12	7		
Total Committed Non-Residential	332	156	178	737	360	376		
Double Count Reduction	4	1	3	5	3	2		
Total Discounted Committed Developments	343	159	187	752	369	381		
Historical Growth	392	261	136	402	173	246		
Comm Dev+1% Growth	746	427	326	1165	546	634		
Growth Volume Used	746	427	326	1165	546	634		
Total Volume	5044	3290	1812	5572	2438	3333		

Lanes	6LD					
LOS D Capacity	4880	2940	2940	4880	2940	2940
Link Meets Test 1?	NO	NO	YES	NO	YES	NO
LOS E Capacity	5150	2940	2940	5150	2940	2940
Link Meets Test 2?	YES	NO	YES	NO	YES	NO

Input Data

ROAD NAME: Southern Blvd STATION: 3437
 CURRENT YEAR: 2012 FROM: Midpoint
 ANALYSIS YEAR: 2021 TO: Royal Palm Beach Blvd
 GROWTH RATE: 1.06% COUNT DATE: 2/27/2012
 PSF: 1

Report Created: 05/03/2013

Link Analysis

Time Period Direction	AM			PM		
	2-way	NB/EB	SB/WB	2-way	NB/EB	SB/WB
Existing Volume	4191	2776	1467	4425	1862	2667
Peak Volume	4191	2776	1467	4425	1862	2667
Diversion(%)	0	0	0	0	0	0
Volume after Diversion	4191	2776	1467	4425	1862	2667

Committed Developments							Type	% Complete
Target Center	0	0	0	0	0	0	NR	100%
Palms West Medical	7	2	6	8	6	2	NR	92%
Groves at Royal Palm	0	0	0	0	0	0	NR	100%
Grove Medical	5	1	4	7	6	2	NR	0%
Martingale Meadows	10	3	8	15	9	5	Res	0%
Palms West Hospital	5	2	4	6	4	2	NR	95%
Lazy F Ranch	0	0	0	0	0	0	NR	0%
Rubin Commercial	40	22	18	134	65	69	NR	0%
Western Plaza	8	4	4	15	7	8	NR	89%
Isla Verde	1	1	1	4	2	2	NR	68%
Cypress Key	66	24	42	155	87	68	NR	0%
Southern Palm Crossing	0	0	0	0	0	0	NR	100%
Olympia	5	1	4	5	3	2	Res	90%
Tract 115-Village Center	0	0	0	0	0	0	NR	0%
Everglades Farm Equipment	6	2	4	12	6	6	NR	50%
Wellington Mall	1	0	0	2	1	1	NR	90%
Southern Crossing MUPD	23	5	18	52	33	19	NR	0%
Southern Center	5	3	2	25	12	13	NR	90%
Seven Eleven	34	17	17	35	17	17	NR	0%
Groves Town Center	10	2	8	36	21	15	NR	0%
Loxahatchee Groves Commons	12	5	7	33	17	16	NR	0%
Palm Beach State College	41	5	36	53	24	28	NR	0%
Total Committed Developments	279	99	183	597	320	275		
Total Committed Residential	15	4	12	20	12	7		
Total Committed Non-Residential	264	95	171	577	308	268		
Double Count Reduction	4	1	3	5	3	2		
Total Discounted Committed Developments	275	98 15	180 10	592	317 206	273 173		
Historical Growth	418	277	146	442	186	266		
Comm Dev+1% Growth	668	358	317	1007	491	523		
Growth Volume Used	668	358	317	1007	491	523		
Total Volume	4859	3134	1784	5432	2353	3190		

Lanes	6LD					
LOS D Capacity	4880	2940	2940	4880	2940	2940
Link Meets Test 1?	YES	NO	YES	NO	YES	NO
LOS E Capacity	5150	2940	2940	5150	2940	2940
Link Meets Test 2?	YES	NO	YES	NO	YES	NO

Input Data

ROAD NAME: Southern Blvd STATION: 3405 Report Created: 05/03/2013
CURRENT YEAR: 2012 FROM: Royal Palm Beach Blvd
ANALYSIS YEAR: 2021 TO: MIDPOINT
GROWTH RATE: 0% COUNT DATE: NA
PSF: 0

Link Analysis

Time Period	AM			PM		
	2-way	NB/EB	SB/WB	2-way	NB/EB	SB/WB
Existing Volume	0	0	0	0	0	0
Peak Volume	0	0	0	0	0	0
Diversion(%)	0	0	0	0	0	0
Volume after Diversion	0	0	0	0	0	0

Committed Developments							Type	% Complete
Target Center	0	0	0	0	0	0	NR	100%
Palms West Medical	5	1	4	6	4	2	NR	92%
Groves at Royal Palm	0	0	0	0	0	0	NR	100%
Martingale Meadows	15	-4	-11	22	-14	8	Res	0%
Palms West Hospital	4	1	3	4	3	2	NR	95%
Lazy F Ranch	0	0	0	0	0	0	NR	0%
Rubin Commercial	66	36	29	221	107	114	NR	0%
Western Plaza	11	6	5	20	10	10	NR	89%
Isla Verde	14	7	6	45	21	23	NR	68%
Cypress Key	54	20	34	127	71	56	NR	0%
Southern Palm Crossing	0	0	0	0	0	0	NR	100%
Ching SR 7	0	0	0	0	0	0	NR	100%
Olympia	8	2	6	8	5	3	Res	90%
United Auto Group	0	0	0	0	0	0	NR	100%
Village Professional Park	26	-21	-5	40	-16	-25	NR	0%
Royal Palm Retail	0	0	0	0	0	0	NR	100%
Tract 115-Village Center	0	0	0	0	0	0	NR	0%
Wellington Mall	3	2	1	12	6	6	NR	90%
Shoppes At Southern Pines	3	2	1	12	6	6	NR	72%
Wellington Regional Medical Center	40	28	12	47	15	31	NR	54%
Pioneer Trail	3	-1	-3	5	-3	-2	Res	40%
Cypress Point MUPD	14	12	3	18	-5	-13	NR	0%
Southern Center	9	5	3	40	19	21	NR	90%
Aldi / Royal Palm Industrial	30	-21	-10	13	-3	-10	NR	5%
Village Green	14	-9	-5	27	12	-15	NR	0%
Enclave at Royal Palm Beach	8	-2	-7	11	-7	-4	Res	0%
Seven Eleven	51	-26	25	51	-26	-26	NR	0%
Palm Beach Auto Auction	13	-12	-1	22	12	11	NR	50%
03-W Marginal Elementary	0	0	0	0	0	0	NR	100%
PBC Stockade	12	-12	-1	13	-2	-11	NR	36%
Total Committed Developments	403	230	175	764	367	399		
Total Committed Residential	34	9	27	46	29	17		
Total Committed Non-Residential	369	221	148	718	338	382		
Double Count Reduction	9	2	7	12	7	4		
Total Discounted Committed Developments	394	-228	-168	752	-360	-395		
		54	11		167	204		
Historical Growth	0	0	0	0	0	0		
Comm Dev+1% Growth	394	228	168	752	360	395		
Growth Volume Used	394	228	168	752	360	395		
Total Volume	394	228	168	752	360	395		

Lanes	8LD					
LOS D Capacity	6530	3940	3940	6530	3940	3940
Link Meets Test 1?	YES	YES	YES	YES	YES	YES
LOS E Capacity	6880	3940	3940	6880	3940	3940
Link Meets Test 2?	YES	YES	YES	YES	YES	YES

Input Data

ROAD NAME: Southern Blvd STATION: 3409
 CURRENT YEAR: 2012 FROM: Midpoint
 ANALYSIS YEAR: 2021 TO: S State Road 7
 GROWTH RATE: -1.77% COUNT DATE: 2/22/2012
 PSF: 1

Report Created: 05/03/2013

Link Analysis

Time Period	AM			PM		
	2-way	NB/EB	SB/WB	2-way	NB/EB	SB/WB
Existing Volume	4452	3178	1570	4805	2297	2705
Peak Volume	4452	3178	1570	4805	2297	2705
Diversion(%)	0	0	0	0	0	0
Volume after Diversion	4452	3178	1570	4805	2297	2705

Committed Developments							Type	% Complete
Target Center	0	0	0	0	0	0	NR	100%
Palms West Medical	5	1	4	6	4	2	NR	92%
Groves at Royal Palm	0	0	0	0	0	0	NR	100%
Martingale Meadows	45	34	11	65	24	41	Res	0%
Palms West Hospital	4	1	3	4	3	2	NR	95%
Lazy F Ranch	0	0	0	0	0	0	NR	0%
Rubin Commercial	107	48	60	361	186	175	NR	0%
Western Plaza	11	6	5	20	10	10	NR	89%
Isla Verde	14	7	6	45	21	23	NR	68%
Cypress Key	54	20	34	127	71	56	NR	0%
Southern Palm Crossing	0	0	0	0	0	0	NR	100%
Ching SR 7	0	0	0	0	0	0	NR	100%
Olympia	8	2	6	8	5	3	Res	90%
United Auto Group	0	0	0	0	0	0	NR	100%
Village Professional Park	26	21	5	40	16	25	NR	0%
Royal Palm Retail	0	0	0	0	0	0	NR	100%
Tract 115-Village Center	0	0	0	0	0	0	NR	0%
Wellington Mall	3	2	1	12	6	6	NR	90%
Shoppes At Southern Pines	3	2	1	12	6	6	NR	72%
Wellington Regional Medical Center	40	28	12	47	15	31	NR	54%
Pioneer Trail	3	1	3	5	3	2	Res	40%
Cypress Point MUPD	14	12	3	18	5	13	NR	0%
Southern Center	4	1	2	17	9	8	NR	90%
Aldi / Royal Palm Industrial	30	21	10	13	3	10	NR	5%
Village Green	14	9	5	27	12	15	NR	0%
Enclave at Royal Palm Beach	8	2	7	11	7	4	Res	0%
Seven Eleven	51	26	25	51	26	26	NR	0%
Palm Beach Auto Auction	13	12	1	22	12	11	NR	50%
03-W Marginal Elementary	0	0	0	0	0	0	NR	100%
PBC Stockade	12	12	1	13	2	11	NR	36%
Total Committed Developments	469	268	205	924	446	480		
Total Committed Residential	64	39	27	89	39	50		
Total Committed Non-Residential	405	229	178	835	407	430		
Double Count Reduction	16	10	7	22	10	13		
Total Discounted Committed Developments	453	258	198	902	436	467		
Historical Growth	-662	-472	-233	-714	-341	-402		
Comm Dev+1% Growth	870	556	345	1352	651	720		
Growth Volume Used	870	556	345	1352	651	720		
Total Volume	5322	3734	1915	6157	2948	3425		

Lanes	8LD					
LOS D Capacity	6530	3940	3940	6530	3940	3940
Link Meets Test 1?	YES	YES	YES	YES	YES	YES
LOS E Capacity	6880	3940	3940	6880	3940	3940
Link Meets Test 2?	YES	YES	YES	YES	YES	YES

Input Data

ROAD NAME: Southern Blvd STATION: 3415
 CURRENT YEAR: 2012 FROM: N State Road 7
 ANALYSIS YEAR: 2021 TO: Midpoint
 GROWTH RATE: 5.11% COUNT DATE: 2/22/2012
 PSF: 1

Report Created: 05/03/2013

Link Analysis

Time Period Direction	AM			PM		
	2-way	NB/EB	SB/WB	2-way	NB/EB	SB/WB
Existing Volume	5130	3344	1830	4897	2083	2936
Peak Volume	5130	3344	1830	4897	2083	2936
Diversion(%)	0	0	0	0	0	0
Volume after Diversion	5130	3344	1830	4897	2083	2936

Committed Developments							Type	% Complete
Target Center	0	0	0	0	0	0	NR	100%
Palms West Medical	1	0	1	2	1	0	NR	92%
Groves at Royal Palm	0	0	0	0	0	0	NR	100%
Kings Academy	12	8	4	4	2	2	NR	70%
Martingale Meadows	24	18	6	34	13	22	Res	0%
Palms West Hospital	1	0	1	1	1	0	NR	95%
Lazy F Ranch	0	0	0	0	0	0	NR	0%
ProLogis Pike Road	41	34	7	37	8	29	NR	0%
Rubin Commercial	26	12	14	87	45	42	NR	0%
Western Plaza	11	6	5	20	10	10	NR	89%
Belvedere Commerce Center	11	6	5	27	13	14	NR	0%
Isia Verde	9	4	5	30	15	14	NR	68%
Southern Palm Crossing	0	0	0	0	0	0	NR	100%
Ching SR 7	0	0	0	0	0	0	NR	100%
Olympia	6	5	2	6	2	4	Res	90%
United Auto Group	0	0	0	0	0	0	NR	100%
Village Professional Park	19	3	16	29	18	11	NR	0%
Royal Palm Retail	0	0	0	0	0	0	NR	100%
Fox DRI	2	1	1	5	2	2	NR	94%
Wellington Mall	3	1	2	12	6	6	NR	90%
Shoppes At Southern Pines	8	5	3	37	18	19	NR	72%
Wellington Regional Medical Center	40	12	28	47	31	15	NR	54%
Pioneer Trail	9	6	2	12	5	8	Res	40%
Cypress Point MUPD	43	36	8	53	14	40	NR	0%
Southern Center	3	1	2	15	8	7	NR	90%
Wellington View	13	6	7	9	5	4	Res	65%
Aldi / Royal Palm Industrial	30	10	21	13	10	3	NR	5%
Village Green	14	5	9	27	15	12	NR	0%
Enclave at Royal Palm Beach	23	18	5	28	10	18	Res	0%
Seven Eleven	49	24	25	50	25	25	NR	0%
Palm Beach Auto Auction	42	38	4	70	37	34	NR	50%
O3-W Marginal Elementary	0	0	0	0	0	0	NR	100%
PBC Stockade	50	47	3	53	9	44	NR	36%
Total Committed Developments	490	306	186	708	323	385		
Total Committed Residential	75	53	22	89	35	56		
Total Committed Non-Residential	415	253	164	619	288	329		
Double Count Reduction	19	13	6	22	9	14		
Total Discounted Committed Developments	471	293 152	180	686	314	371 247		
Historical Growth	2900	1891	1035	2769	1178	1660		
Comm Dev+1% Growth	952	606	351	1145	509	646		
Growth Volume Used	2900	1891	1035	2769	1178	1660		
Total Volume	8030	5235	2865	7666	3261	4596		

Lanes	8LD					
LOS D Capacity	6530	3940	3940	6530	3940	3940
Link Meets Test 1?	NO	NO	YES	NO	YES	NO
LOS E Capacity	6880	3940	3940	6880	3940	3940
Link Meets Test 2?	NO	NO	YES	NO	YES	NO

Input Data

ROAD NAME: Southern Blvd STATION: 3415 Report Created: 05/03/2013
 CURRENT YEAR: 2012 FROM: Midpoint
 ANALYSIS YEAR: 2021 TO: Sansburys Way
 GROWTH RATE: 5.11% COUNT DATE: 2/22/2012
 PSF: 1

Link Analysis

Time Period Direction	AM			PM		
	2-way	NB/EB	SB/WB	2-way	NB/EB	SB/WB
Existing Volume	5130	3344	1830	4897	2083	2936
Peak Volume	5130	3344	1830	4897	2083	2936
Diversion(%)	0	0	0	0	0	0
Volume after Diversion	5130	3344	1830	4897	2083	2936

Committed Developments							Type	% Complete
Target Center	0	0	0	0	0	0	NR	100%
Palms West Medical	1	0	1	2	1	0	NR	92%
Groves at Royal Palm	0	0	0	0	0	0	NR	100%
Kings Academy	12	8	4	4	2	2	NR	70%
Martingale Meadows	24	18	6	34	13	22	Res	0%
Palms West Hospital	1	0	1	1	1	0	NR	95%
Lazy F Ranch	0	0	0	0	0	0	NR	0%
ProLogis Pike Road	41	34	7	37	8	29	NR	0%
Rubin Commercial	26	12	14	87	45	42	NR	0%
Western Plaza	8	4	4	15	8	7	NR	89%
Belvedere Commerce Center	11	6	5	27	13	14	NR	0%
Isla Verde	9	4	5	30	15	14	NR	68%
Southern Palm Crossing	0	0	0	0	0	0	NR	100%
Ching SR 7	0	0	0	0	0	0	NR	100%
Olympia	6	5	2	6	2	4	Res	90%
United Auto Group	0	0	0	0	0	0	NR	100%
Village Professional Park	19	3	16	29	18	11	NR	0%
Royal Palm Retail	0	0	0	0	0	0	NR	100%
Fox DRI	2	1	1	5	2	2	NR	94%
Wellington Mall	3	1	2	12	6	6	NR	90%
Shoppes At Southern Pines	8	5	3	37	18	19	NR	72%
Wellington Regional Medical Center	40	12	28	47	31	15	NR	54%
Pioneer Trail	9	6	2	12	5	8	Res	40%
Cypress Point MUPD	43	36	8	53	14	40	NR	0%
Southern Center	3	1	2	15	8	7	NR	90%
Wellington View	13	6	7	9	5	4	Res	65%
Aldi / Royal Palm Industrial	30	10	21	13	10	3	NR	5%
Village Green	14	5	9	27	15	12	NR	0%
Enclave at Royal Palm Beach	23	18	5	28	10	18	Res	0%
Seven Eleven	49	24	25	50	25	25	NR	0%
Palm Beach Auto Auction	42	38	4	70	37	34	NR	50%
03-W Marginal Elementary	0	0	0	0	0	0	NR	100%
PBC Stockade	100	7	93	106	89	17	NR	36%
Total Committed Developments	537	264	275	756	401	355		
Total Committed Residential	75	53	22	89	35	56		
Total Committed Non-Residential	462	211	253	667	366	299		
Double Count Reduction	19	13	6	22	9	14		
Total Discounted Committed Developments	518	251	269	734	392	341		
Historical Growth	2900	1891	1035	2769	1178	1660		
Comm Dev+1% Growth	999	564	440	1193	587	616		
Growth Volume Used	2900	1891	1035	2769	1178	1660		
Total Volume	8030	5235	2865	7666	3261	4596		

Lanes	8LD					
LOS D Capacity	6530	3940	3940	6530	3940	3940
Link Meets Test 1?	NO	NO	YES	NO	YES	NO
LOS E Capacity	6880	3940	3940	6880	3940	3940
Link Meets Test 2?	NO	NO	YES	NO	YES	NO

**COMMITTED DEVELOPMENT
YEAR 2017**

Input Data

ROAD NAME: Seminole Pratt Whitney Rd STATION: 3420
 CURRENT YEAR: 2011 FROM: Southern Blvd
 ANALYSIS YEAR: 2017 TO: Midpoint
 GROWTH RATE: -2.62% COUNT DATE: 1/5/2011
 PSF: 1

Report Created: 05/08/2013

Link Analysis

Time Period Direction	AM			PM		
	2-way	NB/EB	SB/WB	2-way	NB/EB	SB/WB
Existing Volume	1106	278	839	1180	689	521
Peak Volume	1106	278	839	1180	689	521
Diversion(%)	0	0	0	0	0	0
Volume after Diversion	1106	278	839	1180	689	521

Committed Developments							Type	% Complete
Lazy F Ranch	0	0	0	0	0	0	NR	0%
Bink's Corporate Center	7	0	0	25	0	0	NR	0%
Groves Town Center	30	0	23	102	59	43	NR	0%
Loxahatchee Groves Commons	34	0	0	95	48	47	NR	0%
Palm Beach State College	69	0	60	88	40	47	NR	0%
Total Committed Developments	140	0	83	310	147	137		
Total Committed Residential	0	0	0	0	0	0		
Total Committed Non-Residential	140	0	83	310	147	137		
Double Count Reduction	0	0	0	0	0	0		
Total Discounted Committed Developments	140	0	83	310	147	137		
Historical Growth	-163	-41	-124	-174	-101	-77		
Comm Dev+1% Growth	208	17	135	383	189	169		
Growth Volume Used	208	17	135	383	189	169		
Total Volume	1314	295	974	1563	878	690		

Lanes	1987	2011	1987	2011	1987	2011
LOS D Capacity	1480	880	880	1480	880	880
Link Meets Test 1?	YES	YES	NO	NO	YES	YES
LOS E Capacity	1570	880	880	1570	880	880
Link Meets Test 2?	YES	YES	NO	YES	YES	YES

Input Data

ROAD NAME: Seminole Pratt Whitney Rd STATION: 3420
 CURRENT YEAR: 2011 FROM: Midpoint
 ANALYSIS YEAR: 2017 TO: Okeechobee Blvd
 GROWTH RATE: -2.62% COUNT DATE: 1/5/2011
 PSF: 1

Report Created: 05/08/2013

Link Analysis

Time Period Direction	AM			PM		
	2-way	NB/EB	SB/WB	2-way	NB/EB	SB/WB
Existing Volume	1106	278	839	1180	689	521
Peak Volume	1106	278	839	1180	689	521
Diversion(%)	0	0	0	0	0	0
Volume after Diversion	1106	278	839	1180	689	521

Committed Developments							Type	% Complete
Lazy F Ranch	0	0	0	0	0	0	NR	0%
Bink's Corporate Center	7	0	0	25	0	0	NR	0%
Groves Town Center	30	0	23	102	59	43	NR	0%
Loxahatchee Groves Commons	34	0	19	95	48	47	NR	0%
Palm Beach State College	69	0	60	88	40	47	NR	0%
Total Committed Developments	140	0	102	310	147	137		
Total Committed Residential	0	0	0	0	0	0		
Total Committed Non-Residential	140	0	102	310	147	137		
Double Count Reduction	0	0	0	0	0	0		
Total Discounted Committed Developments	140	0	102	310	147	137		
Historical Growth	-163	-41	-124	-174	-101	-77		
Comm Dev+1% Growth	208	17	154	383	189	169		
Growth Volume Used	208	17	154	383	189	169		
Total Volume	1314	295	993	1563	878	690		

Lanes						
LOS D Capacity	1480	880	880	1480	880	880
Link Meets Test 1?	YES	YES	NO	NO	YES	YES
LOS E Capacity	1570	880	880	1570	880	880
Link Meets Test 2?	YES	YES	NO	YES	YES	YES

ROAD NAME: Southern Blvd
 CURRENT YEAR: 2012
 ANALYSIS YEAR: 2017
 GROWTH RATE: -5.91%

Input Data
 STATION: 3101
 FROM: County Road 880
 TO: Midpoint Site
 COUNT DATE: 1/23/2012
 PSF: 1

Report Created: 05/08/2013

Link Analysis

Time Period Direction	AM			PM		
	2-way	NB/EB	SB/WB	2-way	NB/EB	SB/WB
Existing Volume	1229	378	876	1209	823	386
Peak Volume	1229	378	876	1209	823	386
Diversion(%)	0	0	0	0	0	0
Volume after Diversion	1229	378	876	1209	823	386

Committed Developments							Type	% Complete
Lazy F Ranch	0	0	0	0	0	0	NR	0%
Groves Town Center	15	0	0	51	0	0	NR	0%
Loxahatchee Groves Commons	17	0	0	48	0	0	NR	0%
Palm Beach State College	41	36	0	53	0	0	NR	0%
Total Committed Developments	73	36	0	152	0	0		
Total Committed Residential	0	0	0	0	0	0		
Total Committed Non-Residential	73	36	0	152	0	0		
Double Count Reduction	0	0	0	0	0	0		
 Total Discounted Committed Developments	 73	 36	 0	 152	 0	 0		
 Historical Growth	 -323	 -99	 -230	 -318	 -216	 -101		
Comm Dev+1% Growth	136	55	45	214	42	20		
Growth Volume Used	136	55	45	214	42	20		
Total Volume	1365	433	921	1423	865	406		

Lanes	4LD					
LOS D Capacity	3220	3320	3320	3220	3320	3320
Link Meets Test 1?	YES	YES	YES	YES	YES	YES
LOS E Capacity	3400	3760	3760	3400	3760	3760
Link Meets Test 2?	YES	YES	YES	YES	YES	YES

Input Data

ROAD NAME: Southern Blvd STATION: 3443

CURRENT YEAR: 2012 FROM: Seminole Pratt Whitney Rd

ANALYSIS YEAR: 2017 TO: MIDPOINT

GROWTH RATE: -8.02% COUNT DATE: 2/27/2012

PSF: 1

Report Created: 05/08/2013

Link Analysis

Time Period Direction	AM			PM		
	2-way	NB/EB	SB/WB	2-way	NB/EB	SB/WB
Existing Volume	1968	1091	938	2050	1091	1007
Peak Volume	1968	1091	938	2050	1091	1007
Diversion(%)	0	0	0	0	0	0
Volume after Diversion	1968	1091	938	2050	1091	1007

Committed Developments							Type	% Complete
Lazy F Ranch	0	0	0	0	0	0	NR	0%
Loxahatchee Retail	2	0	0	26	0	0	NR	0%
Bink's Forest Residential	9	0	0	11	0	0	Res	0%
Bink's Corporate Center	7	0	0	25	0	0	NR	0%
Groves Town Center	45	35	0	153	65	89	NR	0%
Loxahatchee Groves Commons	51	28	23	143	70	73	NR	0%
Palm Beach State College	110	96	0	140	76	64	NR	0%
Total Committed Developments	224	159	23	498	211	226		
Total Committed Residential	9	0	0	11	0	0		
Total Committed Non-Residential	215	159	23	487	211	226		
Double Count Reduction	2	0	0	3	0	0		
Total Discounted Committed Developments	222	159	23	495	211	226		
Historical Growth	-672	-373	-320	-700	-373	-344		
Comm Dev+1% Growth	322	215	71	600	267	277		
Growth Volume Used	322	215	71	600	267	277		
Total Volume	2290	1306	1009	2650	1358	1284		

Lanes	4LD					
LOS D Capacity	3220	1960	1960	3220	1960	1960
Link Meets Test 1?	YES	YES	YES	YES	YES	YES
LOS E Capacity	3400	1960	1960	3400	1960	1960
Link Meets Test 2?	YES	YES	YES	YES	YES	YES

Input Data

ROAD NAME: Southern Blvd STATION: 3443
CURRENT YEAR: 2012 FROM: Midpoint
ANALYSIS YEAR: 2017 TO: Binks Forest Dr
GROWTH RATE: -8.02% COUNT DATE: 2/27/2012
PSF: 1

Report Created: 05/08/2013

Link Analysis

Time Period Direction	AM			PM		
	2-way	NB/EB	SB/WB	2-way	NB/EB	SB/WB
Existing Volume	1968	1091	938	2050	1091	1007
Peak Volume	1968	1091	938	2050	1091	1007
Diversion(%)	0	0	0	0	0	0
Volume after Diversion	1968	1091	938	2050	1091	1007

Committed Developments							Type	% Complete
Lazy F Ranch	0	0	0	0	0	0	NR	0%
Loxahatchee Retail	2	0	0	26	0	0	NR	0%
Bink's Forest Residential	9	0	0	11	0	0	Res	0%
Bink's Corporate Center	7	0	0	25	0	0	NR	0%
Groves Town Center	45	35	0	153	65	89	NR	0%
Loxahatchee Groves Commons	54	24	30	152	77	75	NR	0%
Palm Beach State College	96	0	84	123	56	66	NR	0%
Total Committed Developments	213	59	114	490	198	230		
Total Committed Residential	9	0	0	11	0	0		
Total Committed Non-Residential	204	59	114	479	198	230		
Double Count Reduction	2	0	0	3	0	0		
Total Discounted Committed Developments	211	59	114	487	198	230		
Historical Growth	-672	-373	-320	-700	-373	-344		
Comm Dev+1% Growth	311	115	162	592	254	281		
Growth Volume Used	311	115	162	592	254	281		
Total Volume	2279	1206	1100	2642	1345	1288		

Lanes	4LD					
LOS D Capacity	3220	1960	1960	3220	1960	1960
Link Meets Test 1?	YES	YES	YES	YES	YES	YES
LOS E Capacity	3400	1960	1960	3400	1960	1960
Link Meets Test 2?	YES	YES	YES	YES	YES	YES

Input Data

ROAD NAME: Southern Blvd STATION: 3431
 CURRENT YEAR: 2012 FROM: Binks Forest Dr
 ANALYSIS YEAR: 2017 TO: Midpoint
 GROWTH RATE: 1.68% COUNT DATE: 2/27/2012
 PSF: 1

Report Created: 05/08/2013

Link Analysis

Time Period Direction	AM			PM		
	2-way	NB/EB	SB/WB	2-way	NB/EB	SB/WB
Existing Volume	2928	1544	1564	2954	1553	1463
Peak Volume	2928	1544	1564	2954	1553	1463
Diversion(%)	0	0	0	0	0	0
Volume after Diversion	2928	1544	1564	2954	1553	1463

Committed Developments							Type	% Complete
Palms West Medical	5	4	1	6	2	5	NR	92%
Grove Medical	16	0	0	23	0	0	NR	0%
Palms West Hospital	4	3	1	4	2	3	NR	95%
Lazy F Ranch	0	0	0	0	0	0	NR	0%
Cypress Key	14	0	0	33	0	0	NR	0%
Southern Palm Crossing	0	0	0	0	0	0	NR	100%
Everglades Farm Equipment	14	10	5	27	13	14	NR	50%
Southern Crossing MUPD	13	0	0	31	0	20	NR	0%
Loxahatchee Retail	2	0	0	35	0	0	NR	0%
Bink's Forest Residential	24	20	0	28	0	0	Res	0%
Bink's Corporate Center	22	0	0	75	39	36	NR	0%
Groves Town Center	37	29	0	128	54	74	NR	0%
Loxahatchee Groves Commons	57	26	32	162	82	80	NR	0%
Palm Beach State College	138	0	120	175	81	95	NR	0%
Total Committed Developments	346	92	159	727	273	327		
Total Committed Residential	24	20	0	28	0	0		
Total Committed Non-Residential	322	72	159	699	273	327		
Double Count Reduction	6	5	0	7	0	0		
Total Discounted Committed Developments	340	87	159	720	273	327		
Historical Growth	254	134	136	256	135	127		
Comm Dev+1% Growth	489	166	239	871	352	402		
Growth Volume Used	489	166	239	871	352	402		
Total Volume	3417	1710	1803	3825	1905	1865		

Lanes	4LD					
LOS D Capacity	3220	1960	1960	3220	1960	1960
Link Meets Test 1?	NO	YES	YES	NO	YES	YES
LOS E Capacity	3400	1960	1960	3400	1960	1960
Link Meets Test 2?	NO	YES	YES	NO	YES	YES

Input Data

ROAD NAME: Southern Blvd STATION: 3431
 CURRENT YEAR: 2012 FROM: MIDPOINT
 ANALYSIS YEAR: 2017 TO: Big Blue Trce
 GROWTH RATE: 1.68% COUNT DATE: 2/27/2012
 PSF: 1

Report Created: 05/08/2013

Link Analysis

Time Period Direction	AM			PM		
	2-way	NB/EB	SB/WB	2-way	NB/EB	SB/WB
Existing Volume	2928	1544	1564	2954	1553	1463
Peak Volume	2928	1544	1564	2954	1553	1463
Diversion(%)	0	0	0	0	0	0
Volume after Diversion	2928	1544	1564	2954	1553	1463

Committed Developments							Type	% Complete
Palms West Medical	5	4	1	6	2	5	NR	92%
Grove Medical	16	0	0	23	0	0	NR	0%
Palms West Hospital	4	3	1	4	2	3	NR	95%
Lazy F Ranch	0	0	0	0	0	0	NR	0%
Cypress Key	14	0	0	33	0	0	NR	0%
Southern Palm Crossing	0	0	0	0	0	0	NR	100%
Everglades Farm Equipment	14	10	5	27	13	14	NR	50%
Southern Crossing MUPD	54	0	42	122	78	44	NR	0%
Loxahatchee Retail	4	0	0	52	27	25	NR	0%
Bink's Forest Residential	24	20	0	28	0	0	Res	0%
Bink's Corporate Center	22	0	0	75	39	36	NR	0%
Groves Town Center	51	0	39	173	100	73	NR	0%
Loxahatchee Groves Commons	57	26	32	162	82	80	NR	0%
Palm Beach State College	138	0	120	175	81	95	NR	0%
Total Committed Developments	403	63	240	880	424	375		
Total Committed Residential	24	20	0	28	0	0		
Total Committed Non-Residential	379	43	240	852	424	375		
Double Count Reduction	6	5	0	7	0	0		
Total Discounted Committed Developments	397	58	240	873	424	375		
Historical Growth	254	134	136	256	135	127		
Comm Dev+1% Growth	546	137	320	1024	503	450		
Growth Volume Used	546	137	320	1024	503	450		
Total Volume	3474	1681	1884	3978	2056	1913		

Lanes	4LD					
LOS D Capacity	3220	1960	1960	3220	1960	1960
Link Meets Test 1?	NO	YES	YES	NO	NO	YES
LOS E Capacity	3400	1960	1960	3400	1960	1960
Link Meets Test 2?	NO	YES	YES	NO	NO	YES

Input Data

ROAD NAME: Southern Blvd STATION: 0 Report Created: 05/08/2013
 CURRENT YEAR: 2012 FROM: Big Blue Trce
 ANALYSIS YEAR: 2017 TO: Midpoint - Palms West
 GROWTH RATE: 0% COUNT DATE: NA
 PSF: 0

Link Analysis

Time Period Direction	AM			PM		
	2-way	NB/EB	SB/WB	2-way	NB/EB	SB/WB
Existing Volume	0	0	0	0	0	0
Peak Volume	0	0	0	0	0	0
Diversion(%)	0	0	0	0	0	0
Volume after Diversion	0	0	0	0	0	0

Committed Developments							Type	% Complete
Palms West Medical	9	7	2	11	3	8	NR	92%
Grove Medical	12	0	0	17	0	0	NR	0%
Palms West Hospital	7	4	2	7	3	5	NR	95%
Lazy F Ranch	0	0	0	0	0	0	NR	0%
Western Plaza	1	1	0	2	1	1	NR	89%
Cypress Key	44	28	0	103	46	58	NR	0%
Southern Palm Crossing	0	0	0	0	0	0	NR	100%
Everglades Farm Equipment	15	10	5	29	14	15	NR	50%
Wellington Mall	1	1	1	5	2	2	NR	90%
Southern Crossing MUPD	40	0	32	92	59	33	NR	0%
Loxahatchee Retail	3	0	0	39	20	19	NR	0%
Southern Center	1	1	1	7	3	4	NR	90%
Groves Town Center	33	0	25	112	65	47	NR	0%
Loxahatchee Groves Commons	37	0	20	105	53	51	NR	0%
Palm Beach State College	124	0	108	158	72	85	NR	0%
Total Committed Developments	327	52	196	687	341	328		
Total Committed Residential	0	0	0	0	0	0		
Total Committed Non-Residential	327	52	196	687	341	328		
Double Count Reduction	0	0	0	0	0	0		
Total Discounted Committed Developments	327	52	196	687	341	328		
Historical Growth	0	0	0	0	0	0		
Comm Dev+1% Growth	327	52	196	687	341	328		
Growth Volume Used	327	52	196	687	341	328		
Total Volume	327	52	196	687	341	328		

Lanes	4LD					
LOS D Capacity	3220	1770	1770	3220	1770	1770
Link Meets Test 1?	YES	YES	YES	YES	YES	YES
LOS E Capacity	3400	1870	1870	3400	1870	1870
Link Meets Test 2?	YES	YES	YES	YES	YES	YES

Input Data

ROAD NAME: Southern Blvd STATION: 3413 Report Created: 05/08/2013
 CURRENT YEAR: 2012 FROM: MIDPOINT Palms West +
 ANALYSIS YEAR: 2017 TO: Crestwood Blvd
 GROWTH RATE: -0.62% COUNT DATE: 2/26/2012
 PSF: 1

Link Analysis

Time Period Direction	AM			PM		
	2-way	NB/EB	SB/WB	2-way	NB/EB	SB/WB
Existing Volume	3478	1913	1565	3465	1670	1845
Peak Volume	3478	1913	1565	3465	1670	1845
Diversion(%)	0	0	0	0	0	0
Volume after Diversion	3478	1913	1565	3465	1670	1845

Committed Developments							Type	% Complete
Target Center	0	0	0	0	0	0	NR	100%
Palms West Medical	16	3	12	18	13	5	NR	92%
Grove Medical	12	0	0	17	0	0	NR	0%
Palms West Hospital	12	4	8	12	8	5	NR	95%
Lazy F Ranch	0	0	0	0	0	0	NR	0%
Western Plaza	1	1	0	2	1	1	NR	89%
Cypress Key	44	28	0	103	46	58	NR	0%
Southern Palm Crossing	0	0	0	0	0	0	NR	100%
Everglades Farm Equipment	9	3	6	17	9	8	NR	50%
Wellington Mall	1	1	1	5	2	2	NR	90%
Southern Crossing MUPD	40	0	32	92	59	33	NR	0%
Loxahatchee Retail	3	0	0	39	0	0	NR	0%
Southern Center	1	1	1	7	3	4	NR	90%
Groves Town Center	33	0	0	112	65	47	NR	0%
Loxahatchee Groves Commons	37	0	0	105	53	51	NR	0%
Palm Beach State College	124	0	108	158	72	85	NR	0%
Total Committed Developments	333	41	168	687	331	299		
Total Committed Residential	0	0	0	0	0	0		
Total Committed Non-Residential	333	41	168	687	331	299		
Double Count Reduction	0	0	0	0	0	0		
Total Discounted Committed Developments	333	41	168	687	331	299		
Historical Growth	-106	-58	-48	-106	-51	-56		
Comm Dev+1% Growth	510	139	248	864	416	393		
Growth Volume Used	510	139	248	864	416	393		
Total Volume	3988	2052	1813	4329	2086	2238		

Lanes	6LD					
LOS D Capacity	4880	2680	2680	4880	2680	2680
Link Meets Test 1?	YES	YES	YES	YES	YES	YES
LOS E Capacity	5150	2830	2830	5150	2830	2830
Link Meets Test 2?	YES	YES	YES	YES	YES	YES

Input Data

ROAD NAME: Southern Blvd STATION: 3417 Report Created: 05/08/2013
 CURRENT YEAR: 2012 FROM: Crestwood Blvd
 ANALYSIS YEAR: 2017 TO: MIDPOINT (Cypress Hwy)
 GROWTH RATE: 0.98% COUNT DATE: 2/27/2012
 PSF: 1

Link Analysis

Time Period Direction	AM			PM		
	2-way	NB/EB	SB/WB	2-way	NB/EB	SB/WB
Existing Volume	4298	2863	1486	4407	1892	2699
Peak Volume	4298	2863	1486	4407	1892	2699
Diversion(%)	0	0	0	0	0	0
Volume after Diversion	4298	2863	1486	4407	1892	2699

Committed Developments							Type	% Complete
Target Center	0	0	0	0	0	0	NR	100%
Palms West Medical	7	2	6	8	6	2	NR	92%
Groves at Royal Palm	0	0	0	0	0	0	NR	100%
Grove Medical	5	0	0	7	0	0	NR	0%
Martingale Meadows	10	0	0	15	0	0	Res	0%
Palms West Hospital	5	2	4	6	4	2	NR	95%
Lazy F Ranch	0	0	0	0	0	0	NR	0%
Rubin Commercial	40	0	0	134	65	69	NR	0%
Western Plaza	8	4	4	15	7	8	NR	89%
Isla Verde	1	1	1	4	2	2	NR	68%
Cypress Key	134	85	49	315	139	176	NR	0%
Southern Palm Crossing	0	0	0	0	0	0	NR	100%
Olympia	5	1	4	5	3	2	Res	90%
Tract 115-Village Center	0	0	0	0	0	0	NR	0%
Everglades Farm Equipment	6	2	4	12	6	6	NR	50%
Wellington Mall	1	0	0	2	1	1	NR	90%
Southern Crossing MUPD	23	0	0	52	33	0	NR	0%
Southern Center	5	3	2	25	12	13	NR	90%
Pioneer Road Commercial / Residential	13	0	0	43	0	0	NR	0%
Seven Eleven	34	0	0	35	0	0	NR	0%
Groves Town Center	10	0	0	36	0	0	NR	0%
Loxahatchee Groves Commons	12	0	0	33	0	0	NR	0%
Palm Beach State College	41	0	36	53	0	0	NR	0%
Total Committed Developments	360	100	110	800	278	281		
Total Committed Residential	15	1	4	20	3	2		
Total Committed Non-Residential	345	99	106	780	275	279		
Double Count Reduction	4	0	1	5	1	1		
Total Discounted Committed Developments	356	100	109	795	277	280		
Historical Growth	214	142	74	219	94	134		
Comm Dev+1% Growth	575	246	185	1020	374	418		
Growth Volume Used	575	246	185	1020	374	418		
Total Volume	4873	3109	1671	5427	2266	3117		

Lanes	6LD					
LOS D Capacity	4880	2940	2940	4880	2940	2940
Link Meets Test 1?	YES	NO	YES	NO	YES	NO
LOS E Capacity	5150	2940	2940	5150	2940	2940
Link Meets Test 2?	YES	NO	YES	NO	YES	NO

Input Data

ROAD NAME: Southern Blvd STATION: 3437 Report Created: 05/08/2013
 CURRENT YEAR: 2012 FROM: Midpoint *Cypress Head*
 ANALYSIS YEAR: 2017 TO: Royal Palm Beach Blvd
 GROWTH RATE: 1.06% COUNT DATE: 2/27/2012
 PSF: 1

Link Analysis

Time Period Direction	AM			PM		
	2-way	NB/EB	SB/WB	2-way	NB/EB	SB/WB
Existing Volume	4191	2776	1467	4425	1862	2667
Peak Volume	4191	2776	1467	4425	1862	2667
Diversion(%)	0	0	0	0	0	0
Volume after Diversion	4191	2776	1467	4425	1862	2667

Committed Developments							Type	% Complete
Target Center	0	0	0	0	0	0	NR	100%
Palms West Medical	7	2	6	8	6	2	NR	92%
Groves at Royal Palm	0	0	0	0	0	0	NR	100%
Grove Medical	5	0	0	7	0	0	NR	0%
Martingale Meadows	10	0	0	15	0	0	Res	0%
Palms West Hospital	5	2	4	6	4	2	NR	95%
Lazy F Ranch	0	0	0	0	0	0	NR	0%
Rubin Commercial	40	0	0	134	65	69	NR	0%
Western Plaza	8	4	4	15	7	8	NR	89%
Isla Verde	1	1	1	4	2	2	NR	68%
Cypress Key	66	0	42	155	87	68	NR	0%
Southern Palm Crossing	0	0	0	0	0	0	NR	100%
Olympia	5	1	4	5	3	2	Res	90%
Tract 115-Village Center	0	0	0	0	0	0	NR	0%
Everglades Farm Equipment	6	2	4	12	6	6	NR	50%
Wellington Mall	1	0	0	2	1	1	NR	90%
Southern Crossing MUPD	23	0	0	52	33	0	NR	0%
Southern Center	5	3	2	25	12	13	NR	90%
Pioneer Road Commercial / Residential	13	0	0	43	0	0	NR	0%
Seven Eleven	34	0	0	35	0	0	NR	0%
Groves Town Center	10	0	0	36	0	0	NR	0%
Loxahatchee Groves Commons	12	0	0	33	0	0	NR	0%
Palm Beach State College	41	0	36	53	0	0	NR	0%
Total Committed Developments	292	15	103	640	226	173		
Total Committed Residential	15	1	4	20	3	2		
Total Committed Non-Residential	277	14	99	620	223	171		
Double Count Reduction	4	0	1	5	1	1		

Total Discounted Committed Developments 288 15 102 635 225 172

Historical Growth	228	151	80	240	101	145
Comm Dev+1% Growth	502	157	177	861	320	308
Growth Volume Used	502	157	177	861	320	308
Total Volume	4693	2933	1644	5286	2182	2975

Lanes	6LD					
LOS D Capacity	4880	2940	2940	4880	2940	2940
Link Meets Test 1?	YES	YES	YES	NO	YES	NO
LOS E Capacity	5150	2940	2940	5150	2940	2940
Link Meets Test 2?	YES	YES	YES	NO	YES	NO

Input Data

ROAD NAME: Southern Blvd STATION: 3405 Report Created: 05/08/2013
CURRENT YEAR: 2012 FROM: Royal Palm Beach Blvd
ANALYSIS YEAR: 2017 TO: MIDPOINT
GROWTH RATE: 0% COUNT DATE: NA
PSF: 0

Link Analysis

Time Period Direction	AM			PM		
	2-way	NB/EB	SB/WB	2-way	NB/EB	SB/WB
Existing Volume	0	0	0	0	0	0
Peak Volume	0	0	0	0	0	0
Diversion(%)	0	0	0	0	0	0
Volume after Diversion	0	0	0	0	0	0

Committed Developments							Type	% Complete
Target Center	0	0	0	0	0	0	NR	100%
Palms West Medical	5	1	4	6	4	2	NR	92%
Groves at Royal Palm	0	0	0	0	0	0	NR	100%
Martingale Meadows	15	0	0	22	0	0	Res	0%
Palms West Hospital	4	1	3	4	3	2	NR	95%
Lazy F Ranch	0	0	0	0	0	0	NR	0%
Rubin Commercial	66	0	0	221	107	114	NR	0%
Western Plaza	11	6	5	20	10	10	NR	89%
Isla Verde	14	7	6	45	21	23	NR	68%
Cypress Key	54	0	0	127	71	56	NR	0%
Southern Palm Crossing	0	0	0	0	0	0	NR	100%
Ching SR 7	0	0	0	0	0	0	NR	100%
Olympia	8	2	6	8	5	3	Res	90%
United Auto Group	0	0	0	0	0	0	NR	100%
Village Professional Park	26	0	0	40	0	0	NR	0%
Royal Palm Retail	0	0	0	0	0	0	NR	100%
Tract 115-Village Center	0	0	0	0	0	0	NR	0%
Wellington Mall	3	2	1	12	6	6	NR	90%
Shoppes At Southern Pines	3	2	1	12	6	6	NR	72%
Wellington Regional Medical Center	40	28	12	47	15	31	NR	54%
Pioneer Trail	3	0	0	5	0	0	Res	40%
Cypress Point MUPD	14	0	0	18	0	0	NR	0%
Southern Center	9	5	3	40	19	21	NR	90%
Aldi / Royal Palm Industrial	30	0	0	13	0	0	NR	5%
Pioneer Road Commercial / Residential	19	0	0	63	0	0	NR	0%
Village Green	14	0	0	27	0	0	NR	0%
Enclave at Royal Palm Beach	8	0	0	11	0	0	Res	0%
Seven Eleven	51	0	0	51	0	0	NR	0%
Palm Beach Auto Auction	13	0	0	22	0	0	NR	50%
03-W Marginal Elementary	0	0	0	0	0	0	NR	100%
PBC Stockade	12	0	0	13	0	0	NR	36%
Total Committed Developments	422	54	41	827	267	274		
Total Committed Residential	34	2	6	46	5	3		
Total Committed Non-Residential	388	52	35	781	262	271		
Double Count Reduction	9	1	2	12	1	1		
Total Discounted Committed Developments	413	53	39	815	266	273		
Historical Growth	0	0	0	0	0	0		
Comm Dev+1% Growth	413	53	39	815	266	273		
Growth Volume Used	413	53	39	815	266	273		
Total Volume	413	53	39	815	266	273		

Lanes	8LD					
LOS D Capacity	6530	3940	3940	6530	3940	3940
Link Meets Test 1?	YES	YES	YES	YES	YES	YES
LOS E Capacity	6880	3940	3940	6880	3940	3940
Link Meets Test 2?	YES	YES	YES	YES	YES	YES

Input Data

ROAD NAME: Southern Blvd	STATION: 3409	Report Created: 05/08/2013
CURRENT YEAR: 2012	FROM: Midpoint	
ANALYSIS YEAR: 2017	TO: S State Road 7	
GROWTH RATE: -1.77%	COUNT DATE: 2/22/2012	
	PSF: 1	

Link Analysis

Time Period Direction	AM			PM		
	2-way	NB/EB	SB/WB	2-way	NB/EB	SB/WB
Existing Volume	4452	3178	1570	4805	2297	2705
Peak Volume	4452	3178	1570	4805	2297	2705
Diversion(%)	0	0	0	0	0	0
Volume after Diversion	4452	3178	1570	4805	2297	2705

Committed Developments							Type	% Complete
Target Center	0	0	0	0	0	0	NR	100%
Palms West Medical	5	1	4	6	4	2	NR	92%
Groves at Royal Palm	0	0	0	0	0	0	NR	100%
Martingale Meadows	45	0	0	65	0	41	Res	0%
Palms West Hospital	4	1	3	4	3	2	NR	95%
Lazy F Ranch	0	0	0	0	0	0	NR	0%
Rubin Commercial	107	48	60	361	186	175	NR	0%
Western Plaza	11	6	5	20	10	10	NR	89%
Isla Verde	14	7	6	45	21	23	NR	68%
Cypress Key	54	0	0	127	71	56	NR	0%
Southern Palm Crossing	0	0	0	0	0	0	NR	100%
Ching SR 7	0	0	0	0	0	0	NR	100%
Olympia	8	2	6	8	5	3	Res	90%
United Auto Group	0	0	0	0	0	0	NR	100%
Village Professional Park	26	0	0	40	0	0	NR	0%
Royal Palm Retail	0	0	0	0	0	0	NR	100%
Tract 115-Village Center	0	0	0	0	0	0	NR	0%
Wellington Mall	3	2	1	12	6	6	NR	90%
Shoppes At Southern Pines	3	2	1	12	6	6	NR	72%
Wellington Regional Medical Center	40	28	12	47	15	31	NR	54%
Pioneer Trail	3	0	0	5	0	0	Res	40%
Cypress Point MUPD	14	0	0	18	0	0	NR	0%
Southern Center	4	1	2	17	9	8	NR	90%
Aldi / Royal Palm Industrial	30	0	0	13	0	0	NR	5%
Pioneer Road Commercial / Residential	19	0	0	63	0	0	NR	0%
Village Green	14	0	0	27	0	0	NR	0%
Enclave at Royal Palm Beach	8	0	0	11	0	0	Res	0%
Seven Eleven	51	0	0	51	0	0	NR	0%
Palm Beach Auto Auction	13	0	0	22	0	0	NR	50%
03-W Marginal Elementary	0	0	0	0	0	0	NR	100%
PBC Stockade	12	0	0	13	0	0	NR	36%
Total Committed Developments	488	98	100	987	336	363		
Total Committed Residential	64	2	6	89	5	44		
Total Committed Non-Residential	424	96	94	898	331	319		
Double Count Reduction	16	1	2	22	1	11		
Total Discounted Committed Developments	472	97	98	965	335	352		
Historical Growth	-381	-272	-134	-411	-196	-231		
Comm Dev+1% Growth	699	259	178	1210	452	490		
Growth Volume Used	699	259	178	1210	452	490		
Total Volume	5151	3437	1748	6015	2749	3195		

Lanes	8LD					
LOS D Capacity	6530	3940	3940	6530	3940	3940
Link Meets Test 1?	YES	YES	YES	YES	YES	YES
LOS E Capacity	6880	3940	3940	6880	3940	3940
Link Meets Test 2?	YES	YES	YES	YES	YES	YES

Input Data

ROAD NAME: Southern Blvd STATION: 3415 Report Created: 05/08/2013
 CURRENT YEAR: 2012 FROM: N State Road 7
 ANALYSIS YEAR: 2017 TO: Midpoint
 GROWTH RATE: 5.11% COUNT DATE: 2/22/2012
 PSF: 1

Link Analysis

Time Period	AM			PM		
	2-way	NB/EB	SB/WB	2-way	NB/EB	SB/WB
Direction						
Existing Volume	5130	3344	1830	4897	2083	2936
Peak Volume	5130	3344	1830	4897	2083	2936
Diversion(%)	0	0	0	0	0	0
Volume after Diversion	5130	3344	1830	4897	2083	2936

Committed Developments							Type	% Complete
Target Center	0	0	0	0	0	0	NR	100%
Palms West Medical	1	0	1	2	1	0	NR	92%
Groves at Royal Palm	0	0	0	0	0	0	NR	100%
Kings Academy	12	8	4	4	2	2	NR	70%
Martingale Meadows	24	0	0	34	0	0	Res	0%
Palms West Hospital	1	0	1	1	1	0	NR	95%
Lazy F Ranch	0	0	0	0	0	0	NR	0%
ProLogis Pike Road	41	0	0	37	0	0	NR	0%
Rubin Commercial	26	0	0	87	45	42	NR	0%
Western Plaza	11	6	5	20	10	10	NR	89%
Belvedere Commerce Center	11	0	0	27	0	0	NR	0%
Isla Verde	9	4	5	30	15	14	NR	68%
Southern Palm Crossing	0	0	0	0	0	0	NR	100%
Ching SR 7	0	0	0	0	0	0	NR	100%
Olympia	6	5	2	6	2	4	Res	90%
United Auto Group	0	0	0	0	0	0	NR	100%
Village Professional Park	19	0	0	29	0	0	NR	0%
Royal Palm Retail	0	0	0	0	0	0	NR	100%
Fox DRI	2	1	1	5	2	2	NR	94%
Wellington Mall	3	1	2	12	6	6	NR	90%
Shoppes At Southern Pines	8	5	3	37	18	19	NR	72%
Wellington Regional Medical Center	40	12	28	47	31	15	NR	54%
Pioneer Trail	9	0	0	12	0	0	Res	40%
Cypress Point MUPD	43	0	0	53	0	40	NR	0%
Southern Center	3	1	2	15	8	7	NR	90%
Wellington View	13	6	7	9	5	4	Res	65%
Aldi / Royal Palm Industrial	30	0	0	13	0	0	NR	5%
Pioneer Road Commercial / Residential	21	0	0	68	0	0	NR	0%
Village Green	14	0	0	27	0	0	NR	0%
Enclave at Royal Palm Beach	23	0	0	28	0	0	Res	0%
Seven Eleven	49	0	0	50	0	0	NR	0%
Palm Beach Auto Auction	42	38	4	70	37	34	NR	50%
03-W Marginal Elementary	0	0	0	0	0	0	NR	100%
PBC Stockade	50	47	0	53	0	44	NR	36%
Total Committed Developments	511	134	65	776	183	243		
Total Committed Residential	75	11	9	89	7	8		
Total Committed Non-Residential	436	123	56	687	176	235		
Double Count Reduction	19	3	2	22	2	2		
Total Discounted Committed Developments	492	131	63	754	181	241		
Historical Growth	1450	945	517	1384	589	830		
Comm Dev+1% Growth	754	302	156	1004	287	391		
Growth Volume Used	1450	945	517	1384	589	830		
Total Volume	6580	4289	2347	6281	2672	3766		

Lanes	8LD					
LOS D Capacity	6530	3940	3940	6530	3940	3940
Link Meets Test 1?	NO	NO	YES	YES	YES	YES
LOS E Capacity	6880	3940	3940	6880	3940	3940
Link Meets Test 2?	YES	NO	YES	YES	YES	YES

Input Data

ROAD NAME: Southern Blvd STATION: 3415 Report Created: 05/08/2013
CURRENT YEAR: 2012 FROM: Midpoint
ANALYSIS YEAR: 2017 TO: Sansburys Way
GROWTH RATE: 5.11% COUNT DATE: 2/22/2012
PSF: 1

Link Analysis

Time Period	AM			PM		
	2-way	NB/EB	SB/WB	2-way	NB/EB	SB/WB
Direction						
Existing Volume	5130	3344	1830	4897	2083	2936
Peak Volume	5130	3344	1830	4897	2083	2936
Diversion(%)	0	0	0	0	0	0
Volume after Diversion	5130	3344	1830	4897	2083	2936

Committed Developments						Type	% Complete
Target Center	0	0	0	0	0	NR	100%
Palms West Medical	1	0	1	2	1	NR	92%
Groves at Royal Palm	0	0	0	0	0	NR	100%
Kings Academy	12	8	4	4	2	NR	70%
Martingale Meadows	24	0	0	34	0	Res	0%
Palms West Hospital	1	0	1	1	1	NR	95%
Lazy F Ranch	0	0	0	0	0	NR	0%
ProLogis Pike Road	41	0	0	37	0	NR	0%
Rubin Commercial	26	0	0	87	45	NR	0%
Western Plaza	8	4	4	15	8	NR	89%
Belvedere Commerce Center	11	0	0	27	0	NR	0%
Isla Verde	9	4	5	30	15	NR	68%
Southern Palm Crossing	0	0	0	0	0	NR	100%
Ching SR 7	0	0	0	0	0	NR	100%
Olympia	6	5	2	6	2	Res	90%
United Auto Group	0	0	0	0	0	NR	100%
Village Professional Park	19	0	0	29	0	NR	0%
Royal Palm Retail	0	0	0	0	0	NR	100%
Fox DRI	2	1	1	5	2	NR	94%
Wellington Mall	3	1	2	12	6	NR	90%
Shoppes At Southern Pines	8	5	3	37	18	NR	72%
Wellington Regional Medical Center	40	12	28	47	31	NR	54%
Pioneer Trail	9	0	0	12	0	Res	40%
Cypress Point MUPD	43	0	0	53	0	NR	0%
Southern Center	3	1	2	15	8	NR	90%
Wellington View	13	6	7	9	5	Res	65%
Aldi / Royal Palm Industrial	30	0	0	13	0	NR	5%
Pioneer Road Commercial / Residential	21	0	0	68	0	NR	0%
Village Green	14	0	0	27	0	NR	0%
Enclave at Royal Palm Beach	23	0	0	28	0	Res	0%
Seven Eleven	49	0	0	50	0	NR	0%
Palm Beach Auto Auction	42	38	4	70	37	NR	50%
03-W Marginal Elementary	0	0	0	0	0	NR	100%
PBC Stockade	100	0	93	106	89	NR	36%
Total Committed Developments	558	85	157	824	270		
Total Committed Residential	75	11	9	89	7		
Total Committed Non-Residential	483	74	148	735	263		
Double Count Reduction	19	3	2	22	2		
Total Discounted Committed Developments	539	82	155	802	268		
Historical Growth	1450	945	517	1384	589		
Comm Dev+1% Growth	801	253	248	1052	374		
Growth Volume Used	1450	945	517	1384	589		
Total Volume	6580	4289	2347	6281	2672		

Lanes	8LD					
LOS D Capacity	6530	3940	3940	6530	3940	3940
Link Meets Test 1?	NO	NO	YES	YES	YES	YES
LOS E Capacity	6880	3940	3940	6880	3940	3940
Link Meets Test 2?	YES	NO	YES	YES	YES	YES

**COMMITTED DEVELOPMENT
INTERSECTIONS**

Input Data

E-W Street: State Road 80 COUNT DATE: NA
 N-S STREET: County Road 880 CURRENT YEAR: NA
 TIME PERIOD: AM ANALYSIS YEAR: 2021
 GROWTH RATE: 0% PSF: 0
 SIGNAL ID: 30690

Intersection Volume Development

	Eastbound			Westbound			Northbound			Southbound			Type	% Complete
	Left	Thru	Right	Left	Thru	Right	Left	Thru	Right	Left	Thru	Right		
Diversions	0%	0%	0%	0%	0%	0%	0%	0%	0%	0%	0%	0%		
Peak Season Volume	0	0	0	0	0	0	0	0	0	0	0	0		
Committed Developments														
No projects found	0	0	0	0	0	0	0	0	0	0	0	0	NA	0%
Total Committed Developments	0	0	0	0	0	0	0	0	0	0	0	0		
Total Committed Residential	0	0	0	0	0	0	0	0	0	0	0	0		
Total Committed Non-Residential	0	0	0	0	0	0	0	0	0	0	0	0		
Double Count Reduction	0	0	0	0	0	0	0	0	0	0	0	0		
Total Discounted Committed	0	0	0	0	0	0	0	0	0	0	0	0		
Historical Growth	0	0	0	0	0	0	0	0	0	0	0	0		
Comm Dev+1% Growth	0	0	0	0	0	0	0	0	0	0	0	0		
Growth Volume Used	0	0	0	0	0	0	0	0	0	0	0	0		
Total Volume	0	0	0	0	0	0	0	0	0	0	0	0		

Input Data

E-W Street: State Road 80 COUNT DATE: NA
 N-S STREET: County Road 880 CURRENT YEAR: NA
 TIME PERIOD: PM ANALYSIS YEAR: 2021
 GROWTH RATE: 0% PSF: 0
 SIGNAL ID: 30690

Intersection Volume Development

	Eastbound			Westbound			Northbound			Southbound			Type	% Complete
	Left	Thru	Right	Left	Thru	Right	Left	Thru	Right	Left	Thru	Right		
Diversions	0%	0%	0%	0%	0%	0%	0%	0%	0%	0%	0%	0%		
Peak Season Volume	0	0	0	0	0	0	0	0	0	0	0	0		
Committed Developments														
No projects found	0	0	0	0	0	0	0	0	0	0	0	0	NA	0%
Total Committed Developments	0	0	0	0	0	0	0	0	0	0	0	0		
Total Committed Residential	0	0	0	0	0	0	0	0	0	0	0	0		
Total Committed Non-Residential	0	0	0	0	0	0	0	0	0	0	0	0		
Double Count Reduction	0	0	0	0	0	0	0	0	0	0	0	0		
Total Discounted Committed	0	0	0	0	0	0	0	0	0	0	0	0		
Historical Growth	0	0	0	0	0	0	0	0	0	0	0	0		
Comm Dev+1% Growth	0	0	0	0	0	0	0	0	0	0	0	0		
Growth Volume Used	0	0	0	0	0	0	0	0	0	0	0	0		
Total Volume	0	0	0	0	0	0	0	0	0	0	0	0		

E-W Street: Southern Blvd
 N-S STREET: Seminole Pratt Whitney Rd
 TIME PERIOD: AM
 GROWTH RATE: -7.65%
 SIGNAL ID: 30710

Input Data
 COUNT DATE: 3/5/2012
 CURRENT YEAR: 2012
 ANALYSIS YEAR: 2021
 PSF: 1

Report Created: 05/03/2013

	Intersection Volume Development												Type	% Complete
	Eastbound			Westbound			Northbound			Southbound				
	Left	Thru	Right	Left	Thru	Right	Left	Thru	Right	Left	Thru	Right		
Existing Volume	53	380	0	3	663	198	0	0	0	649	0	138		
Diversions	0%	0%	0%	0%	0%	0%	0%	0%	0%	0%	0%	0%		
Peak Season Volume	53	380	0	3	663	198	0	0	0	649	0	138		
Committed Developments														
Groves Town Center *	0	11	0	0	4	8	0	0	0	22	0	0	NR	0%
Palm Beach State College *	0	36	0	0	5	9	0	0	0	60	0	0	NR	0%
Bink's Corporate Center	0	0	0	0	0	3	0	0	0	4	0	0	NR	0%
Loxahatchee Groves Commons *	0	9	0	0	8	15	0	0	0	18	0	0	NR	0%
Lazy F Ranch	0	0	0	0	0	0	0	0	0	0	0	0	NR	0%
Total Committed Developments	0	56	0	0	17	35	0	0	0	104	0	0		
Total Committed Residential	0	0	0	0	0	0	0	0	0	0	0	0		
Total Committed Non-Residential	0	56	0	0	17	35	0	0	0	104	0	0		
Double Count Reduction	0	0	0	0	0	0	0	0	0	0	0	0		
Total Discounted Committed	0	56	0	0	17	35	0	0	0	104	0	0		
Historical Growth	-27	-194	0	-2	-339	-101	0	0	0	-332	0	-71		
Comm Dev+1% Growth	5	92	0	0	79	54	0	0	0	165	0	13		
Growth Volume Used	5	92	0	0	79	54	0	0	0	165	0	13		
Total Volume	58	472	0	3	742	252	0	0	0	814	0	151		

E-W Street: Southern Blvd
 N-S STREET: Seminole Pratt Whitney Rd
 TIME PERIOD: PM
 GROWTH RATE: -7.65%
 SIGNAL ID: 30710

Input Data
 COUNT DATE: 3/5/2012
 CURRENT YEAR: 2012
 ANALYSIS YEAR: 2021
 PSF: 1

Report Created: 05/03/2013

	Intersection Volume Development												Type	% Complete
	Eastbound			Westbound			Northbound			Southbound				
	Left	Thru	Right	Left	Thru	Right	Left	Thru	Right	Left	Thru	Right		
Existing Volume	159	721	0	7	478	645	0	0	0	290	0	98		
Diversions	0%	0%	0%	0%	0%	0%	0%	0%	0%	0%	0%	0%		
Peak Season Volume	159	721	0	7	478	645	0	0	0	290	0	98		
Committed Developments														
Groves Town Center *	0	22	0	0	29	58	0	0	0	44	0	0	NR	0%
Palm Beach State College *	0	28	0	0	24	40	0	0	0	47	0	0	NR	0%
Bink's Corporate Center	0	0	0	0	0	13	0	0	0	12	0	0	NR	0%
Loxahatchee Groves Commons *	0	23	0	0	24	49	0	0	0	47	0	0	NR	0%
Lazy F Ranch	0	0	0	0	0	0	0	0	0	0	0	0	NR	0%
Total Committed Developments	0	73	0	0	77	160	0	0	0	150	0	0		
Total Committed Residential	0	0	0	0	0	0	0	0	0	0	0	0		
Total Committed Non-Residential	0	73	0	0	77	160	0	0	0	150	0	0		
Double Count Reduction	0	0	0	0	0	0	0	0	0	0	0	0		
Total Discounted Committed	0	73	0	0	77	160	0	0	0	150	0	0		
Historical Growth	-81	-369	0	-4	-244	-330	0	0	0	-148	0	-50		
Comm Dev+1% Growth	15	141	0	1	122	220	0	0	0	177	0	9		
Growth Volume Used	15	141	0	1	122	220	0	0	0	177	0	9		
Total Volume	174	862	0	8	600	865	0	0	0	467	0	107		

* Manually corrected.

E-W Street: Southern Blvd
 N-S STREET: Binks Forest Dr
 TIME PERIOD: AM
 GROWTH RATE: -2.54%
 SIGNAL ID: 30718

Input Data
 COUNT DATE: 3/1/2012
 CURRENT YEAR: 2012
 ANALYSIS YEAR: 2021
 PSF: 1

Report Created: 05/03/2013

	Intersection Volume Development												Type	% Complete
	Eastbound			Westbound			Northbound			Southbound				
	Left	Thru	Right	Left	Thru	Right	Left	Thru	Right	Left	Thru	Right		
Existing Volume	5	984	120	138	817	18	203	18	524	19	26	7		
Diversions	0%	0%	0%	0%	0%	0%	0%	0%	0%	0%	0%	0%		
Peak Season Volume	5	984	120	138	817	18	203	18	524	19	26	7		
Committed Developments														
Groves Town Center *	14	28	0	15	14	3	0	18	7	8	5	3	NR	0%
Palm Beach State College *	96	4	0	0	120	0	0	12	0	14	2	0	NR	0%
Bink's Corporate Center	0	0	4	12	0	0	3	0	10	0	0	0	NR	0%
Loxahatchee Retail	0	1	0	0	1	0	0	0	0	0	0	0	NR	0%
Loxahatchee Groves Commons *	28	0	0	0	20	11	9	7	0	26	14	0	NR	0%
Lazy F Ranch	0	0	0	0	0	0	0	0	0	0	0	0	NR	0%
Bink's Forest Residential	0	0	2	4	0	0	8	0	20	0	0	0	Res	0%
Total Committed Developments	138	33	6	31	155	14	20	37	37	48	21	3		
Total Committed Residential	0	0	2	4	0	0	8	0	20	0	0	0		
Total Committed Non-Residential	138	33	4	27	155	14	12	37	17	48	21	3		
Double Count Reduction	0	0	1	1	0	0	2	0	3	0	0	0		
Total Discounted Committed	138	33	5	30	155	14	18	37	34	48	21	3		
		32	2	18	154		15		24					
Historical Growth	-1	-203	-25	-29	-169	-4	-42	-4	-108	-4	-5	-1		
Comm Dev+1% Growth	138	125	16	43	232	16	37	39	83	50	23	4		
Growth Volume Used	138	125	16	43	232	16	37	39	83	50	23	4		
Total Volume	143	1109	136	181	1049	34	240	57	607	69	49	11		

E-W Street: Southern Blvd
 N-S STREET: Binks Forest Dr
 TIME PERIOD: PM
 GROWTH RATE: -2.54%
 SIGNAL ID: 30718

Input Data
 COUNT DATE: 3/1/2012
 CURRENT YEAR: 2012
 ANALYSIS YEAR: 2021
 PSF: 1

Report Created: 05/03/2013

	Intersection Volume Development												Type	% Complete
	Eastbound			Westbound			Northbound			Southbound				
	Left	Thru	Right	Left	Thru	Right	Left	Thru	Right	Left	Thru	Right		
Existing Volume	7	1173	199	231	1040	32	240	49	216	15	15	5		
Diversions	0%	0%	0%	0%	0%	0%	0%	0%	0%	0%	0%	0%		
Peak Season Volume	7	1173	199	231	1040	32	240	49	216	15	15	5		
Committed Developments														
Groves Town Center *	34	69	0	117	109	7	0	45	17	65	43	22	NR	0%
Palm Beach State College *	76	16	0	0	95	0	0	9	0	64	8	0	NR	0%
Bink's Corporate Center	0	0	12	36	0	0	13	0	39	0	0	0	NR	0%
Loxahatchee Retail	0	13	0	5	14	0	0	0	4	0	0	0	NR	0%
Loxahatchee Groves Commons *	70	0	0	0	51	28	23	19	0	83	44	0	NR	0%
Lazy F Ranch	0	0	0	0	0	0	0	0	0	0	0	0	NR	0%
Bink's Forest Residential	0	0	7	19	0	0	4	0	9	0	0	0	Res	0%
Total Committed Developments	180	98	19	177	269	35	40	73	69	212	95	22		
Total Committed Residential	0	0	7	19	0	0	4	0	9	0	0	0		
Total Committed Non-Residential	180	98	12	158	269	35	36	73	60	212	95	22		
Double Count Reduction	0	0	2	5	0	0	1	0	2	0	0	0		
Total Discounted Committed	180	98	17	172	269	35	39	73	67	212	95	22		
		35	12	153	255		3		56					
Historical Growth	-1	-242	-41	-48	-215	-7	-50	-10	-45	-3	-3	-1		
Comm Dev+1% Growth	181	208	36	194	366	38	61	78	87	213	96	22		
Growth Volume Used	181	208	36	194	366	38	61	78	87	213	96	22		
Total Volume	188	1381	235	425	1406	70	301	127	303	228	111	27		

* Manually adjusted.

E-W Street: Southern Blvd Input Data COUNT DATE: 3/1/2012 Report Created: 05/03/2013
 N-S STREET: Big Blue Trce CURRENT YEAR: 2012
 TIME PERIOD: AM ANALYSIS YEAR: 2021
 GROWTH RATE: 1.15% PSF: 1
 SIGNAL ID: 30726

	Intersection Volume Development												Type	% Complete
	Eastbound			Westbound			Northbound			Southbound				
	Left	Thru	Right	Left	Thru	Right	Left	Thru	Right	Left	Thru	Right		
Existing Volume	5	1428	71	228	1026	21	128	13	713	19	29	7		
Diversions	0%	0%	0%	0%	0%	0%	0%	0%	0%	0%	0%	0%		
Peak Season Volume	5	1428	71	228	1026	21	128	13	713	19	29	7		
Committed Developments														
Palms West Hospital	0	3	0	0	1	0	0	0	0	0	0	0	NR	95%
Everglades Farm Equipment	0	10	0	0	5	0	0	0	1	0	0	0	NR	50%
Groves Town Center *	0	8	5	0	24	0	13	0	0	0	0	0	NR	0%
Palm Beach State College *	0	16	2	0	108	0	12	0	0	0	0	0	NR	0%
Loxahatchee Retail	0	1	0	0	2	0	0	0	0	0	0	0	NR	0%
Southern Crossing MUPD	0	8	3	0	32	0	11	0	0	0	0	0	NR	0%
Cypress Key	0	9	0	11	5	0	0	0	19	0	0	0	NR	0%
Loxahatchee Groves Commons *	0	17	9	0	20	0	11	0	0	0	0	0	NR	0%
Lazy F Ranch	0	0	0	0	0	0	0	0	0	0	0	0	NR	0%
Palms West Medical	0	4	0	0	1	0	0	0	0	0	0	0	NR	92%
Total Committed Developments	0	76	19	11	198	0	47	0	20	0	0	0		
Total Committed Residential	0	0	0	0	0	0	0	0	0	0	0	0		
Total Committed Non-Residential	0	76	19	11	198	0	47	0	20	0	0	0		
Double Count Reduction	0	0	0	0	0	0	0	0	0	0	0	0		
Total Discounted Committed	0	76	19	11	198	0	47	0	20	0	0	0		
Historical Growth	1	155	8	25	111	2	14	1	77	2	3	1		
Comm Dev+1% Growth	0	210	26	32	294	2	59	1	87	2	3	1		
Growth Volume Used	1	210	26	32	294	2	59	1	87	2	3	1		
Total Volume	6	1638	97	260	1320	23	187	14	800	21	32	8		

E-W Street: Southern Blvd Input Data COUNT DATE: 3/1/2012 Report Created: 05/03/2013
 N-S STREET: Big Blue Trce CURRENT YEAR: 2012
 TIME PERIOD: PM ANALYSIS YEAR: 2021
 GROWTH RATE: 1.15% PSF: 1
 SIGNAL ID: 30726

	Intersection Volume Development												Type	% Complete
	Eastbound			Westbound			Northbound			Southbound				
	Left	Thru	Right	Left	Thru	Right	Left	Thru	Right	Left	Thru	Right		
Existing Volume	5	1255	116	555	1336	42	75	16	247	18	24	7		
Diversions	0%	0%	0%	0%	0%	0%	0%	0%	0%	0%	0%	0%		
Peak Season Volume	5	1255	116	555	1336	42	75	16	247	18	24	7		
Committed Developments														
Palms West Hospital	0	2	0	0	3	0	0	0	0	0	0	0	NR	95%
Everglades Farm Equipment	0	13	0	1	14	0	0	0	1	0	0	0	NR	50%
Groves Town Center *	0	64	35	0	48	0	26	0	0	0	0	0	NR	0%
Palm Beach State College *	0	72	8	0	85	0	9	0	0	0	0	0	NR	0%
Loxahatchee Retail	0	20	5	0	19	0	4	0	0	0	0	0	NR	0%
Southern Crossing MUPD	0	59	20	0	33	0	11	0	0	0	0	0	NR	0%
Cypress Key	0	14	0	39	18	0	0	0	31	0	0	0	NR	0%
Loxahatchee Groves Commons *	0	53	29	0	51	0	28	0	0	0	0	0	NR	0%
Lazy F Ranch	0	0	0	0	0	0	0	0	0	0	0	0	NR	0%
Palms West Medical	0	2	0	0	5	0	0	0	0	0	0	0	NR	92%
Total Committed Developments	0	299	97	40	276	0	78	0	32	0	0	0		
Total Committed Residential	0	0	0	0	0	0	0	0	0	0	0	0		
Total Committed Non-Residential	0	299	97	40	276	0	78	0	32	0	0	0		
Double Count Reduction	0	0	0	0	0	0	0	0	0	0	0	0		
Total Discounted Committed	0	299	97	40	276	0	78	0	32	0	0	0		
Historical Growth	1	136	13	60	145	5	8	2	27	2	3	1		
Comm Dev+1% Growth	0	417	108	92	401	4	85	1	55	2	2	1		
Growth Volume Used	1	417	108	92	401	5	85	2	55	2	3	1		
Total Volume	6	1672	224	647	1737	47	160	18	302	20	27	8		

* Manually adjusted.

E-W Street: Southern Blvd
 N-S STREET: Forest Hill Blvd
 TIME PERIOD: AM
 GROWTH RATE: -0.59%
 SIGNAL ID: 30735

Input Data
 COUNT DATE: 3/5/2012
 CURRENT YEAR: 2012
 ANALYSIS YEAR: 2021
 PSF: 1

Report Created: 05/03/2013

	Intersection Volume Development												Type	% Complete
	Eastbound			Westbound			Northbound			Southbound				
	Left	Thru	Right	Left	Thru	Right	Left	Thru	Right	Left	Thru	Right		
Existing Volume	223	1647	280	379	915	165	356	375	1092	508	570	262		
Diversions	0%	0%	0%	0%	0%	0%	0%	0%	0%	0%	0%	0%		
Peak Season Volume	223	1647	280	379	915	165	356	375	1092	508	570	262		
Committed Developments														
Palms West Hospital	1	2	1	0	4	0	2	0	0	0	0	2	NR	95%
Western Plaza	0	1	0	1	0	2	0	0	1	3	0	0	NR	89%
Everglades Farm Equipment	1	2	1	0	4	0	1	0	0	0	0	2	NR	50%
Groves Town Center **	0	0	0	0	0	0	0	0	0	0	0	0	NR	0%
Palm Beach State College *	5	5	5	0	36	0	36	0	0	0	0	36	NR	0%
Wellington Mall	0	0	1	0	0	0	1	1	0	0	1	0	NR	90%
Grove Medical	1	1	1	0	4	0	3	0	0	0	0	2	NR	0%
Southern Crossing MUPD	2	5	2	0	18	0	7	0	0	0	0	7	NR	0%
Cypress Key	0	28	0	20	16	9	0	0	36	17	0	0	NR	0%
Loxahatchee Groves Commons	1	1	2	0	2	0	3	0	0	0	0	2	NR	0%
Lazy F Ranch	0	0	0	0	0	0	0	0	0	0	0	0	NR	0%
Southern Center	0	1	0	1	1	1	0	0	1	1	0	0	NR	90%
Palms West Medical	1	2	1	0	6	0	4	0	0	0	0	3	NR	92%
Total Committed Developments	12	48	14	22	91	12	57	1	38	21	1	54		
Total Committed Residential	0	0	0	0	0	0	0	0	0	0	0	0		
Total Committed Non-Residential	12	48	14	22	91	12	57	1	38	21	1	54		
Double Count Reduction	0	0	0	0	0	0	0	0	0	0	0	0		
Total Discounted Committed	12	48	14	22	91	12	57	1	38	21	1	54		
	7	39	9		63		42					41		
Historical Growth	-12	-85	-15	-20	-47	-9	-18	-19	-57	-26	-30	-14		
Comm Dev+1% Growth	33	202	40	58	177	27	90	36	140	69	54	79		
Growth Volume Used	33	202	40	58	177	27	90	36	140	69	54	79		
Total Volume	256	1849	320	437	1092	192	446	411	1232	577	624	341		

E-W Street: Southern Blvd
 N-S STREET: Forest Hill Blvd
 TIME PERIOD: PM
 GROWTH RATE: -0.59%
 SIGNAL ID: 30735

Input Data
 COUNT DATE: 3/5/2012
 CURRENT YEAR: 2012
 ANALYSIS YEAR: 2021
 PSF: 1

Report Created: 05/03/2013

	Intersection Volume Development												Type	% Complete
	Eastbound			Westbound			Northbound			Southbound				
	Left	Thru	Right	Left	Thru	Right	Left	Thru	Right	Left	Thru	Right		
Existing Volume	379	1129	331	873	1509	450	330	629	605	275	584	203		
Diversions	0%	0%	0%	0%	0%	0%	0%	0%	0%	0%	0%	0%		
Peak Season Volume	379	1129	331	873	1509	450	330	629	605	275	584	203		
Committed Developments														
Palms West Hospital	2	4	2	0	2	0	1	0	0	0	0	1	NR	95%
Western Plaza	0	1	0	2	1	5	0	0	1	5	0	0	NR	89%
Everglades Farm Equipment	2	6	1	0	6	0	1	0	0	0	0	2	NR	50%
Groves Town Center *	15	20	29	0	15	0	22	0	0	0	0	11	NR	0%
Palm Beach State College *	24	24	24	0	28	0	28	0	0	0	0	28	NR	0%
Wellington Mall	0	1	3	0	1	1	2	2	0	1	3	0	NR	90%
Grove Medical	3	6	4	0	2	0	1	0	0	0	0	1	NR	0%
Southern Crossing MUPD	13	33	13	0	19	0	7	0	0	0	0	7	NR	0%
Cypress Key	0	46	0	74	58	34	0	0	58	27	0	0	NR	0%
Loxahatchee Groves Commons	10	14	20	0	13	0	19	0	0	0	0	9	NR	0%
Lazy F Ranch	0	0	0	0	0	0	0	0	0	0	0	0	NR	0%
Southern Center	0	3	0	4	4	4	0	0	4	4	0	0	NR	90%
Palms West Medical	3	6	4	0	2	0	2	0	0	0	0	1	NR	92%
Total Committed Developments	72	164	100	80	151	44	83	2	63	37	3	60		
Total Committed Residential	0	0	0	0	0	0	0	0	0	0	0	0		
Total Committed Non-Residential	72	164	100	80	151	44	83	2	63	37	3	60		
Double Count Reduction	0	0	0	0	0	0	0	0	0	0	0	0		
Total Discounted Committed	72	164	100	80	151	44	83	2	63	37	3	60		
	67	152	95		143		81					57		
Historical Growth	-20	-59	-17	-45	-78	-23	-17	-33	-31	-14	-30	-11		
Comm Dev+1% Growth	108	270	131	162	292	86	114	61	120	63	58	79		
Growth Volume Used	108	270	131	162	292	86	114	61	120	63	58	79		
Total Volume	487	1399	462	1035	1801	536	444	690	725	338	642	282		

* Manually adjusted.
 ** Insignificant.

Input Data

E-W Street: Southern Blvd	COUNT DATE: 2/29/2012	Report Created: 05/03/2013
N-S STREET: Royal Palm Beach Blvd	CURRENT YEAR: 2012	
TIME PERIOD: AM	ANALYSIS YEAR: 2021	
GROWTH RATE: -0.15%	PSF: 1	
SIGNAL ID: 30750		

	Intersection Volume Development											Type	% Complete	
	Eastbound			Westbound			Northbound			Southbound	Right			
	Left	Thru	Right	Left	Thru	Right	Left	Thru	Right	Left	Thru	Right		
Existing Volume	191	2992	37	24	1300	226	30	7	33	600	5	166		
Diversions	0%	0%	0%	0%	0%	0%	0%	0%	0%	0%	0%	0%		
Peak Season Volume	191	2992	37	24	1300	226	30	7	33	600	5	166		
Committed Developments														
Palms West Hospital	0	1	0	0	3	0	0	0	0	0	0	0	NR	95%
Western Plaza	0	4	0	0	4	2	0	0	0	3	0	0	NR	89%
Martingale Meadows	0	3	0	0	8	3	0	0	0	1	0	0	Res	0%
Seven Eleven	0	17	0	0	17	8	0	0	0	8	0	0	NR	0%
Cypress Key	1	20	0	0	34	0	0	0	0	0	0	3	NR	0%
Lazy F Ranch	0	0	0	0	0	0	0	0	0	0	0	0	NR	0%
Rubin Commercial	0	22	0	0	18	11	0	0	0	13	0	0	NR	0%
Isla Verde	0	1	0	0	1	1	0	0	0	1	0	0	NR	68%
Southern Center	0	3	0	0	2	1	0	0	0	2	0	0	NR	90%
Palms West Medical	0	1	0	0	4	0	0	0	0	0	0	0	NR	92%
Olympia	0	1	0	0	4	2	0	0	0	1	0	0	Res	90%
Total Committed Developments	1	73	0	0	95	28	0	0	0	29	0	3		
Total Committed Residential	0	4	0	0	12	5	0	0	0	2	0	0		
Total Committed Non-Residential	1	69	0	0	83	23	0	0	0	27	0	3		
Double Count Reduction	0	1	0	0	3	1	0	0	0	1	0	0		
Total Discounted Committed	1	72	0	0	92	27	0	0	0	28	0	3		
	0	10			15	5				6		0		
Historical Growth	-3	-40	0	0	-17	-3	0	0	0	-8	0	-2		
Comm Dev+1% Growth	19	352	3	2	214	48	3	1	3	84	0	19		
Growth Volume Used	19	352	3	2	214	48	3	1	3	84	0	19		
Total Volume	210	3344	40	26	1514	274	33	8	36	684	5	185		

Input Data

E-W Street: Southern Blvd	COUNT DATE: 2/29/2012	Report Created: 05/03/2013
N-S STREET: Royal Palm Beach Blvd	CURRENT YEAR: 2012	
TIME PERIOD: PM	ANALYSIS YEAR: 2021	
GROWTH RATE: -0.15%	PSF: 1	
SIGNAL ID: 30750		

	Intersection Volume Development											Type	% Complete	
	Eastbound			Westbound			Northbound			Southbound	Right			
	Left	Thru	Right	Left	Thru	Right	Left	Thru	Right	Left	Thru	Right		
Existing Volume	240	1965	32	44	2164	407	31	5	32	373	11	160		
Diversions	0%	0%	0%	0%	0%	0%	0%	0%	0%	0%	0%	0%		
Peak Season Volume	240	1965	32	44	2164	407	31	5	32	373	11	160		
Committed Developments														
Palms West Hospital	0	3	0	0	2	0	0	0	0	0	0	0	NR	95%
Western Plaza	0	7	0	0	8	5	0	0	0	5	0	0	NR	89%
Wellington Mall	0	1	0	0	1	0	0	0	0	0	0	0	NR	90%
Martingale Meadows	0	9	0	0	5	2	0	0	0	3	0	0	Res	0%
Seven Eleven	0	17	0	0	17	8	0	0	0	8	0	0	NR	0%
Cypress Key	5	71	0	0	56	0	0	0	0	0	0	4	NR	0%
Lazy F Ranch	0	0	0	0	0	0	0	0	0	0	0	0	NR	0%
Rubin Commercial	0	65	0	0	69	42	0	0	0	39	0	0	NR	0%
Isla Verde	0	2	0	0	2	2	0	0	0	2	0	0	NR	68%
Southern Center	0	12	0	0	13	6	0	0	0	6	0	0	NR	90%
Palms West Medical	0	4	0	0	2	0	0	0	0	0	0	0	NR	92%
Olympia	0	3	0	0	2	1	0	0	0	1	0	0	Res	90%
Total Committed Developments	5	194	0	0	177	66	0	0	0	64	0	4		
Total Committed Residential	0	12	0	0	7	3	0	0	0	4	0	0		
Total Committed Non-Residential	5	182	0	0	170	63	0	0	0	60	0	4		
Double Count Reduction	0	3	0	0	2	1	0	0	0	1	0	0		
Total Discounted Committed	5	191	0	0	175	65	0	0	0	63	0	4		
		165			155	55				52				
Historical Growth	-3	-26	0	-1	-29	-5	0	0	0	-5	0	-2		
Comm Dev+1% Growth	27	375	3	4	378	103	3	0	3	98	1	19		
Growth Volume Used	27	375	3	4	378	103	3	0	3	98	1	19		
Total Volume	267	2340	35	48	2542	510	34	5	35	471	12	179		

E-W Street: Okeechobee Blvd
 N-S STREET: Seminole Pratt Whitney Rd
 TIME PERIOD: AM
 GROWTH RATE: 0
 SIGNAL ID: 27660

Input Data
 COUNT DATE: 4/26/2012
 CURRENT YEAR: 2012
 ANALYSIS YEAR: 2021
 PSF: 1

Report Created: 05/03/2013

Intersection Volume Development

	Eastbound			Westbound			Northbound			Southbound			Type	% Complete	
	Left	Thru	Right	Left	Thru	Right	Left	Thru	Right	Left	Thru	Right			
Existing Volume	10	108	92	78	18	214	10	183	55	329	610	4			
Diversions	0%	0%	0%	0%	0%	0%	0%	0%	0%	0%	0%	0%			
Peak Season Volume	10	108	92	78	18	214	10	183	55	329	610	4			
Committed Developments															
Groves Town Center	0	0	0	0	0	2	0	13	0	4	26	0	0	NR	0%
Loxahatchee Groves Commons	0	0	0	0	0	0	0	3	0	1	5	0	0	NR	0%
Lazy F Ranch	0	0	0	0	0	0	0	0	0	0	0	0	0	NR	0%
Total Committed Developments	0	0	0	0	0	2	0	16	0	5	31	0	0		
Total Committed Residential	0	0	0	0	0	0	0	0	0	0	0	0	0		
Total Committed Non-Residential	0	0	0	0	0	2	0	16	0	5	31	0	0		
Double Count Reduction	0	0	0	0	0	0	0	0	0	0	0	0	0		
Total Discounted Committed	0	0	0	0	0	2	0	16	0	5	31	0	0		
Historical Growth															
Comm Dev+1% Growth	1	10	9	7	2	22	1	33	5	36	88	0	0		
Growth Volume Used	1	10	9	7	2	22	1	33	5	36	88	0	0		
Total Volume	11	118	101	85	20	236	11	216	60	365	698	4	4		

E-W Street: Okeechobee Blvd
 N-S STREET: Seminole Pratt Whitney Rd
 TIME PERIOD: PM
 GROWTH RATE: 0
 SIGNAL ID: 27660

Input Data
 COUNT DATE: 4/26/2012
 CURRENT YEAR: 2012
 ANALYSIS YEAR: 2021
 PSF: 1

Report Created: 05/03/2013

Intersection Volume Development

	Eastbound			Westbound			Northbound			Southbound			Type	% Complete	
	Left	Thru	Right	Left	Thru	Right	Left	Thru	Right	Left	Thru	Right			
Existing Volume	2	33	29	67	76	304	60	554	63	205	302	13			
Diversions	0%	0%	0%	0%	0%	0%	0%	0%	0%	0%	0%	0%			
Peak Season Volume	2	33	29	67	76	304	60	554	63	205	302	13			
Committed Developments															
Groves Town Center	0	0	0	0	0	6	0	47	0	5	36	0	0	NR	0%
Loxahatchee Groves Commons	0	0	0	0	0	4	0	30	0	4	28	0	0	NR	0%
Lazy F Ranch	0	0	0	0	0	0	0	0	0	0	0	0	0	NR	0%
Total Committed Developments	0	0	0	0	0	10	0	77	0	9	64	0	0		
Total Committed Residential	0	0	0	0	0	0	0	0	0	0	0	0	0		
Total Committed Non-Residential	0	0	0	0	0	10	0	77	0	9	64	0	0		
Double Count Reduction	0	0	0	0	0	0	0	0	0	0	0	0	0		
Total Discounted Committed	0	0	0	0	0	10	0	77	0	9	64	0	0		
Historical Growth															
Comm Dev+1% Growth	0	3	3	6	7	38	6	129	6	28	92	1	1		
Growth Volume Used	0	3	3	6	7	38	6	129	6	28	92	1	1		
Total Volume	2	36	32	73	83	342	66	683	69	233	394	14	14		