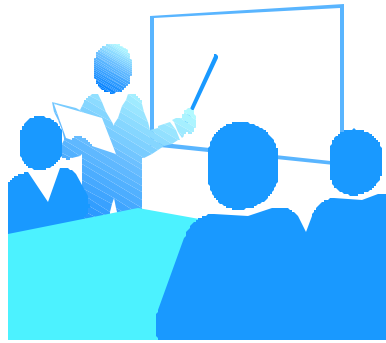


LIGHTING STANDARDS- PUBLIC MEETING
DATE: MAY 10TH 2005
TIME: 5:00PM



AGENDA

- **Introduction**
- **History of Lighting**
- **Existing PBC Lighting Standard**
- **Key Elements of the Proposed Standards**
- **Non Regulated Elements**
- **Q&A – General Discussion**

**OUTDOOR LIGHTING PUBLIC MEETING
MINUTES MAY 10, 2005**

Present

Howard Kosewsky	Power & Lighting System
Kirt Rusenko	Gumbo Limbo Nature Center
Andrew Youngross	Thompson Youngross
Jim Gillespie	Brannon & Gillespie LLC.
Leonard Devine	PBC Buildings
Lenny Berger	PBC Assist Attorney
Barbara Noble	LDRAB & LDRAB Subcommittee Member
Scott Worley	LDRAB

- Mr. Buscemi handed out copies of the Meeting Agenda.
- Mr. Buscemi conducted a presentation outlining the history of outdoor lighting within PBC, existing PBC Lighting Standards, key elements of the Proposed Standards (including glare, lighting trespass, height, existing non-conforming lighting, Comparison Chart with other Lighting Standards for the Municipalities within PBC.
- Mr. Buscemi also reviewed non-Regulated elements IE: Type of Light Source (Metal Halide, High Pressure Sodium etc.)
- Mr. Buscemi presented as a handout the latest copy of the Proposed Outdoor Lighting Standards dated 5-12-05 and informed the attendees, that these standards were developed by Building and Zoning Staff, LDRAB Outdoor Lighting Subcommittee members & industry representatives. He explained that public/industry input is very important at this time in the process and that the final version of these Standards will be presented to the LDRAB Board on June 8, 2005.

The Following items were discussed:

- A. Utilize the Definition from the IES Handbook for **“Full Cut Off Luminaries.”**
- B. The portion of the Definition on **Illuminance Levels**, which describes “The level occurring just prior to lamp replacement”, should be clarified by inserting “manufactures mean lumen value.”
- C. Mr. Busemi stated that current ULDC Requirements within the Westgate CRA overlay which **Prohibits Rooftop Lighting** does not apply to a light fixture which may be required by the Florida Bldg Code. (Example: A required light fixture at a stair bulkhead).

- D.** Include “**Town Houses**” to the Residential exemptions section.
- E.** The actual values calculations for **Light Loss Factor** (LLF) should be included as part of the Photometric Plan Calculations. Values for metal halide and high-pressure sodium should be listed.
- F.** Delete the last sentence in the definition for light trespass which states” No line of sight to a glaring light source is permitted at the property line of a residential or public right of way by an observer viewing from a position that is level with on higher than the ground below the luminaries,” as this statement would be difficult to enforce.
- G.** Areas requiring **Security Lighting** should be consistent with the current Security Ordinance. These areas would be, active entrances of buildings, parking lots, and access to buildings or parking lots.
- H.** Minimum illumination levels grid point readings be allows to deviate up to 5 % of the number of grid point readings, but in no case should the illumination level be less that 0.5 fc. This would assist with actual field deviations and error of margin. Staff will consider this request and forward to Code Enforcement Staff for comment.
- I.** Fully shielded bollards should be permitted along a walkway if they are not more than 42” in height and limited to 20 fc at its base.
- J.** In table 5.E.3.D-“Maximum Permitted Luminaries Height” fixtures on the top parking level of a parking structure should be allowed to be increased to 25 ft for interior areas if no perimeter luminaries are utilized.
- K.** Delete the measurement provision that requires that luminaries be measured first on and then off to determine fc levels. This deletion was requested by Code Enforcement Staff and all parties agreed.
- L.** Delete the last sentence in the Definition for Light Trespass which states “No Line of Sight to a glaring light sources is permitted by the Property line of a Residential or Public right of way by an observer viewing from a position that is level with or higher that the ground below the luminaries,” as this statement would be difficult to enforce.