

RESOLUTION NO. R-2000- 0115

RESOLUTION APPROVING ZONING PETITION Z82-002(B)  
OFFICIAL ZONING MAP AMENDMENT (REZONING)  
PETITION OF WCI COMMUNITIES LTD.  
BY ROBERT HIGGINS, AGENT  
(BISHOP PROPERTY)

WHEREAS, the Board of County Commissioners, as the governing body of Palm Beach County, Florida, pursuant to the authority vested in Chapter 163 and Chapter 125, Florida Statutes, is authorized and empowered to consider petitions relating to zoning; and

WHEREAS, the notice and public hearing requirements, as provided for in Article 5 (Development Review Procedures) of the Palm Beach County Unified Land Development Code (Ordinance 92-20, as amended), have been satisfied; and

WHEREAS, Zoning Petition Z82-002(B) was presented to the Board of County Commissioners at a public hearing conducted on January 27, 2000; and

WHEREAS, the Board of County Commissioners has considered the evidence and testimony presented by the petitioner and other interested parties, the recommendations of the various county review agencies, and the recommendation of the Zoning Commission; and

WHEREAS, the Board of County Commissioners made the following findings of fact:

1. This official zoning map amendment (rezoning) is consistent with the Palm Beach County Comprehensive Plan;
2. This official zoning map amendment (rezoning) is consistent with the requirements of the Palm Beach County Unified Land Development Code;
3. This official zoning map amendment (rezoning) is compatible with surrounding uses and zones, as defined in the Palm Beach County Unified Land Development Code, is generally consistent with existing uses and zones surrounding the subject land, and is the appropriate zoning district for the land;
4. This official zoning map amendment (rezoning) does not result in significantly adverse impacts on the natural environment, including but not limited to water, air, stormwater management, wildlife, vegetation, wetlands, and the natural functioning of the environment;
5. This official zoning map amendment (rezoning) will result in a logical and orderly development pattern;
6. This official zoning map amendment (rezoning) complies with Article 11 (Adequate Public Facilities Standards) of the Palm Beach County Unified Land Development Code; and,
7. This official zoning map amendment (rezoning) is consistent with the requirements of all other applicable local land development regulations.

WHEREAS, Article 5, Section 5.3.D.9 (Action by Board of County Commissioners) of the Palm Beach County Unified Land Development Code requires that the action of the Board of County Commissioners be adopted by resolution.

NOW, THEREFORE, BE IT RESOLVED BY THE BOARD OF COUNTY COMMISSIONERS OF PALM BEACH COUNTY, FLORIDA, that Zoning Petition Z82-002(B), the petition of WCI Communities Ltd., by Robert Higgins, agent, for an OFFICIAL ZONING MAP AMENDMENT (REZONING) from the Agricultural Residential (AR) Zoning District to the Special Agricultural (SA) Zoning District on a parcel of land legally described in EXHIBIT A, attached hereto and made a part hereof, and generally located as indicated on a vicinity sketch attached as EXHIBIT B, attached hereto and made a part hereof, was approved on January 27, 2000.

Commissioner Marcus moved for the approval of the Resolution.

The motion was seconded by Commissioner McCarty and, upon being put to a vote, the vote was as follows:

Maude Ford Lee, Chair	-	Aye
Warren Newell, Vice Chair	-	Aye
Karen T. Marcus	-	Aye
Carol A. Roberts	-	Aye
Mary McCarty	-	Aye
Burt Aaronson	-	Aye
Tony Masilotti	-	Absent

The Chair thereupon declared that the resolution was duly passed and adopted on January 27, 2000.

APPROVED AS TO FORM  
AND LEGAL SUFFICIENCY

PALM BEACH COUNTY, FLORIDA  
BY ITS BOARD OF COUNTY  
COMMISSIONERS

DOROTHY H. WILKEN, CLERK

BY:   
COUNTY ATTORNEY

BY:   
DEPUTY CLERK

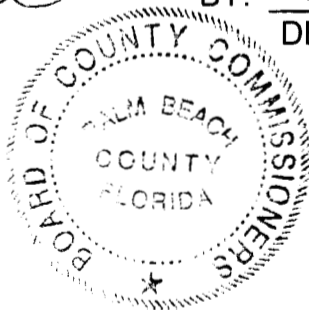
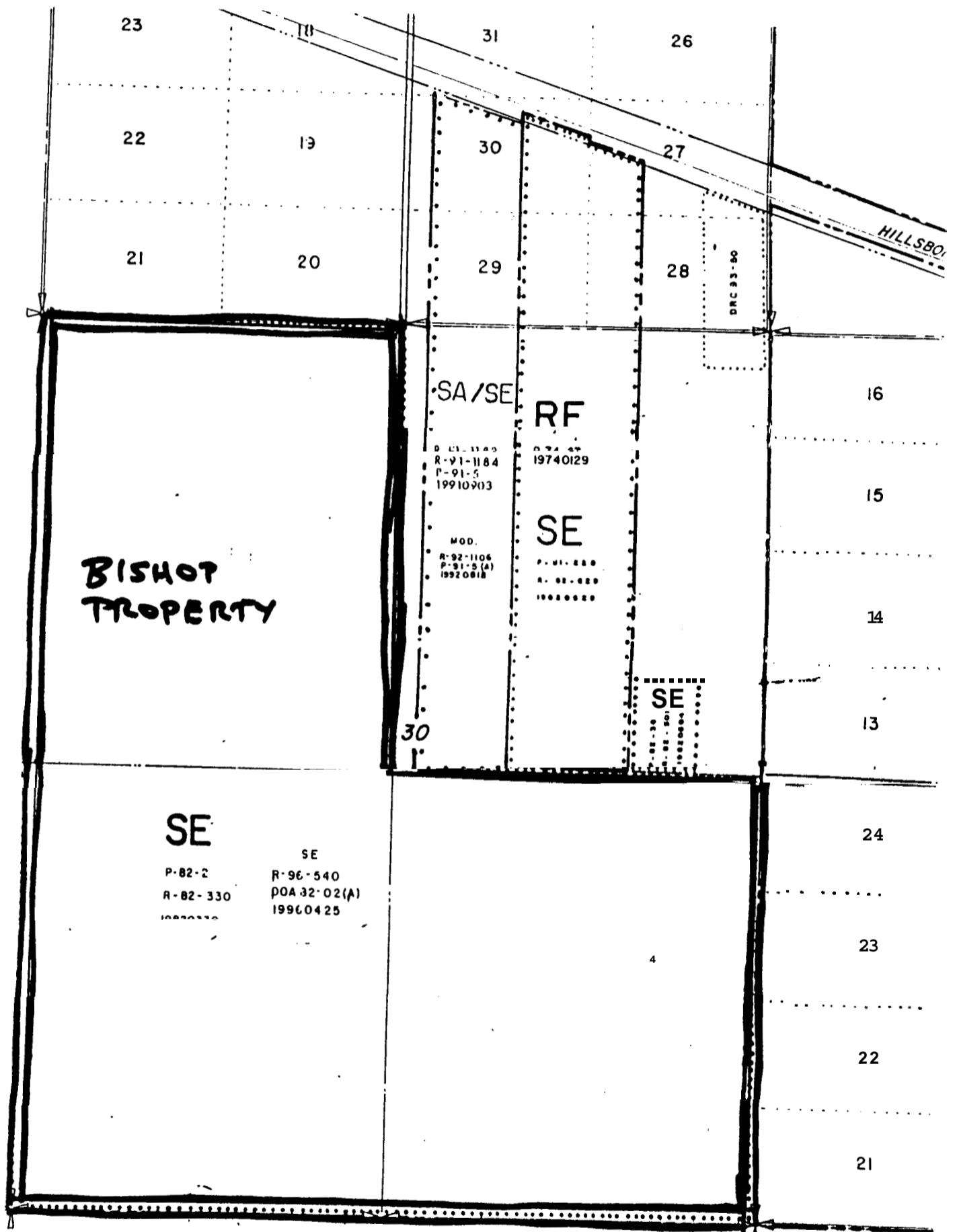


EXHIBIT A  
LEGAL DESCRIPTION

**THE NORTHWEST QUARTER OF SECTION 30, TOWNSHIP 47 SOUTH, RANGE 41 EAST, AND THE SOUTH HALF OF SECTION 30, TOWNSHIP 47 SOUTH, RANGE 41 EAST, AND THE WEST 118.81 FEET OF THE NORTHEAST QUARTER OF SECTION 30, TOWNSHIP 47 SOUTH, RANGE 41 EAST, ALL IN PALM BEACH COUNTY, FLORIDA, CONTAINING 413.102 ACRES MORE OR LESS.**

EXHIBIT B  
VICINITY SKETCH



NTS