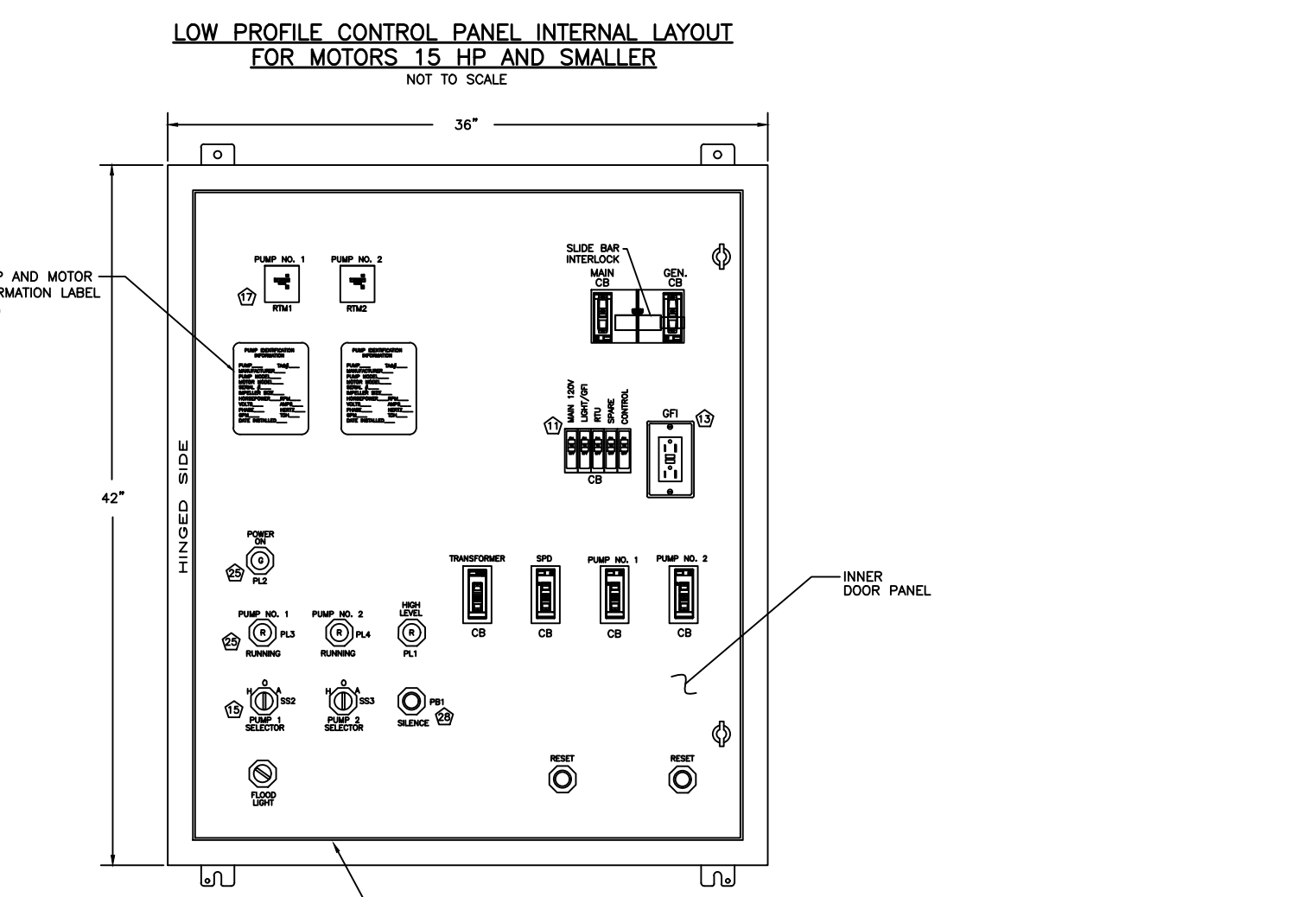


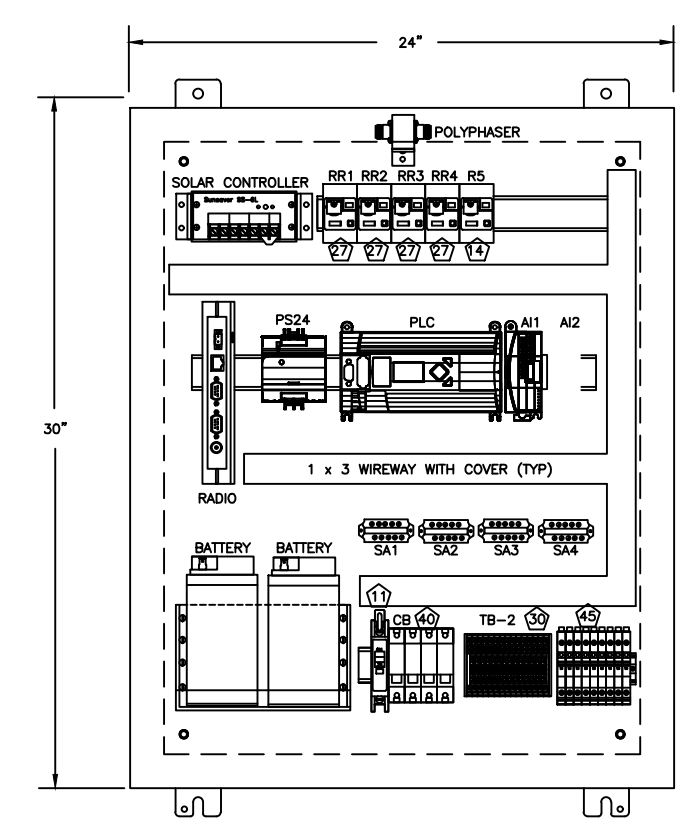
- NOTES:
1. LOW PROFILE CONTROL PANEL DETAIL ONLY USED AT THE COUNTY'S DISCRETION FOR THE LIFT STATION SITES WHICH HAVE SITE CONSTRAINTS.
 2. SEE BILL OF MATERIALS.
- LOW PROFILE CONTROL PANEL SPECIFICATION:
1. THE SPECIFICATIONS OF THE LOW PROFILE CONTROL PANEL ARE THE SAME AS THE STANDARD LIFT STATION PANEL SPECIFICATIONS EXCEPT THE SIZE. THE LOW PROFILE CONTROL PANEL BE 36" x 42" x 12".



LOW PROFILE CONTROL PANEL INNER DOOR LAYOUT FOR MOTORS 15HP AND SMALLER NOT TO SCALE

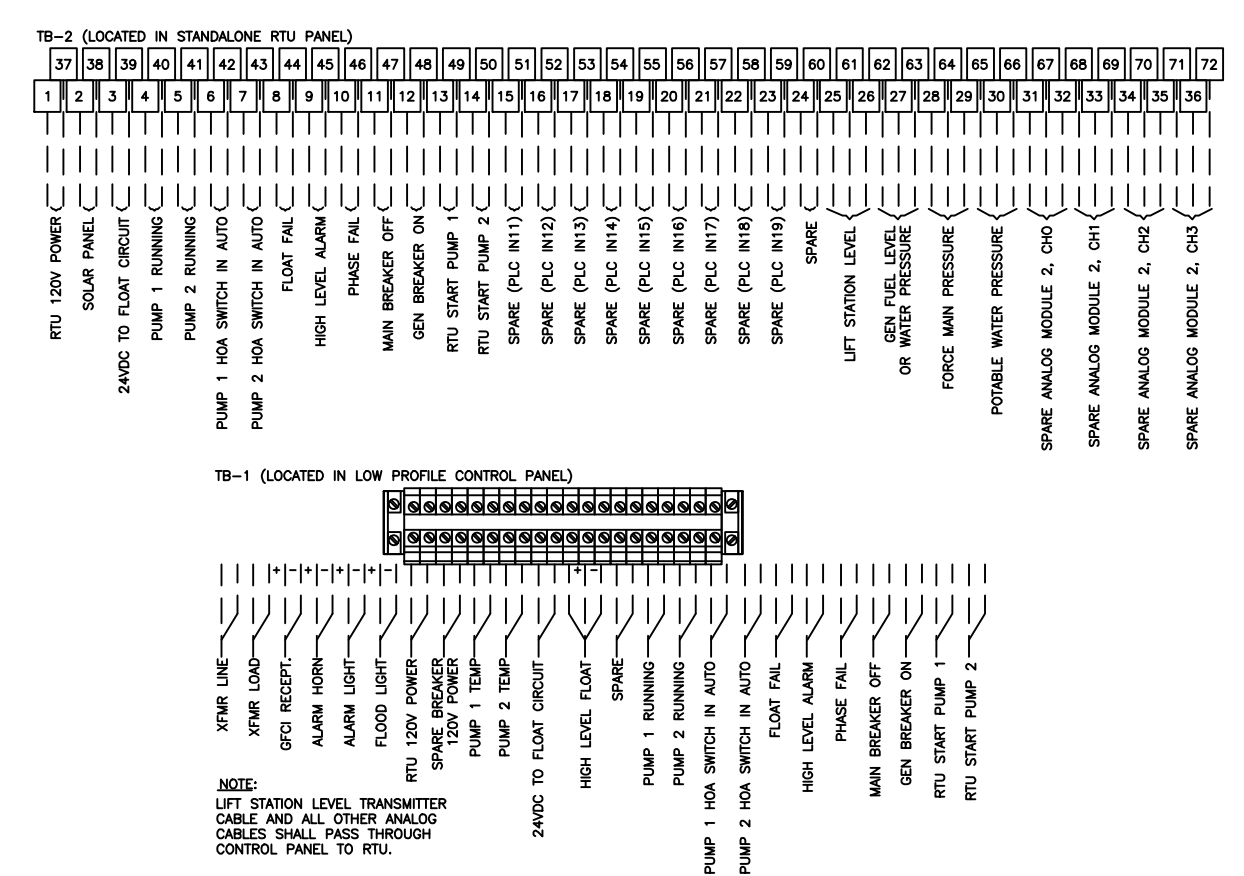
LIFT STATION LOW PROFILE CONTROL PANEL LAYOUT FOR MOTORS 15HP AND SMALLER

* 82S



- NOTES:
1. STANDALONE RTU SHALL BE PROVIDED WITH LOW PROFILE CONTROL PANEL ONLY.
 2. SEE STANDARD REMOTE TELEMETRY UNIT SPECIFICATIONS SHEET 1 TO SHEET 5.
 3. SEE BILL OF MATERIALS.

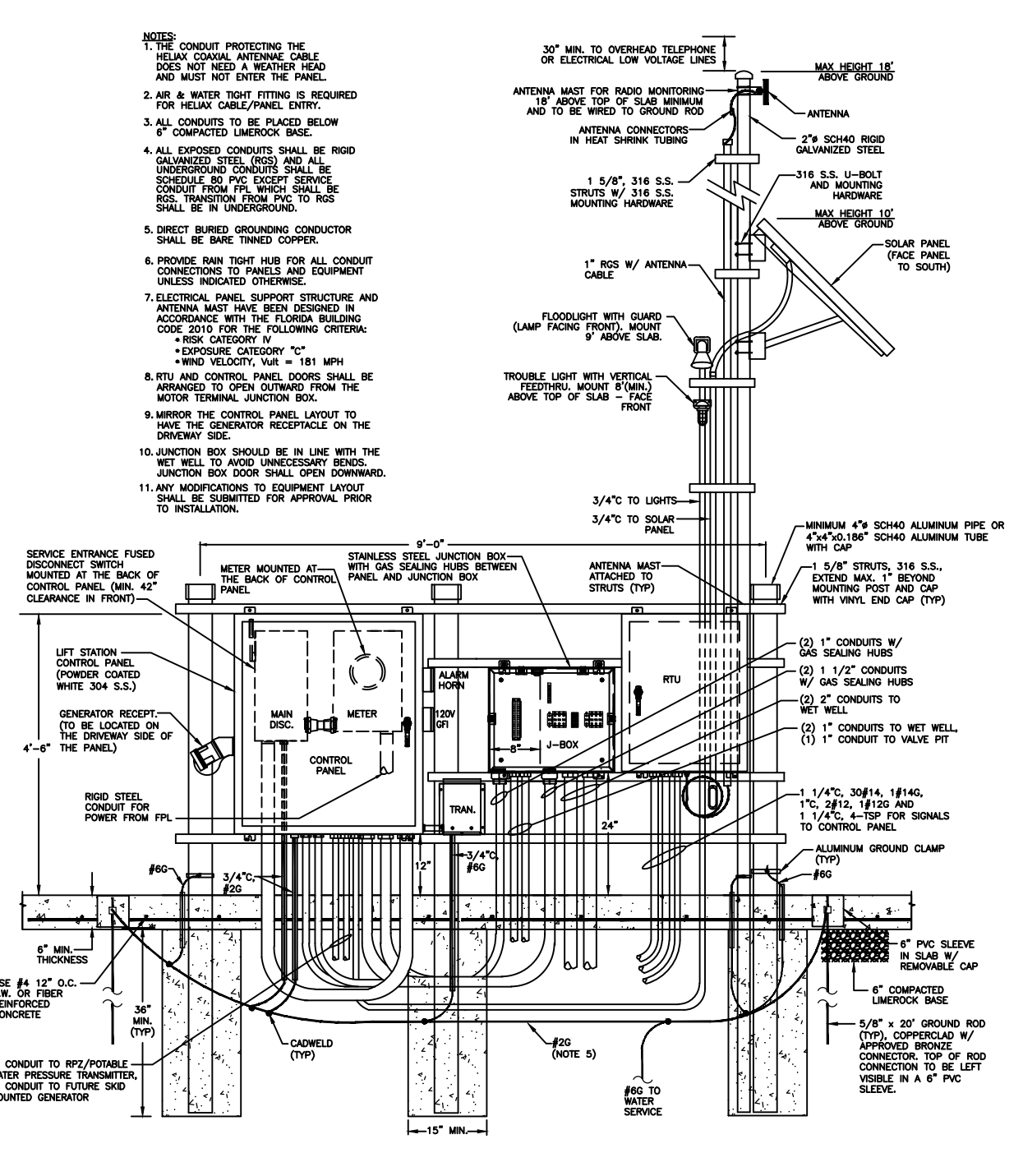
STANDALONE RTU PANEL LAYOUT NOT TO SCALE



TERMINAL BLOCKS LAYOUT NOT TO SCALE

LIFT STATION STANDALONE RTU PANEL LAYOUT FOR TO BE USED WITH LOW PROFILE CONTROL PANEL

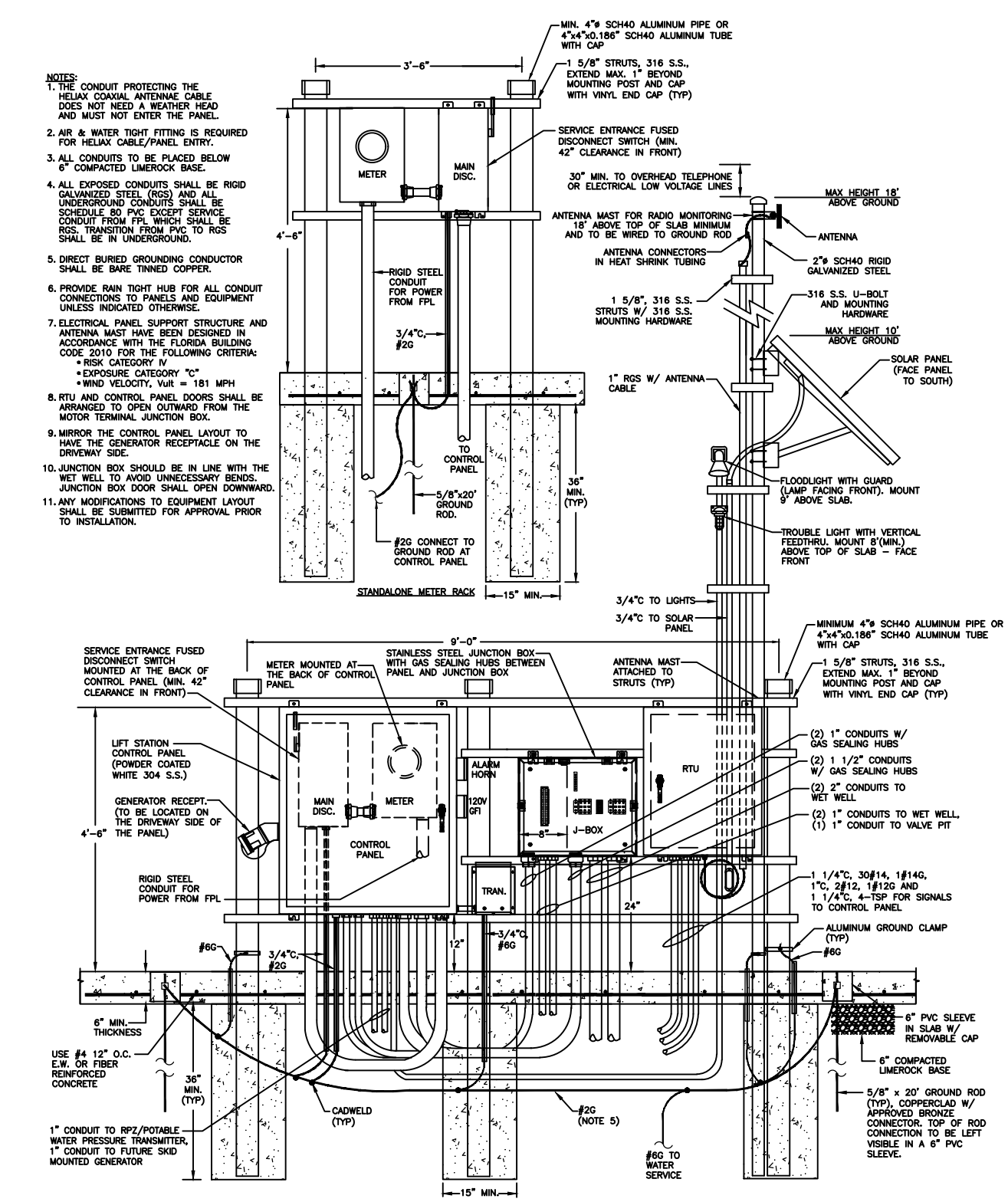
* 83S



- NOTES:
1. CONDUIT PROTECTING THE HELIUM CORDIAL ANTENNA CABLE DOES NOT NEED A WATER TIGHT FITTING AS IT DOES NOT ENTER THE PANEL.
 2. AIR & WATER TIGHT FITTING IS REQUIRED FOR HELIUM CABLE/ANTENNA ENTRY.
 3. ALL CONDUITS TO BE PLACED BELOW 6" COMPACTED UNDERROCK BASE.
 4. ALL EXPOSED CONDUITS SHALL BE ROOD GALVANIZED STEEL (RGS) AND ALL UNDERGROUND CONDUITS SHALL BE RGS SCHEDULE 40 EGG RIGID PVC (RIGID PVC) WITH 1/2" O.D. FOR 1" CONDUIT TO WET WELL. ALL UNDERGROUND CONDUITS SHALL BE IN UNDERGROUND.
 5. DIRECT BURIED GROUNDING CONDUCTOR SHALL BE SAME TRINEX COPPER.
 6. PROVIDE RAIN TIGHT HUB FOR ALL CONDUIT CONNECTIONS TO PANELS AND EQUIPMENT UNLESS INDICATED OTHERWISE.
 7. ELECTRICAL PANEL SUPPORT STRUCTURE AND ANTENNA MAST SHALL BE DESIGNED IN ACCORDANCE WITH THE FLORIDA BUILDING CODE 2010 FOR THE FOLLOWING CRITERIA:
 - WIND CATEGORY "4"
 - WIND VELOCITY, V_W = 181 MPH
 8. RTU AND CONTROL PANEL DOORS SHALL BE REMOVED TO OPEN OUTWARD FROM THE MOTOR TERMINAL JUNCTION BOX.
 9. MIRROR THE CONTROL PANEL LAYOUT TO HAVE THE GENERATOR RECEPTACLE ON THE DRIVEWAY SIDE.
 10. JUNCTION BOX SHOULD BE IN LINE WITH THE MET WELL TO WELLS UNLESS OTHERWISE NOTED. JUNCTION BOX DOOR SHALL OPEN DOWNWARD.
 11. ANY MODIFICATIONS TO EQUIPMENT LAYOUT SHALL BE SUBMITTED FOR APPROVAL PRIOR TO INSTALLATION.
 12. JUNCTION BOX SHOULD BE IN LINE WITH THE MET WELL TO WELLS UNLESS OTHERWISE NOTED. JUNCTION BOX DOOR SHALL OPEN DOWNWARD.
 13. ANY MODIFICATIONS TO EQUIPMENT LAYOUT SHALL BE SUBMITTED FOR APPROVAL PRIOR TO INSTALLATION.

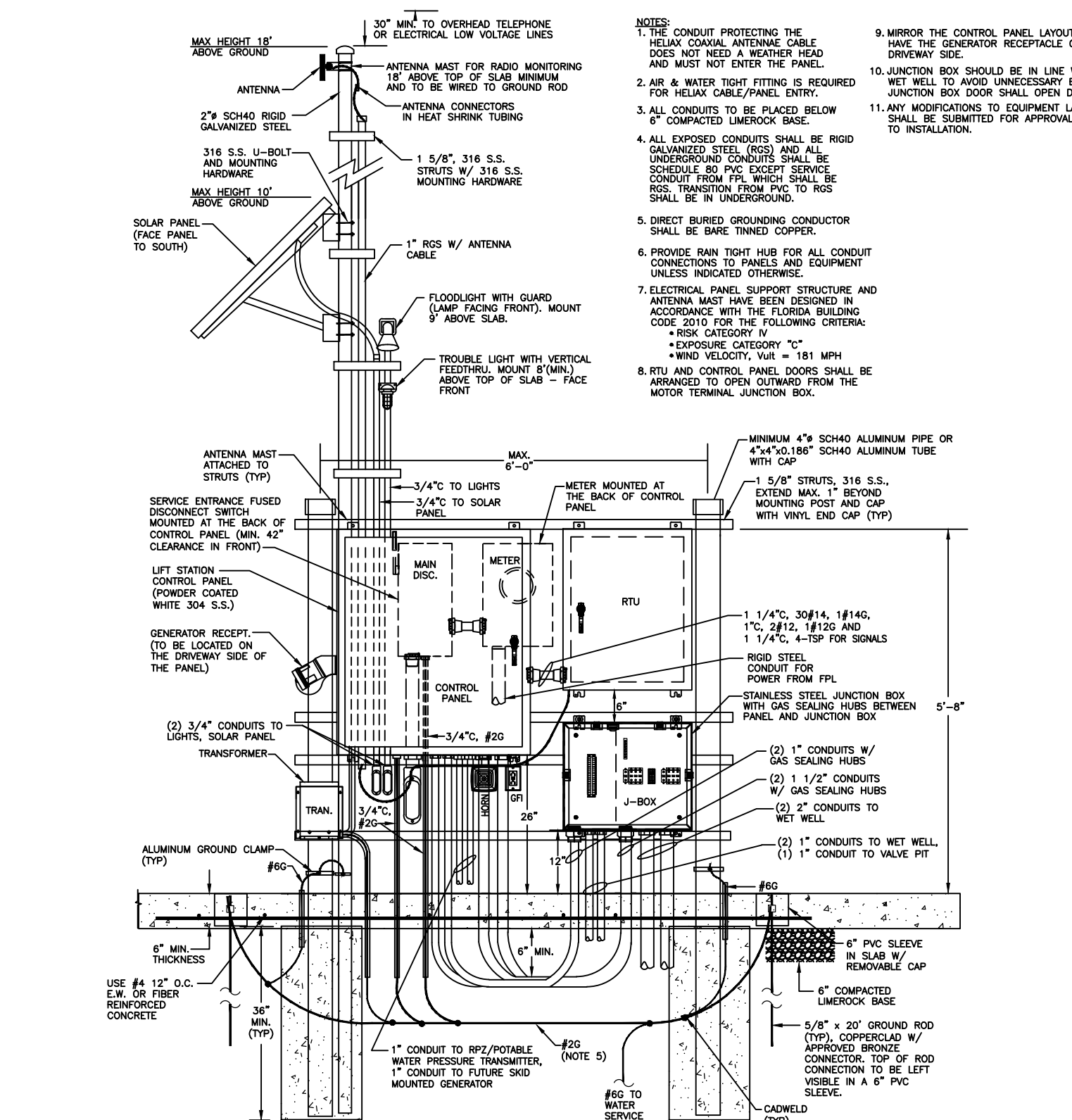
LIFT STATION EQUIPMENT LAYOUT #1 WITH LOW PROFILE CONTROL PANEL

* 84S



LIFT STATION EQUIPMENT LAYOUT #2 WITH LOW PROFILE CONTROL PANEL

* 85S



LIFT STATION EQUIPMENT LAYOUT #3 WITH LOW PROFILE CONTROL PANEL

* 86S

THIS SPACE INTENTIONALLY LEFT BLANK

THIS SPACE INTENTIONALLY LEFT BLANK

THIS SPACE INTENTIONALLY LEFT BLANK

LIFT STATION ELECTRICAL STANDARD DETAILS 3 OF 3

CONSULTANT:

IT'S THE LAW!
CALL 48 HOURS BEFORE YOU DIG
1-800-432-4770
SUNSHINE STATE ONE CALL OF FLORIDA, INC.
UTILITIES NOTIFICATION CENTER

DESIGNED BY: WUD
 DRAWN BY: M. BUCKNER Palm Beach County
 CHECKED BY: J. LAMMERT Water Utilities Department
 APPROVED BY: WUD P.O. Box 16097
 West Palm Beach, FL 33416-6097

SEAL
 SHEET NUMBER: 0 OF 0
 DATE: DEC 2021
 REVISION / REMARKS: GENERAL REVISION
 J.L.
 J.L.
 LS ELEC. E-3
 Mar 17, 2023