

CERP Loxahatchee River Watershed Restoration Project Update

C-18 Reservoir Status (Part of L-8 to NWFLR Connection)

C-101W and C-18 Reservoir Status (Part of L-8 to NWFLR Connection)

Currently the only route to provide the Northwest Fork of the Loxahatchee River (NWFLR) is through the City of West Palm Beach's (CWPB's) Grassy Waters Preserve (GWP). This route has limited capacity (e.g. < 30 cfs) and requires relatively high stages in GWP (see following figures)

Palm Beach County Continues to explore providing a connection from the L-8 Basin to the NWFLR. This would make it possible for water to be delivered from the C-51 Reservoir Phase 2.

Authorized Plan: Alt 5R

Flow Way 3

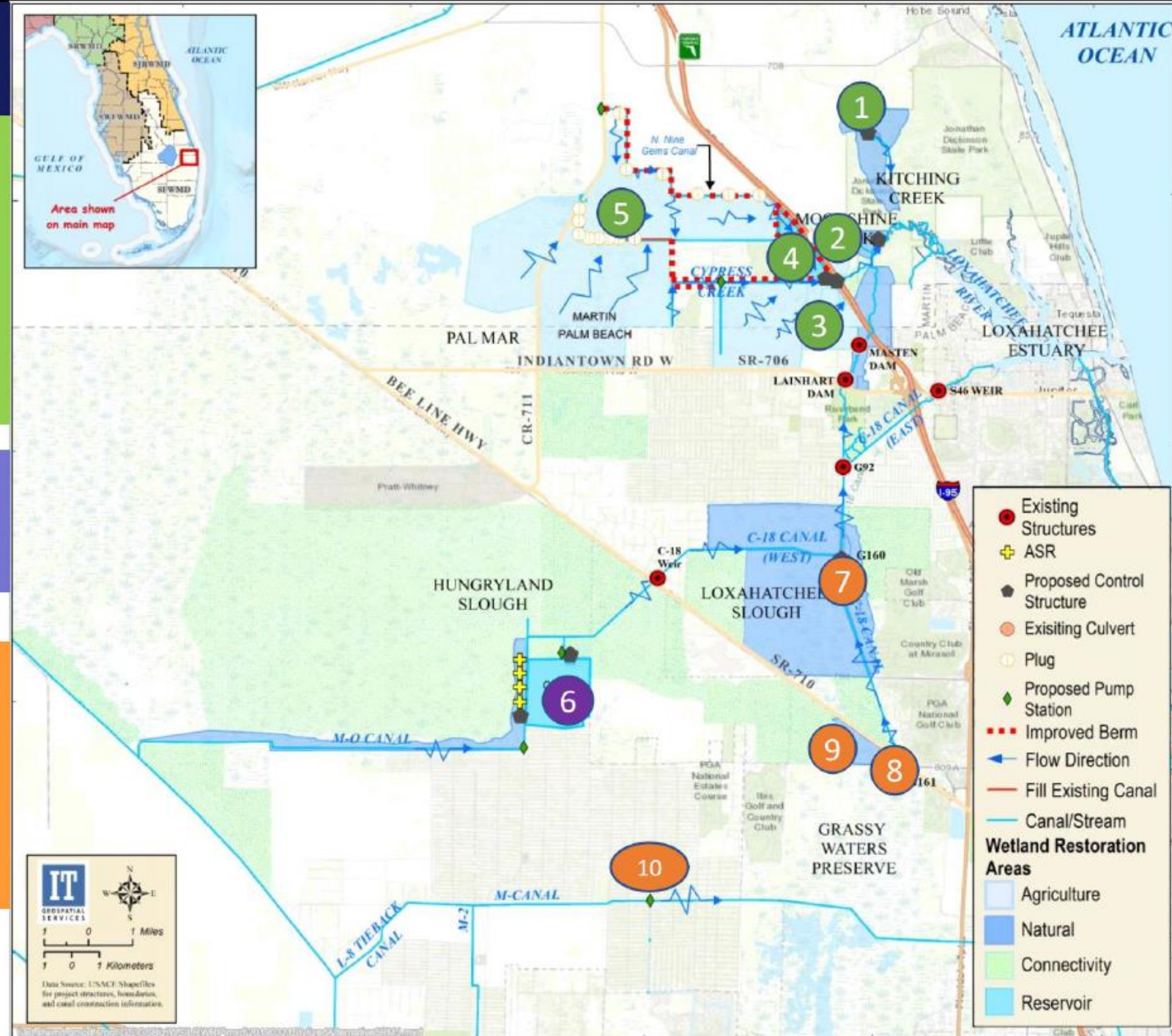
- 1 - Kitching Creek
- 2 - Moonshine Creek/Gulfstream East
- 3 - Cypress Creek Canal
- 4 - Gulfstream West
- 5 - Palmar East

Flow Way 2

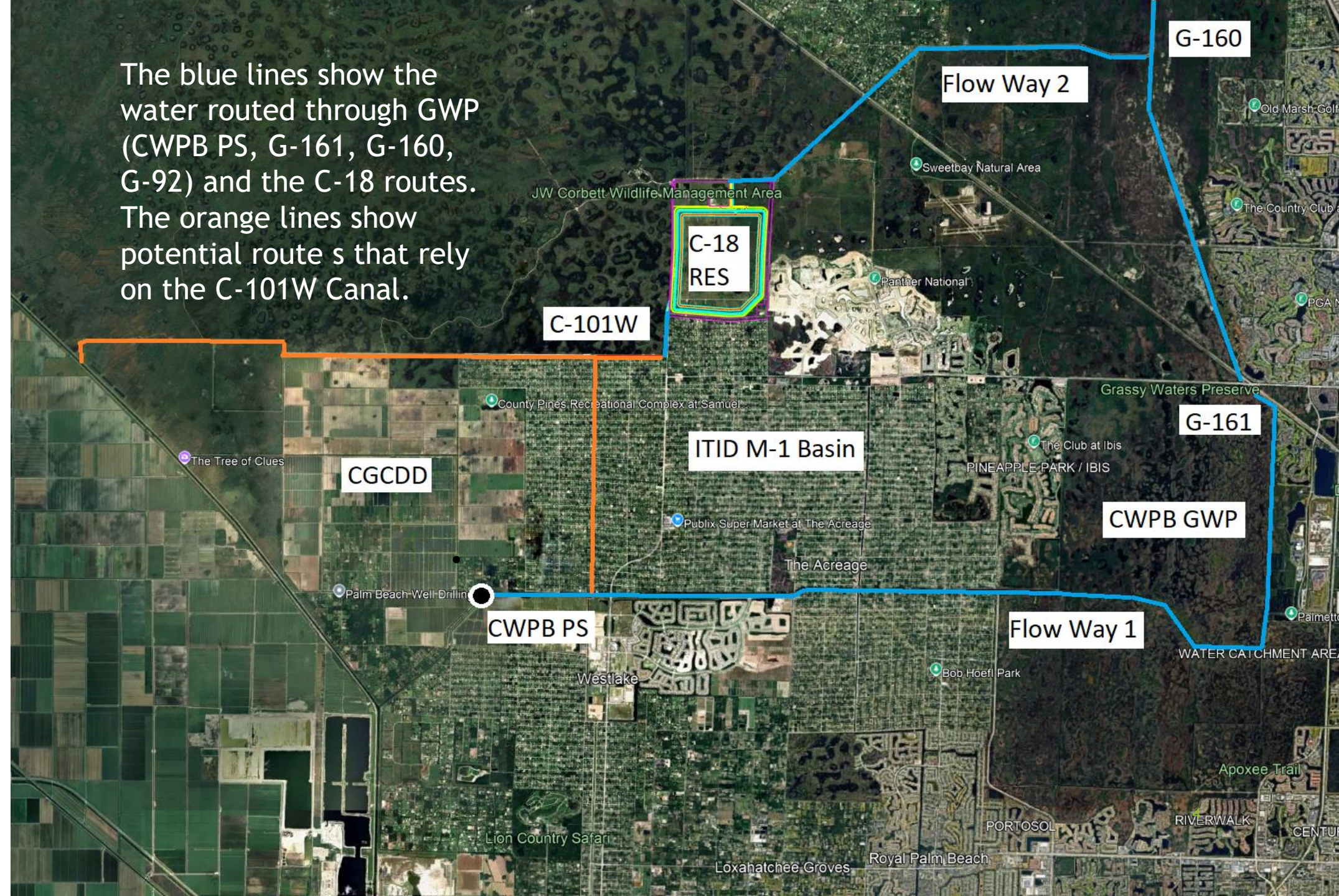
- 6 - C-18W Impoundment (9,500 ac/ft & 4 ASR wells)

Flow Way 1

- 7 - G-160 Structure
- 8 - G-161 Structure
- 9 - Grassy Waters Triangle
- 10 - M-1 Pump Station



The blue lines show the water routed through GWP (CWPB PS, G-161, G-160, G-92) and the C-18 routes. The orange lines show potential routes that rely on the C-101W Canal.



SFWMD January Update Details

Flowway 2 - C-18W Impoundment. Preliminary design is ongoing. The District's consultant, Arcadis, is working on incorporating design changes identified during the September 2024 charrette....Preliminary design is expected to continue through mid-2025, at which point the C101W component will be separated from the larger project. Construction of C101W/L101W could begin in early 2027, although the potential need to relocate FPL transmission lines within the C101W footprint is a schedule risk....Design work for the main impoundment is expected to continue through 2027, with construction starting in 2028