

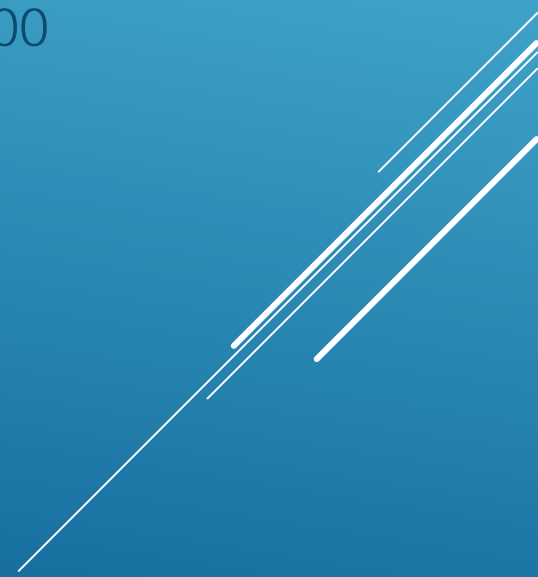


# PALM BEACH COUNTY ERM

Water Quality Monitoring Program

- ▶ The continuation of the Palm Beach County Health Department's Water Quality Monitoring Program initiated in 1975.
- ▶ The program was transferred to the newly created PBC Environment Resources Management Department in 1989.
- ▶ The program was incorporated as the NPDES MS4 Monitoring Program in 1998.
- ▶ PBC ERM served as a contractor to SFWMD 2000 to 2008 to conduct the WQM water quality monitoring.

## PROGRAM HISTORY



- ▶ The monitoring program added the Chain of Lakes monitoring in 2006 to 2016.
- ▶ The monitoring program expanded in 2007 to include a cooperative monitoring program with the SFWMD for the Lake Worth Lagoon. The Lake Worth Lagoon monitoring program is currently at 14 sites.
- ▶ Adding additional monitoring sites as needed. 4 sites have been added since 2012.

## PROGRAM HISTORY



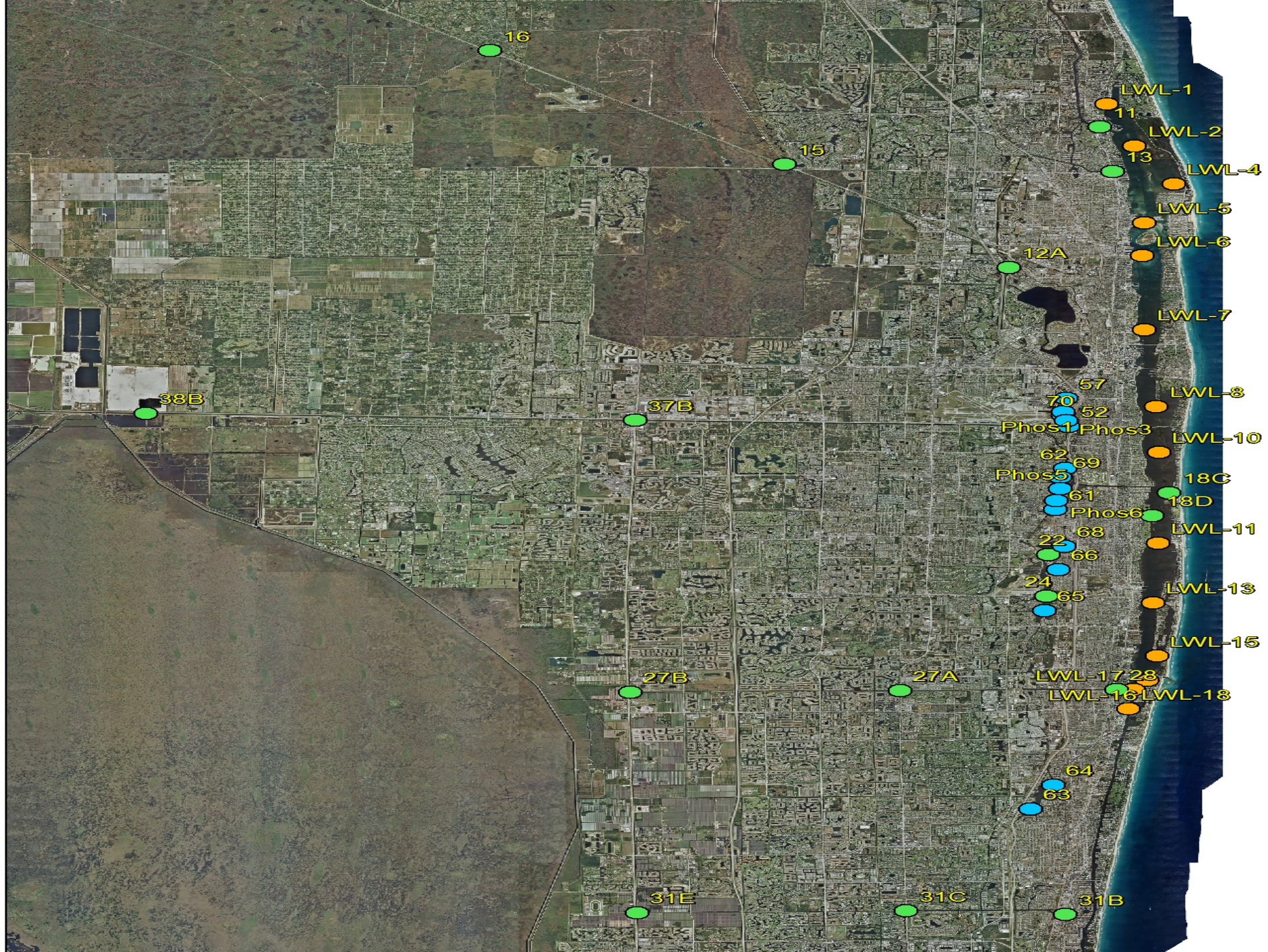
- ▶ Conduct representative monitoring
- ▶ Ensure thorough data validation
- ▶ Transfer water quality data into STORET/WIN and into the Impaired Waters Rule database (IWR\_Runs) for assessment of impairment

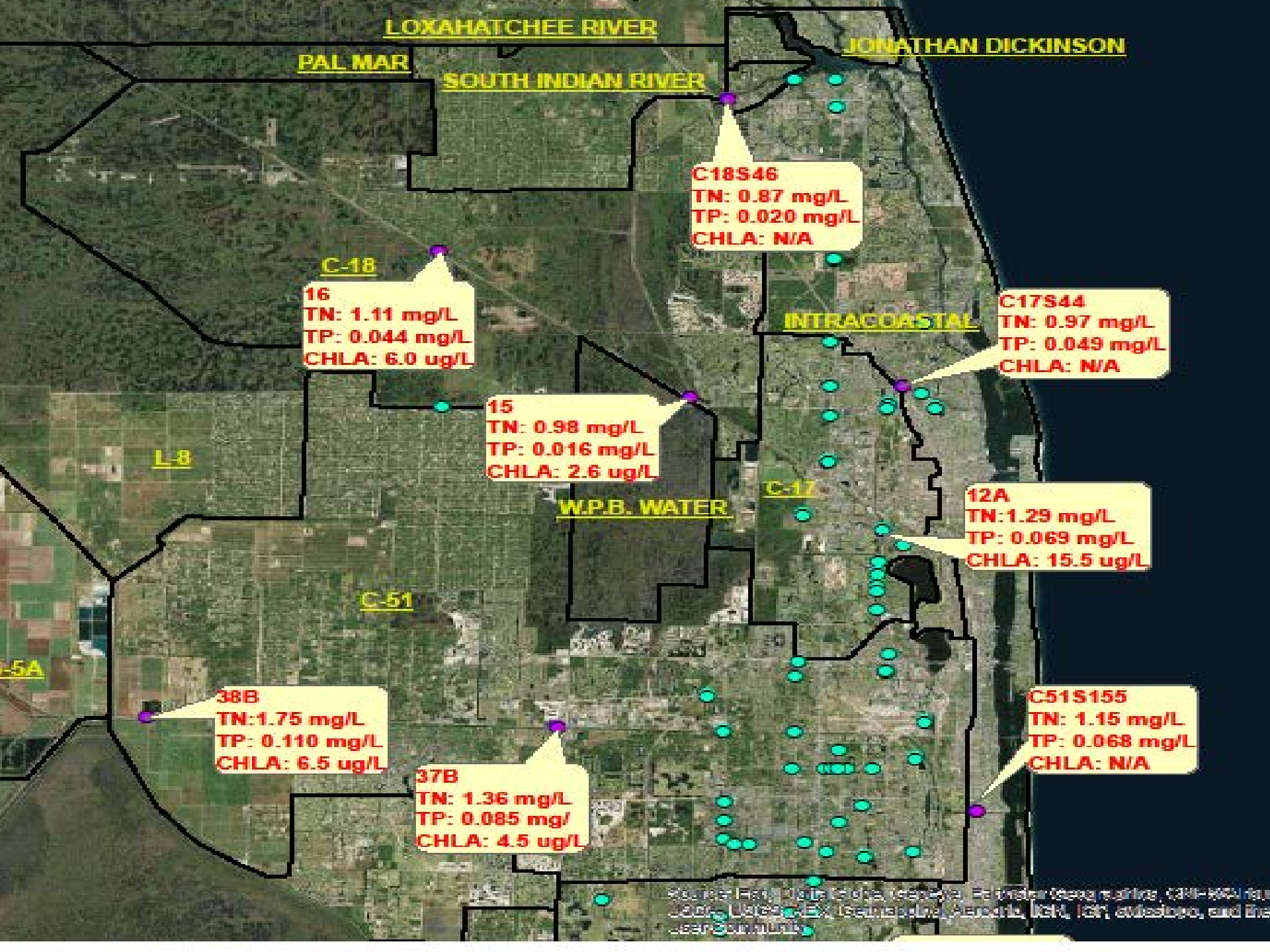
## PROGRAM GOALS

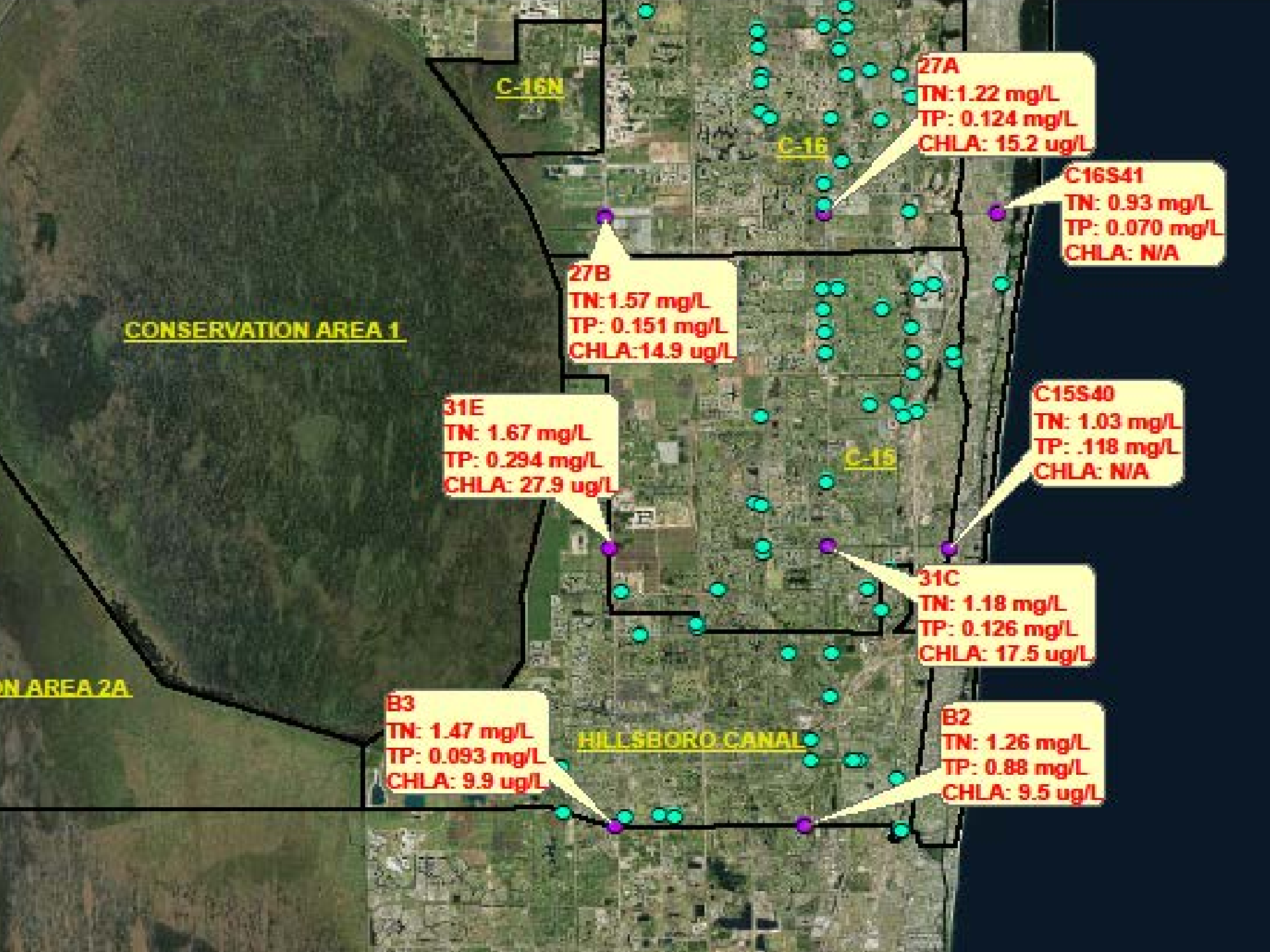
- ▶ In Central and Southern PBC the C-51, Boynton and L-38/C-15 Canals exhibit a nutrient gradient west to east.
- ▶ The Chain of Lakes water quality data indicate no statistically significant trends from 2006 to 2016.
- ▶ The Lake Worth Lagoon Central Segment is impaired for nutrients.

WHAT HAVE WE LEARNED.









C-16N

C-16

27A  
TN: 1.22 mg/L  
TP: 0.124 mg/L  
CHLA: 15.2 ug/L

C16S41  
TN: 0.93 mg/L  
TP: 0.070 mg/L  
CHLA: N/A

27B  
TN: 1.57 mg/L  
TP: 0.151 mg/L  
CHLA: 14.9 ug/L

CONSERVATION AREA 1

31E  
TN: 1.67 mg/L  
TP: 0.294 mg/L  
CHLA: 27.9 ug/L

C15S40  
TN: 1.03 mg/L  
TP: .118 mg/L  
CHLA: N/A

C-15

31C  
TN: 1.18 mg/L  
TP: 0.126 mg/L  
CHLA: 17.5 ug/L

IN AREA 2A

B3  
TN: 1.47 mg/L  
TP: 0.093 mg/L  
CHLA: 9.9 ug/L

HILLBORO CANAL

B2  
TN: 1.26 mg/L  
TP: 0.88 mg/L  
CHLA: 9.5 ug/L



QUESTIONS?

