



# Lake Worth Lagoon Living Shorelines



By: Eric Anderson, Environmental Analyst  
Palm Beach County Dept. of Environmental Resources Management

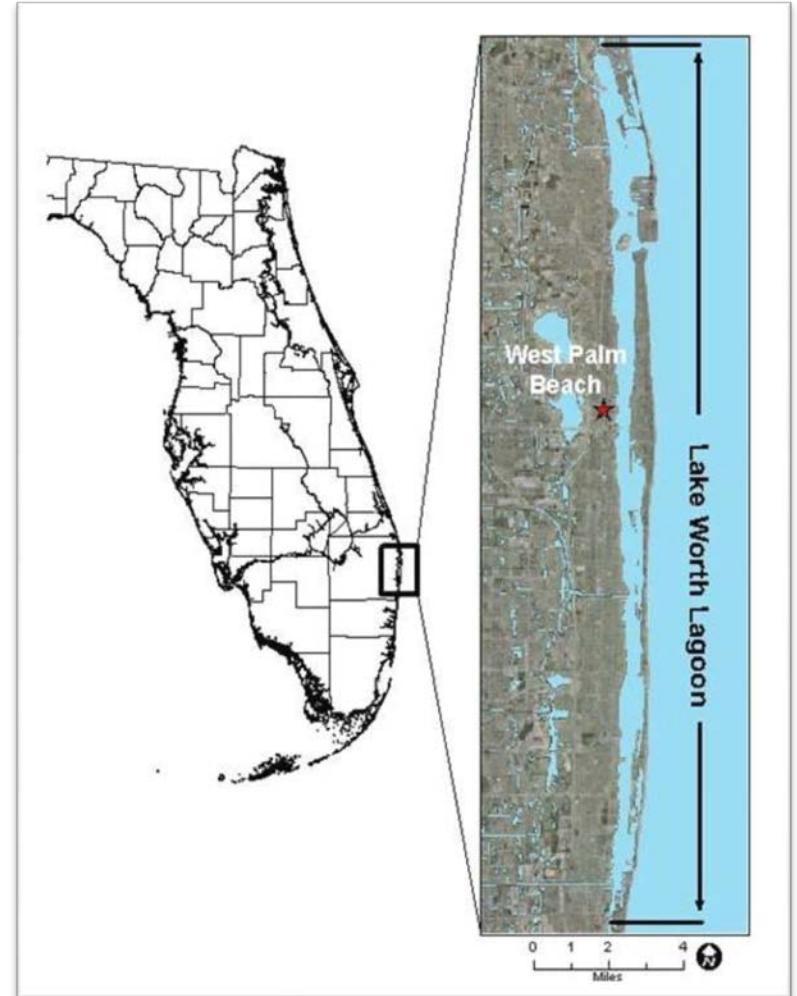
Photo Credit John Marshall



# Lake Worth Lagoon



- Located between Village of North Palm Beach and the Town of Ocean Ridge
- 20 mi long, 1/2 mi wide, 6-10' deep
- Resources include:
  - 1,689 acres of seagrass
  - 283 acres of mangroves
  - 5 acres of oysters





# Living Shorelines

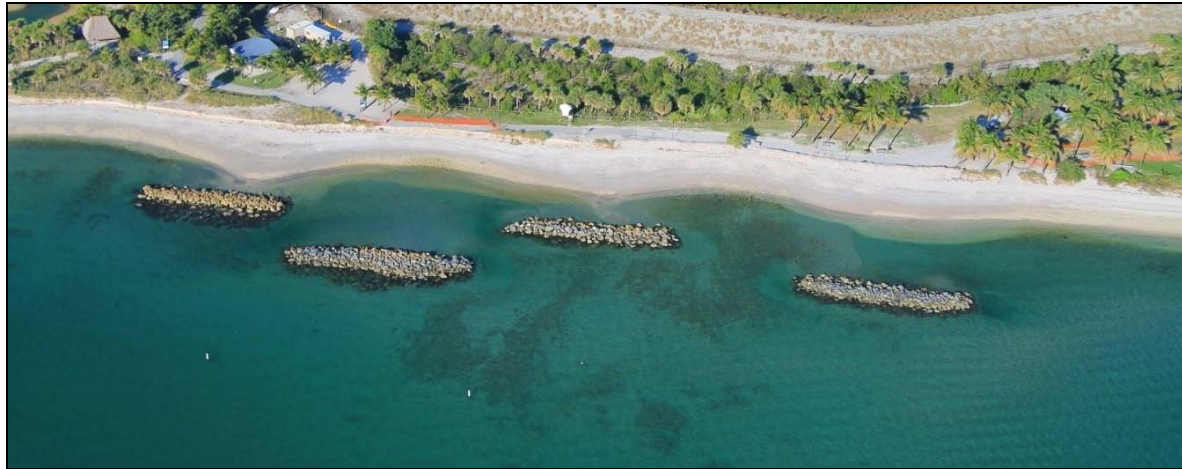


- create habitat for birds, oysters & fish
- protect seawalls against wave energy & storm surge,
- protect natural shorelines from erosion.
- provide a more natural, aesthetic view to the waterfront





# Breakwaters



# Oyster Reefs



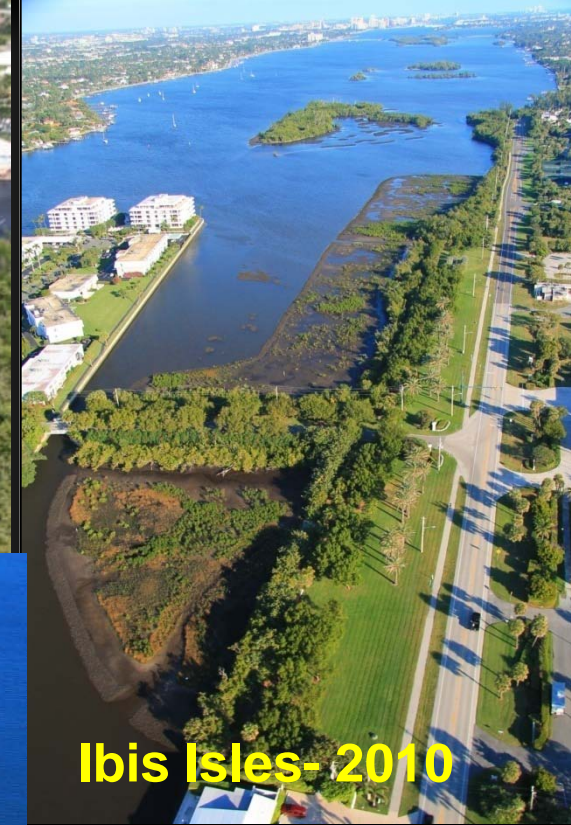
# Highland Beach Shoreline Enhancement





# Breakwaters & Oyster Reefs

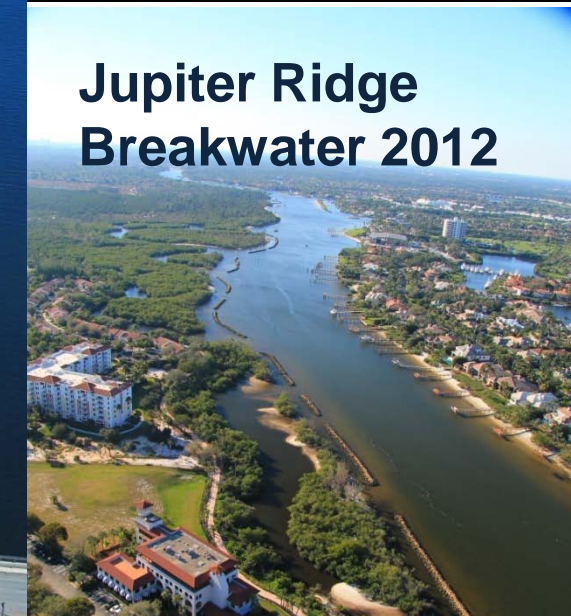
**Boynton Beach Breakwaters - 2009**



**Ibis Isles- 2010**



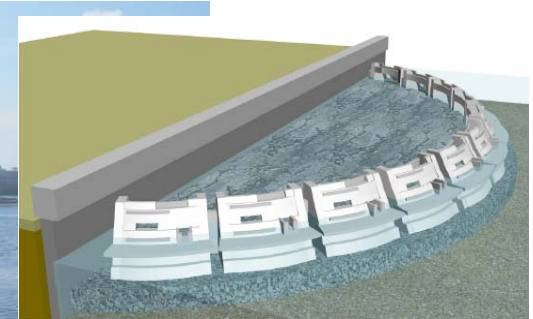
**South Cove – 2012**



**Jupiter Ridge  
Breakwater 2012**

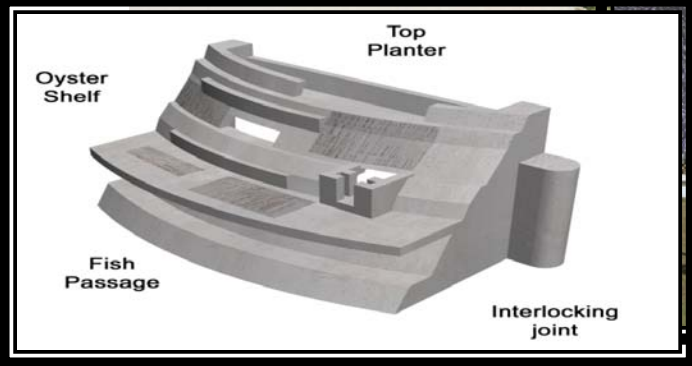


# Intertidal Wetland Planters





# Bryant Park Living Shoreline



National Endowment for the Arts  
art.gov



Michael Singer Inc.







# Intertidal Islands



**Ibis Isles- 2010**



**Bryant Park-2015**



# Grassy Flats Restoration Project



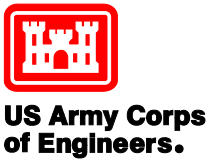
Oystercatcher Nest



Least terns



Oystercatcher and Fledging

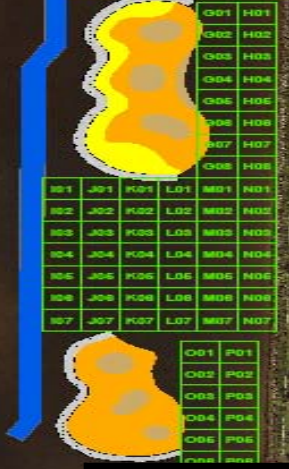




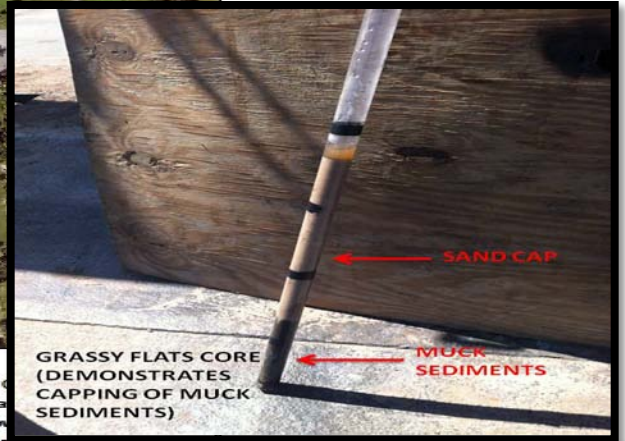
# Grassy Flats Restoration Project



|     |     |     |     |     |     |
|-----|-----|-----|-----|-----|-----|
| A01 | B01 | C01 | D01 | E01 | F01 |
| A02 | B02 | C02 | D02 | E02 | F02 |
| A03 | B03 | C03 | D03 | E03 | F03 |
| A04 | B04 | C04 | D04 | E04 | F04 |
| A05 | B05 | C05 | D05 | E05 | F05 |
| A06 | B06 | C06 | D06 | E06 | F06 |
| A07 | B07 | C07 | D07 | E07 | F07 |
| A08 | B08 | C08 | D08 | E08 | F08 |
| A09 | B09 | C09 | D09 | E09 | F09 |
| A10 | B10 | C10 | D10 | E10 | F10 |
| A11 | B11 | C11 | D11 | E11 | F11 |
| A12 | B12 | C12 | D12 | E12 | F12 |
| A13 | B13 | C13 | D13 | E13 | F13 |
| A14 | B14 | C14 | D14 | E14 | F14 |
| A15 | B15 | C15 | D15 | E15 | F15 |
| A16 | B16 | C16 | D16 | E16 | F16 |
| A17 | B17 | C17 | D17 | E17 | F17 |
| A18 | B18 | C18 | D18 | E18 | F18 |



**Legend**  
 Project  
 Cordgrass  
 Mangrove





# South Cove Natural Area

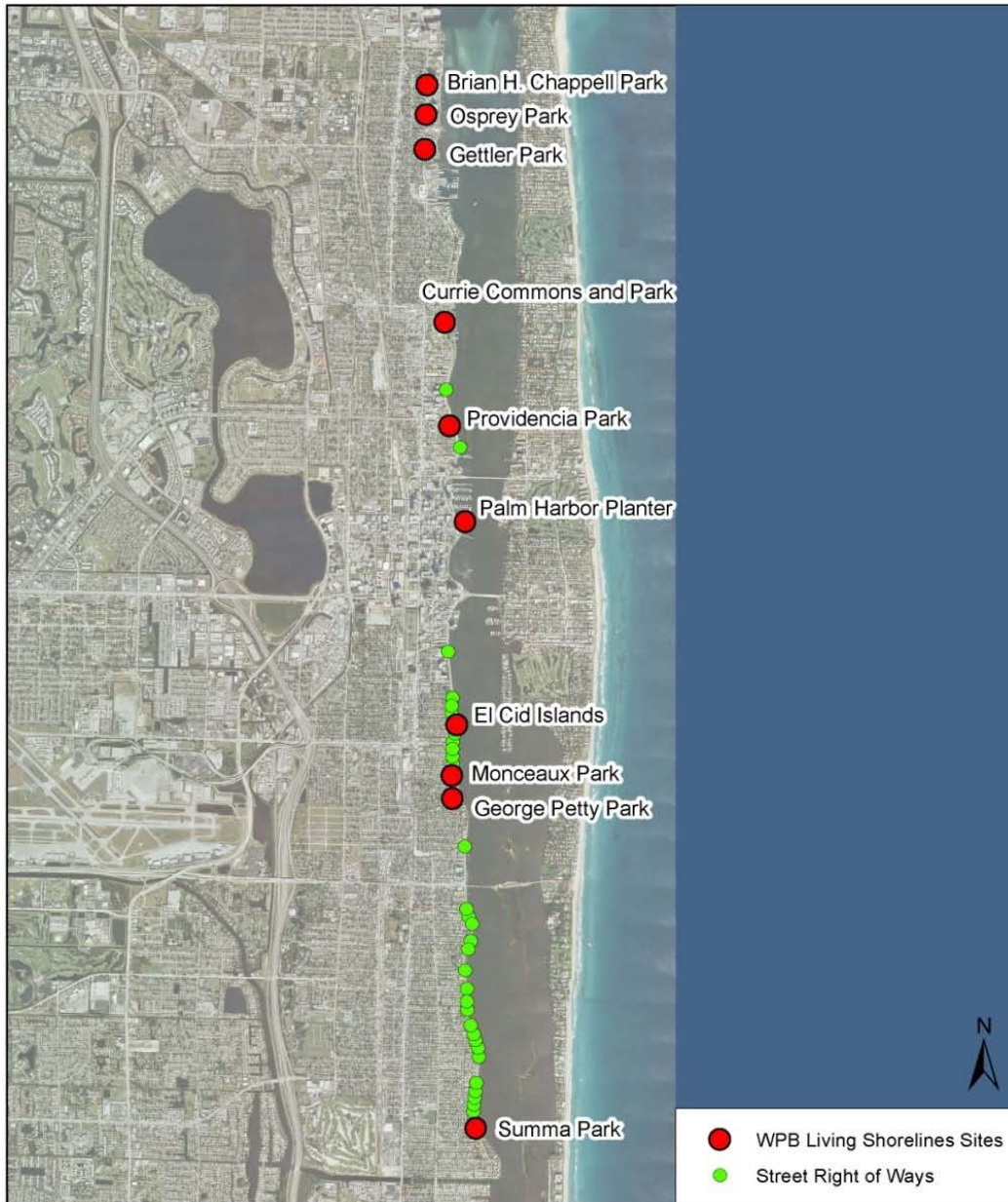


- 6-acre dredge hole filling project
  - 2 acres of mangrove/salt marsh
  - 3.5 acres of seagrass
  - 1 acre of oyster/artificial reef
- Completed 2012





# West Palm Beach Living Shoreline Concepts

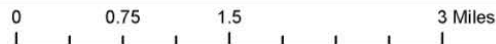


- 10 parks
- 31 end of street right-of-ways
- 2 miles of City shoreline
- 6 acres of intertidal habitat



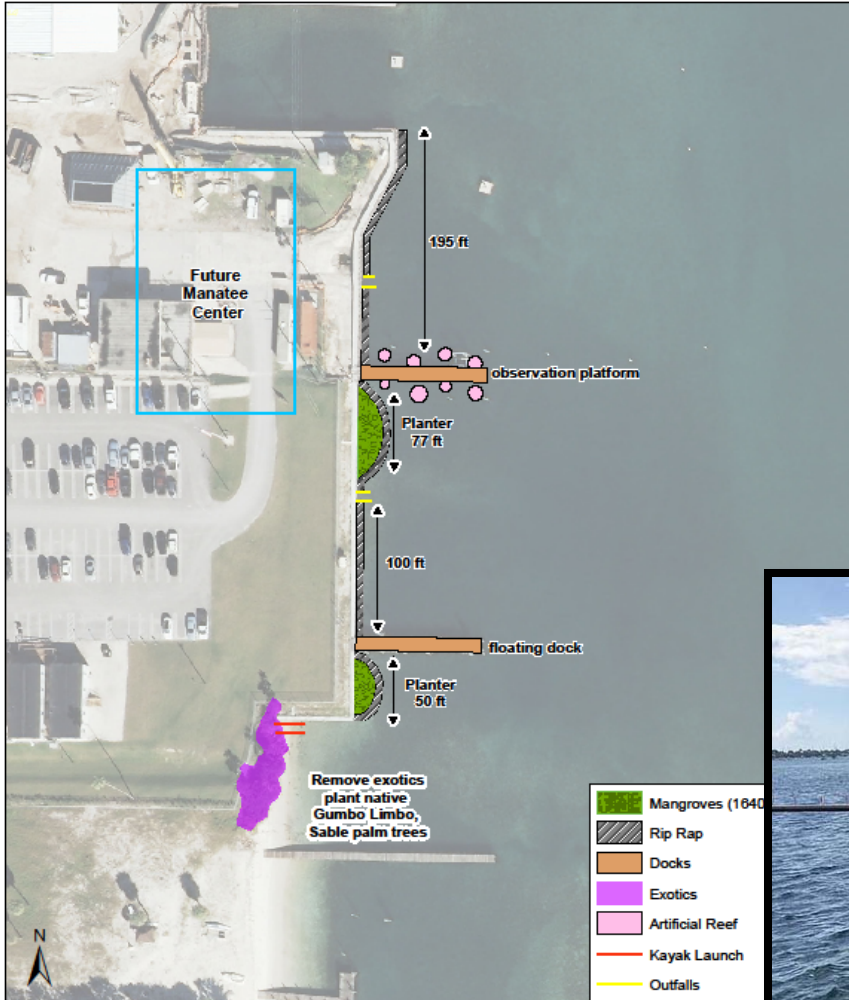
Palm Beach County Department of Environmental Resources Management  
 2300 North Jog Road, 4th Floor  
 West Palm Beach, Florida 33411-2741  
 (561) 233-2400

### City of West Palm Beach Parks Living Shorelines Potential Projects





# FPL – Manatee Center



Palm Beach County Department of  
Environmental Resources Management  
2300 North Jog Road, 4th Floor  
West Palm Beach, Florida 33411-2741  
(561) 233-2400

Florida Power and Light  
Living Shorelines Potential Proj

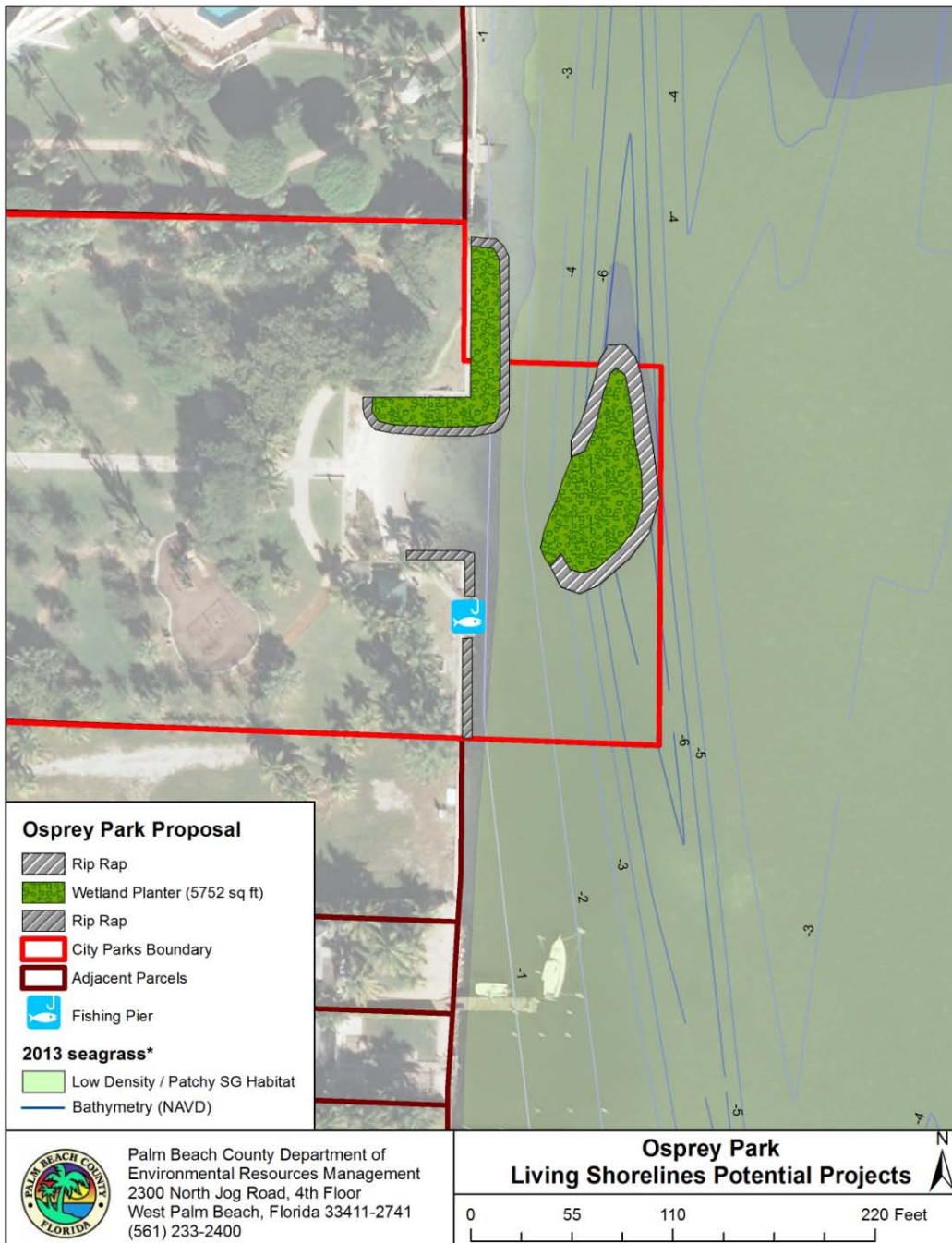
0 65 130

# Osprey Park

- Shoreline Length: 400'
- Sandy beach, rip-rap;
- New seawall

## Potential Components:

- 120' x 55' Intertidal Breakwater Island to protect the shoreline
- 160' of shoreline planter
- 130' of rock rip-rap



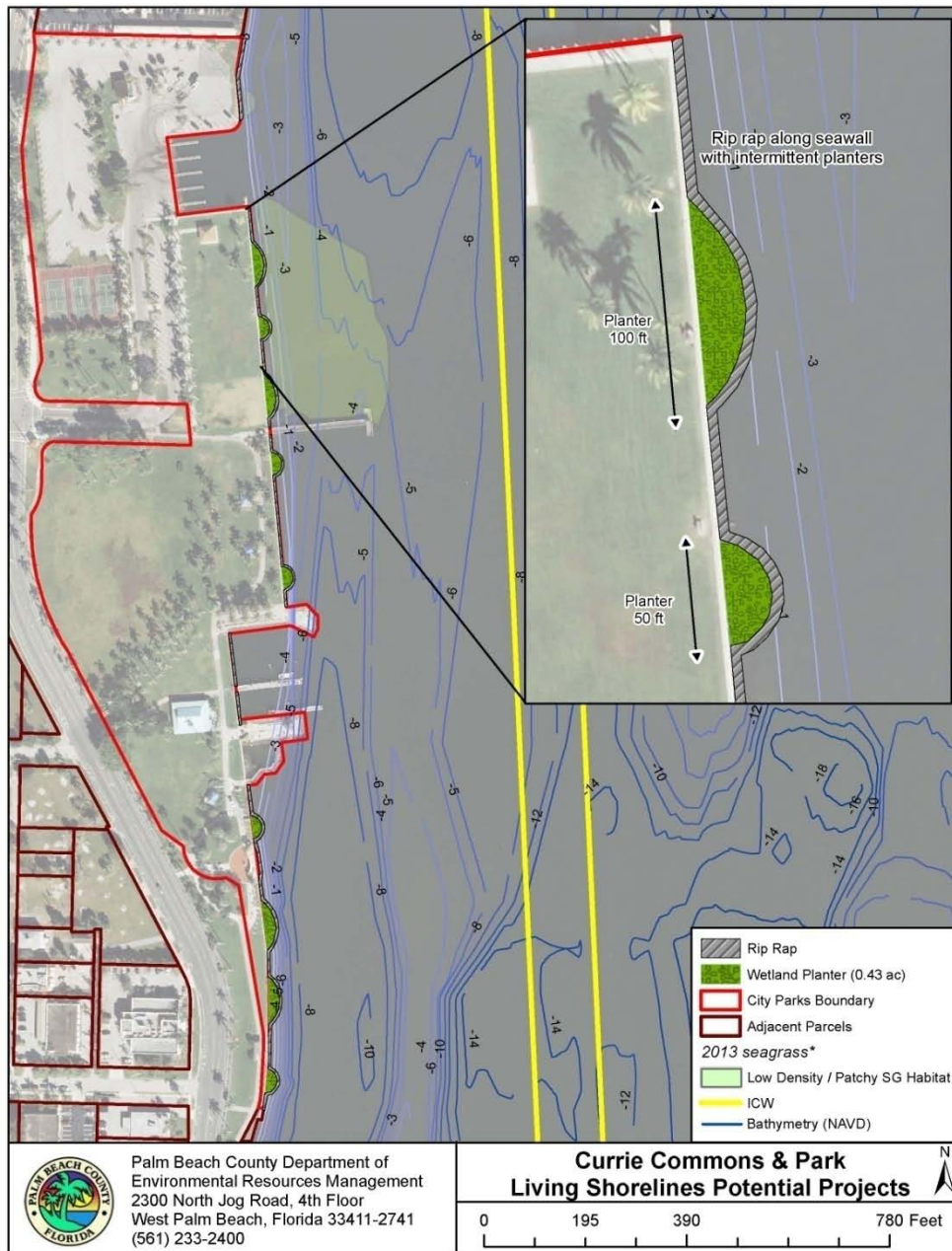


# Currie Park

- Length: 2,000'
- Seawall; urban rip-rap off seawall,

## Project Components:

- 1,200' of rip-rap
- 9 planters = 880' of shoreline
- Planters vary between 50' and 100' in length and 25' wide.
- Design gaps for views



Thank You

