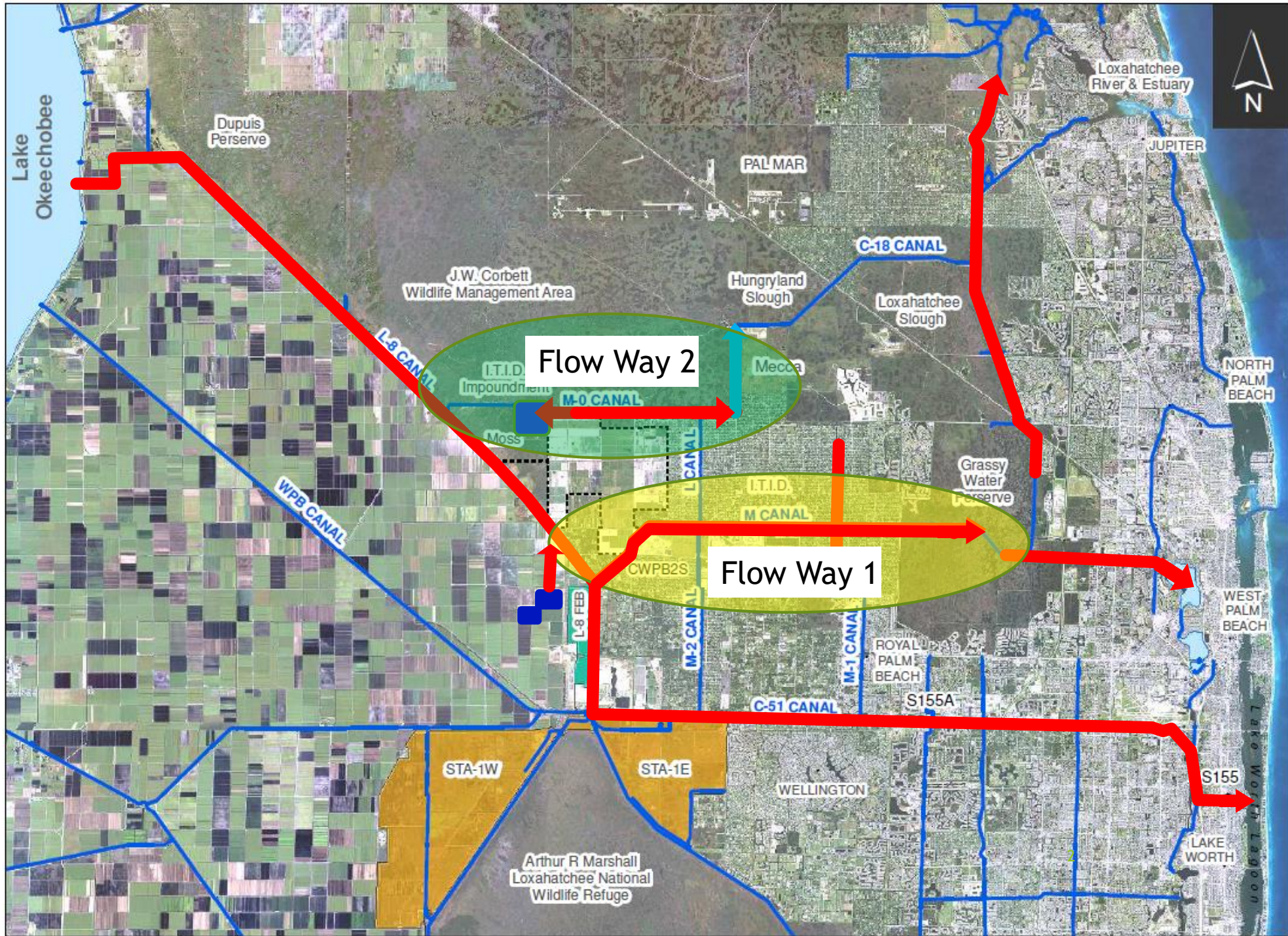
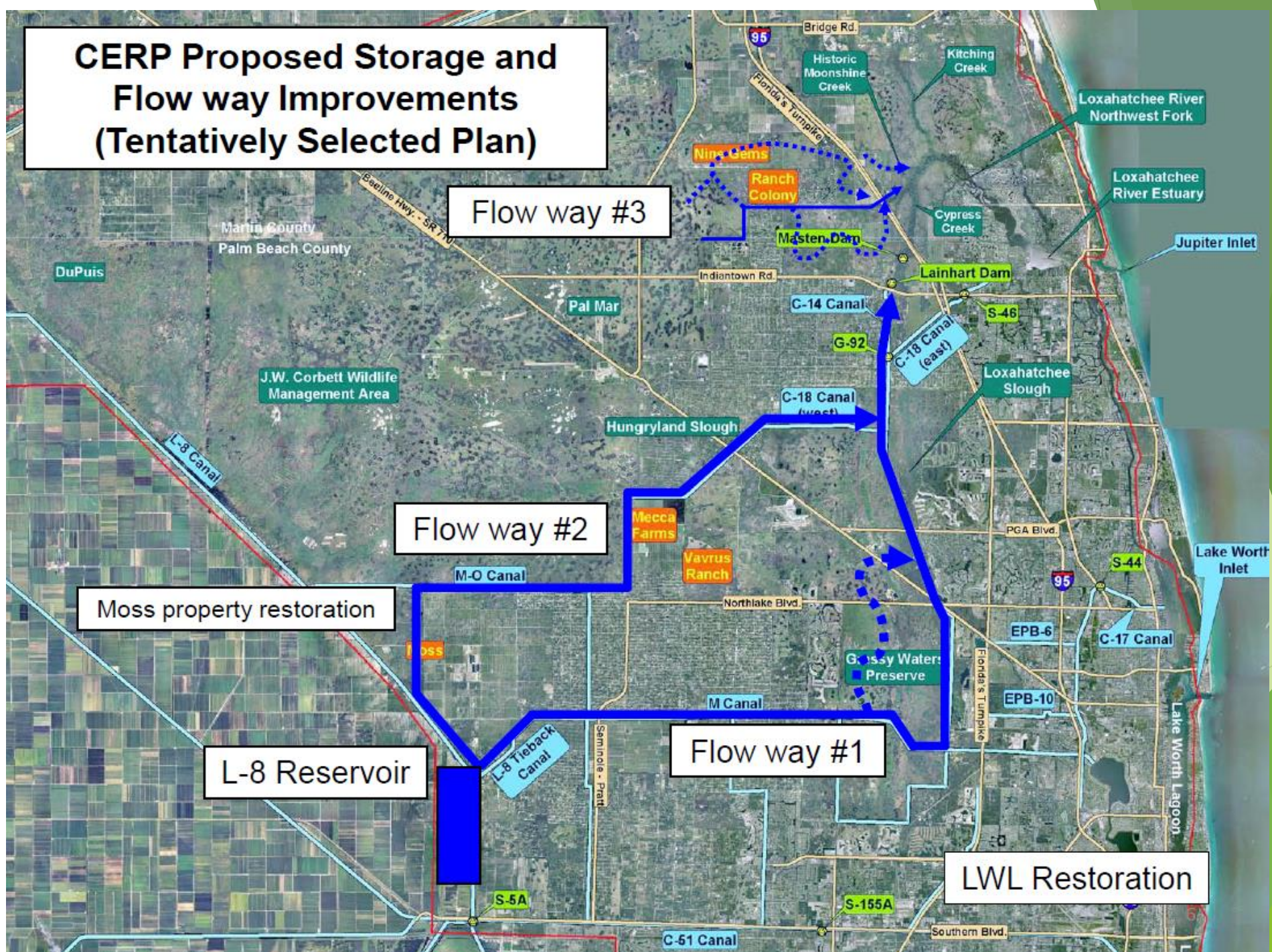


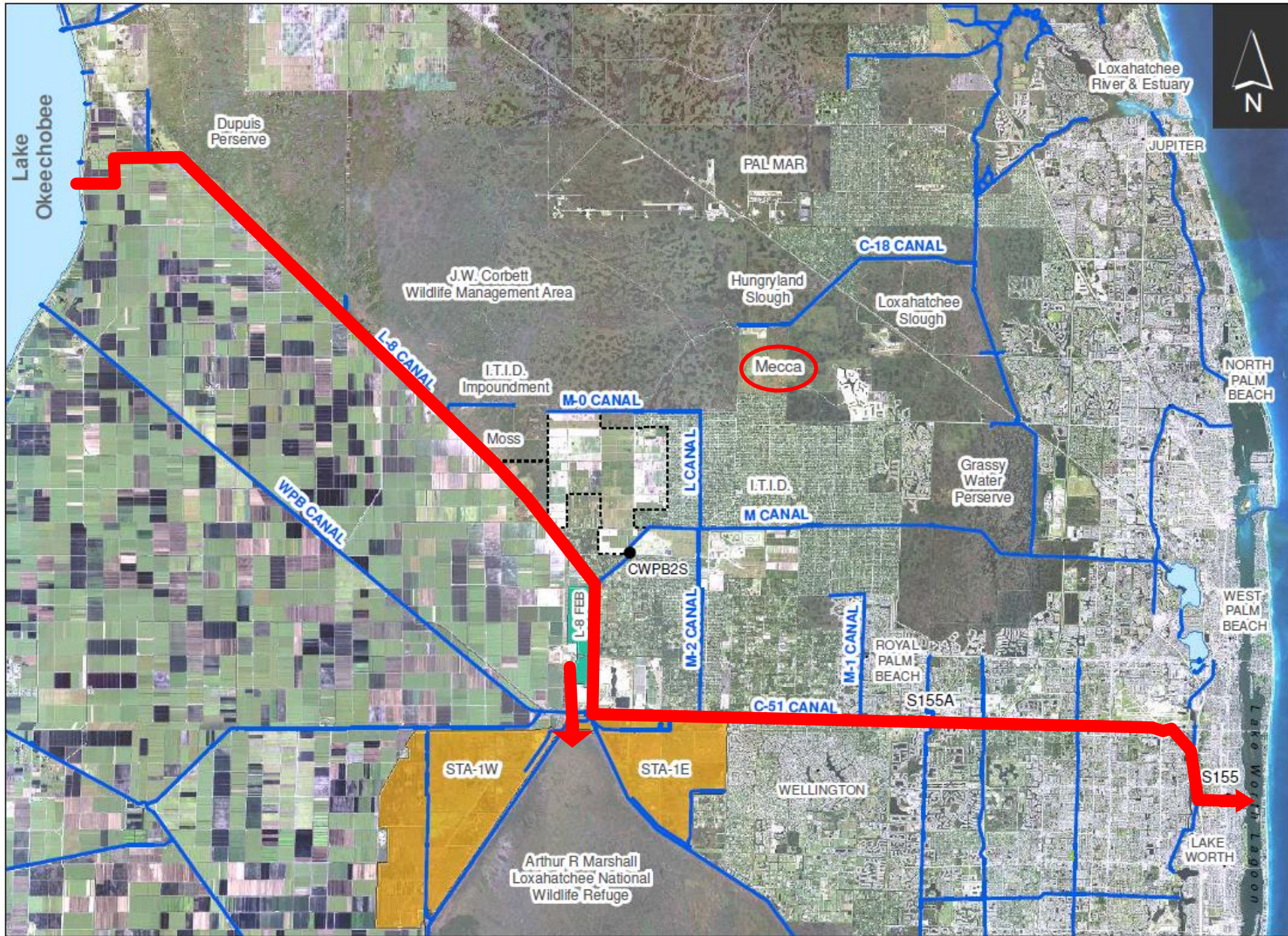
Indian Trails Grove Water Resource Project





CERP Proposed Storage and Flow way Improvements (Tentatively Selected Plan)





Authorized Plan: Alt 5R

Flow Way 3

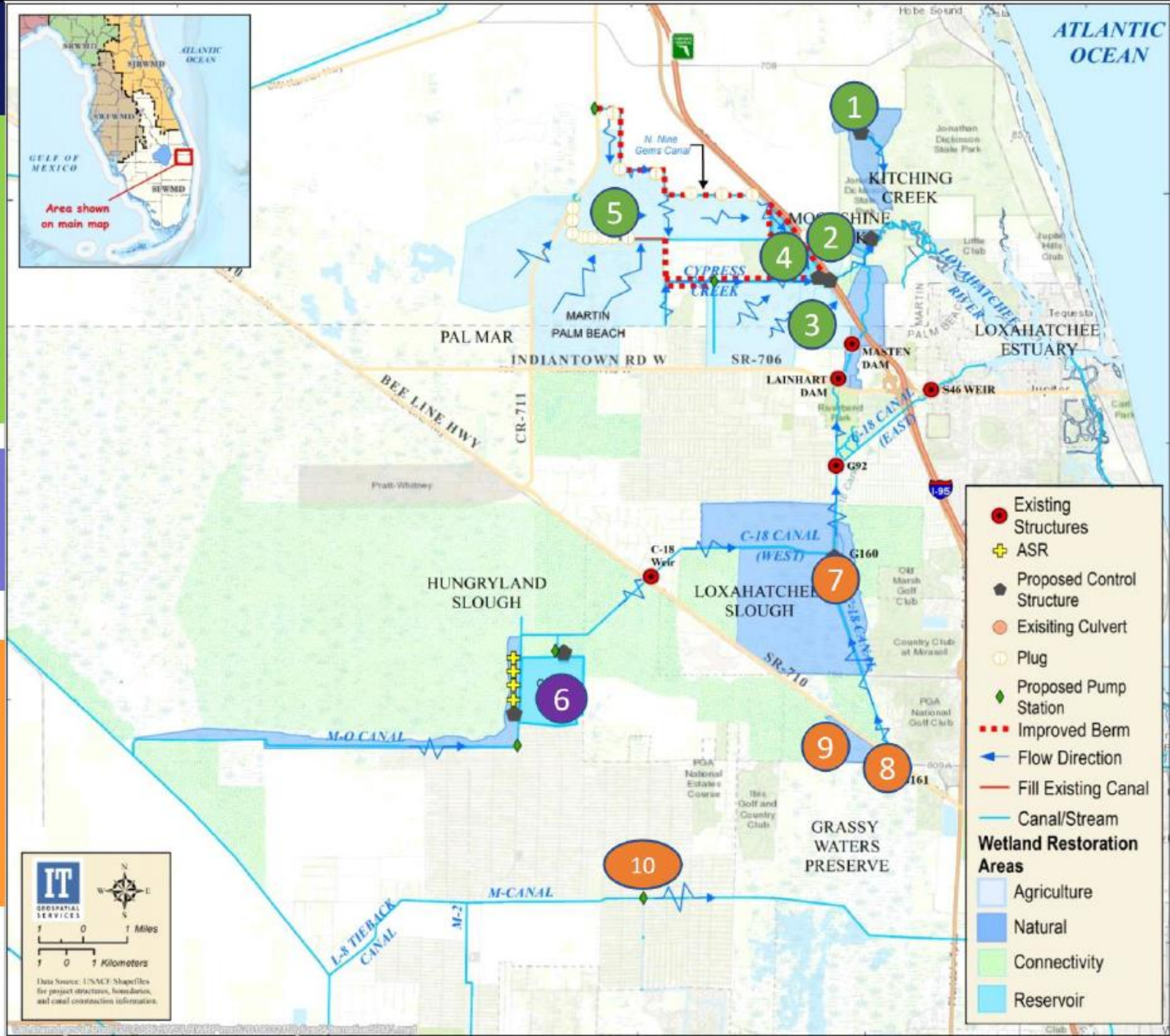
- 1 - Kitching Creek
- 2 - Moonshine Creek/Gulfstream East
- 3 - Cypress Creek Canal
- 4 - Gulfstream West
- 5 - Palmar East

Flow Way 2

- 6 - C-18W Impoundment (9,500 ac/ft & 4 ASR wells)

Flow Way 1

- 7 - G-160 Structure
- 8 - G-161 Structure
- 9 - Grassy Waters Triangle
- 10 - M-1 Pump Station





DAVE KERNER
County Mayor
County Commissioner, District 3

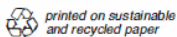


Palm Beach County
Board of County Commissioners
Governmental Center
301 North Olive Avenue, 12th Floor
West Palm Beach, FL 33401
Telephone: (561) 355-2203
Facsimile: (561) 355-6344

dkerner@pbcgov.org

www.pbcgov.com

"An Equal Opportunity
Affirmative Action Employer"



December 5, 2019

Drew Bartlett
Executive Director
South Florida Water Management District
3301 Gun Club Road
West Palm Beach, FL 33406

Dear Mr. Bartlett,

**Subject: Loxahatchee River Watershed Restoration Project
Letter of Support and Commitment to Future
Collaboration on Alternative Water Resources
Solutions**

Palm Beach County (County) supports efforts by the South Florida Water Management District (SFWMD) and the U.S. Army Corps of Engineers (USACE) to restore the Loxahatchee River watershed. The County also recommends that the SFWMD Governing Board communicate their support of the Loxahatchee River Watershed Restoration Project (Project) to USACE to enable authorization by Congress in 2020.

The County has been a leader in restoration efforts in the Loxahatchee River watershed, aggressively acquiring almost 28,000 acres of land and restoring wetlands for the benefit of the ecosystem. County staff has also been engaged in every iteration of Loxahatchee River restoration, including when it was identified as the North Palm Beach County Project.

As you know, there is a lack of stakeholder support for a single element of the Project, the proposed above-ground water storage reservoir on the Mecca site. County and stakeholder concerns with the Mecca reservoir include the 20-foot embankment heights and perceived flood risks and public safety issues, high costs and its incompatibility with adjacent lands, including existing and proposed natural areas. In July 2019, the County, in an effort to address County and stakeholder concerns, initiated a feasibility study to optimize and/or refine the Project alternatives previously evaluated by USACE.

The County believes that there are other more cost-effective solutions that would provide significant benefits to the Loxahatchee River watershed, increase flood control and water supply benefits, and improve conditions in the Lake Worth Lagoon, all of which would garner broad stakeholder support.

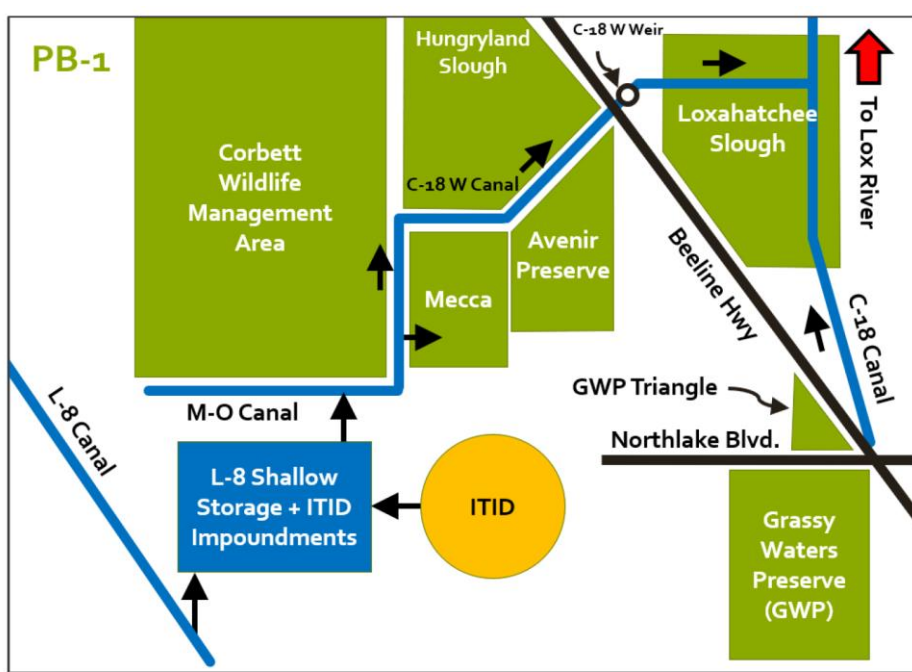


Figure 3: Alternative PB-1

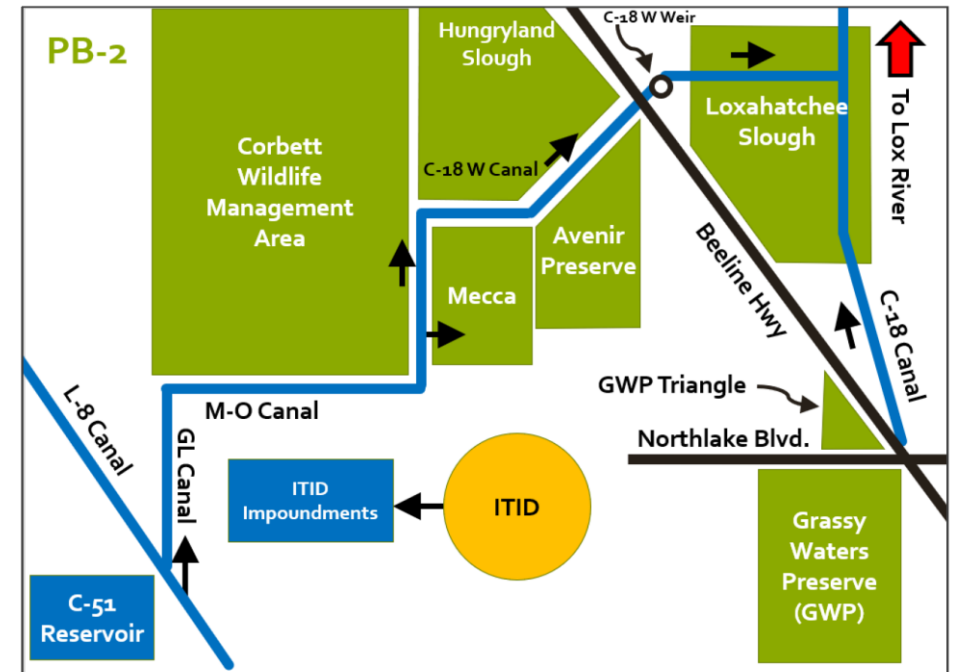


Figure 4: Alternative PB-2

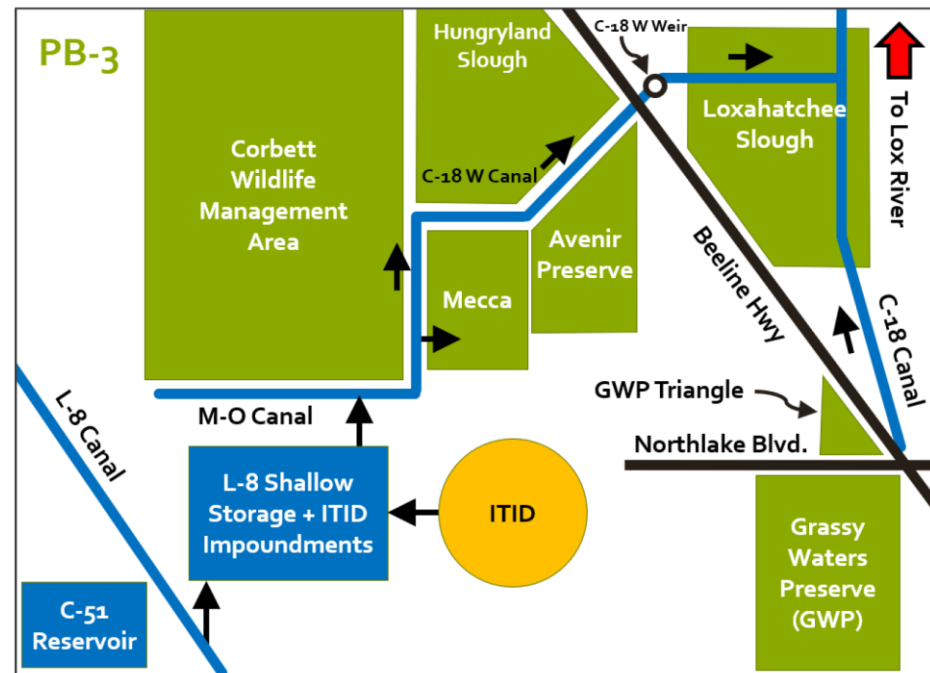
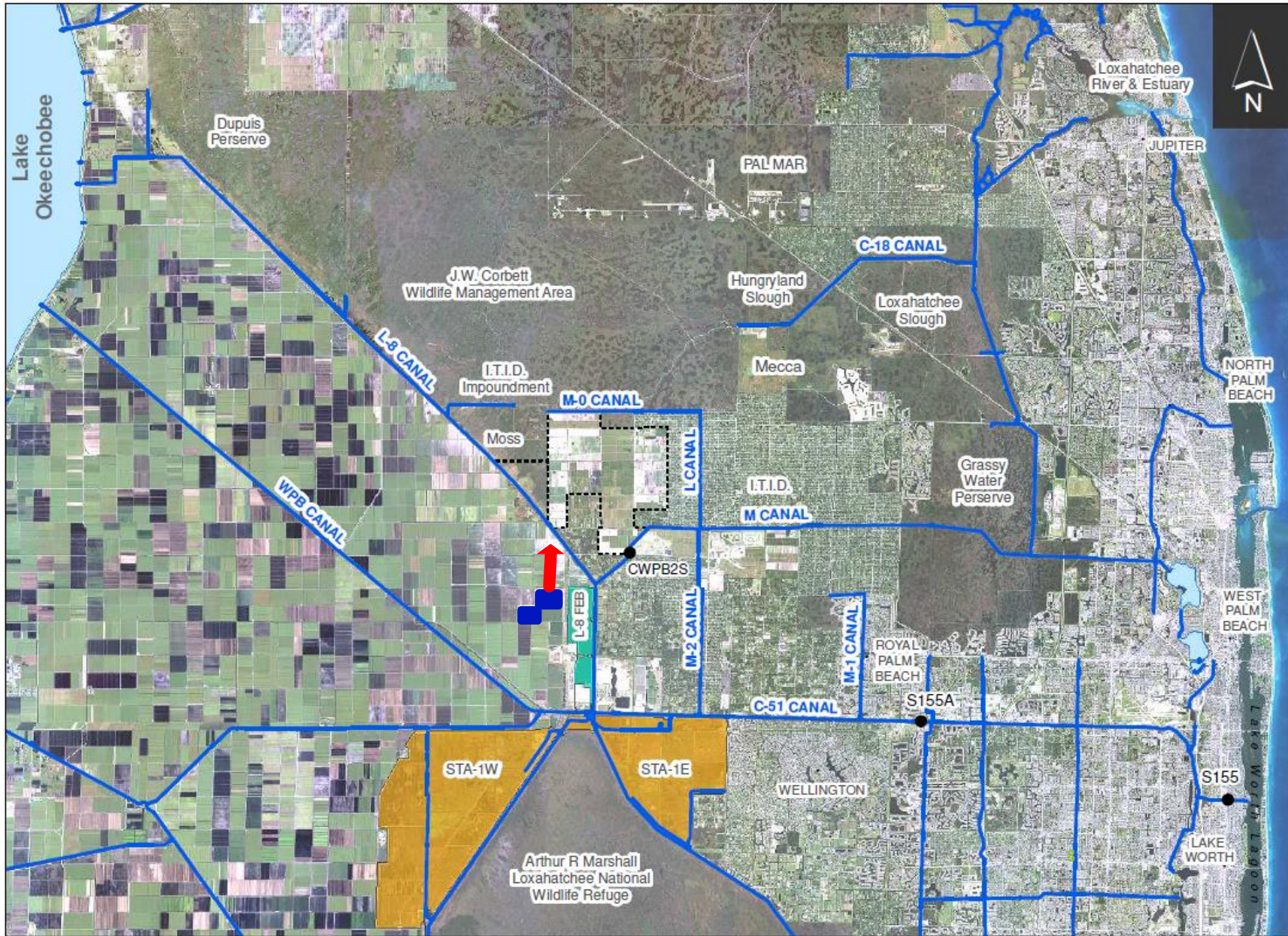
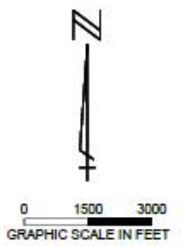
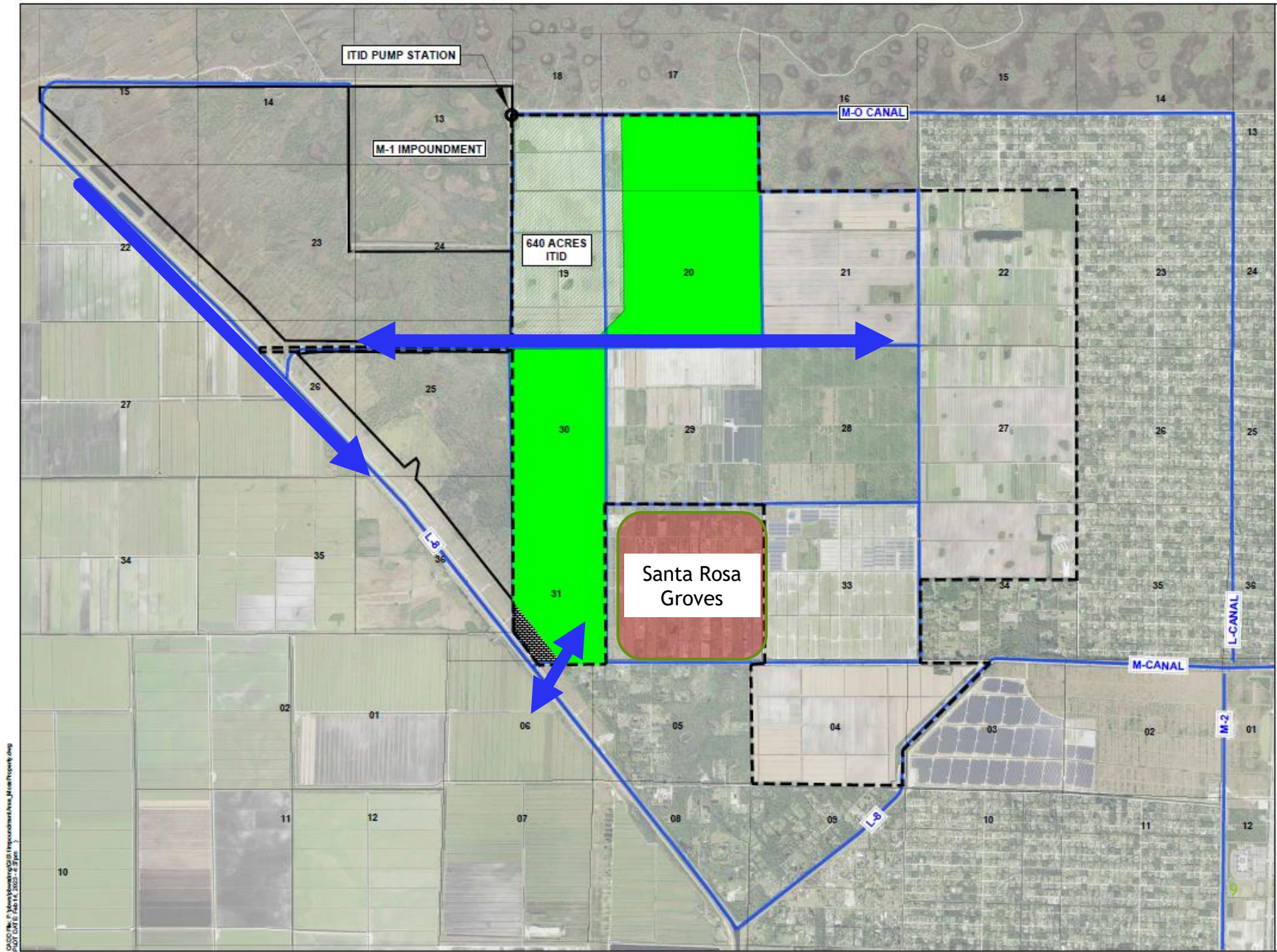


Figure 5: Alternative PB-3





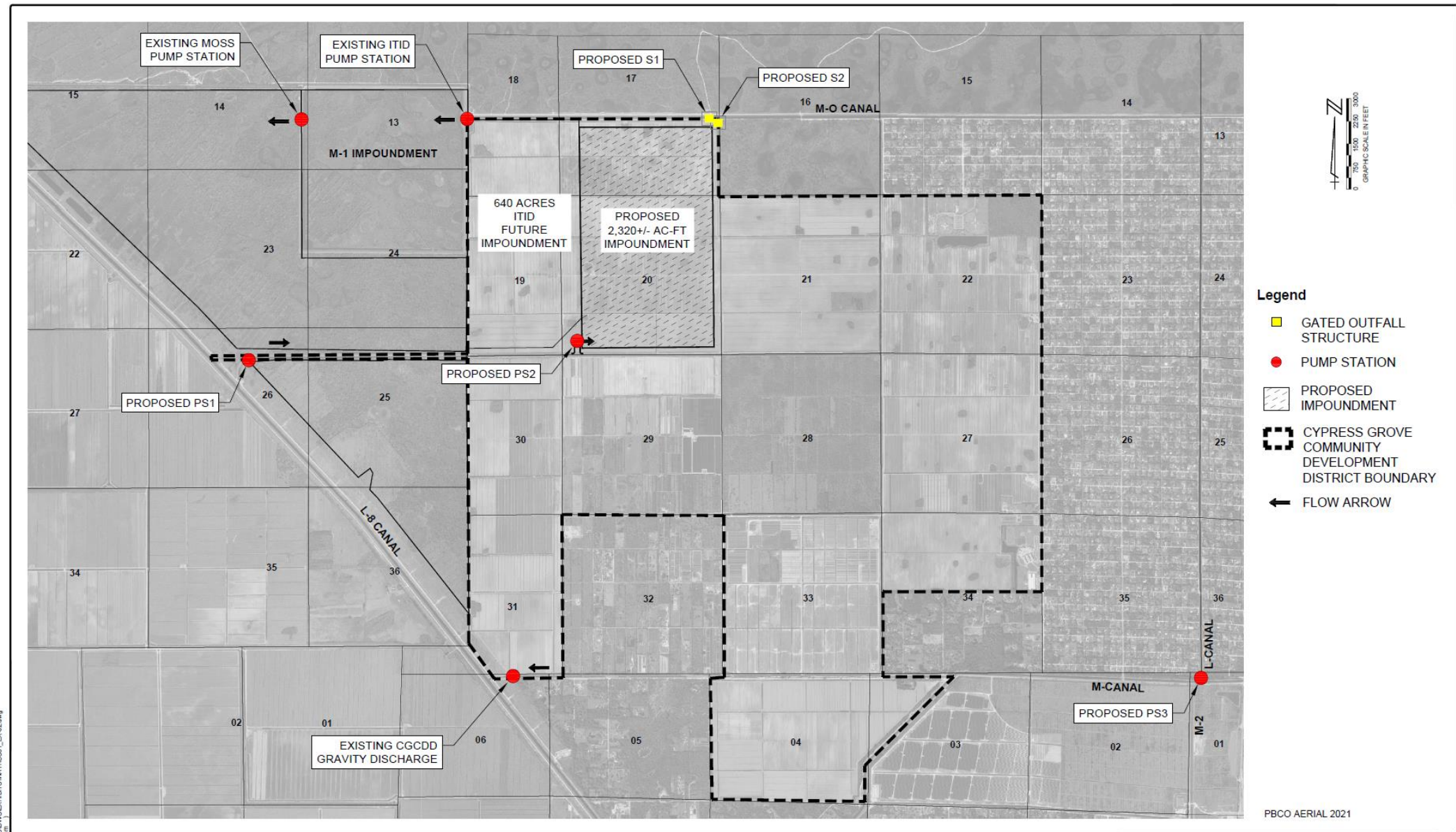
- Legend**
- Existing Pump Location
 - Cypress Grove Community Development District Boundary
 - ITID
 - Agricultural Production

1,600-Acre Parcel
February 2023

Prepared by:
MOCK • ROOS
CONSULTING ENGINEERS

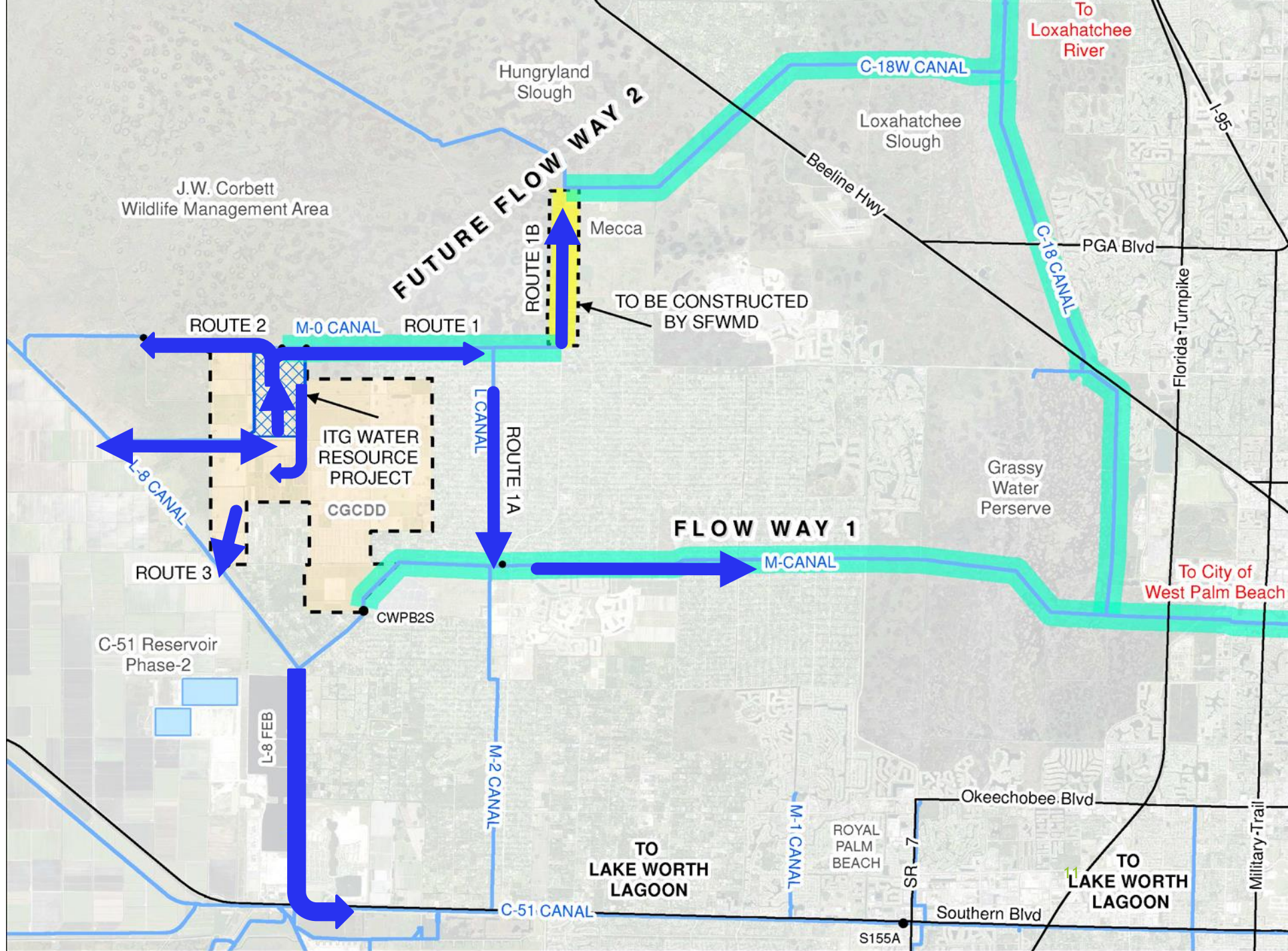
G:\00\1600 Acres\1600 Acres\GIS\Impoundment Area\Final Property.dwg
 PLOT DATE: Feb 14, 2023 - 4:35pm

- ▶ 3,000 ac-ft
- ▶ Shared Levee with ITID
- ▶ Electric Pumps
- ▶ 2 New Pumps at CGCDD Main Pump Station
- ▶ 2 New Pumps at Impoundment
- ▶ Gravity Structure to ITID M-O Canal
- ▶ Gravity Structure to CGCDD
- ▶ 2 New Pumps at ITID L-Canal to M-Canal



CADD File: F:\work\projects\CAD\DWG\EXHIBITS\WATER\S1_EX-02.dwg
 PLOT DATE: Aug 15, 2023, 1:14:00m
 This is a plot from an unapproved drawing.

Vertical Datum: NAVD83 P.A. No. COS93-00 Dwg. No. 42-45-17-03 Location: PALM BEACH COUNTY	<table border="1"> <thead> <tr> <th>No.</th> <th>Date</th> <th>By</th> <th>Revision</th> </tr> </thead> <tbody> <tr> <td> </td> <td> </td> <td> </td> <td> </td> </tr> </tbody> </table>	No.	Date	By	Revision					SEAL PATRICK V KIRBY Florida P.E. No. 44013	MOCK • ROOS CONSULTING ENGINEERS 5720 Corporate Way, West Palm Beach, Florida 33407 (561) 663-3113, www.MockRoos.com	ITG WATER RESOURCE PROJECT	PROJECT BASEMAP	AUGUST 2023 EX-02
No.	Date	By	Revision											



J.W. Corbett
Wildlife Management Area

Hungryland
Slough

FUTURE FLOW WAY 2

ROUTE 1B

Mecca

TO BE CONSTRUCTED
BY SFWMD

ROUTE 2

M-0 CANAL

ROUTE 1

ITG WATER
RESOURCE
PROJECT

CGCDD

CWPB2S

C-51 Reservoir
Phase-2

L-8 FEB

ROUTE 3

L-8 CANAL

L-CANAL

ROUTE 1A

FLOW WAY 1

M-CANAL

To City of
West Palm Beach

TO
LAKE WORTH
LAGOON

C-51 CANAL

ROYAL
PALM
BEACH

SR 7

Southern Blvd

S155A

TO
LAKE WORTH
LAGOON

Okeechobee Blvd

Military Trail

C-18W CANAL

Loxahatchee
Slough

Beeline Hwy

To
Loxahatchee
River

C-18 CANAL

PGA Blvd

Florida Turnpike

I-95

Grassy
Water
Preserve

Benefits

- ▶ Stores and cleans water that goes to:
 - ▶ Grassy Waters Preserve
 - ▶ City of West Palm Beach Water Supply System
 - ▶ Northwest Fork of the Loxahatchee River
- ▶ Provides critical connection of the C-51 Reservoir Phase 2 storage facility and L-8 Canal to M-O Canal. Partially completes Flow Way 2 as defined by Palm Beach County.
- ▶ Reduce discharges to Lake Worth Lagoon
- ▶ Potential to improve Indian Trail Improvement District's flood protection and fire suppression.
- ▶ Improves water quality of water being discharged to Lake Worth Lagoon if discharged back to L-8 Canal.

Ownership and Operation

- ▶ A Draft Memorandum of Understanding (MOU) has been distributed to:
 - ▶ Palm Beach County
 - ▶ City of West Palm Beach
 - ▶ Indian Trail Improvement District
 - ▶ Cypress Grove Community Development District
- ▶ Cypress Grove CDD is a government entity that has staff to operate their surface water management system
- ▶ Indian Trail Improvement District has staff to operate their surface water management system
- ▶ Design Coordination with PBC and SFWMD