

# **LOXAHATCHEE RIVER WATERSHED LOCAL PDT ALTERNATIVE**



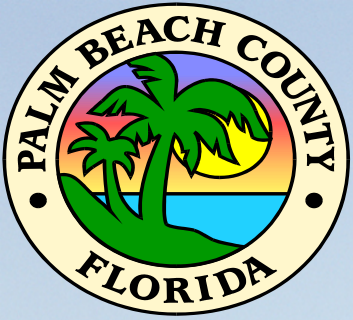
**PRESENTATION TO  
WATER RESOURCES TASK FORCE  
PALM BEACH COUNTY**

**March 3, 2016**

**Ken Todd, P.E.**

**Water Resource Manager**

**Palm Beach County**



# 2015 Local Regional Goals

- **Provide Restoration Flows to Loxahatchee River**
- **Enhancement of Loxahatchee Slough**
- **Reduce Freshwater flows to Lake Worth Lagoon**
- **Enhance Water Supply for Various Utilities**
- **Better Flood Protection for Western Communities**

# Proposed Storage and Flow-way TSP Improvements - 2010

Flow-way #3 (lands have been acquired)

G-160 (constructed)

G-161 (constructed)

L-8 Reservoir

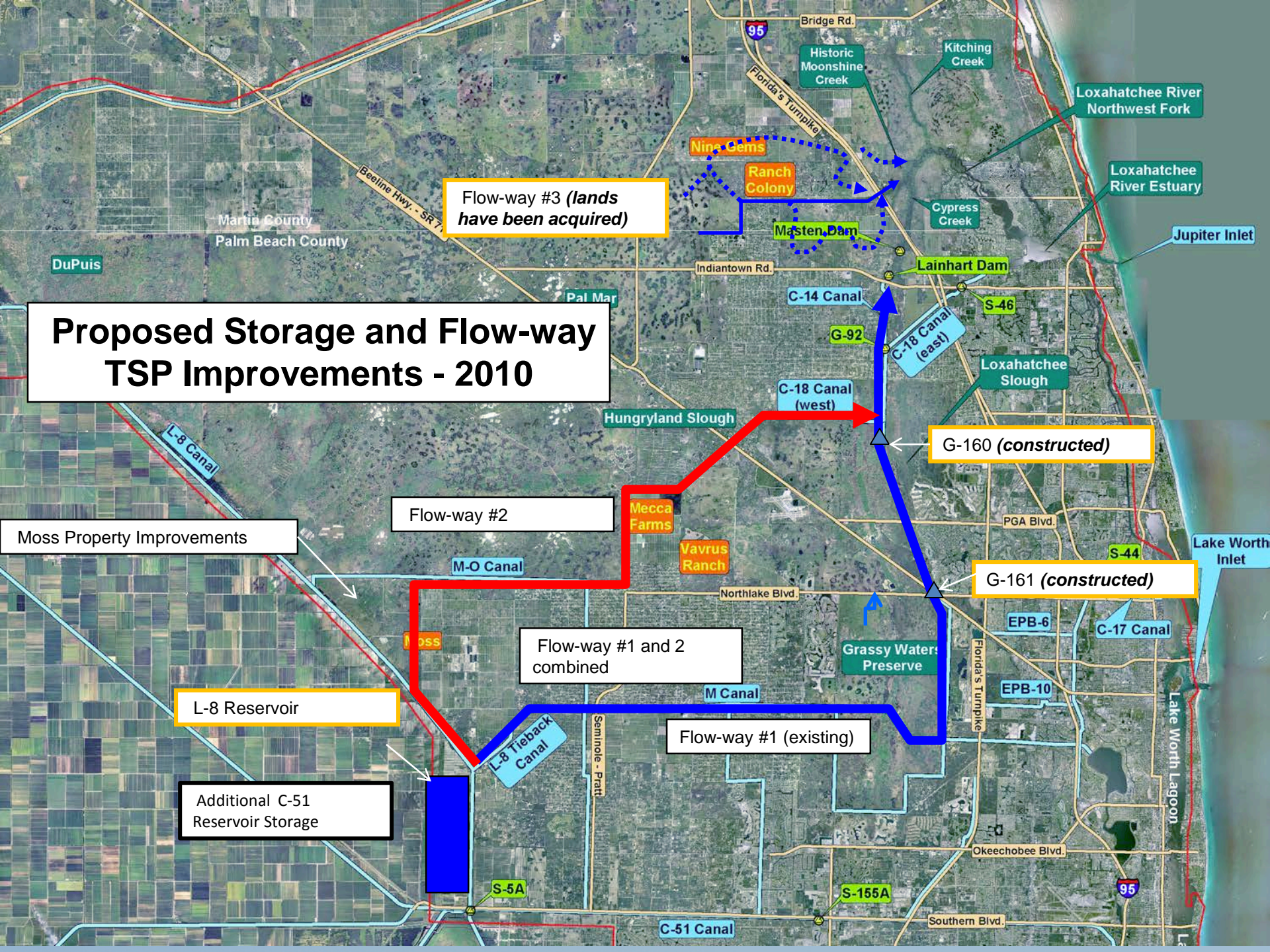
Additional C-51 Reservoir Storage

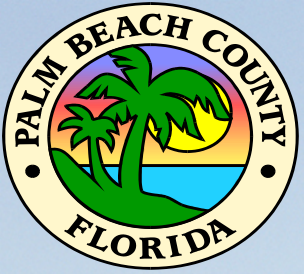
Flow-way #2

Flow-way #1 and 2 combined

Flow-way #1 (existing)

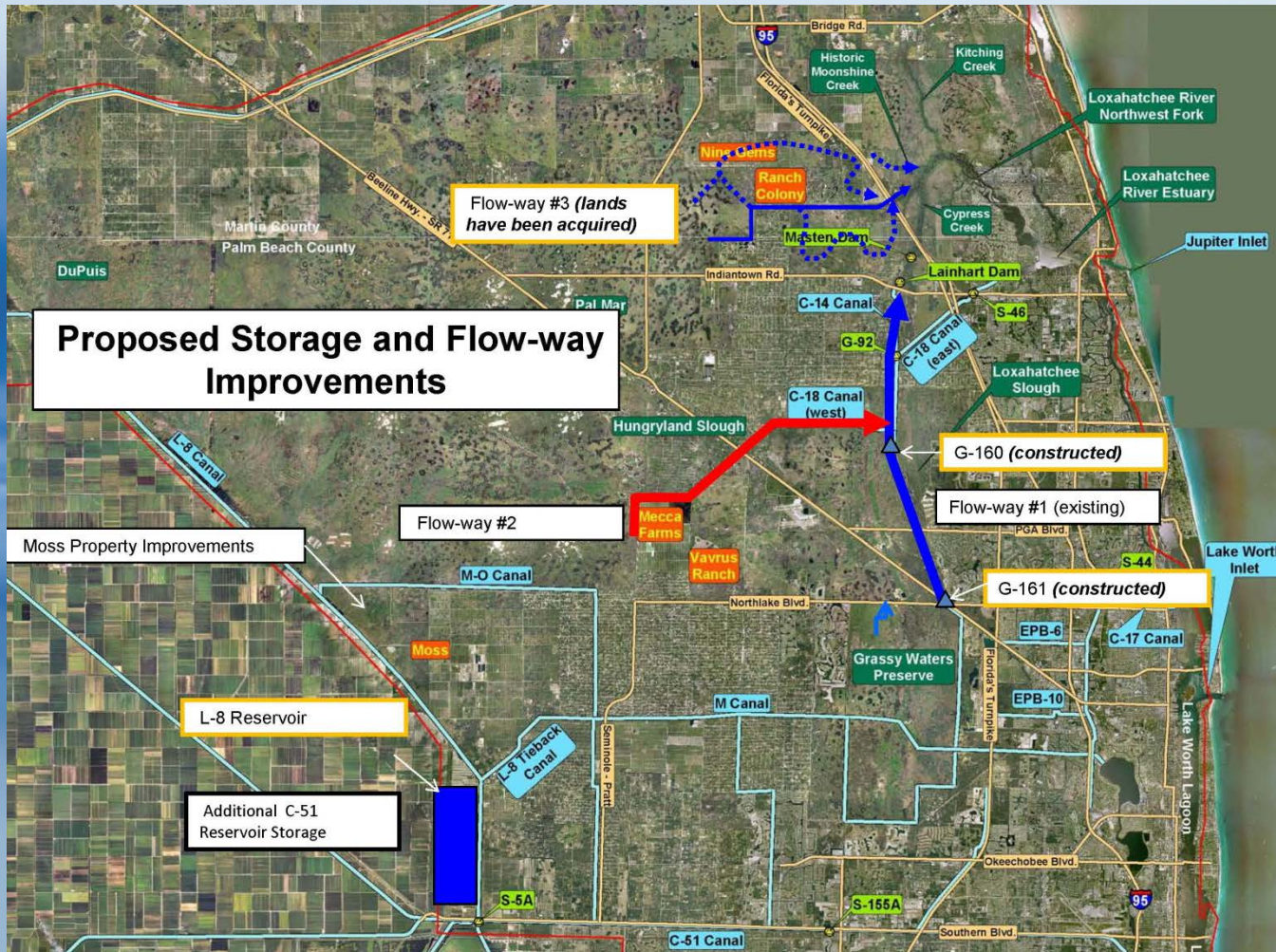
Moss Property Improvements





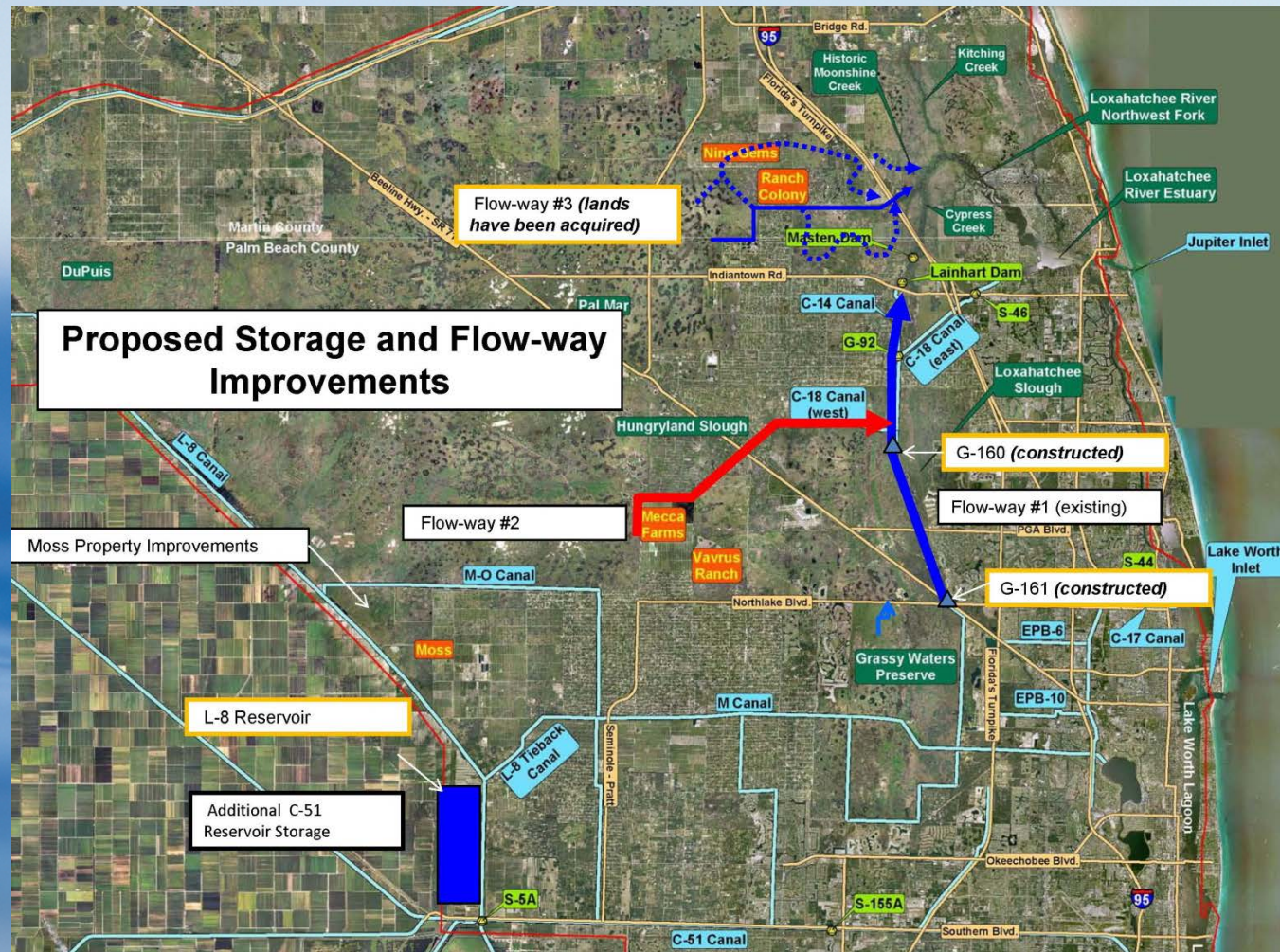
# 2015 Corps Goals

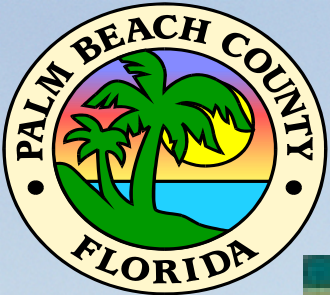
1. Restoration Flows to Lox River
2. Enhancement of Lox Slough



# Favored PDT Alternative Components

- Partial Use of Flow-way 2 Only
- Mecca Impoundment
- ASR Wells used for Deep Water Storage
- C-18 Canal used for Conveyance



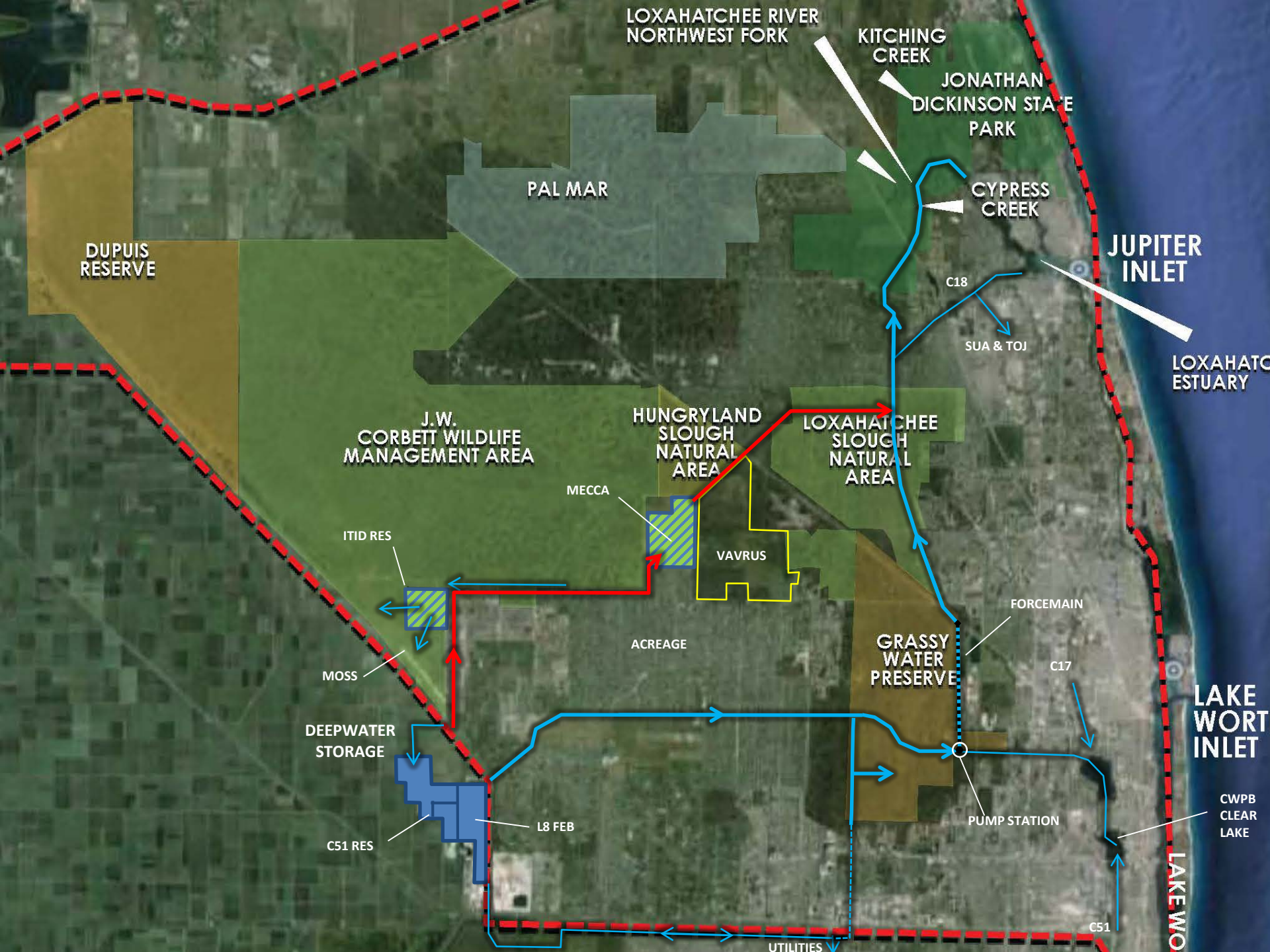


# Key Concerns with Current Goals

- **Insufficient Funding for Flow-ways 1 & 2**
- **Possible Impacts to Utilities Using ASR**
- **ASR... A Good Option?**
  - **Unproven Technology (at this location & volume)**
  - **Loxahatchee River won't meet Restoration Flows**
  - **Lake Worth Lagoon still receives too much freshwater**
  - **Water Supply is not enhanced**
  - **Flood Protection not improved**

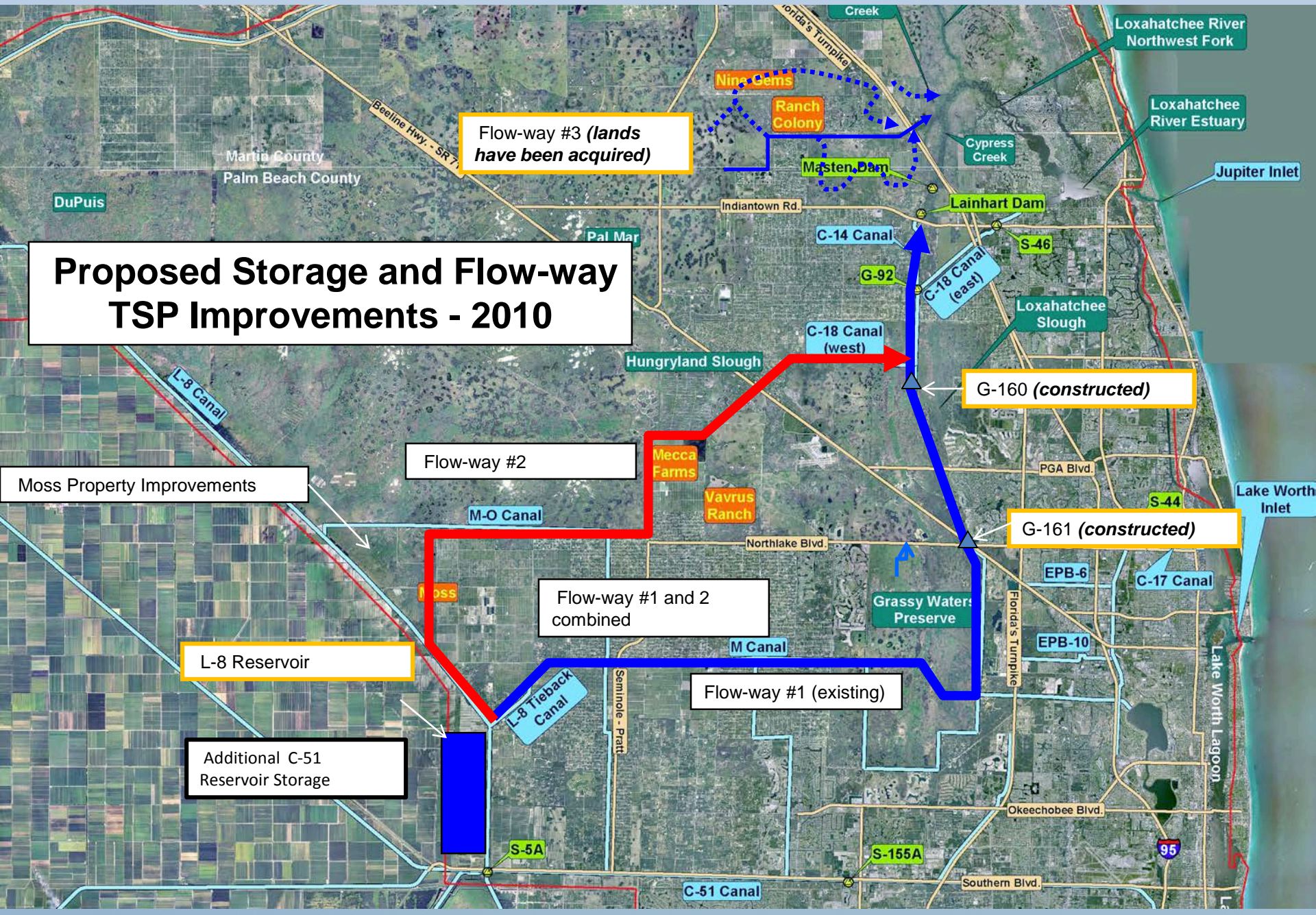
# Local Alternative Plan Study Components

- Use C-51 Reservoir as Deep Water Storage
- Utilize Control 2 Pump Station
- Use Flow-way 1 For Conveyance
- New Pump Station and Force Main – Along East GWP Border (if necessary)
- Eliminate Flows from Lake Okeechobee Through L-8 Canal to LW Lagoon
- Conveyance South From Flow-way 1 to C-51 Canal via LWDD E-1 Canal to LWDD System





# Which Takes Us Back to 2010



## Proposed Storage and Flow-way TSP Improvements - 2010

Flow-way #3 (lands have been acquired)

G-160 (constructed)

G-161 (constructed)

L-8 Reservoir

Additional C-51 Reservoir Storage

Flow-way #2

Flow-way #1 and 2 combined

Flow-way #1 (existing)

Moss Property Improvements

DuPuis

Martin County  
Palm Beach County

Pal Mar

Indiantown Rd.

Hungryland Slough

Mecca Farms

Vavrus Ranch

Northlake Blvd.

M Canal

Seminole - Part

C-51 Canal

C-14 Canal

C-18 Canal (west)

C-18 Canal (east)

G-92

Lainhart Dam

S-46

Loxahatchee Slough

PGA Blvd.

S-44

EPB-6

EPB-10

Florida's Turnpike

Okeechobee Blvd.

Southern Blvd.

Loxahatchee River Northwest Fork

Loxahatchee River Estuary

Jupiter Inlet

Lake Worth Inlet

Lake Worth Lagoon

95



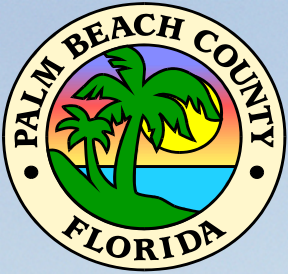
# Loxahatchee River Watershed Stakeholders Conclusions

1. Alternative should be a Locally Preferred Option with SFWMD as Lead Agency
2. Alternative Components critical to meeting Loxahatchee River MFL & Restoration flows
3. Flow-way 1 & 2 will be beneficial to Water Supply, Lake Worth Lagoon Water Quality, and Flood Protection
4. Local & State Governments should pursue funding through grants, cooperative funding, and partnerships



# Funding Options

- Cooperative Federal Funding (if part of federal project)
- SFWMD
  - If designated as pilot project under SB 552 – Water Policy Bill
  - Cooperative Funding: \$9 million available
- Local Government Sources
  - Ad valorem
  - Utility Revenue (C-51 component subject to allocation agreements and CUP modifications)



# Funding Options

- State
  - \$3 million for C-51 in current budget
  - Projects to benefit Lake Worth Lagoon recognized in the Report of the Select Committee for Indian River Lagoon (as is C-51)
  - LATF (Amendment 1 funding)
  - Water Projects
  - Section 319 Grants for Select Components