



New Stormwater Requirements for Local Governments in House Bill 53

Water Resources Task Force Meeting

July 29, 2021

JonesEdmunds 

What is in HB 53?

“Public Works Bill”

Effective July 1, 2021

Defines “Public Works Project”

Limits local preferences in RFQ/RFP

20-year needs analysis





Public Works Project

- Activity > \$1M
- Infrastructure construction, maintenance, or repair
- Paid for with any State-appropriated \$

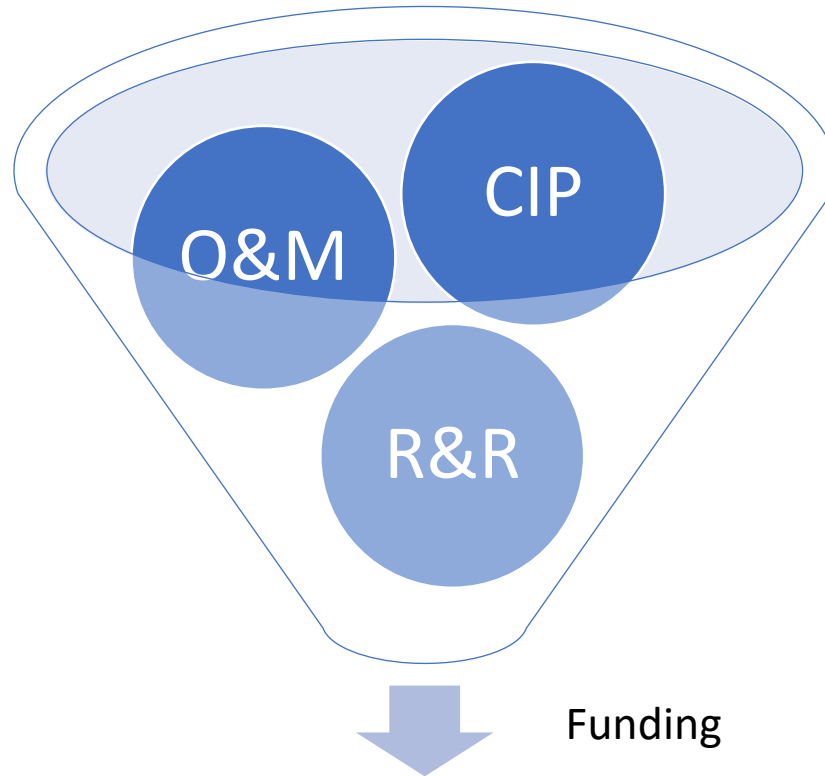


Expenditure Analyses

20-Year Needs Analysis
(5-year Plans)

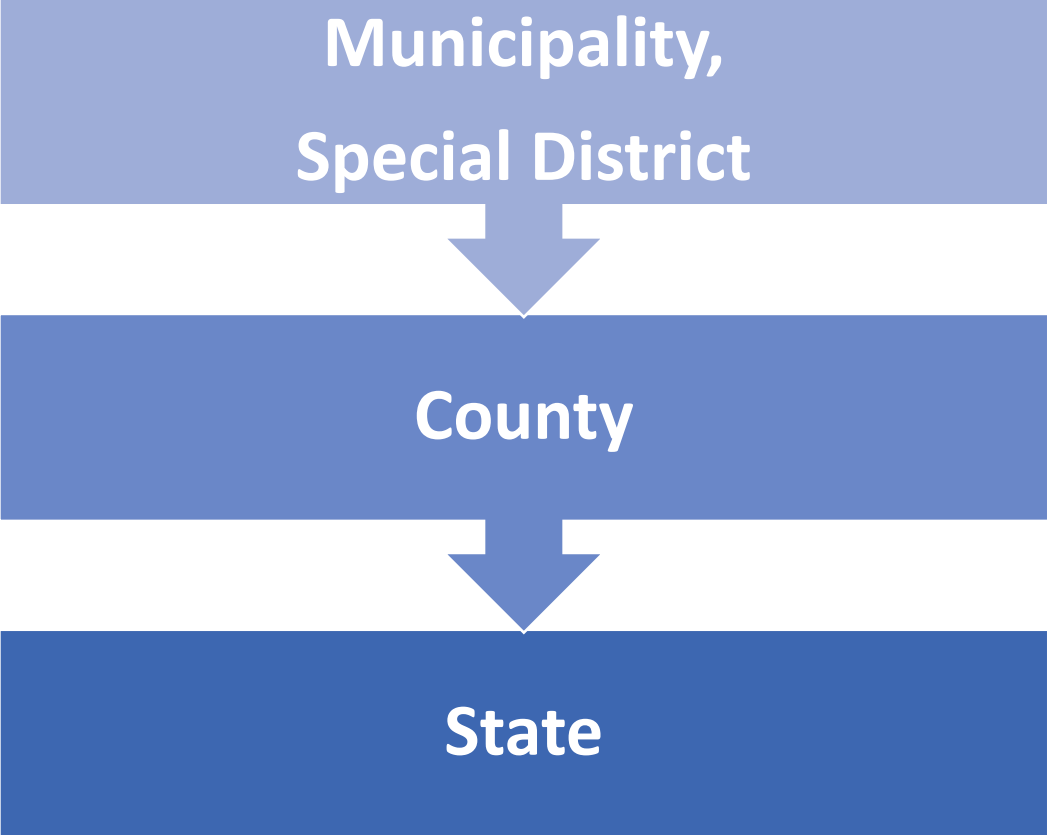
Funding for Planned
Projects

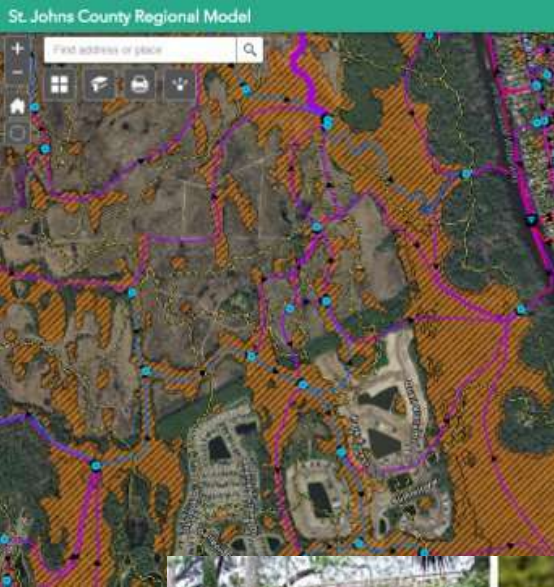
Background Information



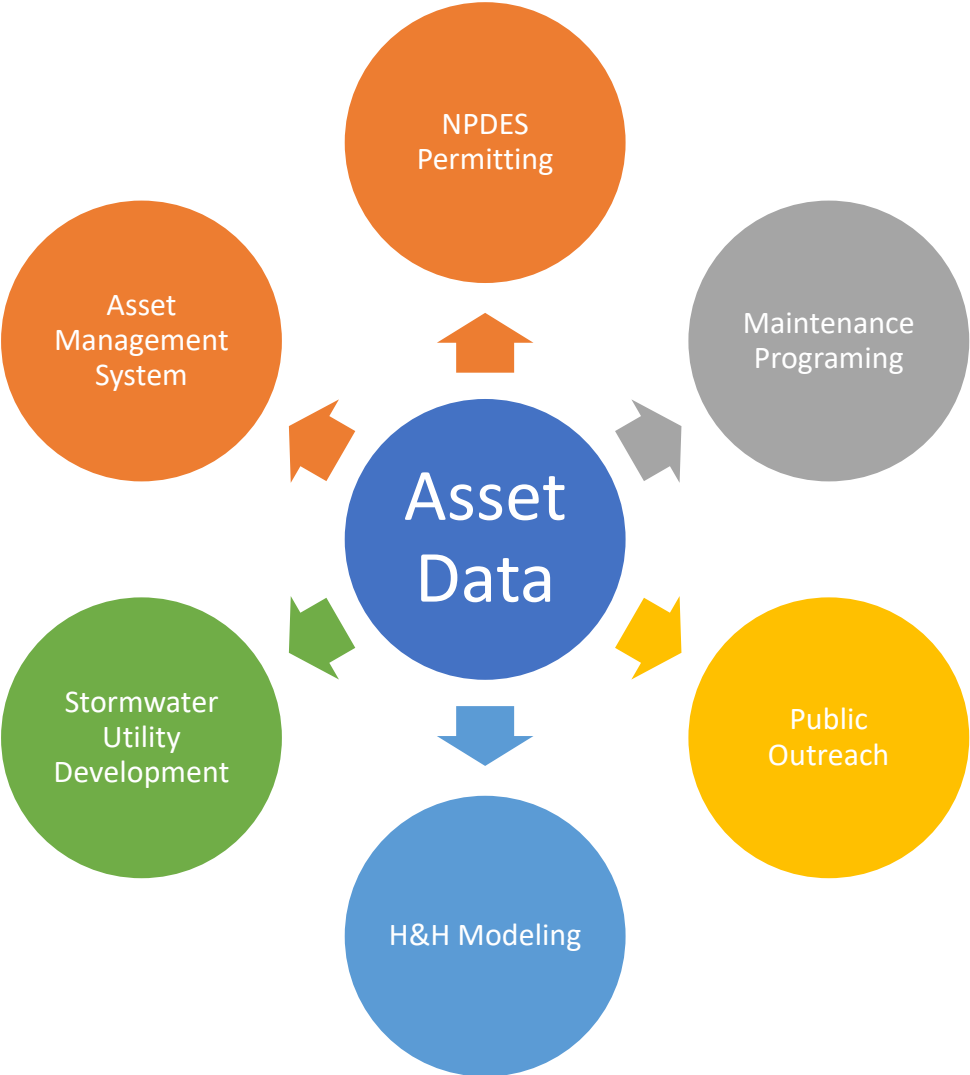
Stormwater Template

What is the Process?





Stormwater Management – Geospatial Asset Data



Stormwater Management – Asset Management Systems (AMS)

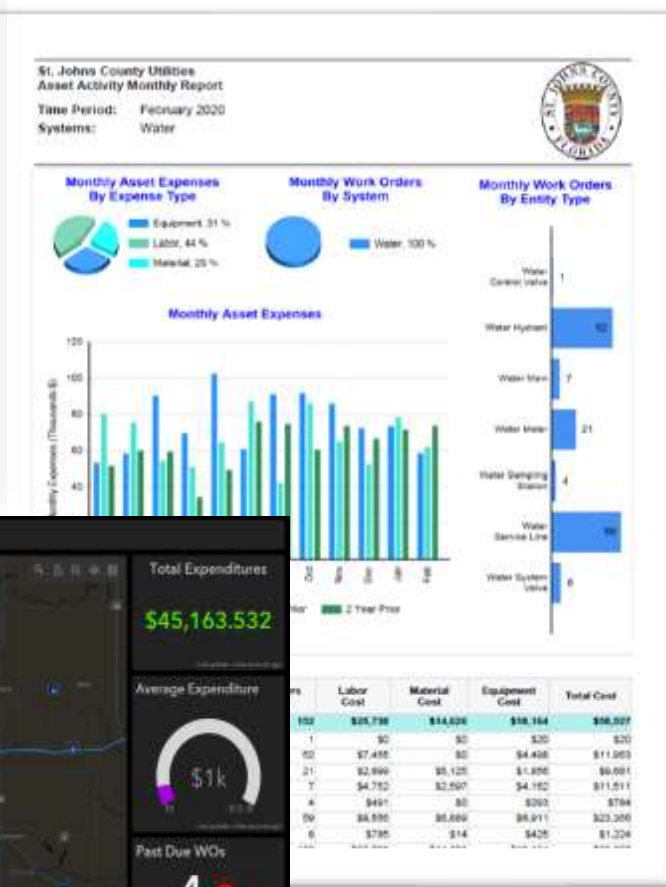
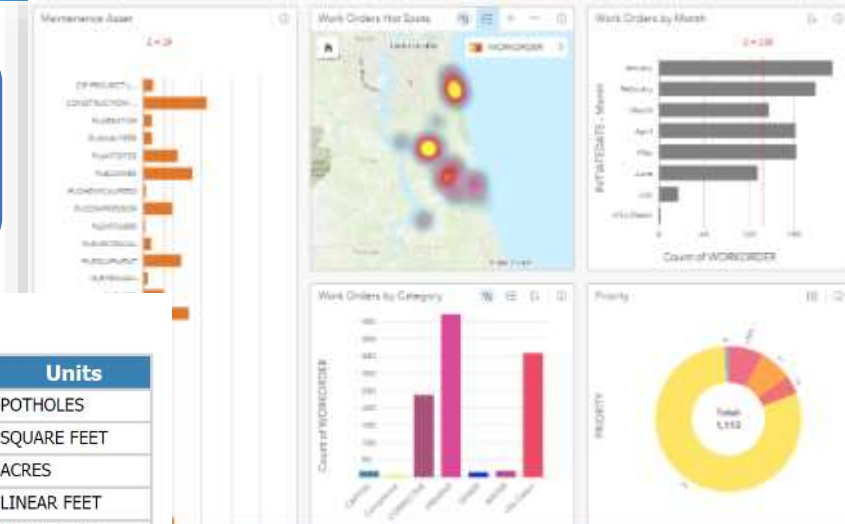
What is an AMS?

- Provides a clear picture of what assets you have and what it takes to operate & maintain
- Spatial, Ideally
- Enterprise (Organization-wide)
- Cityworks, iWorQ, Cartegraph, etc.



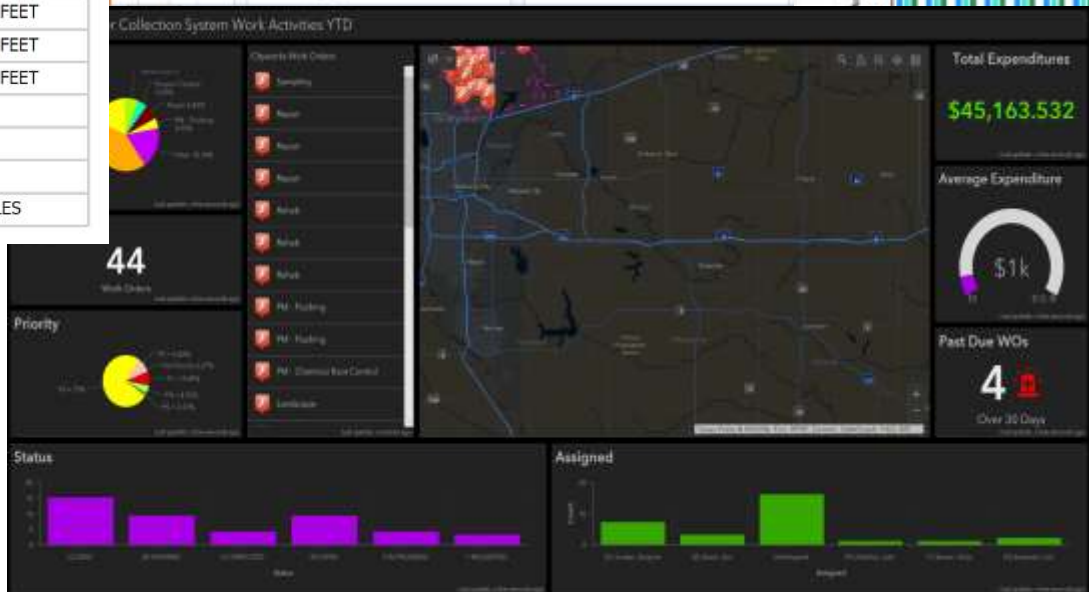
Stormwater Management – Asset Management System (AMS)

Reports and Dashboards



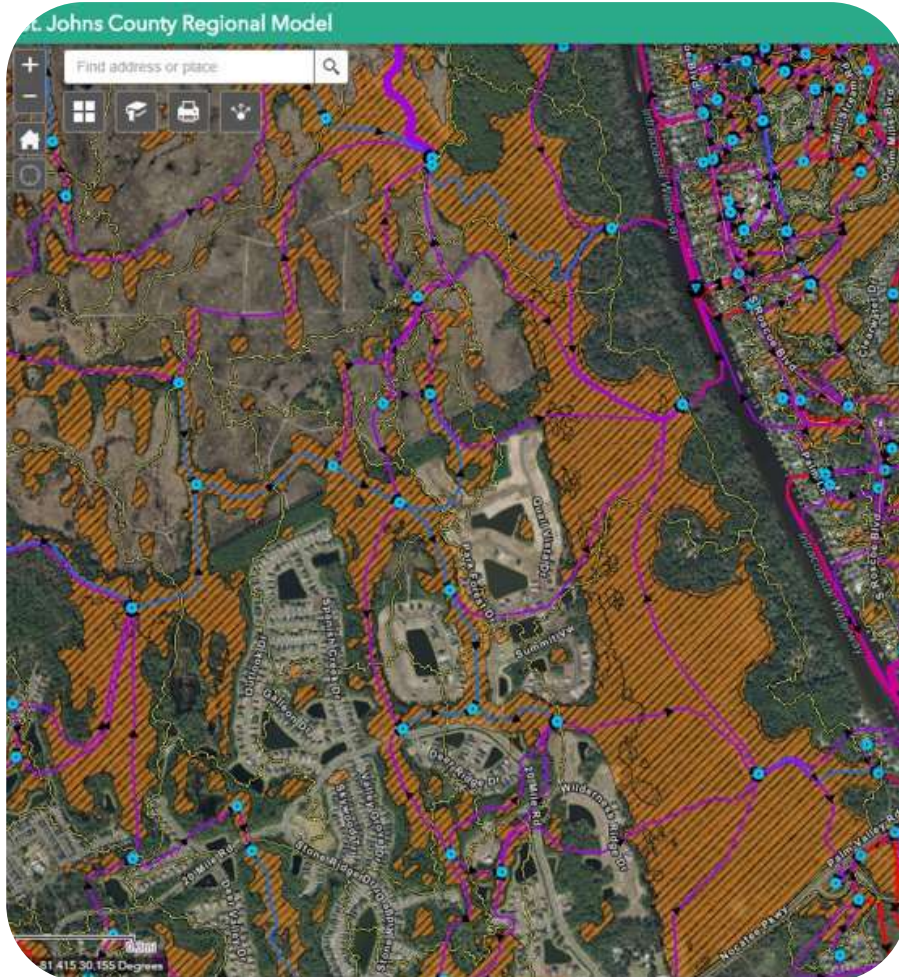
Year to Date Activities

Activities	Total Cost	Total Qty	Units
Repaired Potholes	\$65,842.22	3968.00	POTHLES
Repaired Sidewalks	\$110,555.51	12556.00	SQUARE FEET
Roadside Mowing	\$295,460.20	9386.26	ACRES
Ditch Maintenance	\$286,863.55	113822.30	LINEAR FEET
Culvert Install - RCP	\$345,633.75	2844.00	LINEAR FEET
Outfall Ditch Cleaning	\$7,895.17	12435.77	LINEAR FEET
Culvert Install	\$93,195.24	1358.00	LINEAR FEET
Manual Clean Cross Drain	\$4,061.00	119.00	EACH
Manual Clean Side Drain	\$25,726.92	1283.00	EACH
Manual Catch Basins	\$15,806.73	1229.00	EACH
Shoulder Maintenance	\$226,678.24	123244.50	POTHLES



	Labor Cost	Material Cost	Equipment Cost	Total Cost
100	\$24,738	\$14,026	\$16,164	\$54,927
1	\$0	\$0	\$20	\$20
02	\$7,485	\$0	\$4,458	\$11,943
21	\$2,899	\$5,125	\$1,856	\$9,880
7	\$4,782	\$2,297	\$4,182	\$11,261
4	\$451	\$0	\$203	\$654
09	\$4,886	\$5,889	\$5,911	\$16,686
6	\$795	\$14	\$425	\$1,234

Watershed Planning Benefits





QUESTIONS?

Contact:

Brett Cunningham, PE

352-377-5821

bcunningham@jonesedmunds.com