

# COMPREHENSIVE EVERGLADES RESTORATION PLAN

# LOXAHATCHEE RIVER WATERSHED RESTORATION PROJECT (LRWRP)

Presented to the Task Force by:

Eva Velez

Strategic Program Manager

Jacksonville District

U.S. Army Corps of Engineers

Date 17 October 2019



US Army Corps  
of Engineers®



# COMPREHENSIVE EVERGLADES RESTORATION PLAN

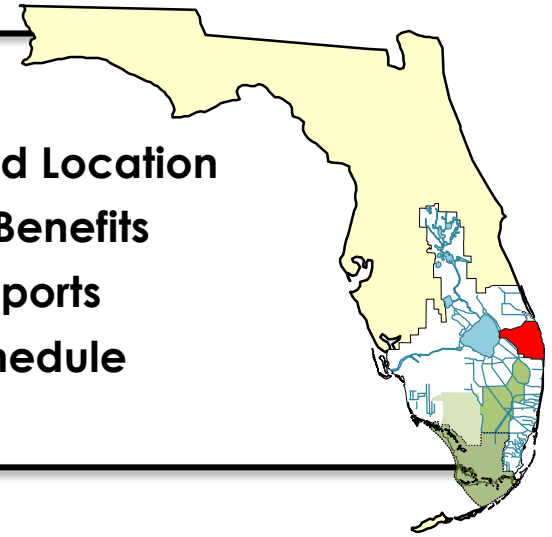
## LOXAHATCHEE RIVER WATERSHED RESTORATION PROJECT (LRWRP)

### PRESENTATION PURPOSE

- Update the Palm Beach County Water Resources Task Force on progress made to complete the required Project Implementation Report for agency approval and submission to Congress.

### AGENDA

- Purpose and Location
- Alt 5R and Benefits
- Project Supports
- Current Schedule



US Army Corps  
of Engineers ®



U.S. ARMY

# LOXAHATCHEE RIVER WATERSHED RESTORATION PROJECT (LRWRP)

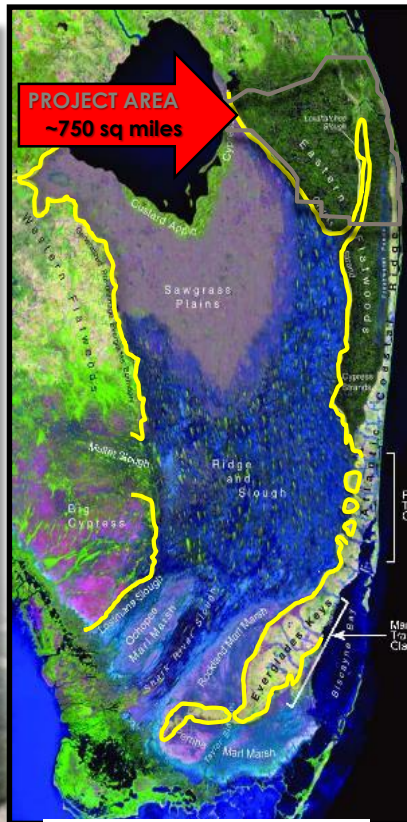
## PURPOSE & LOCATION

To restore and sustain the overall quantity, quality, timing, and distribution of freshwater to the federally designated National Wild and Scenic Northwest Fork of the Loxahatchee River, while maintaining levels of flood risk and water supply.

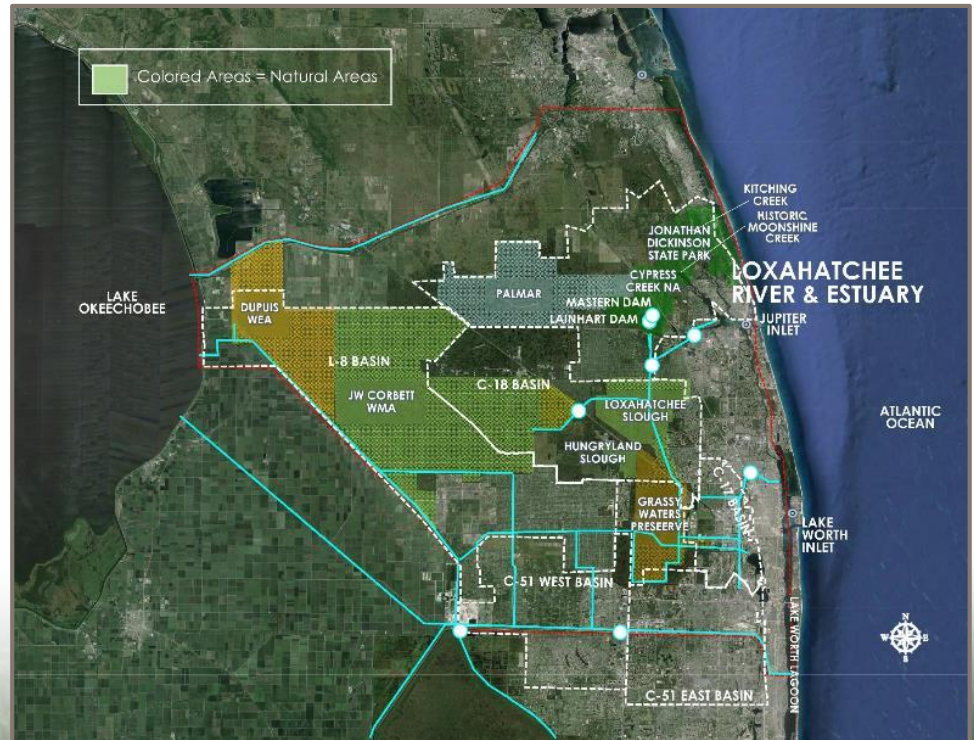
This project also seeks to restore, sustain, and reconnect the area's wetlands and watersheds that form the historic headwaters for the river.



Existing



Pre-development



Existing, showing basins & natural areas



US Army Corps of Engineers



U.S. ARMY

# LOXAHATCHEE RIVER WATERSHED RESTORATION PROJECT (LRWRP)

## GETTING THE WATER RIGHT – ALTERNATIVE 5R

### ■ QUANTITY

- ✓ Reducing amount of water rapidly discharged to tide through the C&SF System

### ■ QUALITY

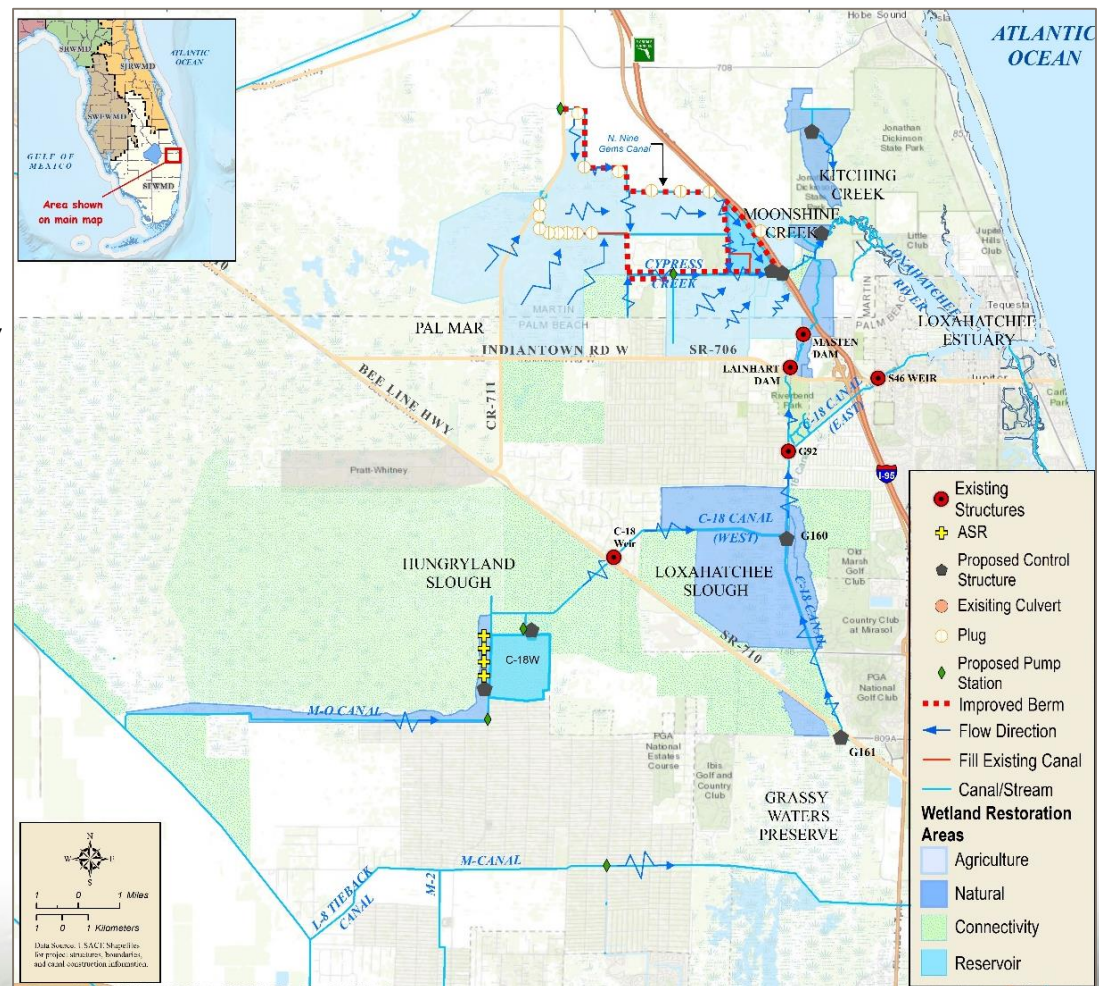
- ✓ Using lower nutrient water sources, and gaining ancillary WQ benefits (restored and enhanced wetland areas)

### ■ TIMING

- ✓ Reservoir and ASR storage captures high flows and maintains water for release during dry periods

### ■ DISTRIBUTION

- ✓ Redirecting existing diverted water back into former sloughs, wetlands and Loxahatchee River



# RECOMMENDED PLAN ENVIRONMENTAL BENEFITS



**Restores flows: 91% of target for dry season, 98% for wet season (47% if no project)**

**Restores 27,000 acres of wetlands, reconnects an additional 51,000 acres**



**Improves habitat for fish and wildlife**

**Improves habitat for listed species, including Everglade snail kite & manatee**



US Army Corps of Engineers®



U.S. ARMY

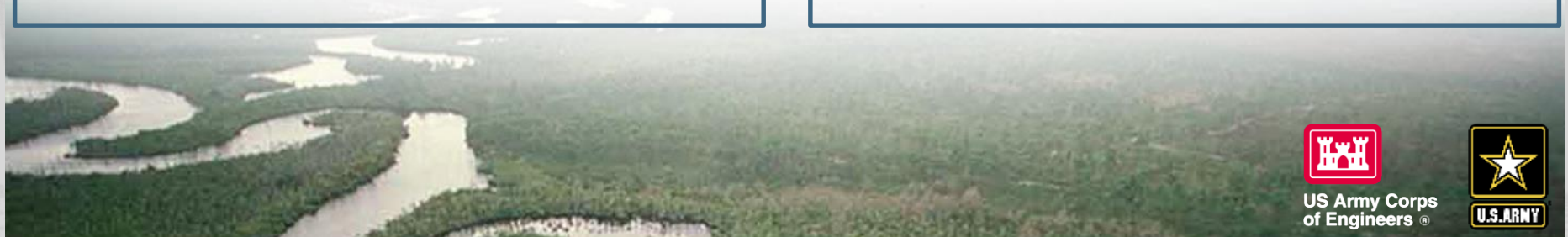
## PROJECT SUPPORT

### COMMENTS OF SUPPORT

- US Environmental Protection Agency
- South Florida Water Management District
- FL Fish and Wildlife Conservation Commission
- FL Department of Environmental Protection
- FL Department of Agriculture and Consumer Services
- Martin County
- Loxahatchee River District
- Fishermen Against Destruction of the Environment

### SUPPORTING WITH CONCERNS

- (4) Local Water Control Districts
  - Indian Trail Improvement District
  - South Indian River Water Control District
  - Hobe - St. Lucie Conservancy District
  - Pal-Mar Water Control District
- Palm Beach County
- Everglades Law Center / Sustainable Palm Beach
- City of West Palm Beach



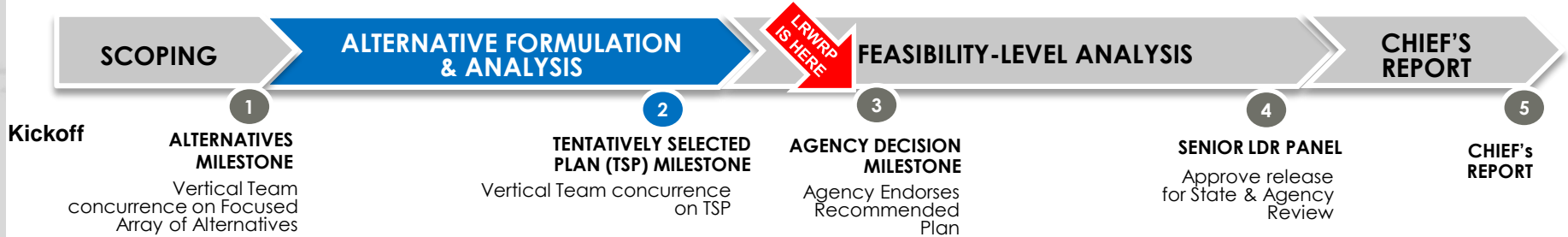
US Army Corps  
of Engineers ®



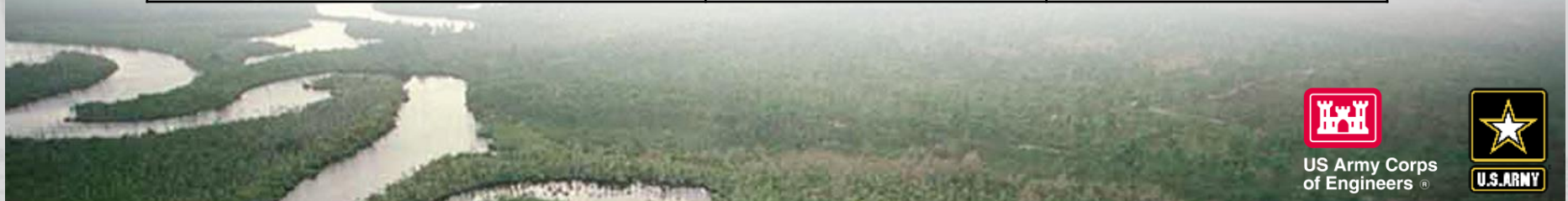
U.S. ARMY

# SCHEDULE

## SMART PLANNING PROCESS



ACTIVITY	BASELINE	SCHEDULE
Kickoff	21 Jan 2016	21 Jan 2016 (A)
1 - Alternatives Briefing	25 Apr 2016	25 Apr 2016 (A)
2 - Tentative Selected Plan Briefing	31 Jul 2018	31 Jul 2018 (A)
3 - Agency Decision Briefing	25 Jun 2019	27 Jul 2019 (A)
4 - Senior Leaders Panel Briefing	13 Dec 2019	13 Dec 2019
5 - Chief's Report	16 Mar 2020	16 Mar 2020



US Army Corps of Engineers



U.S. ARMY