

Community-Based Agencies

ANNUAL REPORT

FY
2024





**Palm Beach County
Board of County Commissioners**

Maria G. Marino, Mayor

Sara Baxter, Vice Mayor

Gregg K. Weiss

Joel G. Flores

Marci Woodward

Maria Sachs

Bobby Powell Jr.

County Administrator

Verdenia C. Baker

Assistant County Administrator

Tammy K. Fields

Youth Services Department Director

Elisa Cramer

Table of Contents

- 3 Letter from Division Director
- 4 Letter from Director
- 5 Financial Summary



8 Economic Access

Florence Fuller Child Development Centers, Inc. (*The Promise Program: Teen Leadership Initiative*)*
Pace Center for Girls, Inc. (*Healthy Youth Transitions*)*
Vita Nova, Inc. (*Pathways to Employment*)



12 Educational Supports

Digital Vibez, Inc. (*Digital Expression: Lifetime of Consequences*)
Girl Scouts of Southeast Florida, Inc. (*Girl Scout Leadership Experience*)
Scholar Career Coaching, Inc. (*Mentoring - College & Career Readiness*)
The Arc of Palm Beach County, Inc. (*Stand Up & Youth Employment Programming*)



17 Ensuring Safety & Justice

Aid to Victims of Domestic Abuse, Inc. (AVDA) (*Commit to Change: A Violence Prevention Initiative*)
Children of Inmates, Incorporated (*Boyz to Men/ Girlz to Women*)*
Children's Case Management Organization, Inc. (*Families First of Palm Beach County*) (*Y.E.S. Youth: Empowered and Secure Program*)
Choice to Change, Inc. (*Believe & Achieve Program*)
Communities In Schools of Palm Beach County, Inc. (*Charting for Success Program*)
Community Child Care Center of Delray Beach, Inc. (*Achievement Centers for Children and Families*) (*Menteens of the Future*)*
Gulfstream Goodwill Industries, Inc. (*Supervised Release*)
United Way of Palm Beach County, Inc. (*Enhanced Mentoring Engagement - Level Up*)

24 Youth Empowerment Centers

City of Riviera Beach
For the Children, Inc.
Student ACES, Inc.



27 Health & Wellness

Center for Child Counseling, Inc. (*Education and Prevention Services*)
Compass, Inc. (*Mental Wellness Program*)*
Connections Education Center of the Palm Beaches, Inc. (*Connections Health and Wellness Program*)
For the Children Inc. (*Healthy Families Healthy Kids*)*
Pace Center for Girls, Inc. (*Family Strengthening Program*)*



33 Parenting & Role Models

Children of Inmates, Inc. (*Babies 'N Brains Parenting*)*
Exchange Club/Dick Webber Center for the Prevention of Child Abuse for the Gold Coast, Inc. (*The Children's Healing Institute*) (*Parent Aide*)
Grandma's Place, Inc. (*Parent Support*)
The Literacy Coalition of Palm Beach County, Inc. (*Glades Family Education*)
The Children's Home Society of Florida (*Adoption Assistance Program*)*
The Children's Home Society of Florida (*The Family Visitation Center*)*



38 Social & Emotional Learning

American Association of Caregiving Youth, Inc. (*Caregiving Youth Foundation*)
Boys and Girls Clubs of Palm Beach County, Inc. (*Building Youth Resilience*)
City of Greenacres (*Teen Out-of-School Time Program*)
Community Child Care Center of Delray Beach, Inc. (*Achievement Center for Children and Families' Out-of-School Time Program*)*
Compass, Inc. (*Youth and Family Services*)*
Florence Fuller Child Development Centers (*Strong Kids Today for a Better Tomorrow*)*
Housing Partnership, Inc. (*Community Partners of South Florida*)
Milagro Foundation, Inc. (*Touch B.A.S.E. - Behavioral and Social Emotional Program*)
Prime Time Palm Beach County, Inc. (*Middle/High School Out-of-School Programs*)
The Path to College Foundation, Inc. (*Path to College Fellowship*)
The Urban League of Palm Beach County, Inc. (*Project Ready NULITES*)

46 Community-Based Agencies Location Map

* Agency receives funding for more than one program.



Letter from the Division Director

The Outreach and Community Programming (OCP) Division of the Youth Services Department continues to play a vital role in coordinating, planning, monitoring, and supporting our funded Community-Based Agency (CBA) programs and services for Palm Beach County residents. We remain steadfast to foster positive outcomes and growth within our community by providing needed supports and resources for youth and families throughout the county.

As part of our ongoing efforts, the Outreach and Community Programming Division is dedicated to working closely with CBAs to ensure the needed services, programs and supports are accessible and highly impactful. The overall goal is to maximize attainment of positive outcomes for youth and families across Palm Beach County. This annual report highlights our funded CBA programs, services and outcomes. Our collective work with CBAs aligns with the Youth Services Department's vision of "empowering youth and families to realize their full potential and be the driving force of a thriving community."

As the Director of Outreach and Community Programming, I am honored to lead a team of dedicated professionals and partner organizations who work tirelessly at growing brighter futures.

Thank you to our CBAs for all of the services, resources and supports provided to youth, parents and caregivers throughout Palm Beach County. Collectively, we are able to address critical needs, improve access to health and wellness supports, enable economic access, and enhance educational supports while keeping safety at the forefront of our collective agenda.

Thank you to the Outreach and Community Programming Division staff and the entire Youth Services Department team for all of the support and commitment to best enable our CBAs to provide evidence-based, promising and best-practice programs while serving youth and families.

I would like to extend my heartfelt thank you to the Board of County Commissioners and County Administration for the continued support and investment in youth and families throughout Palm Beach County.

Ike Powell III, Director

Palm Beach County Youth Services Department

Outreach and Community Programming Division



Letter from the Director

The Palm Beach County Youth Services Department is pleased to present this Community-Based Agencies Annual Report for FY2023-24. This report showcases the local youth- and family-serving non-profits and public entities that received funding from the Palm Beach County Board of County Commissioners to focus on the following priorities:

- Economic Access;
- Educational Supports;
- Ensuring Safety & Justice;
- Health & Wellness;
- Parenting & Role Models; and
- Social & Emotional Learning Supports.

The Community-Based Agencies (CBAs) featured in this report served more than 8,000 youth, adults, parents, mentors and organizations throughout Palm Beach County from October 1, 2023–September 30, 2024.

We extend great appreciation to our CBA partners for the frontline services the CBAs provide throughout Palm Beach County, directly providing education, supervision, activities and enrichment to youth, parents and caregivers, and program staff members who are serving youth, parents and caregivers. Together, we collaborate to help execute the Youth Services Department's mission of "Growing brighter futures by providing quality service, education, and access to resources and opportunities."

Thank you to the staff members of the Youth Services' Outreach and Community Programming Division and the Finance, Contracting and Administrative Services Division for all you do to support and collaborate with our CBAs toward the best outcomes for residents.

Thank you to the Board of County Commissioners and County Administration for investing in the youth and families of our communities and supporting the CBAs with more than \$5 million in funding of strategic action areas identified in the Youth Master Plan for Palm Beach County.

Elisa Cramer, Director
Palm Beach County Youth Services Department

Financial Summary

Agency Name	Program	Budget	Expenditure
Economic Access			
Florence Fuller Child Development Centers, Inc.	Teen Leadership Initiative	\$ 61,000.00	\$ 61,000.00
Pace Center for Girls, Inc.	Healthy Youth Transitions	\$ 110,000.00	\$ 80,682.92
Vita Nova, Inc.	Pathways to Employment	\$ 153,000.00	\$ 152,975.44
Subtotal		\$ 324,000.00	\$ 294,658.36
Educational Supports			
Digital Vibe, Inc.	Lifetime of Consequences	\$ 113,000.00	\$ 112,999.68
Girl Scouts of Southeast Florida, Inc.	Girl Scout Leadership Experience	\$ 112,000.00	\$ 111,995.00
Scholar Career Coaching, Inc.	Mentoring - College & Career Readiness	\$ 27,000.00	\$ 27,000.00
The Arc of Palm Beach County, Inc.	Stand Up & Youth Employment Programming	\$ 82,000.00	\$ 81,999.88
Subtotal		\$ 334,000.00	\$ 333,994.56
Ensuring Safety & Justice			
Aid to Victims of Domestic Abuse, Inc. (AVDA)	Commit to Change	\$ 200,000.00	\$ 200,000.00
Children of Inmates, Incorporated	Boyz to Men & Girlz to Women	\$ 74,508.00	\$ 71,705.08
Children's Case Management Organization (Families First of Palm Beach County)	Youth Empowered and Secure	\$ 129,000.00	\$ 128,999.87
Choice To Change, Inc.	Believe and Achieve	\$ 80,000.00	\$ 80,000.00
Communities in Schools of Palm Beach County Inc.	Charting For Success	\$ 70,000.00	\$ 70,000.00
Community Child Care Center of Delray Beach, Inc. (Achievement Centers for Children & Families)	MenTeens of the Future	\$ 112,000.00	\$ 111,999.43
Gulfstream Goodwill Industries, Inc.	Supervised Release	\$ 100,000.00	\$ 92,717.67
United Way of Palm Beach County, Inc.	Enhanced Mentoring Engagement (Level Up)	\$ 670,000.00	\$ 610,060.00
*City of Riviera Beach	Riviera Beach Youth Empowerment Center	\$ 180,000.00	\$ 167,661.77
*For the Children, Inc.	Lake Worth Youth Empowerment Center	\$ 185,000.00	\$ 184,999.84
*Student ACES, Inc.	Belle Glade Youth Empowerment Center	\$ 180,000.00	\$ 174,239.16
Subtotal		\$ 1,980,508.00	\$ 1,892,382.82

* Youth Empowerment Center (YEC)

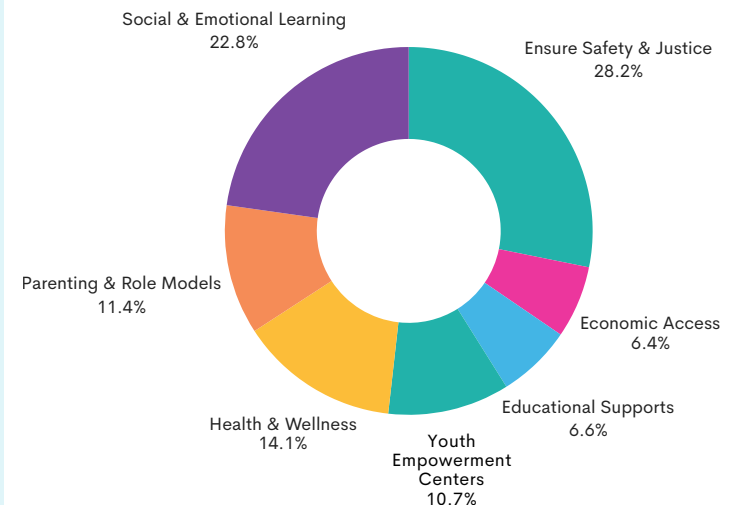
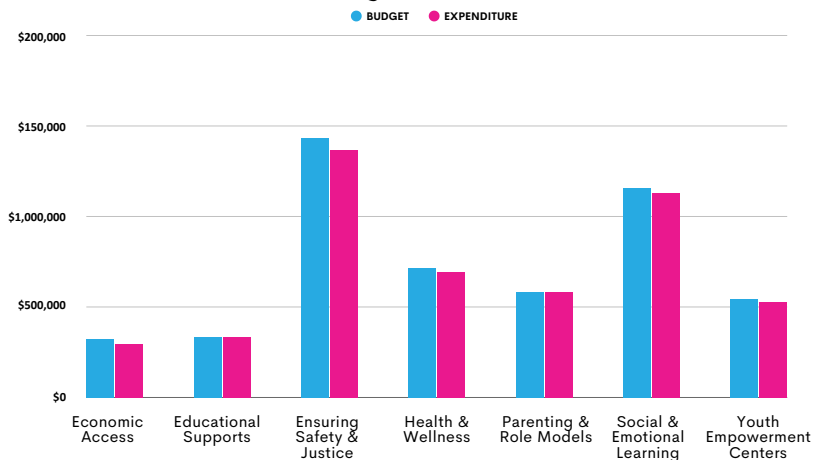
Financial Summary

Agency Name	Program	Budget	Expenditure
Health & Wellness Supports			
Center for Child Counseling, Inc.	Education and Prevention Services	\$ 200,000.00	\$ 199,999.01
Compass, Inc.	Mental Health Program	\$ 158,000.00	\$ 157,999.90
Connections Education Center of the Palm Beaches, Inc.	Connections Health and Wellness Program	\$ 120,000.00	\$ 119,999.90
For The Children, Inc.	Healthy Families Healthy Kids	\$ 140,000.00	\$ 140,000.00
Pace Center for Girls, Inc.	Family Strengthening	\$ 98,000.00	\$ 67,999.92
Subtotal		\$ 716,000.00	\$ 690,749.63
Parenting & Role Models			
Children of Inmates, Incorporated	Babies 'n Brains Parenting Supports	\$ 57,000.00	\$ 57,000.00
Exchange Club/Dick Webber Center for the Prevention of Child Abuse for the Gold Coast, Inc. (The Children's Healing Institute)	Parent Aide	\$ 75,000.00	\$ 75,000.00
Grandma's Place, Inc.	Parent Support Program	\$ 192,000.00	\$ 192,000.00
The Literacy Coalition of Palm Beach County, Inc.	Glades Family Education	\$ 52,000.00	\$ 51,999.98
The Children's Home Society of Florida	Visitation Center	\$ 130,000.00	\$ 130,000.00
The Children's Home Society of Florida	Adoption Assistance Program	\$ 75,000.00	\$ 74,999.94
Subtotal		\$ 581,000.00	\$ 580,999.92

Financial Summary

Agency Name	Program	Budget	Expenditure
Social & Emotional Learning Supports			
American Association of Caregiving Youth, Inc.	Caregiving Youth Project Expansion	\$ 75,000.00	\$ 75,000.00
Boys and Girls Clubs of Palm Beach County, Inc.	Building Youth Resilience	\$ 139,000.00	\$ 138,999.47
Community Child Care Center of Delray Beach, Inc. (Achievement Centers for Children & Families)	ACCF's Out-of-School Time Programs	\$ 140,000.00	\$ 139,999.99
City of Greenacres	Teen Out-of-School Time Programs	\$ 77,000.00	\$ 77,000.00
Compass, Inc.	Youth and Family Services	\$ 100,000.00	\$ 100,000.00
Florence Fuller Child Development Centers, Inc.	Strong Kids Today for a Better Tomorrow	\$ 94,000.00	\$ 93,914.81
Housing Partnership, Inc. (Community Partners of South Florida)	Mentoring at Lake Worth Middle & Pahokee Elementary	\$ 100,000.00	\$ 99,999.95
Milagro Foundation, Inc.	Touch B.A.S.E. (Behavioral and Social Emotional) Program	\$ 68,000.00	\$ 67,999.92
Prime Time Palm Beach County, Inc.	Middle/High School Out-of-School Programs	\$ 280,710.00	\$ 280,710.00
The Path to College Foundation, Inc.	Path to College Fellowship	\$ 26,000.00	\$ 25,999.80
The Urban League of Palm Beach County, Inc.	Project Ready NULITES	\$ 60,000.00	\$ 31,050.00
Subtotal		\$ 1,159,710.00	\$ 1,128,573.94
GRAND TOTAL		\$ 5,095,218.00	\$ 4,921,359.23

Budget Allocation





Economic Access

To mitigate the impact of poverty by increasing affordability of basic services and job training options



Outcomes

Agency	Youth became job ready through career training to include: interview skills, budgeting as evidenced by pre and post tests	Youth acquired contextual learning related to post-secondary education and/or trade school as evidenced by pre and post tests	Career and job coached youth gained self-confidence for career visioning and planning as evidenced by pre and post tests	Youth accessed service, training through direct transportation or a voucher system as evidenced by internal tracking records	Youth gained employability skills and were workforce ready as evidenced by pre and post tests	Youth met post-secondary academic standards as evidenced by Letter of Acceptance from colleges, universities, vocational-technical schools/programs	Youth gained employment as evidenced by job placements
Florence Fuller Child Development Centers <i>(The Promise Program: Teen Leadership Initiative)</i>	Target: 81% 100%	Target: 81% 100%	Target: 81% 100%	Target: 100% 100%	n/a	n/a	n/a
Pace Center for Girls <i>(Healthy Youth Transitions)</i>	Target: 80% 60%	n/a	Target: 80% 53%	n/a	Target: 80% 63%	n/a	Target: 72% 80%
Vita Nova <i>(Pathways to Employment)</i>	n/a	Target: 80% 100%	n/a	n/a	Target: 80% 100%	Target: 80% 100%	Target: 80% 100%



Key

- Met the outcome standard
- Above the outcome standard
- Below the outcome standard

Service Reach



Agency	Program	Projected # Served	Actual # Served
Florence Fuller Child Development Centers	The Promise Program: Teen Leadership Initiative	Youth 16	Youth 34
Pace Center for Girls	Healthy Youth Transitions	Youth 40	Youth 42
Vita Nova	Pathways to Employment	Youth 80	Youth 230



Spotlight



Vita Nova
Juneteenth event at the Spot



Pace Center for Girls
Attending the Believing in Girls Luncheon



Pace Center for Girls
Family Enrichment Night



Florence Fuller Child Development Centers
Teen leader working with afterschool children



Vita Nova
Hygiene drop-off at the Spot for pantry



Florence Fuller Child Development Centers
Teen leader went all out during positivity rock painting activity.





Educational Supports

To promote educational equity for all students from pre-K through post-secondary education



Outcomes

Agency	Youth attained college readiness as evidenced by pre- and post-assessments	Youth received coaching and achieved acceptance to post-secondary institutions as evidenced by letters of acceptance	Youth received extracurricular support, and advanced to the next grade level or achieved on-time graduation as evidenced by academic records	Youth achieved career readiness through experiential learning as evidenced by completion certificate or certification	Parents of special needs students obtained educational supports as evidenced by pre- and post-surveys
Scholar Career Coaching (Mentoring - College & Career Readiness)	Target: 80% 100%	Target: 80% 100%	n/a	Target: 80% 100%	n/a
The Arc of Palm Beach County (Stand Up & Youth Employment Programming)	Target: 80% 100%	n/a	Target: 80% 100%* *client number underserved	Target: 80% 100%* *client number underserved	Target: 80% 20%[^]

[^]Parents received the educational supports but did not complete the virtual post-survey.



Key

- Met the outcome standard
- Above the outcome standard
- Below the outcome standard

Outcomes

Agency	Youth attained college readiness as evidenced by pre- and post-assessments	Youth received extracurricular support, and advanced to the next grade level or achieved on-time graduation as evidenced by academic records	Youth achieved career readiness through experiential learning as evidenced by completion certificate or certification	Youth built resiliency to overcome obstacles while achieving educational goals as evidenced by resiliency assessment	Youth reduced school absences and behavior referrals through educational supports in supervised and structured learning environments after school and in out-of-school time as evidenced by school attendance and behavior records	Parents achieved proficiency in navigation of the school system and were more engaged in supporting their children's academic success as evidenced by pre- and post-assessments
Digital Vibez (Digital Expressions: Lifetime of Consequences)	n/a	Target: 80% 100%	Target: 80% 100%	Target: 80% 100%	Target: 80% 100%	n/a
Girl Scouts of Southeast Florida (Girl Scout Leadership Experience)	Target: 93% 97%	n/a	Target: 90% 100%	Target: 80% 80%	n/a	Target: 80% 97%



Key

- Met the outcome standard
- Above the outcome standard
- Below the outcome standard

Service Reach



Agency	Program	Projected # Served	Actual # Served
Digital Vibez	Digital Expressions: Lifetime of Consequences	Youth 96	Youth 156
Girl Scouts of Southeast Florida	Girl Scout Leadership Experience	Youth 600 Parents/ Caregivers 100	Youth 636 Parents/ Caregivers 119
Scholar Career Coaching	Mentoring - College & Career Readiness	Youth 60	Youth 62
The Arc of Palm Beach County	Stand Up & Youth Employment Programming	Youth 105 Parents/ Caregivers 20	Youth 96 Parents/ Caregivers 21



Spotlight



Girl Scouts of Southeast Florida
Girl Scouts learned about coral reef care and marine conservation



The Arc of Palm Beach County
Cooking class with SAIL's Ravish program



Digital Vibez
A Mentee from For the Children performing a PSA song



The Arc of Palm Beach County
SAIL prom



Scholar Career Coaching
2024 scholarship recipients



Girl Scouts of Southeast Florida
Girl Scouts learned about shark tagging and other marine careers through interactive experiences





Ensuring Safety & Justice

To support youth ages 13 – 18, who are involved in the justice and/or criminal justice systems (or at risk of becoming involved), by enhancing and expanding resources and activities to reduce and prevent criminal activities



Outcomes

Agency	Youth engaged in an impact project to improve community safety and/or community relationships over a period of at least six months to include planning, organizing, implementing and reflecting on project as evidenced by project plan and completed project	Youth increased engagement in youth leadership groups focused on promoting equity, inclusion, violence prevention, anti-bullying and social justice efforts as evidenced by attendance log	Youth built positive relationships with adults and each other and felt a sense of connectedness or belonging to their school and community as evidenced by pre- and post-assessments	Youth received trauma-informed assessment and ongoing intervention to address needs as evidenced by the assessment and service plan	Parents received education and interventions to increase positive family support and stable family home environment as evidenced by pre- and post-assessments	Youth demonstrated increased knowledge in gang prevention, academic success, peer pressure, anger management, and life skills as evidenced by pre- and post-assessments
Aid to Victims of Domestic Abuse <i>(Commit to Change: A Violence Prevention Initiative)</i>	Target: 77% 100%	Target: 80% 100%	Target: 80% 100%	n/a	n/a	n/a
Children of Inmates <i>(Boyz to Men/ Girlz to Women)</i>	n/a	n/a	Target: 80% 100%	Target: 100% 100%	Target: 80% 100%	n/a
Community Child Care Center of Delray Beach <i>(MenTeens of the Future)</i>	Target: 80% 87%	n/a	Target: 80% 100%	n/a	n/a	Target: 80% 100%



Key

- Met the outcome standard
- Above the outcome standard
- Below the outcome standard

Outcomes

Agency	Youth built positive relationships with adults and each other and felt a sense of connectedness or belonging to their school and community as evidenced by pre- and post-assessments	Youth received trauma-informed assessment and ongoing intervention to address needs as evidenced by the assessment and service plan	Parents received education and interventions to increase positive family support and stable family home environment as evidenced by pre- and post- assessments	Youth remained active in the program for a minimum of six months and did not reoffend during that time as evidenced by tracking log and juvenile justice documentation	Youth received ongoing academic support, including tutoring, goal-setting, post-secondary education preparation as evidenced by attainment of goals identified in service plan	Youth received comprehensive, multi-component intensive support and intervention aimed at reducing risk of juvenile justice involvement or recidivism as evidenced by service plan and tracking log
Children's Case Management Organization (Families First of Palm Beach County) (Y.E.S. - Youth: Empowered and Secure Program)	n/a	Target: 80% 95%* *client number underserved	Target: 80% 100%	n/a	n/a	Target: 80% 95%* *client number underserved
Choice to Change (Believe & Achieve Program)	Target: 80% 100%	n/a	Target: 80% 100%	Target: 80% 97%	n/a	n/a
Communities in Schools of Palm Beach County (Charting for Success Program)	Target: 80% 100%	Target: 100% 100%	n/a	n/a	Target: 90% 100%	n/a
Gulfstream Goodwill Industries (Supervised Release)	n/a	Target: 85% 84%* *client number underserved	Target: 80% 100%	n/a	n/a	Target: 85% 87%* *client number underserved



Key

- Met the outcome standard
- Above the outcome standard
- Below the outcome standard

Service Reach



Agency	Program	Projected # Served	Actual # Served
Aid to Victims of Domestic Abuse (AVDA)	Commit to Change: A Violence Prevention Initiative	Youth: 250	Youth 391
Children of Inmates	Boyz to Men/ Girlz to Women	Youth: 25 Parents/Caregivers: 25	Youth 73 Parents/Caregivers 42
Children's Case Management Organization (Families First of Palm Beach County)	Y.E.S. - Youth: Empowered and Secure Program	Youth: 45 Parents/Caregivers: 30	Youth 39 Parents/Caregivers 46
Choice to Change	Believe & Achieve Program	Youth: 30 Parents/Caregivers: 30	Youth 42 Parents/Caregivers 39
Communities in Schools of Palm Beach County	Charting for Success Program	Youth: 50	Youth 54
Community Child Care Center of Delray Beach (Achievement Centers for Children & Families)	MenTeens of the Future	Youth: 60	Youth 156
Gulfstream Goodwill Industries	Supervised Release	Youth: 75 Parents/Caregivers: 25	Youth 62 Parents/Caregivers 42



Outcomes



Agency	Parents, guardians, and mentors increased their knowledge of the juvenile justice and/or dependency system	Program staff working with youth increased their knowledge to improve the quality of programs and services provided	Youth and families were supported by completing the triage process including referred and directly connected to a contracted agency Mentor Center Hub for services	Mentoring Center Hub achieved at least five outcomes as stated in their logic model
United Way of Palm Beach County <i>(Enhanced Mentoring Engagement - Level Up)</i>	Target: 80% 100%	Target: 80% 100%	Target: 76% 100%* <i>*client number underserved</i>	Target: 100% 100%

Agency	Projected # Served	Actual # Served
United Way of Palm Beach County <i>(Enhanced Mentoring Engagement - Level Up)</i>	Youth: 225 Parents/Caregivers/Mentors: 180 Service Organization Staff: 80	Youth 171** Parents/Caregivers/Mentors 248 Service Organization Staff 171

**In FY2024, United Way transitioned to two new hubs, which resulted in lower youth numbers. The youth served met the outcome.



- Key**
- Met the outcome standard
 - Above the outcome standard
 - Below the outcome standard

Spotlight



Children of Inmates
Bonding visit at Sago Palm
Re-entry Center



Community Child Care Center of Delray Beach
(Achievement Centers for Children & Families)
Platinum Steppers getting ready for a show



Children of Inmates
Family bonding event at Astro
Skate



Communities in Schools
Coach Ricky with teen
participants



**Aid to Victims of Domestic
Abuse (AVDA)**
Committed Men VIP
completion certificate



Choice to Change
With pup at Justin Bartlett
Animal Center



Spotlight



Community Child Care Center of Delray Beach
(Achievement Centers for Children & Families)
Students after walking Edmund Pettis Bridge



Communities in Schools
Coach Ricky makes time to sit down to discuss
steps after graduation



United Way of Palm Beach County
Connect to Greatness at Boynton Beach holiday parade



United Way of Palm Beach County
Xcel mentor and mentee at School
District career fair



United Way of Palm Beach County
Graduation for Inner City Innovators'
mentees





Youth Empowerment Centers

Youth Empowerment Centers (YEC) provide activities and services to youth ages 11-19, including after-school educational and recreational programs/activities. The YEC focuses on empowering youth, nurturing health, fostering education, encouraging leadership, community involvement, and career opportunities.

Services:

- Homework assistance, tutoring, and Scholastic Aptitude Test (SAT) skill building
- Life skills, financial literacy, and leadership skills training
- Mentoring support
- College readiness and tours

Activities:

- Community service projects incorporating reflective learning
- Career exploration/readiness, employability skills training, summer internships, and job placement assistance
- Connectivity to resources
- Youth/teen advisory council meetings to recommend programs, activities, and policy for the YECs



City of Riviera Beach,
Riviera Beach YEC



Student ACEs,
Belle Glade YEC



For the Children,
Lake Worth YEC

Outcomes



Agency	Students demonstrated improvement in student academics	Participants advanced in grade level or attained high school graduation	Seniors attained post graduate achievement including college/ vocational enrollment, employment, industry certification, military enlistment	Participants became/ remained crime-free	Participants demonstrated an increase in employability skills	Participants completed summer internships
City of Riviera Beach (Riviera Beach YEC)	Target: 80% 100%	Target: 90% 100%	Target: 100% 97%	Target: 95% 100%	Target: 82% 100%	Target: 100% 100%
For the Children (Lake Worth YEC)	Target: 80% 100%	Target: 90% 100%	Target: 90% 100%	Target: 96% 100%	Target: 80% 100%	Target: 100% 100%
Student ACEs (Belle Glade YEC)	Target: 80% 100%	Target: 90% 100%	Target: 90% 100%	Target: 95% 100%	Target: 83% 100%	Target: 100% 100%



Key

- Met the outcome standard
- Above the outcome standard
- Below the outcome standard

Service Reach



Agency	Program	Projected # Served	Actual # Served
City of Riviera Beach	Riviera Beach YEC	Youth: 100 Interns: 17	Youth: 124 Interns: 17
For The Children	Lake Worth YEC	Youth: 90 Interns: 10	Youth: 90 Interns: 10
Student ACEs	Belle Glade YEC	Youth: 60 Interns: 6	Youth: 89 Interns: 6





Health & Wellness

To educate, inform, and ensure that everyone from birth to age 22 has access to comprehensive health care (medical, dental, and behavioral health), healthy food, physical activities, and educational resources that promote healthy choices for a lifetime



Outcomes

Agency	Youth increased their knowledge of stress reduction techniques as evidenced by pre- and post-assessments	Youth demonstrated improvement in self-acceptance, coping skills, and connectivity within the community, as evidenced by pre- and post-assessments	Parents showed increased knowledge of trauma and inclusivity and the impact of connectivity within the community, as evidenced by pre- and post-assessments	Youth demonstrated an increase in awareness and connection to positive behaviors, activities and life skills to reduce health risks as evidenced by pre- and post- assessments	Parents increased participation in healthy lifestyle activities with their families as evidenced by tracking log
Center for Child Counseling <i>(Education and Prevention Services)</i>	Target: 90% 100%	Target: 90% 100%	Target: 90% 100%	Target: 90% 100%	n/a
Compass <i>(Mental Health Program)</i>	Target: 80% 100%	Target: 80% 100%	n/a	n/a	n/a
For the Children <i>(Healthy Families Healthy Kids)</i>	Target: 75% 91%	n/a	n/a	Target: 75% 85%	Target: 70% 93%



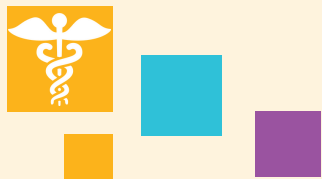
Key

- Met the outcome standard
- Above the outcome standard
- Below the outcome standard

Outcomes



Agency	Youth demonstrated improvement in self-acceptance, coping skills, and connectivity within the community, as evidenced by pre- and post-assessments	Parents showed increased knowledge of trauma and inclusivity and the impact of connectivity within the community, as evidenced by pre- and post-assessments	Youth demonstrated an increase in awareness and connection to positive behaviors, activities and life skills to reduce health risks as evidenced by pre- and post- assessments	Youth benefited physically by participating in structured indoor and outdoor exercise as evidenced by pre- and post-assessments	Parents increased participation in healthy lifestyle activities with their families as evidenced by tracking log
Connections Education Center of the Palm Beaches <i>(Connections: Health and Wellness Program)</i>	n/a	n/a	Target: 80% 100%	Target: 80% 100%	Target: 80% 100%
Pace Center for Girls <i>(Family Strengthening Program)</i>	Target: 80% 55% <i>*client number underserved</i>	Target: 80% 55% <i>*client number underserved</i>	Target: 80% 55% <i>*client number underserved</i>	n/a	n/a



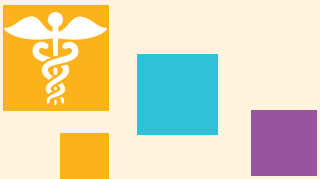
Key

- Met the outcome standard
- Above the outcome standard
- Below the outcome standard

Service Reach



Agency	Program	Projected # Served	Actual # Served
Center for Child Counseling	Education and Prevention Services	Youth: 250 Parents/Caregivers: 250	Youth: 589 Parents/Caregivers: 521
Compass	Mental Wellness Program	Youth: 100	Youth: 107
Connections Education Center of the Palm Beaches	Connection: Health and Wellness Program	Youth: 100 Parents/Caregivers: 20	Youth: 121 Parents/Caregivers: 105
For the Children	Healthy Families Healthy Kids	Youth: 60 Parents/Caregivers: 60	Youth: 60 Parents/Caregivers: 60
Pace Center for Girls	Family Strengthening Program	Youth: 30 Parents/Caregivers: 20	Youth: 22 Parents/Caregivers: 22



Spotlight



For the Children
Preparing a meal to share
with peers



Compass
Record art with families



Pace Center for Girls
Individual session at home



**Connections Education Center of the
Palm Beaches**
Learning how to kick feet independently
in the swimming pool



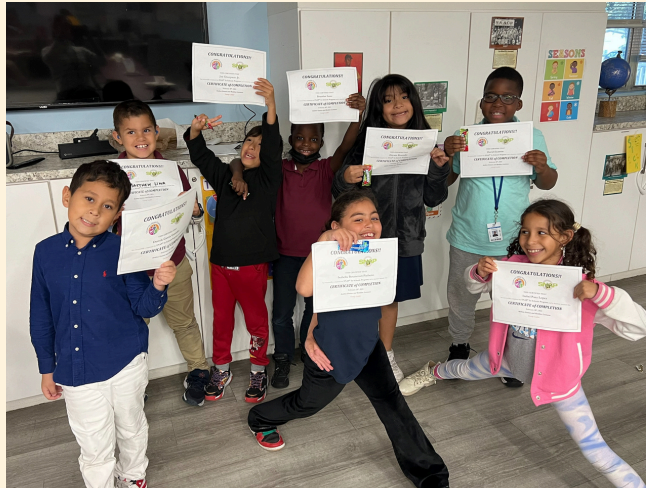
Center for Child Counseling
Brain Games at Boca West
High School



Spotlight



Connections Education Center of
the Palm Beaches
Measuring flour for pancakes



Center for Child Counseling
SNAP in Schools graduation



Connections Education Center of
the Palm Beaches
Culminating event day in fitness



For the Children
Lights On Afterschool event



Pace Center for Girls
Dress for Success





Parenting & Role Models

To provide parental engagement opportunities, and increase capacity of mentoring programs and outreach to parents through communication, natural support networks and mentors



Outcomes



Agency	Parents acquired coping skills and enhanced their ability to engage in positive relationships with their children as evidenced by pre- and post-assessments	Parents gained awareness of how to seek relevant community resources as evidenced by pre- and post-tests	Parents of children with disabilities had access to respite care as evidenced by placement records	Parents/caregivers/coaches increased their ability to initiate conversations with youth as evidenced by pre- and post-assessments
Exchange Club/ Dick Webber Center for the Prevention of Child Abuse of the Gold Coast (The Children's Healing Institute) <i>(Parent Aide)</i>	Target: 81% 86%	Target: 81% 83%	n/a	n/a
Grandma's Place <i>(Parent Support)</i>	Target: 95% 100%	Target: 95% 100%	Target: 94% 100%	n/a
The Palm Beach County Literacy Coalition <i>(Glades Family Education)</i>	n/a	Target: 75% 100%	n/a	Target: 75% 76%



Key

- Met the outcome standard
- Above the outcome standard
- Below the outcome standard

Outcomes



Agency	Parents gained knowledge of the impact of trauma on child development as evidenced by pre- and post-assessments	Incarcerated parents demonstrated increased attachment to their children as evidenced by bonding assessment tools	Children (birth to 5) increased developmental milestones as evidenced by Ages and Stages Questionnaire (ASQ)	Children (ages 6–11) of incarcerated parents demonstrated decreased anti-social behavior as evidenced by child anti-social behavioral tools
Children of Inmates (Babies 'N Brains Parenting Supports)	Target: 81% 100%	Target: 81% 100%	Target: 81% 100%	Target: 80% 74%* *client number underserved

Agency	Children served did not experience a recurrence of maltreatment during the reporting period	Finalized adoptions met or exceeded Department of Children and Families' projections	Children referred to the AGENCY with an identified placement will have proof that adoption consent packet was submitted for adoption attorney to pick-up within 120 days of Termination of Parent Rights
The Children's Home Society of Palm Beach County (Adoption Assistance Program)	Target: 95% 100%	Target: 100% 100%	Target: 100% 100%

Agency	Children were not abused or neglected during supervised visitation as evidenced by CHS incident reporting	Parents demonstrated improvement in their parenting capacity as evidenced by improvement in the Parental Stress Scale	Parents indicated positive responses to feeling respected, valued, supported and involved in their services as demonstrated by the CHS Client Satisfaction Surveys
The Children's Home Society of Palm Beach County (The Family Visitation Center)	Target: 100% 100%* *client number underserved	Target: 85% 35%* *client number underserved	Target: 91% 51%* *client number underserved



Key

- Met the outcome standard
- Above the outcome standard
- Below the outcome standard

Service Reach



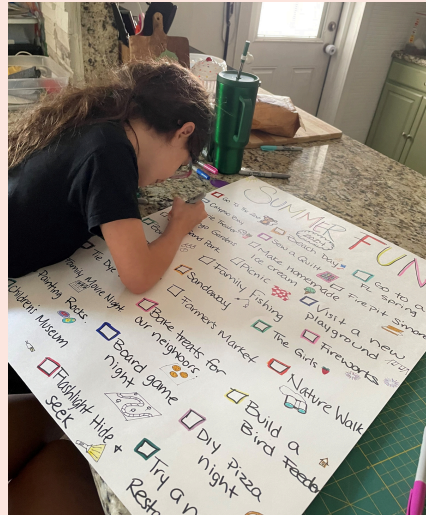
Agency	Program	Projected # Served	Actual # Served
Children of Inmates	Babies 'N Brains Parenting Supports	Youth: 54 Parents/Caregivers: 36	Youth: 101 Parents/Caregivers: 49
Exchange Club/Dick Webber Center for the Prevention of Child Abuse of the Gold Coast (The Children's Healing Institute)	Parent Aide	Parents/Caregivers: 42	Parents/Caregivers: 42
Grandma's Place	Parent Support	Parents/Caregivers: 40	Parents/Caregivers: 40
The Children's Home Society of Palm Beach County	Adoption Assistance Program	Youth: 118	Youth: 136
The Children's Home Society of Palm Beach County	The Family Visitation Center	Youth: 97 Parents/Caregivers: 65	Youth: 51 Parents/Caregivers: 57
The Palm Beach County Literacy Coalition	Glades Family Education	Parents/Caregivers: 75	Parents/Caregivers: 108



Spotlight



The Palm Beach County Literacy Coalition
Learning how to write my name



**Exchange Club/ Dick Webber
(The Children's Healing Institute)**
Creating a summer activity list



The Children's Home Society
National Adoption Day



Children of Inmates
Bonding visit with dad at Sago
Palm Re-entry Center



The Children's Home Society
Family Visitation Center clients
enjoying autumn



Grandma's Place
Sensory room fun





Social & Emotional Learning

To strengthen social and emotional skills such as self-control, persistence, leadership and social inclusion through training, coaching, collaboration and a designed curriculum that helps to ensure success in school and in life



Outcomes



Agency	Youth increased engagement in out-of-school time activities as evidenced by programmatic attendance records	Youth demonstrated improvement in connectivity within the community, self-concept, and decreased isolation as evidenced by pre-post survey	Parents demonstrated social and emotional skill building through at least three peer-support groups or educational sessions as evidenced by pre-post assessment	Providers demonstrated increased knowledge through training and professional learning opportunities to promote equitable practices as evidenced by pre-post assessment	Youth demonstrated growth in leadership, life skills and problem solving knowledge as evidenced by pre- and post-assessments
Boys and Girls Clubs of Palm Beach County <i>(Building Youth Resilience)</i>	Target: 80% 100%	n/a	Target: 72% 100%	n/a	Target: 80% 100%
Compass <i>(Youth and Family Services)</i>	n/a	Target: 80% 100%	Target: 80% 100%	Target: 80% 97%	n/a
Housing Partnership (Community Partners of South Florida) <i>(Mentoring at Lake Worth Middle)</i>	Target: 80% 100%	Target: 80% 100%	Target: 100% 100%	n/a	n/a
Housing Partnership (Community Partners of South Florida) <i>(Mentoring at Pahokee Elementary)</i>	Target: 80% 100%	Target: 80% 100%	Target: 100% 88%	n/a	n/a



Key

- Met the outcome standard
- Above the outcome standard
- Below the outcome standard

Outcomes

Agency	Youth increased engagement in out-of-school time activities as evidenced by programmatic attendance records	Youth were provided opportunities to get involved in their community and assume leadership roles as evidenced by service plan and tracking log	Youth increased feeling socially supported within their environment as evidenced by pre- and post-assessments	Youth benefited from positive social interactions as evidenced by tracking log	Parents demonstrated social and emotional skill building through at least three peer-support groups or educational sessions as evidenced by pre- and post- assessments	Youth were provided opportunities to get involved in their community and assume leadership roles as evidenced by service plan and tracking log
American Association of Caregiving Youth (Caregiving Youth Program)	Target: 90% 100%	n/a	Target: 90% 100%	n/a	n/a	n/a
City of Greenacres (Teen Out-of-School Time Program)	Target: 75% 100%	Target: 75% 100%	n/a	n/a	n/a	n/a
Community Child Care Center of Delray Beach (Achievement Center for Children and Families' Out-of-School Time Programs)	Target: 75% 100%* *client number underserved	n/a	Target: 75% 66%* *client number underserved	Target: 75% 100%* *client number underserved	Target: 76% 100%	n/a
The Path to College Foundation (Path to College Fellowship)	Target: 76% 100%	Target: 76% 100%	Target: 76% 100%	n/a	n/a	Target: 76% 100%



Key

- Met the outcome standard
- Above the outcome standard
- Below the outcome standard

Outcomes

Agency	Youth increased knowledge of healthy relationships and awareness of bullying, dating and domestic violence as evidenced by pre- and post-assessments	Youth demonstrated growth in leadership, life skills and problem solving knowledge as evidenced by pre- and post-assessments	Youth increased awareness of how identity is shaped by the media, peers, technology and the community by planning, organizing, implementing and reflecting on an impact project as evidenced by project plan and completed project	Youth increased engagement in out-of-school time activities as evidenced by programmatic attendance records	Parents demonstrated social and emotional skill building through at least three peer-support groups or educational sessions as evidenced by pre- and post- assessments	Youth received social skills assessment and ongoing intervention as evidenced by assessment and service plan
Florence Fuller Child Development Centers <i>(Strong Kids Today for a Better Tomorrow)</i>	n/a	n/a	Target: 80% 100%	n/a	Target: 76% 100%	Target: 80% 100%
Milagro Foundation <i>(Touch B.A.S.E. – Behavioral and Social Emotional – Program)</i>	Target: 90% 100%* *client number underserved	Target: 90% 100%* *client number underserved	Target: 100% 72%* *client number underserved	Target: 90% 100%* *client number underserved	n/a	n/a
The Urban League of Palm Beach County <i>(Project Ready NULITES)</i>	Target: 80% 100%**	Target: 80% 100%	n/a	Target: 80% 100%	n/a	n/a

**Despite serving a total of 93 youth across their program, only 56 worked towards this outcome, leaving the projected number of 60 underserved.

Key

- Met the outcome standard
- Above the outcome standard
- Below the outcome standard

Service Reach



Agency	Program	Projected # Served	Actual # Served
American Association of Caregiving Youth	Caregiving Youth Project	Youth: 225	Youth: 687
Boys and Girls Clubs of Palm Beach County	Building Youth Resilience	Youth: 120 Parents/Caregivers: 32	Youth: 148 Parents/Caregivers: 43
City of Greenacres	Teen Out-of-School Time Program	Youth: 40	Youth: 56
Community Child Care Center of Delray Beach (Achievement Centers for Children and Families)	Achievement Centers for Children and Families' Out-of-School Time Program	Youth: 500 Parents: 25	Youth: 470 Parents/Caregivers: 47
Compass	Youth and Family Services	Youth: 83 Parents/Caregivers: 40 Providers: 330	Youth: 90 Parents/Caregivers: 40 Providers: 332
Florence Fuller Child Development Centers (Fuller Center)	Strong Kids Today for a Better Tomorrow	Youth: 200 Parents/Caregivers: 50	Youth: 252 Parents/Caregivers: 76
Housing Partnership (Community Partners of South Florida)	Mentoring at Lake Worth Middle & Pahokee Elementary	Youth: 50 Parents/Caregivers: 50	Youth: 64 Parents/Caregivers: 58
Milagro Foundation	Touch B.A.S.E. - Behavioral and Social Emotional Program	Youth: 40	Youth: 39
The Path to College Foundation	Path to College Fellowship	Youth: 45	Youth: 106
The Urban League of Palm Beach County	Project Ready NULITES	Youth: 60	Youth: 93



Outcomes



Agency	Programs participating in the Quality Improvement System (QIS) will achieve satisfactory program quality. Programs served will attain an average score of 3.0 or above (on a scale of 1 to 5).	Practitioners served will report a positive impact of services and supports provided by Prime Time (defined as an average QIS-wide rating of 8 or higher on a scale of 1 to 10)	Youth will develop positive behaviors and skills as measured by a valid, reliable, and standardized rating tool. Average results across all middle-school programs will indicate an increase in overall youth score and/or an increase in at least one subscale over the course of the school year.	Youth will be cognitively, behaviorally and socially/emotionally engaged in sessions with the Expanded Learning Opportunity (ELO) providers. Across all middle school-serving ELOs, adult practitioners' ratings of overall youth engagement will average at least 7 out of 10.
Prime Time Palm Beach County <i>(Middle/High School Out-of-School Programs)</i>	Target: 3.0 3.71	Target: 80% 91%	Target: Increase from baseline 3.48 out of 5 (an increase of 0.12 from baseline)	Target: 70% 95%

Agency	Projected # Served	Actual # Served
Prime Time Palm Beach County <i>(Middle/High School Out-of-School Programs)</i>	Youth Experiences 550	Youth Experiences 3,466



Key

- Met the outcome standard
- Above the outcome standard
- Below the outcome standard

Spotlight



City of Greenacres
Outrun Hunger 5K



**American Association of
Caregiving Youth**
Students at Camp Treasure



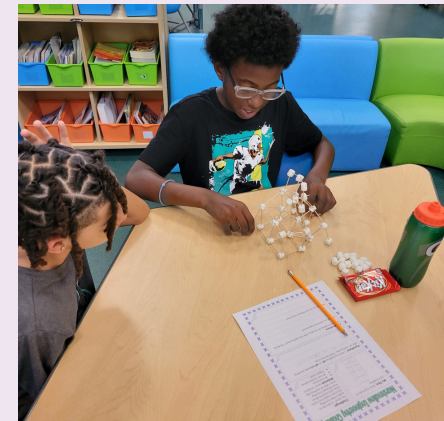
Milagro Center
Students getting ready for school



**Boys and Girls Clubs of Palm
Beach County**
Rebound and Recovery workbook
discussion with SEL Coordinator



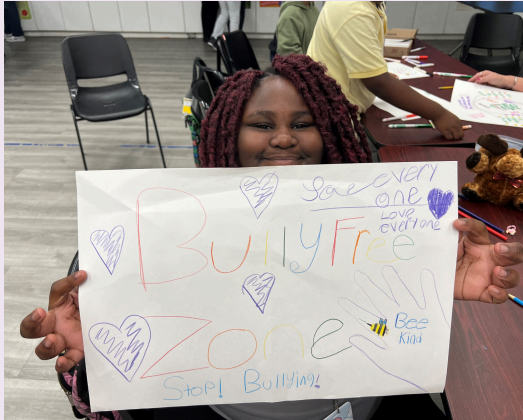
**Florence Fuller Child
Development Centers**
Literacy group reading time



**Community Child Care Center of
Delray Beach (Achievement
Centers for Children & Families)**
STEM marshmallow engineering



Spotlight



Florence Fuller Child Development Centers
Anti-bullying activity



Compass
Lavender graduation



Path to College
College tour at the University of Florida



Housing Partnerships
Family participating in mentor/mentee clean-up at Lake Worth Beach



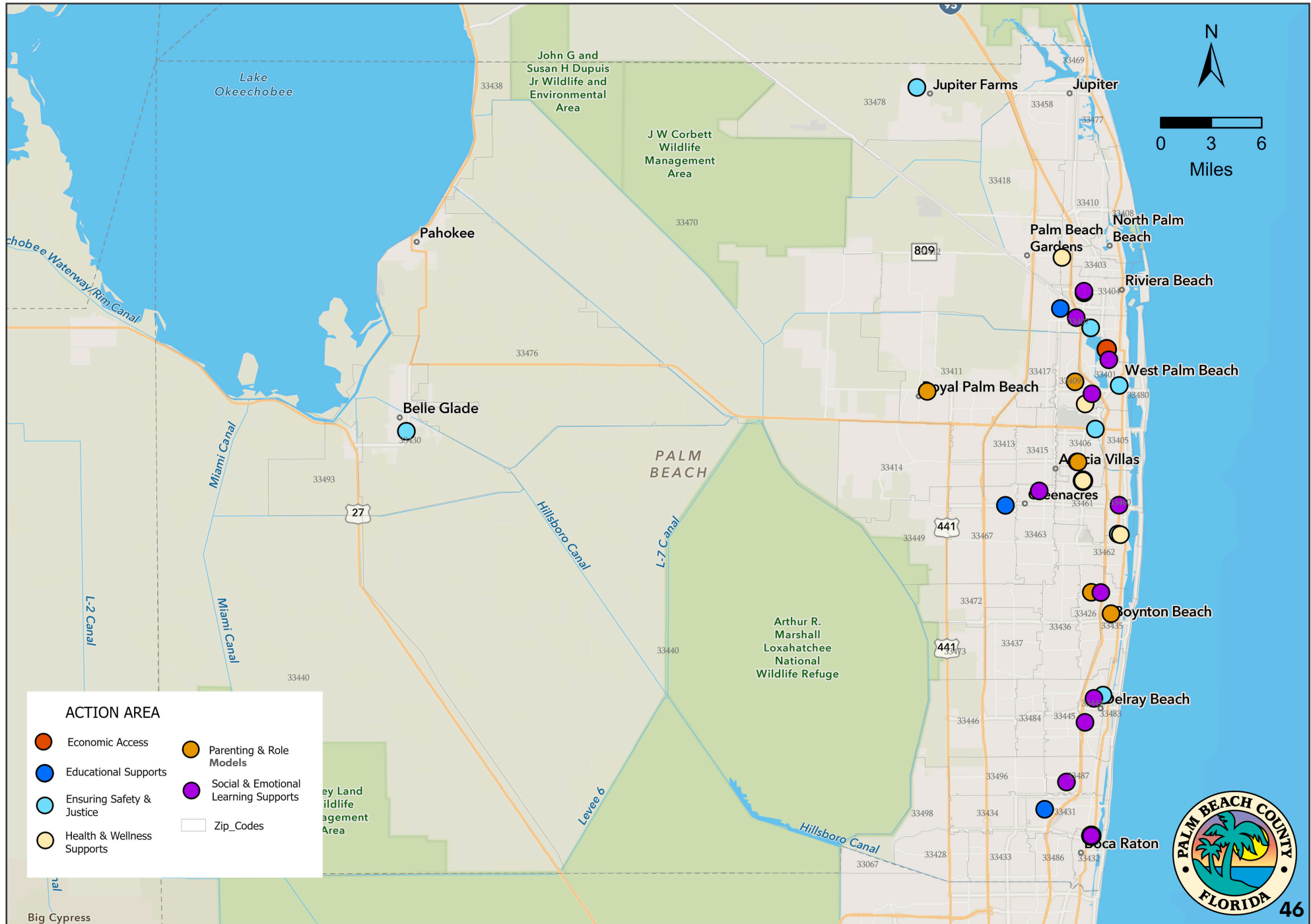
Urban League of Palm Beach County
Goal setting skyscraper



Prime Time Palm Beach County
Virtual reality with Green Mouse Academy



FY24 Community-Based Agencies (CBAs)





Community-Based Agencies Annual Report FY2024



pbcyouthservices



PBCYSD



50 S Military Trail Ste 203
West Palm Beach, FL 33415
561-242-5700
www.pbcgov.com/youthservices



Palm Beach County
Board of County Commissioners